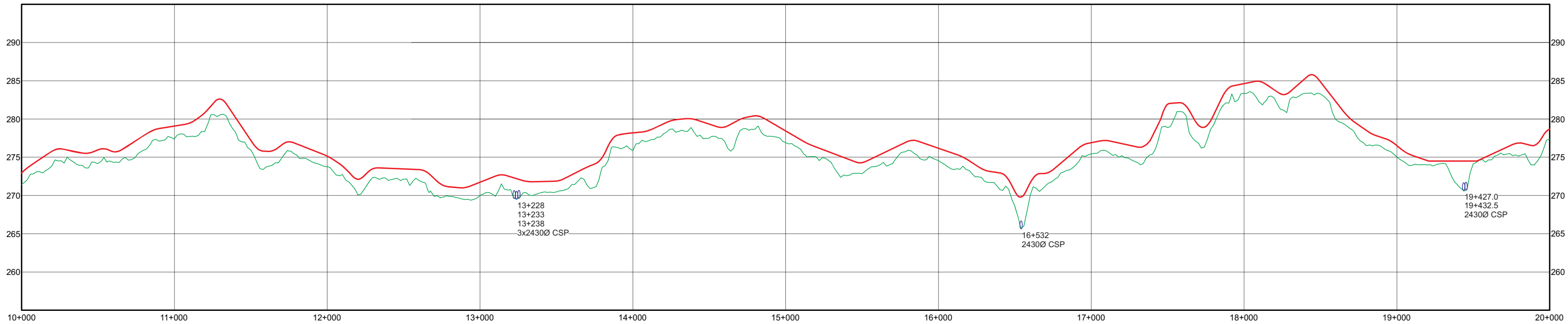
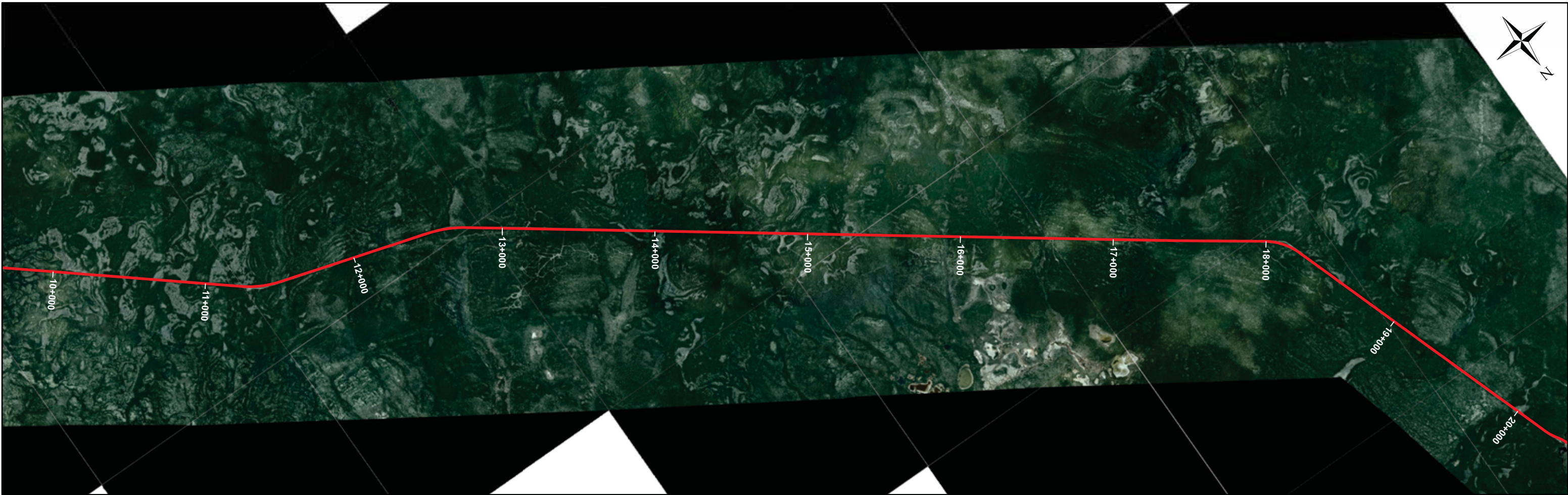



Legend

- Tlicho All Season Road Design
- Original Ground
- Bridge Location
- Major Culvert Location

Surveyed by: Sub-Arctic Survey Ltd.	July/August 2015
Designed by: DOT Design & Construct	February 2016
Approved By: DOT Technical Service	February 2016
Scale: H. 1:2,500 V. 1:500	
Page: 1 of 10	

TLICHO ALL SEASON ROAD
PLAN and PROFILE 0+000 TO 10+000



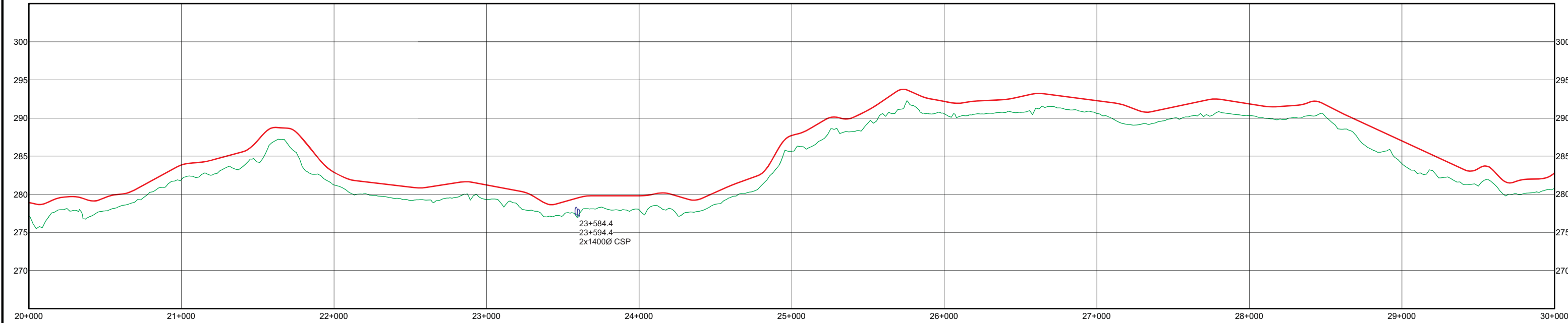
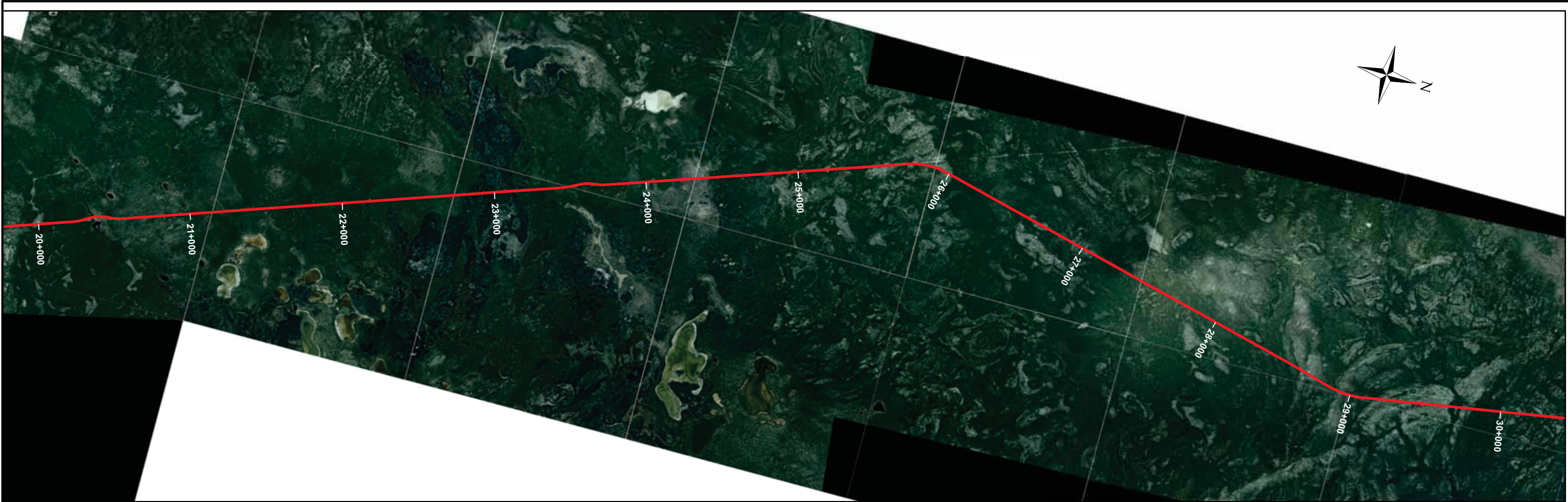


Legend

- Tlicho All Season Road Design
- Original Ground
- Bridge Location
- Major Culvert Location

Surveyed by: Sub-Arctic Survey Ltd.	July/August 2015
Designed by: DOT Design & Construct	February 2016
Approved By: DOT Technical Service	February 2016
Scale: H. 1:2,500 V. 1:500	
Page: 2 of 10	

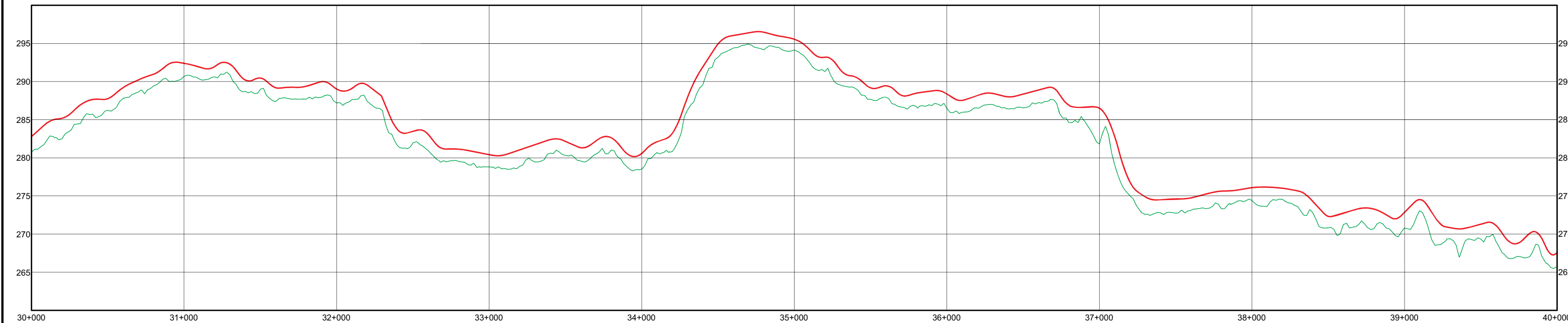
TLICHO ALL SEASON ROAD
PLAN and PROFILE 10+000 TO 20+000



- Legend
- Tlicho All Season Road Design
 - Original Ground
 - Bridge Location
 - Major Culvert Location

Surveyed by: Sub-Arctic Survey Ltd.	July/August 2015
Designed by: DOT Design & Construct	February 2016
Approved By: DOT Technical Service	February 2016
Scale: H. 1:2,500 V. 1:500	
Page: 3 of 10	

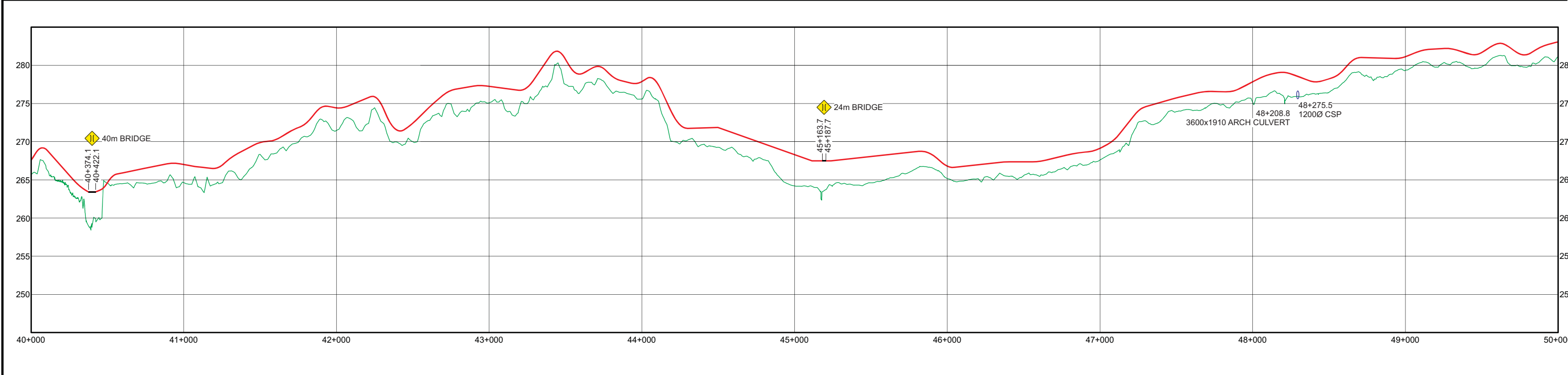
TLICHO ALL SEASON ROAD
PLAN and PROFILE 20+000 TO 30+000




- Legend**
- Tlicho All Season Road Design
 - Original Ground
 - Bridge Location
 - Major Culvert Location

Surveyed by: Sub-Arctic Survey Ltd.	July/August 2015
Designed by: DOT Design & Construct	February 2016
Approved By: DOT Technical Service	February 2016
Scale: H. 1:2,500 V. 1:500	
Page: 4 of 10	

TLICHO ALL SEASON ROAD
PLAN and PROFILE 30+000 TO 40+000





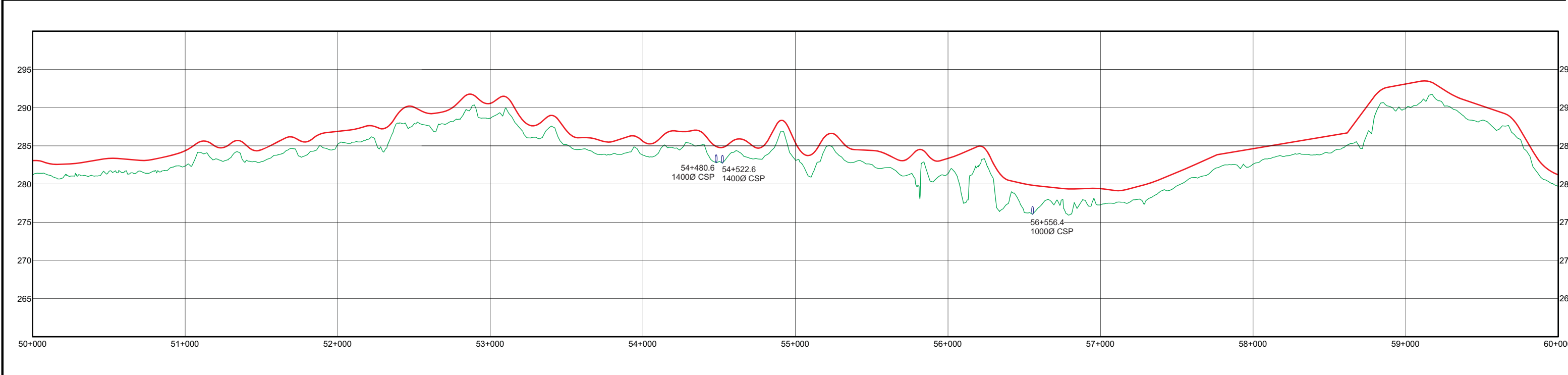
Legend


- Tliche All Season Road Design
- Original Ground
- Bridge Location
- Major Culvert Location

Surveyed by: Sub-Arctic Survey Ltd.	July/August 2015
Designed by: DOT Design & Construct	February 2016
Approved By: DOT Technical Service	February 2016
Scale: H. 1:2,500 V. 1:500	
Page: 5 of 10	

TLICHO ALL SEASON ROAD

PLAN and PROFILE 40+000 TO 50+000





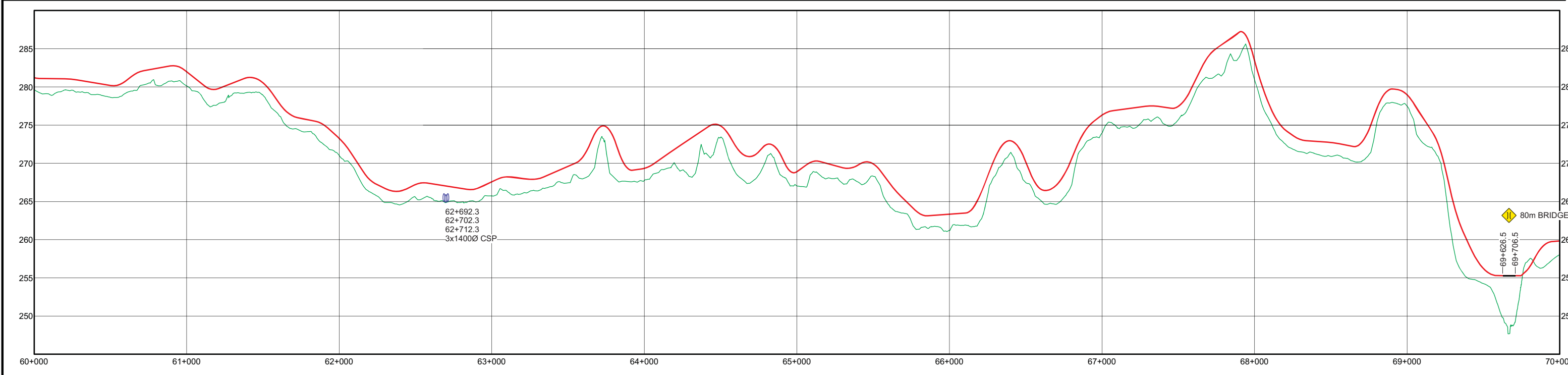
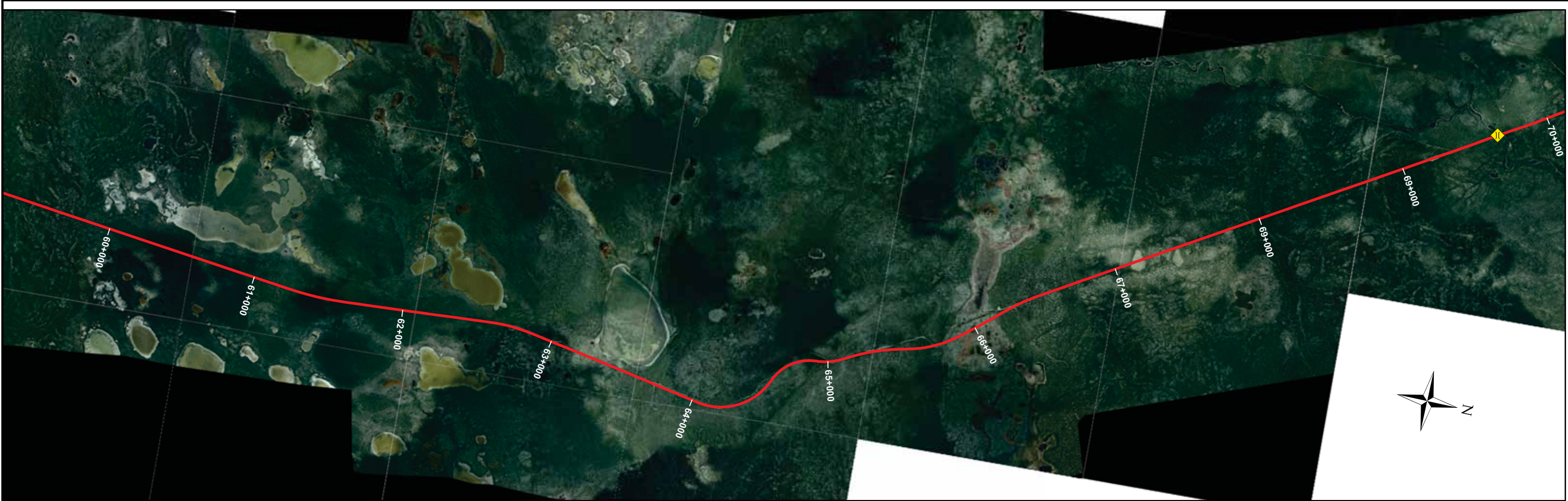
Legend


- Tlicho All Season Road Design
- Original Ground
- Bridge Location
- Major Culvert Location

Surveyed by: Sub-Arctic Survey Ltd.	July/August 2015
Designed by: DOT Design & Construct	February 2016
Approved By: DOT Technical Service	February 2016
Scale: H. 1:2,500 V. 1:500	
Page: 6 of 10	

TLICHO ALL SEASON ROAD

PLAN and PROFILE 50+000 TO 60+000





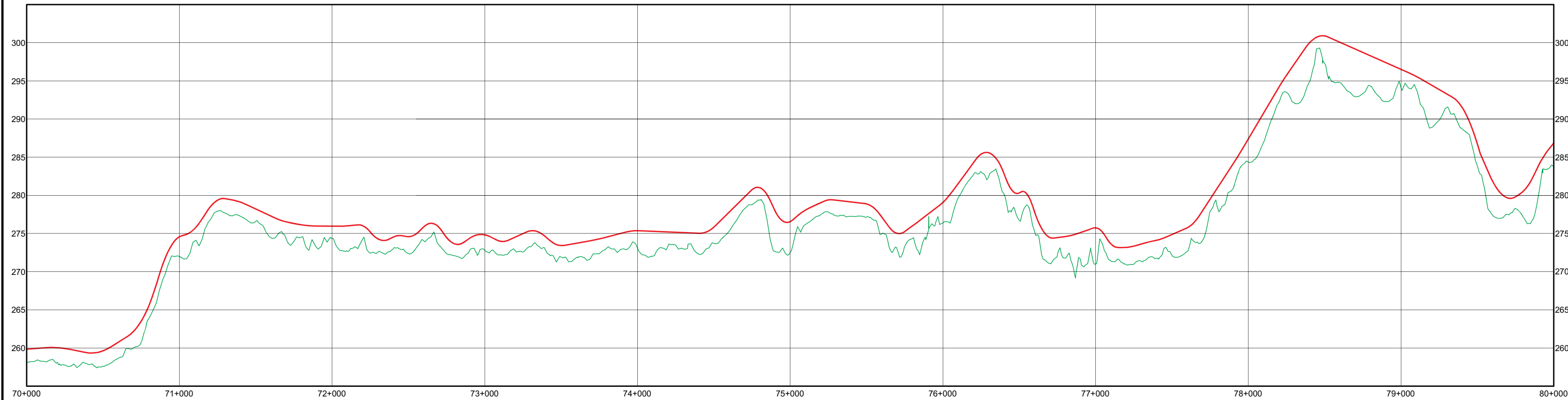
Legend

- Tliche All Season Road Design
- Original Ground
- Bridge Location
- Major Culvert Location

Surveyed by: Sub-Arctic Survey Ltd.	July/August 2015
Designed by: DOT Design & Construct	February 2016
Approved By: DOT Technical Service	February 2016
Scale: H. 1:2,500 V. 1:500	
Page: 7 of 10	

TLICHO ALL SEASON ROAD

PLAN and PROFILE 60+000 TO 70+000



Legend

- Tlicho All Season Road Design
- Original Ground
- Bridge Location
- Major Culvert Location

Surveyed by: Sub-Arctic Survey Ltd.

July/August 2015

Designed by: DOT Design & Construct

February 2016

Approved By: DOT Technical Service

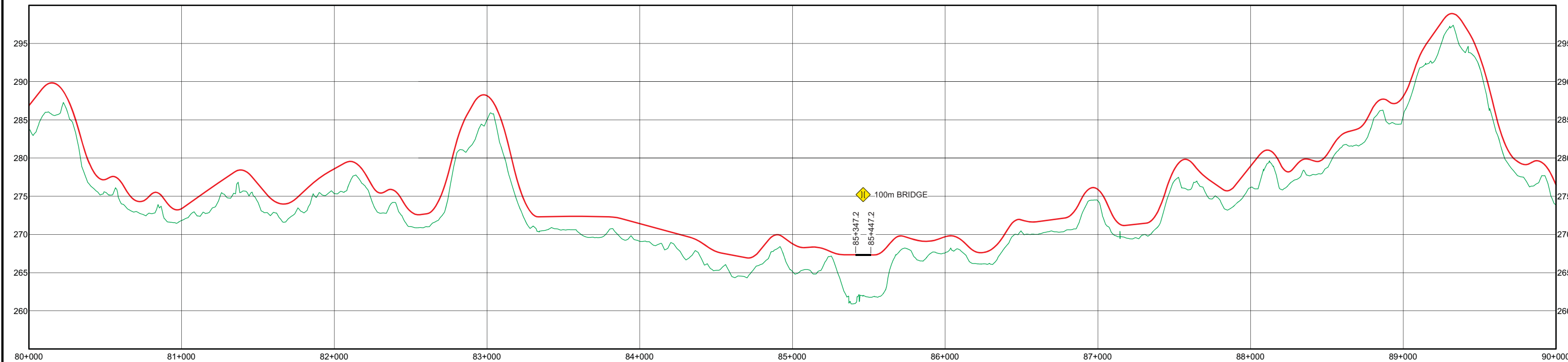
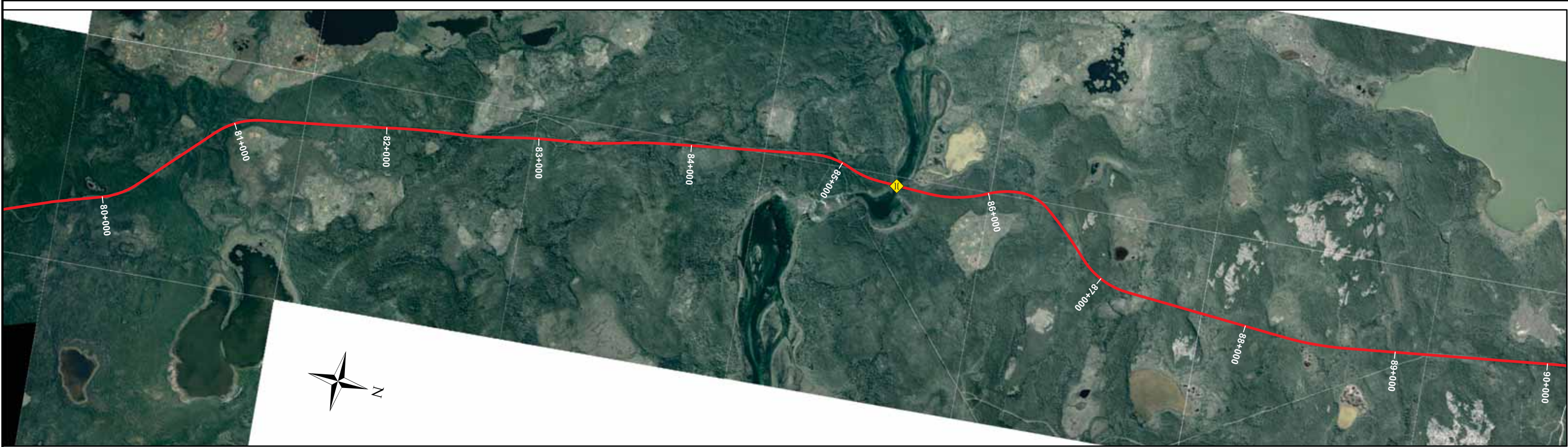
February 2016

Scale: H. 1:2,500 V. 1:500

Page: 8 of 10

TLICHO ALL SEASON ROAD
PLAN and PROFILE 70+000 TO 80+000





Legend

- Tliche All Season Road Design
- Original Ground
- Bridge Location
- Major Culvert Location

Surveyed by: Sub-Arctic Survey Ltd.

July/August 2015

Designed by: DOT Design & Construct

February 2016

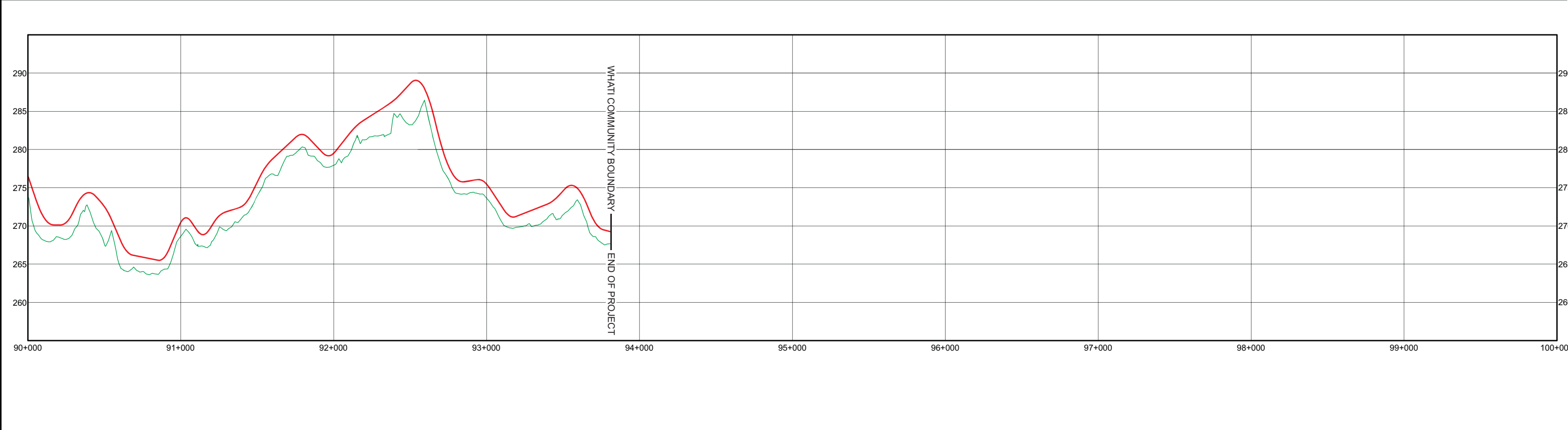
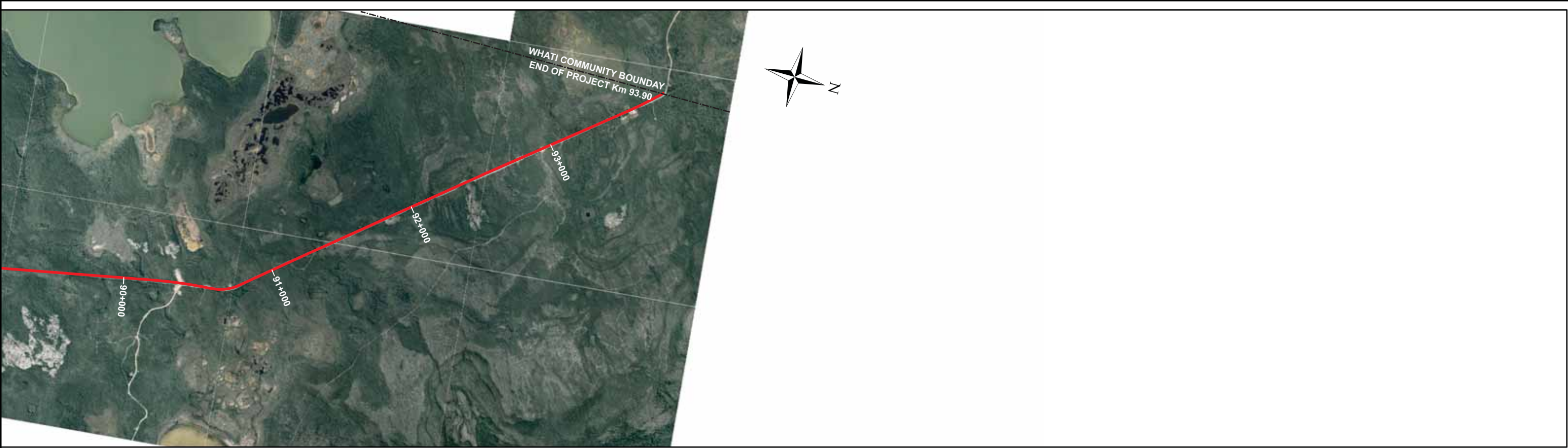
Approved By: DOT Technical Service


February 2016

Scale: H. 1:2,500 V. 1:500

Page: 9 of 10

TLICHO ALL SEASON ROAD
PLAN and PROFILE 80+000 TO 90+000



	Legend — Tliche All Season Road Design — Original Ground — Bridge Location — Major Culvert Location	Surveyed by: Sub-Arctic Survey Ltd.	July/August 2015	TLICHO ALL SEASON ROAD PLAN and PROFILE 90+000 TO +93+900
		Designed by: DOT Design & Construct	February 2016	
		Approved By: DOT Technical Service	February 2016	
		Scale: H. 1:2,500 V. 1:500		
		Page: 10 of 10		