



# Tłıchǫ All-Season Road Project: Conditions along route in June 2014



First 5 km

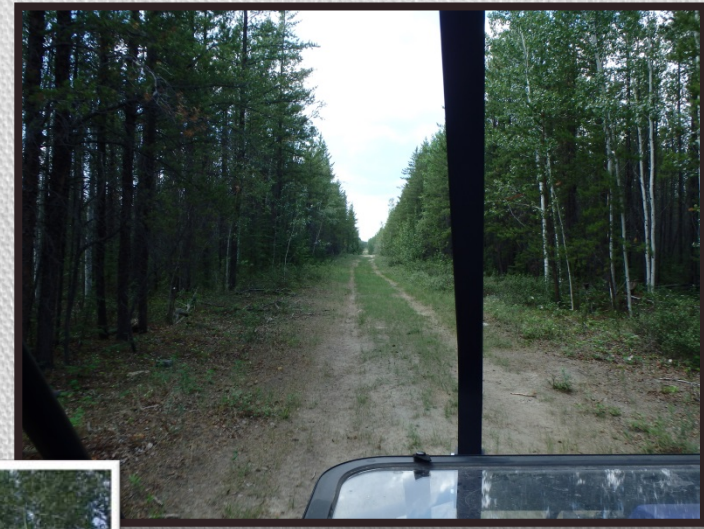






Near KM 11.5

**Sandy**



Near KM 12.5

**Well-  
established  
Trail**



Water  
Crossing 6



Near KM 20







Near KM 23



Near KM 23 – Burn Area Behind



Near KM 26

# 2014 Forest Fire Season Impacted First 38 km of Road

## Fire passed through this area after June 2014 field trip



Near KM 27.5



Near KM 33



Near KM 34





Near KM 36 – Willow/Birch Overgrowth occurs in small areas along route



Near KM 37 – 1994 Burn



Near KM 39



Near KM 40







1



2



3



To Whati

3 2  
4 1  
5

# Duport River



5

Crossing 8  
KM 41.5



4







Near KM 43.5

# Crossing 9 KM 46

Near KM 44



To Whati







Near KM 47.5

**Grassy**

Near KM 52



Near KM 54



Crossing 10 looking north

**Boggy  
Sections**

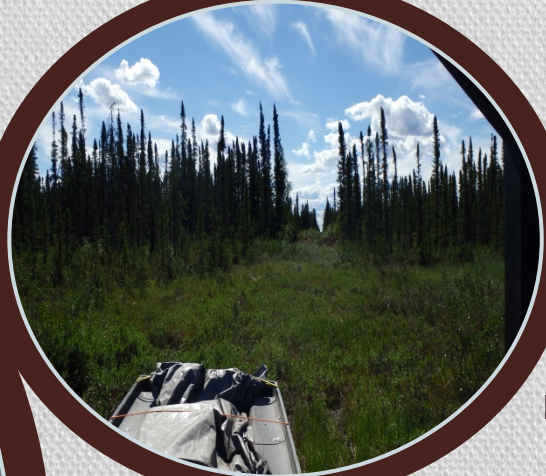
Near KM 52





## Crossing 11 – KM 56

To Whati  
←



KM 56



Near KM 57





Helicopter in front of route



Looking east



Wide floodplain

## Water Crossing 12 – KM 58



Erosion on Hill



Looking west

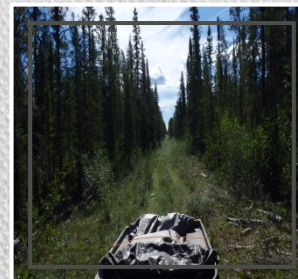


Looking back

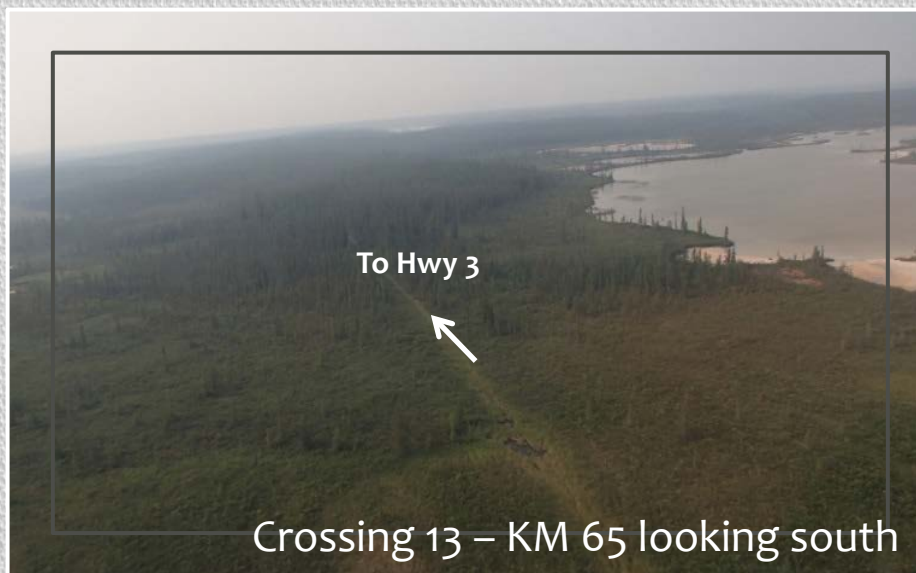




Near KM 61.5



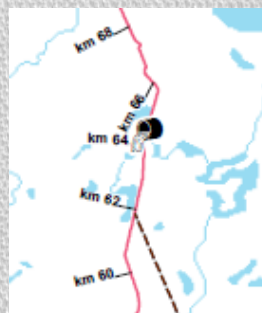
Near KM 63.5



KM 65



Near KM 67



Near KM 66

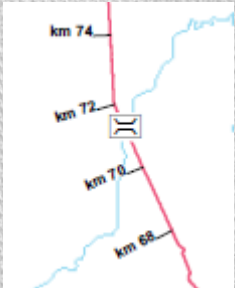




Near KM 67.5



Near KM 68



Near KM 70

Near KM 70 - downhill





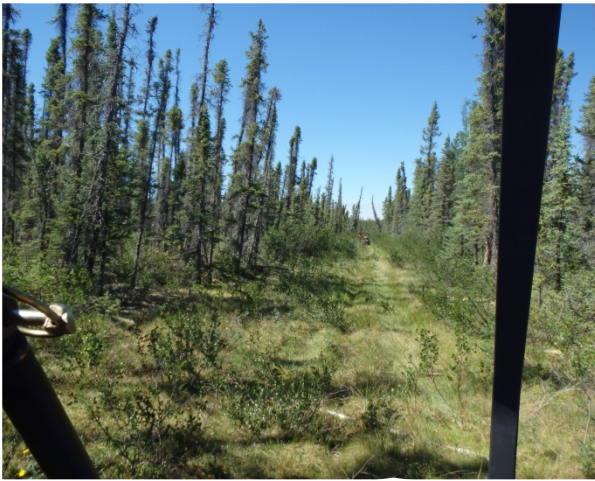
# James River



Crossing 14 – KM 71



# WET!



Near KM 71.5



Near KM 72



Near KM 72

Rocky  
along  
cleared  
route  
starting  
here →



Near KM 72.5



Near KM 78



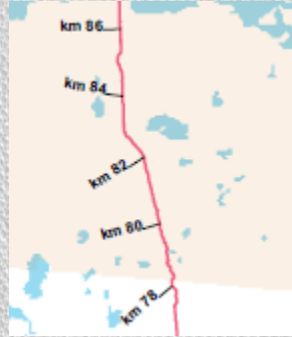




Near KM 78.5

**Entering:**

Near KM 85.5



Frank's Camp  
Near KM 78



Near KM 81.5

**Tłıchǫ  
Lands**

Near KM 85.5





Looking downstream



Argos crossing river!



Tłıchǫ portage  
campsite



# La Martre River

Possible  
bridge  
location



Possible  
bridge  
location



Looking  
upstream



Crossing 15  
KM 87

Old tree harvest line  
(continues to Whati)







Tree harvesting corridor



Near KM 92

# Road to Whatì



Near KM 93

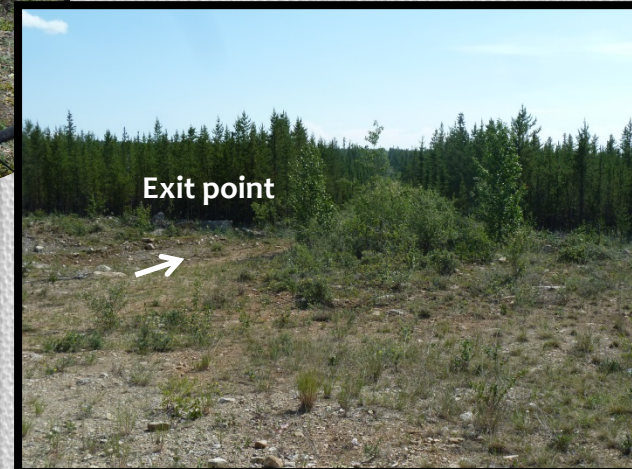


To La Martre  
Falls

Near KM 93.5



To Whatì

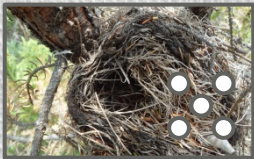
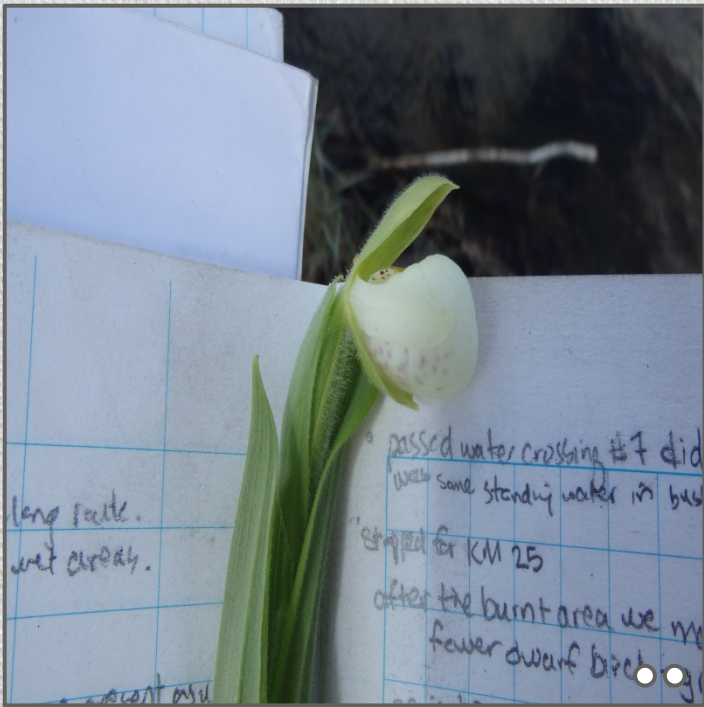


Exit point





○ Damselflies ○○ Field notes – Lady’s slipper ○○ Karst feature?



○○ Bear and wolf tracks ○○○ Old nest

# Interesting Sightings

# Along Route



