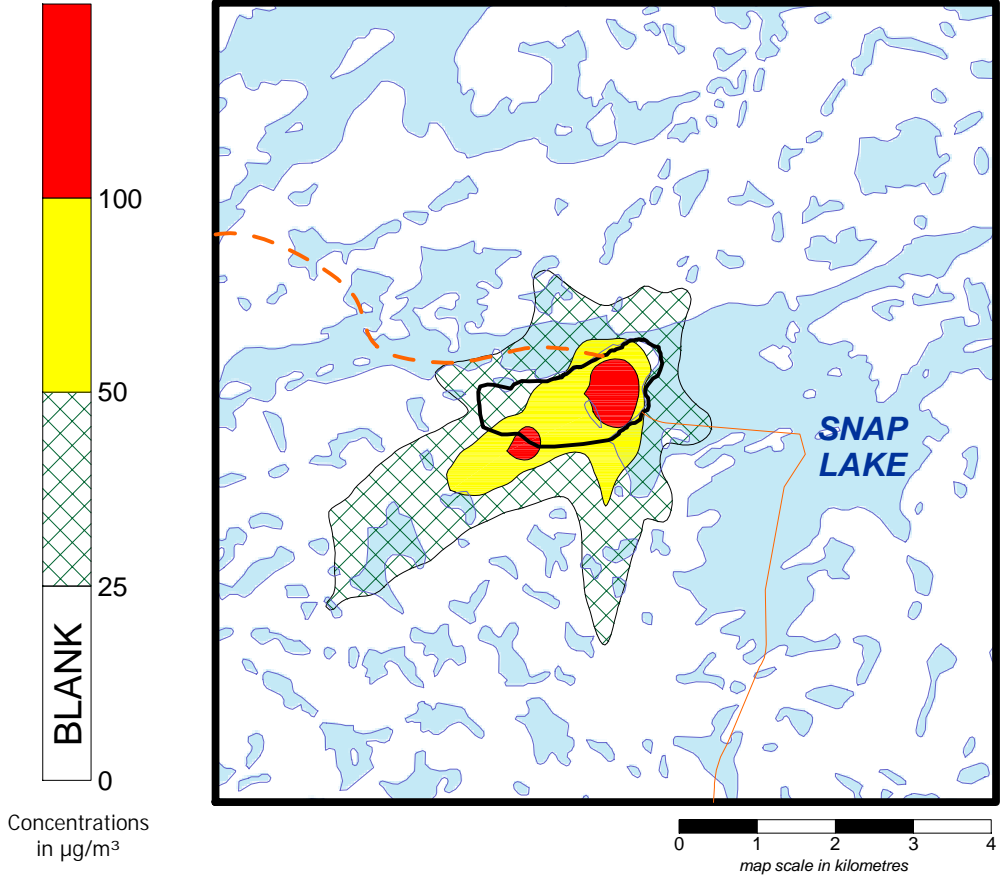


- Indicates the limits of the air quality regional study area.
- Indicates the active mine area at the Snap Lake Diamond Project.
- Indicates the limits of the detailed view, shown in the upper right of the page.
- Tibbitt-Contwoyto Winter Road
- - - Winter Access Road
- Esker Access Road

0 10 20 30 40
map scale in kilometres



Detailed View of the Snap Lake Diamond Mine Site



Concentrations
in $\mu\text{g}/\text{m}^3$

Parameter	Value	
Assessment Case	Application	
Model	CALPUFF 2-D Mode	
Meteorology	2 Years of On-site Meteorology	
TSP Emissions [t/d]	0.555	
24-Hour NWT TSP Standard [$\mu\text{g}/\text{m}^3$]	100	
	<i>RSA including the active mine area</i>	<i>RSA excluding the active mine area</i>
Maximum 24-Hour TSP Concentration [$\mu\text{g}/\text{m}^3$]	270.5	116.5
Area Greater than Standard [ha]	56	1

Figure 7.3-1
Maximum 24-Hour Application TSP Predictions

DE BEERS

