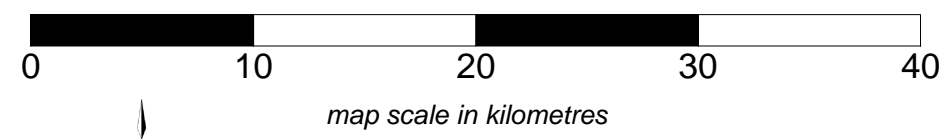
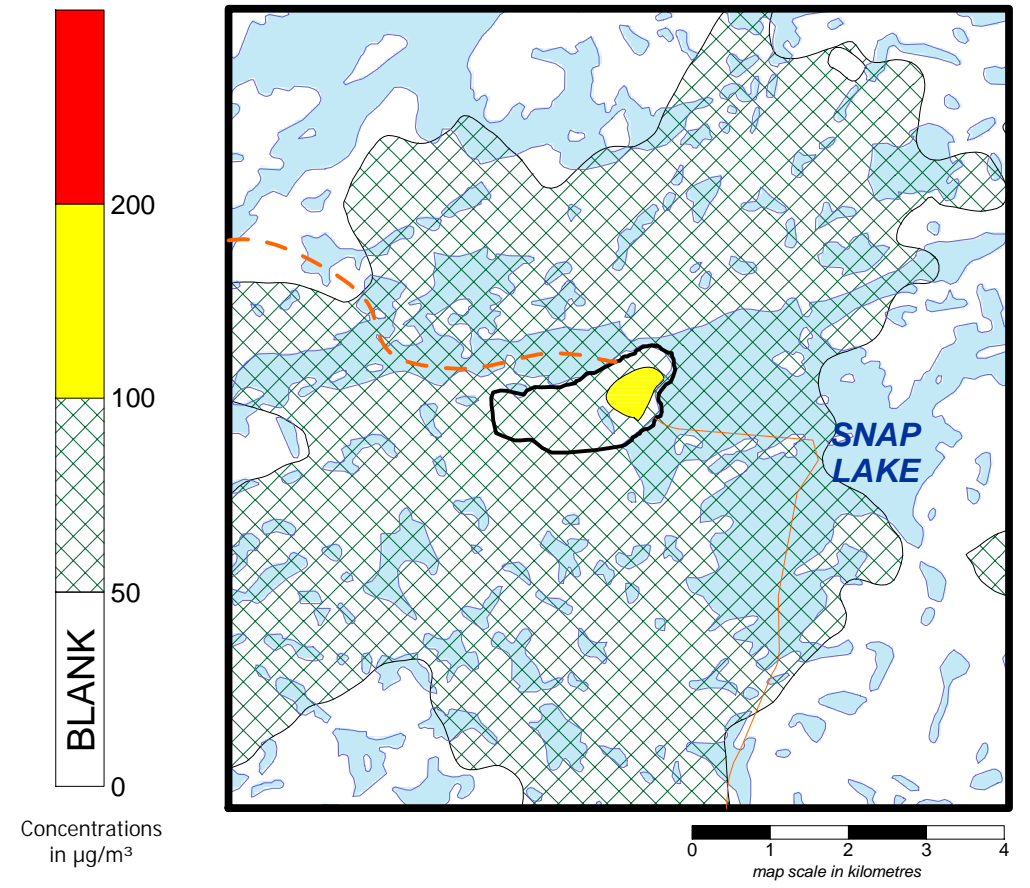


- Indicates the limits of the air quality regional study area.
- Indicates the active mine area at the Snap Lake Diamond Project.
- Indicates the limits of the detailed view, shown in the upper right of the page.
- Tibbitt-Contwoyto Winter Road
- Winter Access Road
- Esker Access Road



Detailed View of the Snap Lake Diamond Project



Parameter	Value	
Assessment Case	CEA	
Model	CALPUFF 2-D Mode	
Meteorology	2 Years of On-site Meteorology	
NO <sub>x</sub> Emissions [t/d]	37.214	
24-Hour NO <sub>2</sub> Criteria [µg/m <sup>3</sup> ]	200	
<i>Prediction</i>	<i>RSA including the active mine area</i>	<i>RSA excluding the active mine area</i>
Maximum 24-Hour NO <sub>x</sub> Concentration [µg/m <sup>3</sup> ]	633.1	216.0
Maximum 24-Hour NO <sub>2</sub> Concentration [µg/m <sup>3</sup> ]	139.8	98.1
Area Greater than Criteria [ha]	0	0

Figure 12.4-12  
Maximum 24-Hour CEA Case NO<sub>2</sub> Predictions

