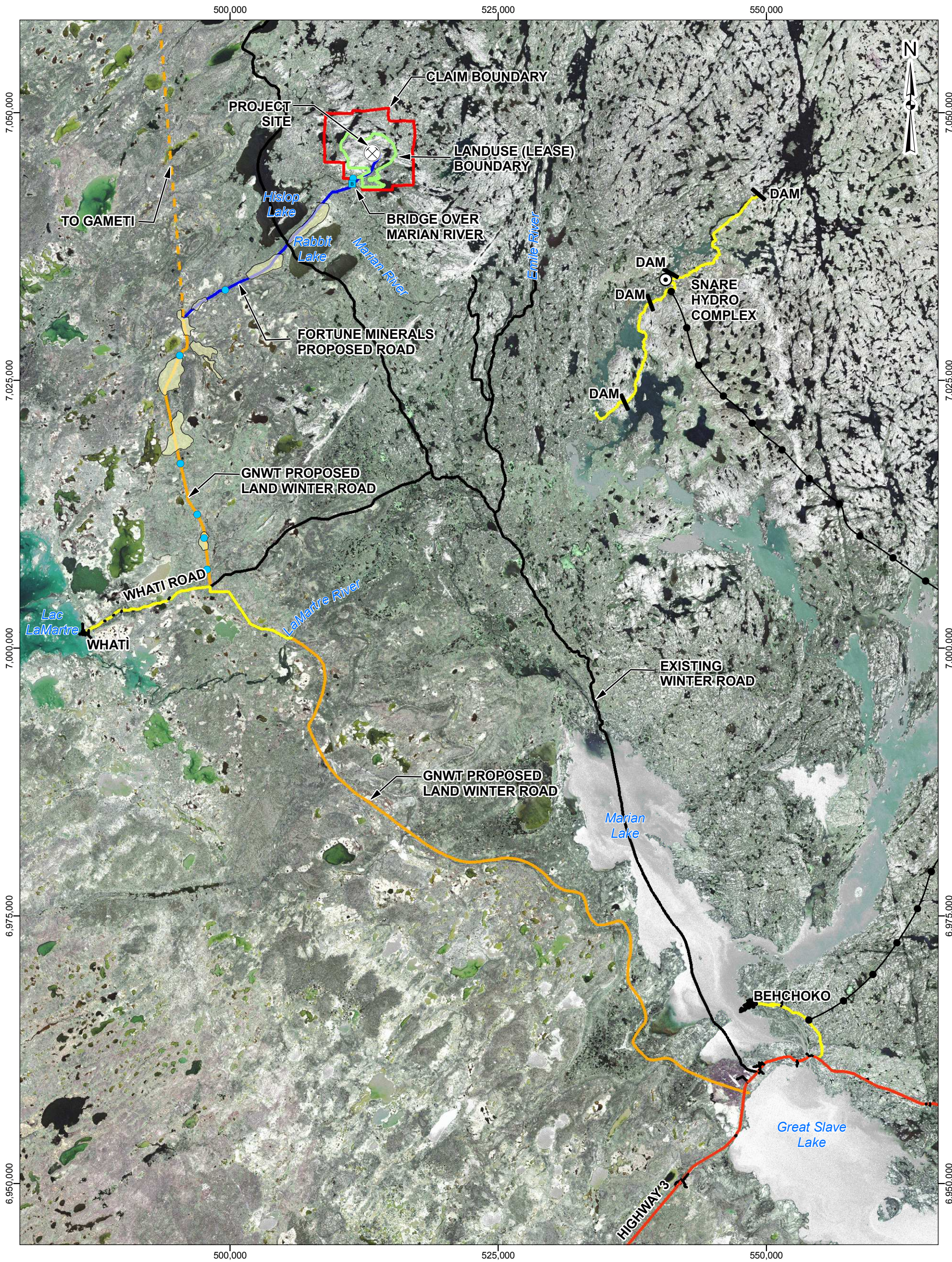


G:\Projects\2008\08-1118-0043_Nico_Fortune_Minerals\GIS\MXDs\Draft\October2008Report\Fig5_PotentialRoadOverview11x17_portrev8bw.mxd




LEGEND:

- COMMUNITY
- ⊙ SNARE HYDRO COMPLEX
- ⊗ PROJECT SITE
- DAM
- DRAINAGE STRUCTURE/ BRIDGE OVER MARIAN RIVER
- DRAINAGE STRUCTURE
- POWERLINE
- EXISTING WINTER ROADS
- HIGHWAY
- EXISTING ROAD
- PROPOSED ROAD (TO BE BUILT BY GNWT)
- PROPOSED ROAD (TO BE BUILT BY FORTUNE MINERALS LTD.)
- POTENTIAL BORROW AREA
- LANDUSE (LEASE) BOUNDARY
- CLAIM BOUNDARY

REFERENCE:

Base Vector Data - Provided by Fortune Minerals Ltd.; Imagery - Landsat ETM+, GLCF, 2001-07-24 (p048r015 and p048r016); Landuse (Lease) Boundary provided by Fortune (October 8, 2008)
Projection: Transverse Mercator Datum: NAD 27 Coordinate System: UTM Zone 11N



PROJECT		NICO PROJECT FORTUNE MINERALS LIMITED		
TITLE		PROPOSED GNWT ALL-LAND WINTER ROAD RE-ALIGNMENT ROUTE AND FORTUNE ALL- WEATHER ROAD ROUTE		
 Mississauga, Ontario		PROJECT No. 08-1118-0043		SCALE AS SHOWN
		DESIGN	KH	30 Sep. 2008
		GIS	CGE	01 Apr. 2009
		CHECK	KH	01 Apr. 2009
		REVIEW	MR	01 Apr. 2009
		FIGURE: 5		