

The Government of the Northwest Territories Environment and Natural Resources

Public Hearing Presentation – Wildlife Division
Dominion Diamond Ekati Corporation Jay Project
Environmental Assessment

EA1314-01

Yellowknife, NT

September 15th, 2015

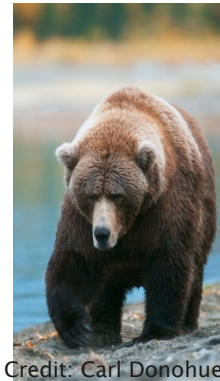
Overview

- ▶ Role of Wildlife Division & participation
- ▶ Technical submission summary & updates
- ▶ Outstanding issues / comments



Impacts to Wildlife (excluding caribou)

- ▶ Grizzly bear, wolverine, gray wolf, raptors and SAR under territorial management
- ▶ General support of approach and conclusions
- ▶ GNWT will continue to work with DDEC on WEMP



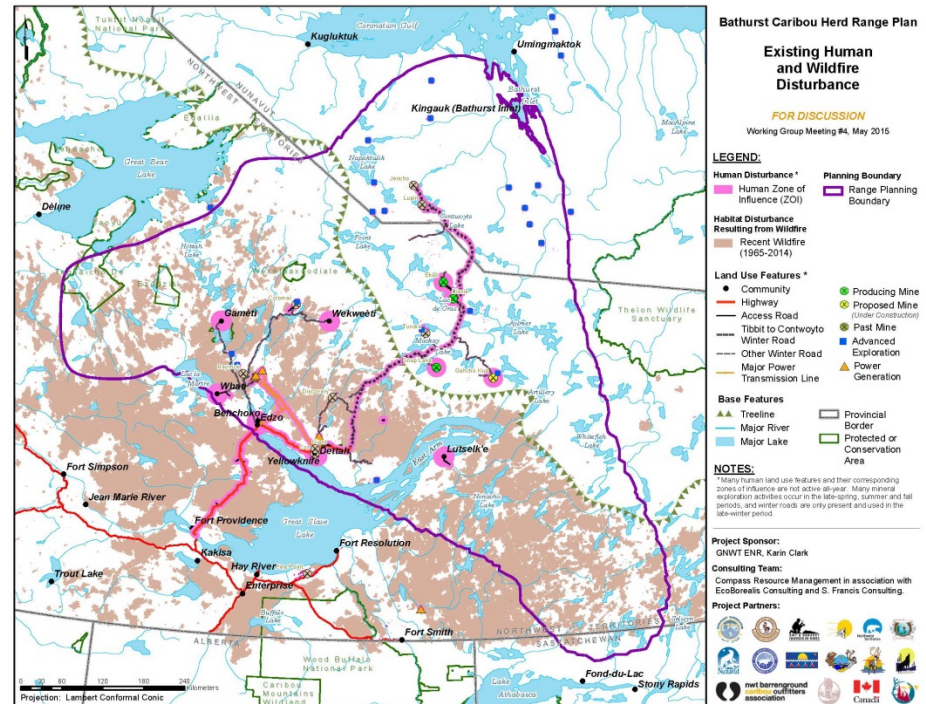
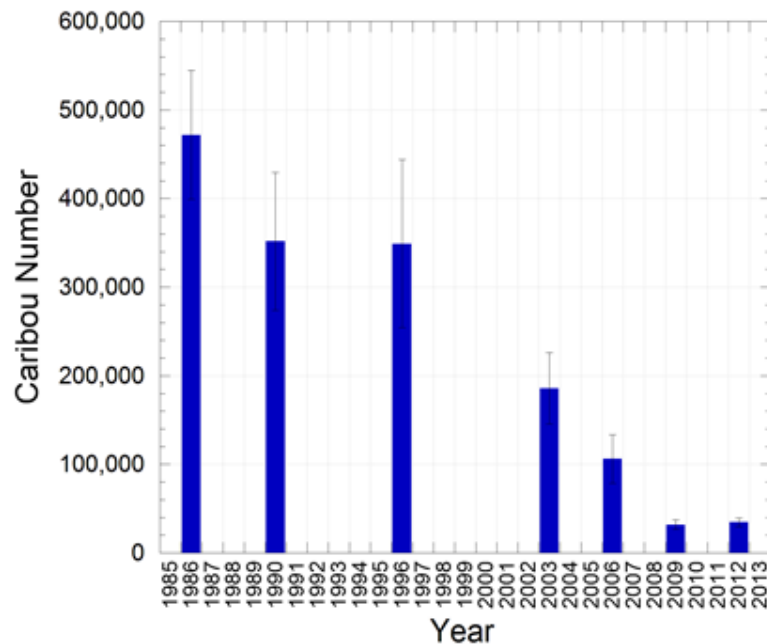
Impacts to Caribou

- ▶ GNWT supports DDEC's approach in assessing impacts to caribou
- ▶ GNWT agrees relative project-specific impacts are likely to be small



However...

The KEY Issue: Cumulative Impacts to Bathurst Herd



Cumulative Effects Assessment Monitoring and Management Framework (CEAMMF) for the Bathurst Herd

- ▶ Management context
- ▶ Numerous IR responses
- ▶ CEAMMF posted to registry
- ▶ GNWT Lead, but collective responsibility



Mitigating cumulative effects

1. Implement robust mitigations & monitoring to minimize impacts of their operation to the extent possible

2. Contribute to collaborative processes and programs to understand and manage cumulative effects

ENR–Wildlife Technical Report Recommendations

- 1) DDEC commitments on a series of recommended revisions to WEMP to ensure adequate mitigation and monitoring
- 2) Clarification of DDEC commitment to regional processes and programs that support CEAMMF



Wildlife Effects Monitoring Plan

- ▶ Wildlife Act Section 95
- ▶ Sufficient level of detail required to provide confidence in effectiveness of actions
- ▶ GNWT notes new plan released July 31



Support for CE programming & processes

- ▶ DDEC has contributed in past on ad hoc basis
- ▶ Measures proposed by other parties may be compatible with this recommendation