

Canadian Zinc All-weather Access Road - 2nd Round Information Requests

Appendix 1 - GNWT-ENR Wildlife Division maps.

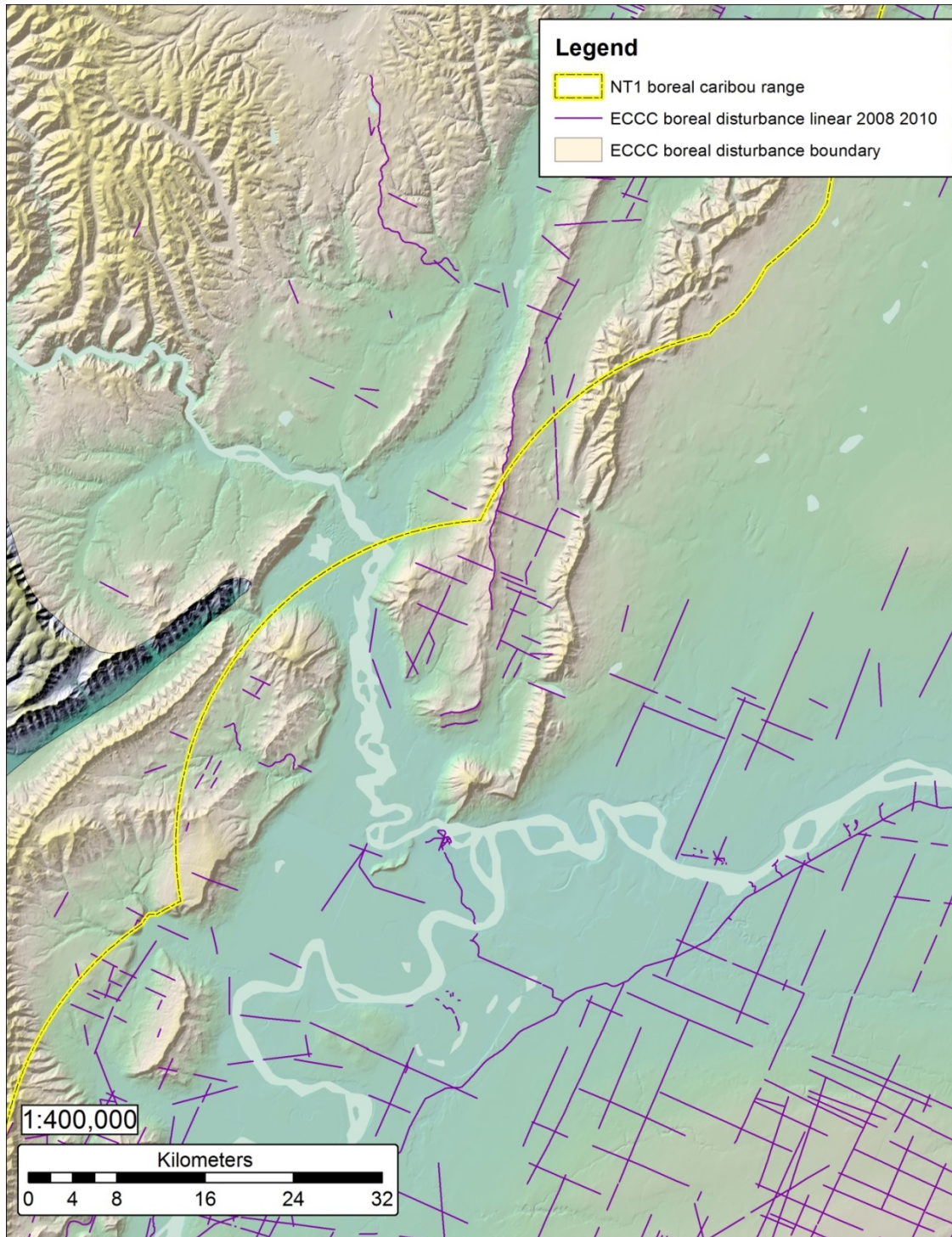


Figure 1 – Linear disturbances mapped by Environment and Climate Change Canada (ECCC) based on 1:50,000 Landsat Imagery from 2008-2010.

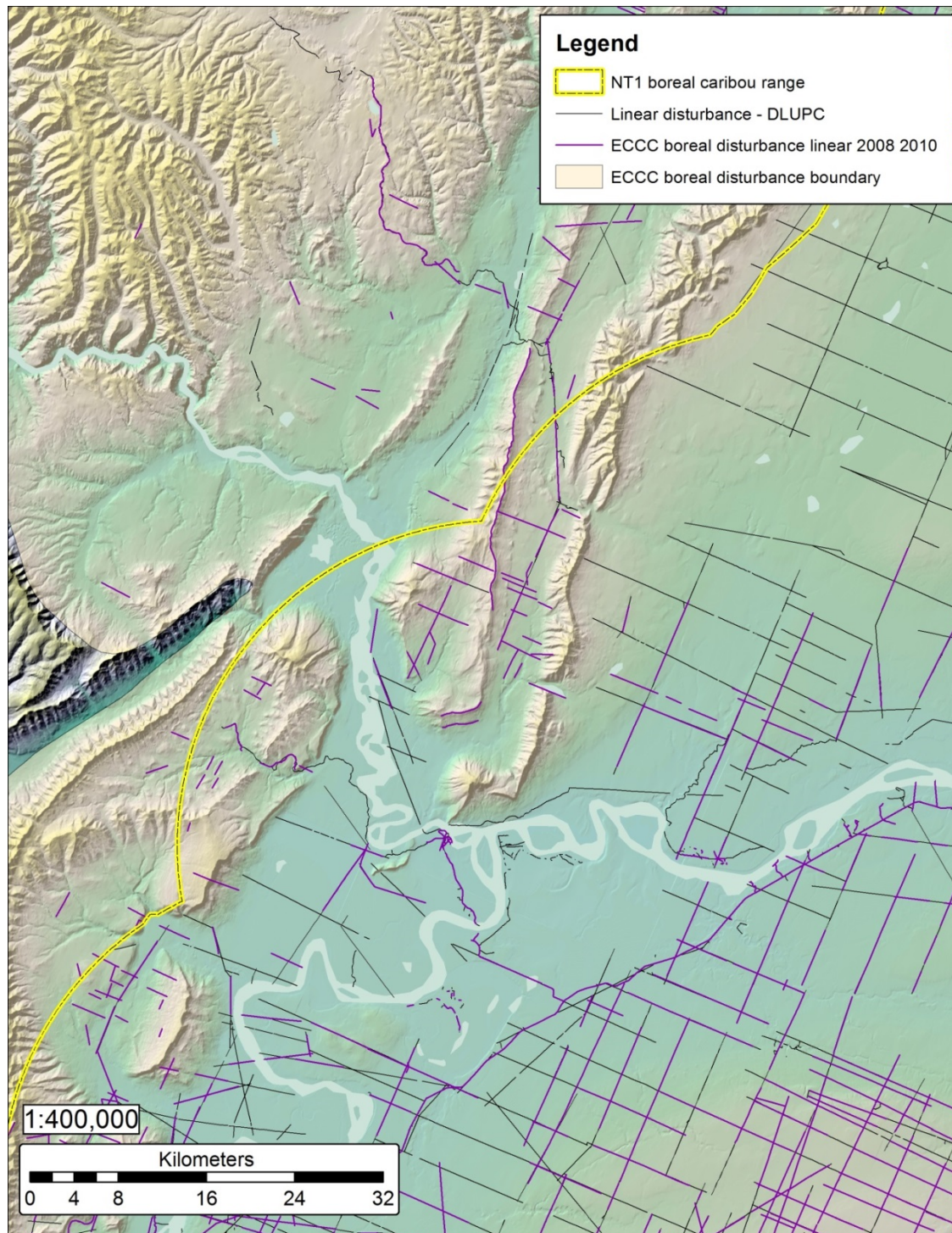


Figure 2 – Linear disturbance features mapped by Environment and Climate Change Canada (ECCC) based on 1:50,000 scale Landsat Imagery from 2008-2010 and linear disturbance features digitized by the Dehcho Land Use Planning Committee (DLUPC) based from IRS imagery (1999-2003) at 1:10,000 scale.

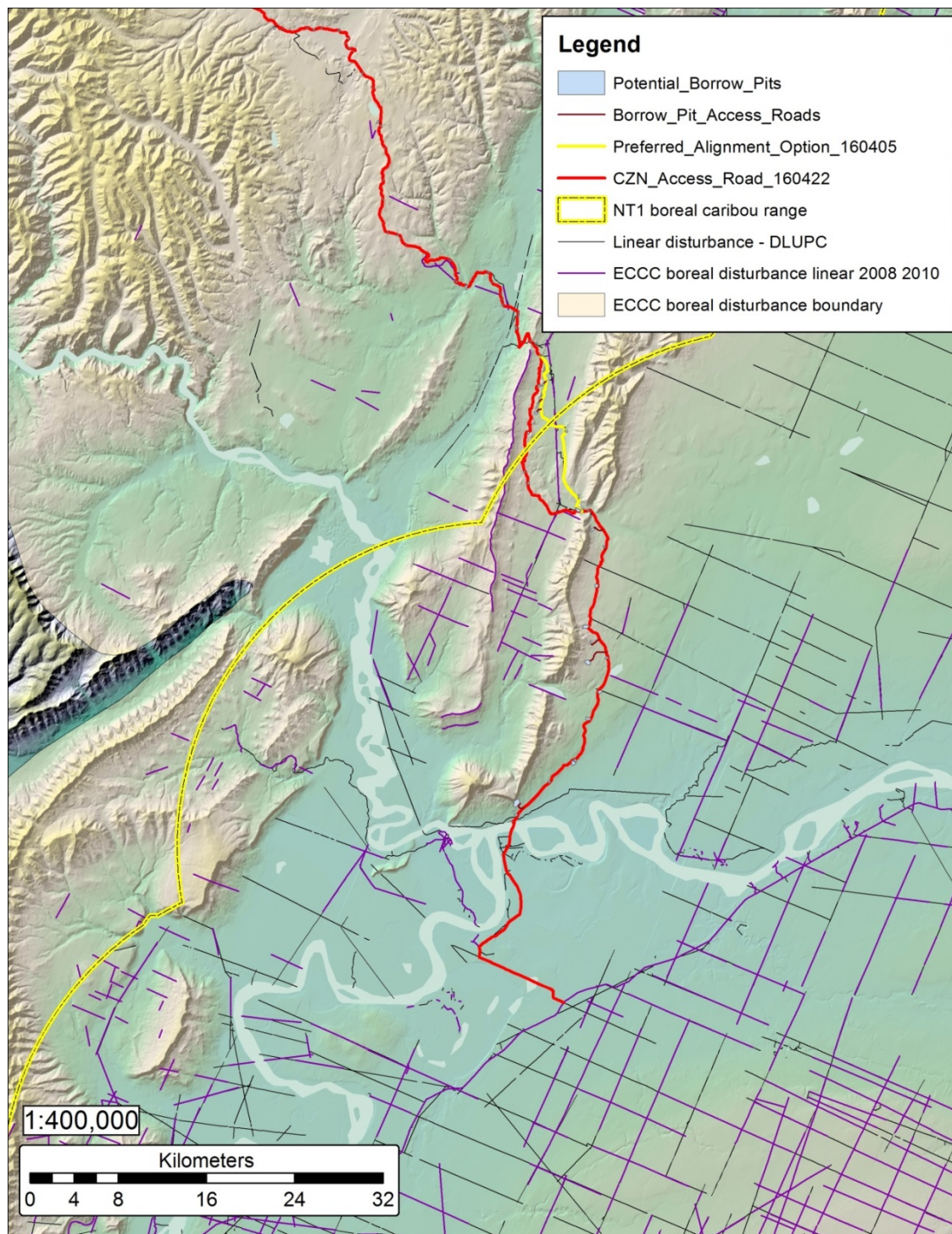


Figure 3 – Proposed CZN all-weather access road alignment (April 05, 2016), preferred alignment option (April 22, 2016), borrow pits and borrow pit access roads, superimposed on linear disturbance features mapped by Environment and Climate Change Canada (ECCC) and the Dehcho Land Use Planning Committee (DLUPC).

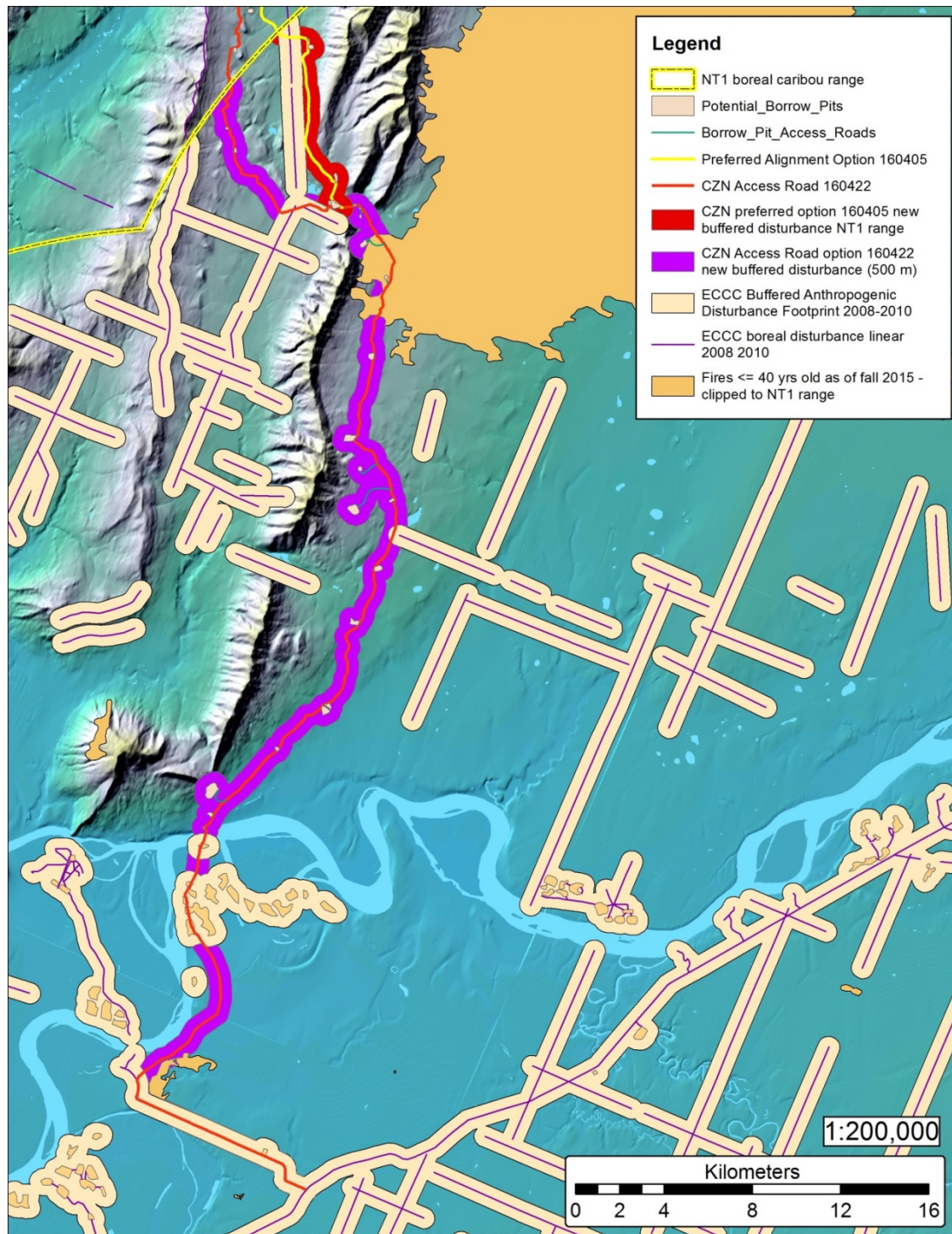


Figure 4 - New 500 m buffered disturbance from CZN access road alignments 160405 and 160422, plus borrow pits and borrow pit access roads. Existing 500 m buffered anthropogenic disturbance mapped by ECCC and fires <= 40 years old are also displayed on the map.