

## **Appendix C – Site Workshop Work Book**

**De Beers Gahcho Kué Project-  
2012 Summer Site Workshop Participants-**

**August 10, 2012 – Yellowknives Dene First Nation**

Peter Sangris  
Philip Liske  
Rose Betsina  
Sarah Plotner  
Jessisca Crapeau  
Shannon Gault  
Todd Slack  
Berna Martin (Interpreter)

**August 18, 2012 – North Slave Métis Alliance**

Bill Enge  
Marc Whitford  
Robert Mercredi  
Ed Jones  
Wayne Langenhan  
Travis Mercredi MacDonald  
Travis Mercredi  
Ashley Mercredi  
Kyle Coumont  
Melvin Enge

**August 20, 2012 – Deninu Kué First Nation**

Chief Louis Balsillie  
Dave Pierrot  
Henry Mandeville  
Darin McKay  
Frank (Rocky) Lafferty  
Stanley Beck  
Marcel McKay  
Gordie Beaulieu  
Stephen Cuthbert  
Rosy Bjornson

**August 21, 2012 – Northwest Territories Métis Nation**

Warren Delorme  
Jonothon Delorme  
Violet Mandeville  
Chuck Heron  
Earl Evans  
Allan Heron  
Ann Lobb  
Wally Schumann  
Tom Unka

**August 22, 2012 – Lutsel K'e Dene First Nation**

Chief DoraENZOE  
Albert Boucher

Mary Rose Enzoë  
Madeline Catholique  
Deserae Jonasson  
Noel Michel  
Gilbert Abel  
Mike Tollis  
Marie Catholique  
Joseph Catholique  
Sam Boucher  
Dennis Drygeese (Interpreter)

**September 13, 2012 – Tlicho Government -**

Skye Ekendia  
Harry Apples  
Edward Camille  
Joe Champlain  
Dora Nitsiza  
Joe Zoe  
Louis Zoe  
Violet Mackenzie (Interpreter)



# *Gahcho Kué Project* **SUMMER COMMUNITY SITE WORKSHOP**

**WORKBOOK 2012**







SECTION 1:  
INTRODUCTION



# Welcome to the

## GAHCHO KUÉ PROJECT SUMMER SITE WORKSHOP

### YOUR HEALTH AND SAFETY IS OUR TOP PRIORITY

Welcome to our advanced exploration camp at Kennady Lake, where we are proposing to construct and operate the Gahcho Kué Mine.

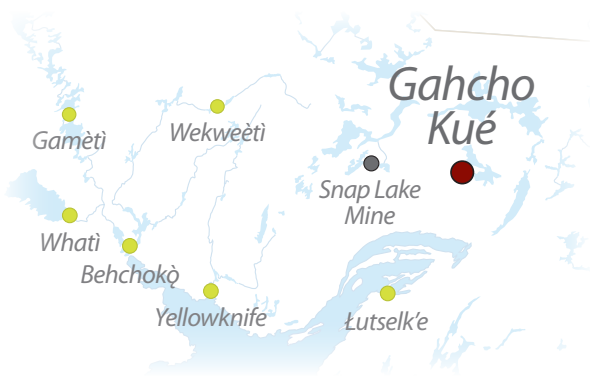
This is a remote, isolated camp and because of this we have strict safety procedures for visitors and staff. This includes the need to wear personal protective equipment (PPE) when you are outside the bear fence surrounding the camp: steel toed safety boots, reflective vest, hard hat and safety glasses. Other PPE may also be required, and we will provide all the PPE you require.

Please pay close attention to the nearest muster station. If you begin to feel unwell, please notify your site host immediately so our camp medic can provide you with the care you need.





## PROJECT OVERVIEW



Kennady Lake, site of the proposed Gahcho Kué mine, is located 280 km northeast of Yellowknife. The Project is a joint venture between De Beers Canada (51%) and Mountain Province Diamonds (49%). Exploration work has been ongoing since the early 1990s. In 2005, De Beers Canada (the Operator) applied for permits to build and operate an open-pit mine – to mine three kimberlite pipes that have been confirmed are economical to mine.

During the 11 year life of the proposed mine, an average of 3 million tonnes of ore will be mined and 4.5 million carats of diamonds recovered annually. Approximately 380 jobs will be created during operations. Strategies for Aboriginal and northern employment are an important part of the proposed project’s human resource strategy. Upon receipt of permits, the initial mine construction will take about two years.

The project is now proceeding through an Environmental Impact Review (EIR) by the Mackenzie Valley Environmental Impact Review Board. Public hearings will take place in December 2012.



## PURPOSE OF THIS WORKSHOP

De Beers Canada is committed to keeping nearby communities informed about our plans. De Beers recognizes that Aboriginal communities, including Traditional Knowledge Keepers, have much to contribute to the development and operation of the proposed project. We are providing ongoing opportunities to communities to provide valued feedback to us about this proposed project.

This summer site workshop is a follow up to community meetings held in February 2012. Plans are also being made to hold community meetings this fall.

This workshop is designed to provide participants with a detailed understanding of our plans, where the mine pits will be located and where facilities will be constructed. The workshop includes an aerial overview, boat tour and archaeology session. We will be asking questions and encouraging participants to provide their unique knowledge about fish, water and wildlife, the Kennady Lake area and monitoring. Information will be used by De Beers Canada in the development of monitoring plans, to refine fish habitat compensation plans and to guide the planned fish-out of Kennady Lake.





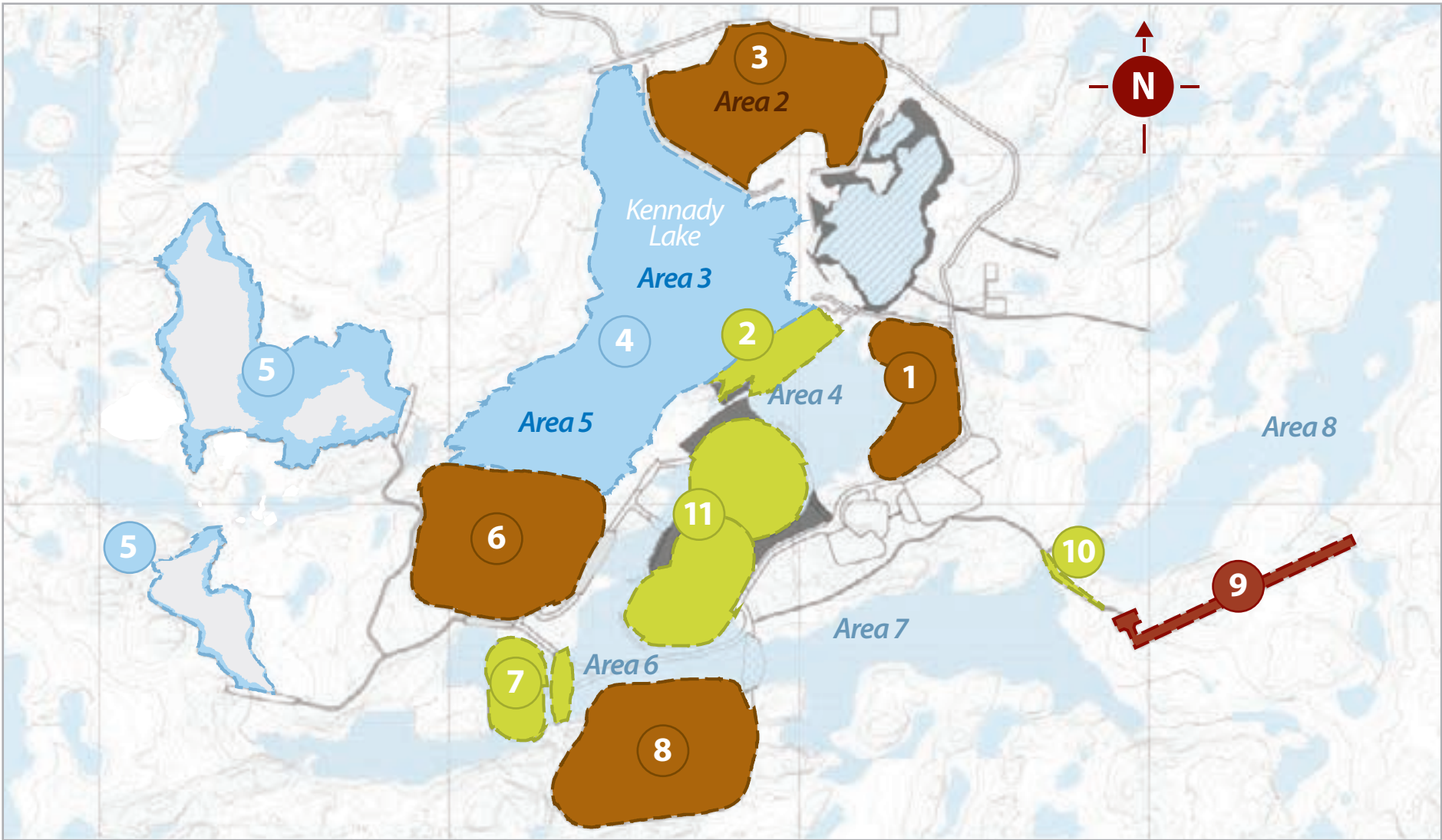
## SECTION 2: AERIAL OVERVIEW



### AERIAL OVERVIEW OF KENNADY LAKE AND DOWNSTREAM WATERSHEDS

- **SEE THE LOCATION OF KEY ACTIVITIES WITHIN KENNADY LAKE** *(Such as where pits, dykes, waste rock etc. will be located.)*
- **GET A SENSE OF THE SIZE OF THE PROPOSED PROJECT FOOTPRINT**
- **SEE THE WATER SHED AND DIRECTION OF WATER FLOWS IN BASELINE CONDITIONS**



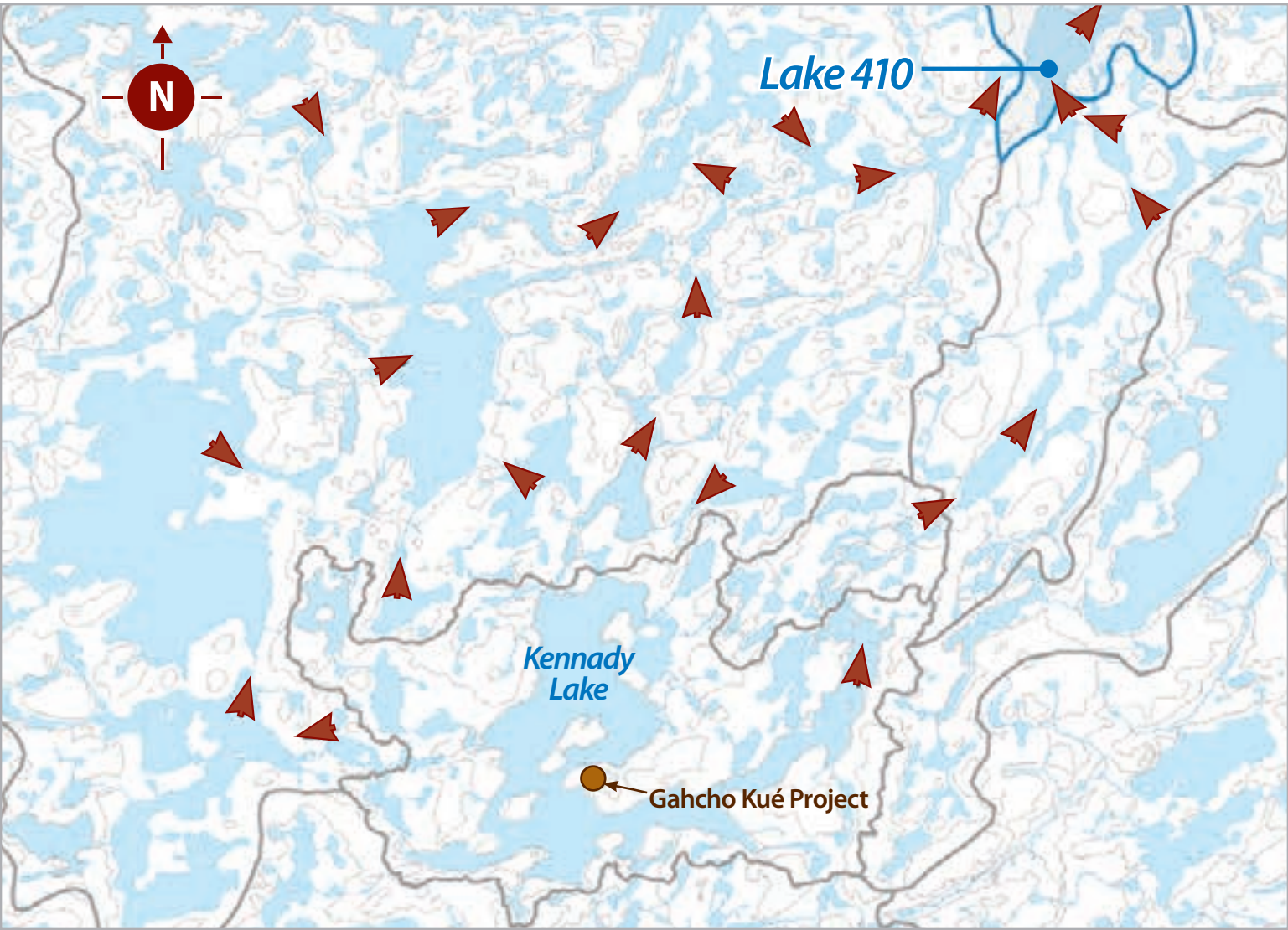


## SITE INFRASTRUCTURE MAP

### POINTS OF INTEREST

- |   |  |    |                     |
|---|--|----|---------------------|
| 1 | Coarse Processed Kimberlite Containment Facility | 6  | West Rock Pile      |
| 2 | Dyke B   | 7  | Hearne Pit / Dyke N |
| 3 | Fine Processed Kimberlite Containment Facility   | 8  | South Rock Pile     |
| 4 | Areas 3/5 - Water Management Pond                | 9  | Airstrip            |
| 5 | Elevated D/E Lakes                               | 10 | Dyke A              |
|   |  | 11 | 5034 / Tuzo Pits    |





## WATER QUALITY MONITORING

- Lake 410 is where the watersheds converge and then flow north to Kirk Lake
- Our plan is to manage water so it remains within its current watershed
- During dewatering, the level of water flow will be carefully controlled to ensure stream banks remain stable and water levels don't exceed peak flows experienced in baseline conditions
- Only water that meets discharge criteria will be released from the mine site to the downstream environment
- A water quality monitoring plan is being developed and discussed with communities



*have* YOUR SAY

As De Beers develops its monitoring plan for the proposed Gahcho Kué Mine, what things are important to you that De Beers should consider?







**SECTION 3:**  
**BOAT TOUR**



**KEY POINTS OF INTEREST AND DISCUSSION**

- LOCATION OF MINING PITS, DYKES, ROCK PILES AND BUILDING LOCATIONS
- SEE WHAT THE FISH HABITAT LOOKS LIKE
- HABITAT COMPENSATION AND WHAT THE MINE WILL LOOK LIKE AFTER MINE CLOSES
- FISH SALVAGE PLAN
- FISH TASTING PLAN

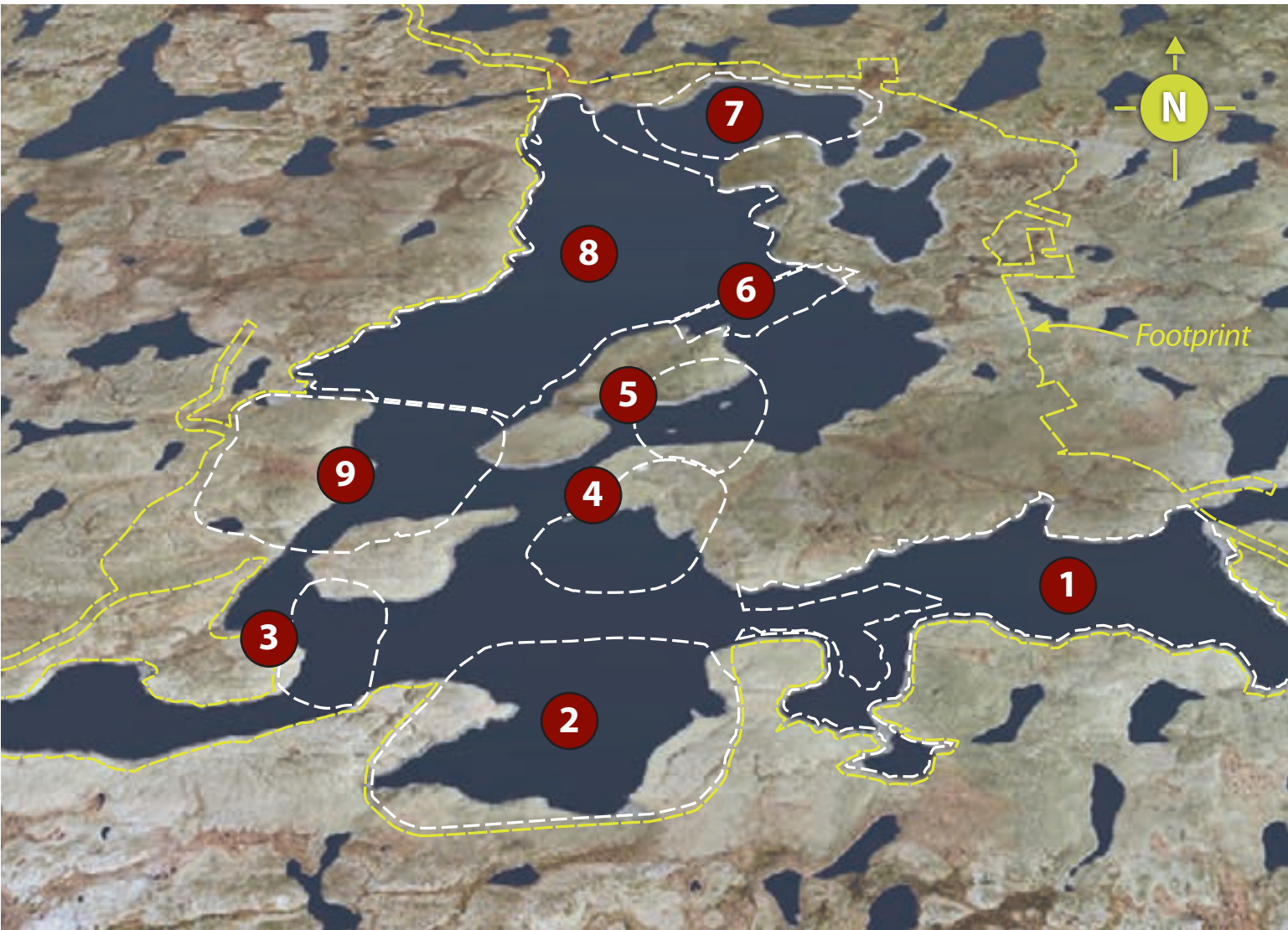


*have* **YOUR**  
**SAY**



How should De Beers involve your community in the fish-out so benefits of fishing flow to your community?





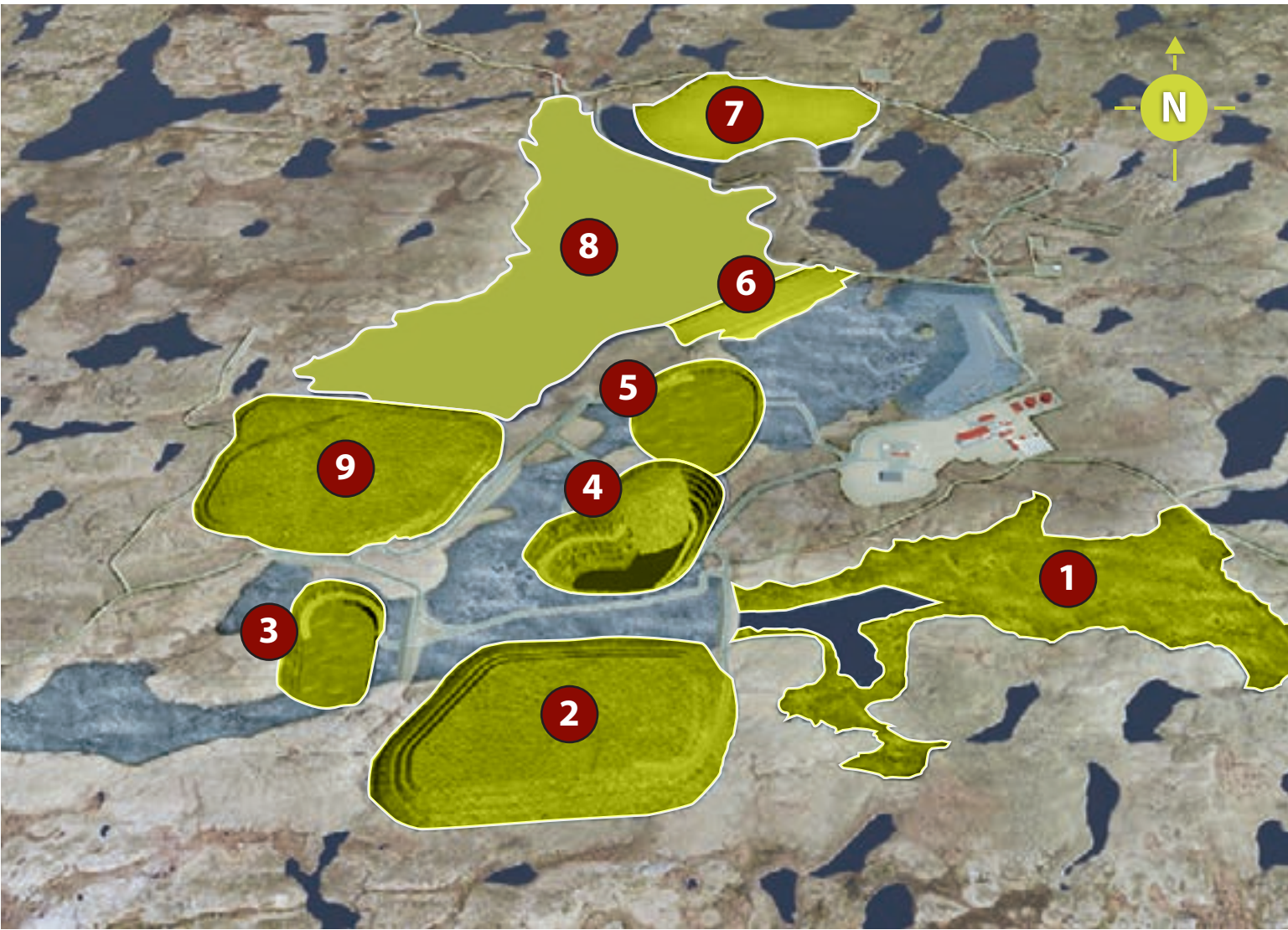
## KENNADY LAKE TODAY

### POINTS OF INTEREST

- |                                 |   |
|---------------------------------|---|
| 1 Area 7                        | 6 Dyke B                                |
| 2 South mine rock pile (Area 6) | 7 Fine PK facility                      |
| 3 Hearne Pit                    | 8 Area 3-5 – proposed fish salvage area |
| 4 5034 Pit                      | 9 West mine rock pile                   |
| 5 Tuzo Pit                      |   |





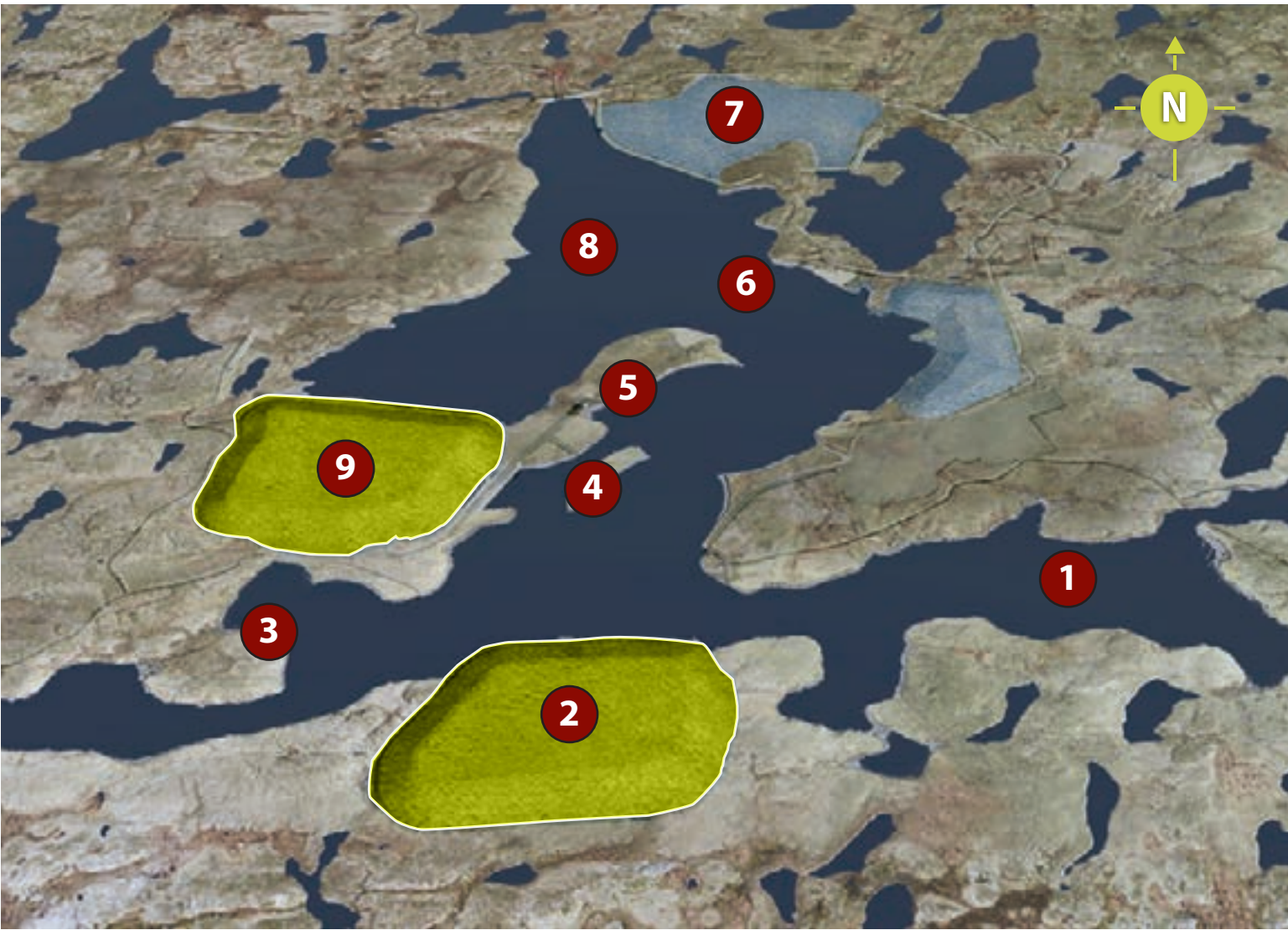


## GAHCHO KUÉ MINE DURING OPERATIONS

### POINTS OF INTEREST

- |                                 |                                     |
|---------------------------------|-------------------------------------|
| 1 Area 7                        | 6 Dyke B                            |
| 2 South mine rock pile (Area 6) | 7 Fine PK facility                  |
| 3 Hearne Pit                    | 8 Water Management Pond (Areas 3-5) |
| 4 5034 Pit                      | 9 West mine rock pile               |
| 5 Tuzo Pit                      |                                     |





## GAHCHO KUÉ MINE POST CLOSURE

### POINTS OF INTEREST

- |                                 |                       |
|---------------------------------|-----------------------|
| 1 Area 7                        | 6 Dyke B              |
| 2 South mine rock pile (Area 6) | 7 Fine PK facility    |
| 3 Hearne Pit                    | 8 Areas 3-5           |
| 4 5034 Pit                      | 9 West mine rock pile |
| 5 Tuzo Pit                      |                       |







## FISH SALVAGE

- Approximately 20,000 fish in Kennady Lake
- Fish species include Lake Trout, Round Whitefish, Arctic Grayling, Northern Pike, Burbot, Lake Chub, Slimy Sculpin and Ninespine Stickleback
- Prior to mining and during dewatering, fish will be removed from Kennady Lake
- Removal of fish will require approval from the Department of Fisheries and Oceans. We will explain this process in this workshop
- De Beers will submit a plan for the fish-out that will include community input gathered here today and in other meetings and workshops



*have* YOUR  
SAY

What are your thoughts on how fish should be removed from Kennady Lake and what can your community do with the fish?







*De Beers involves elders in annual fish tasting at the Snap Lake Mine.*

## MONITORING FOR CLEAN WATER AND HEALTHY FISH

- Water on the mine site will be contained in the water management pond, pumped to a mined-out pit or recycled in the process plant
- Only water that meets the discharge criteria will be released from the mine site to the downstream environment
- Aquatic monitoring plan is being developed that will allow De Beers to make water management changes, should that be necessary
- Monitoring will include downstream locations, as far away as Kirk Lake, 24 km away
- Traditional Knowledge will be incorporated into the aquatic monitoring plan, including a fish tasting event
- De Beers will create new fish habitat as compensation for habitat lost due to mining activity



*have* YOUR SAY

What ideas do you have about how a fish tasting should take place and how Traditional Knowledge should be included as part of monitoring for the proposed Gahcho Kué mine?







## **SECTION 4:** **ARCHAEOLOGY SESSION**

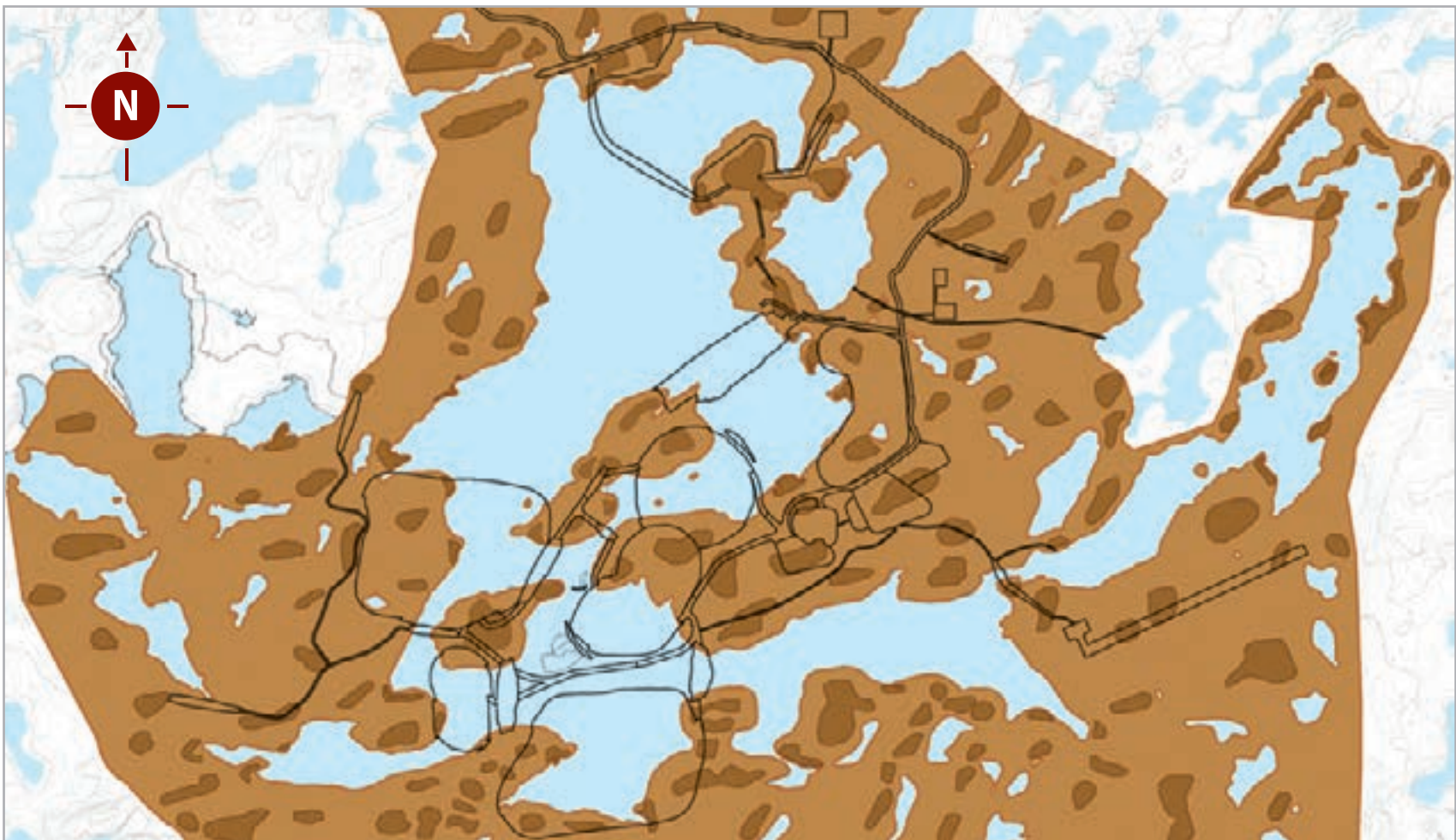


### **PROTECTING ARCHAEOLOGICAL SITES**

---

- **DESCRIPTION OF ONGOING WORK SINCE THE LATE 1990S**
- **EXPLANATION OF STUDIES FOCUSED AROUND KENNADY LAKE AND ALONG THE WINTER SPUR ROAD**
- **LOCAL RESIDENT PARTICIPATION IN ARCHAEOLOGY FIELD STUDIES**
- **EXPLANATION OF HOW THE PROPOSED PROJECT HAS INCORPORATED CHANGES TO RESPOND TO CULTURAL CONCERNS**





 Low Archaeological Potential

 Moderate to High Archaeological Potential

## WHAT WE HAVE LEARNED

- Archaeology studies have identified 254 sites in the area, 80 of which are around Kennedy Lake
- Sites primarily characterized by stone artifacts, either tools or pieces of stone knocked off in the manufacture of stone tools
- Sites typically located on high points of land, eskers, shorelines and ledges





## WHAT HAVE WE FOUND?

- Stone tools and pieces of quartz produced when making tools—known as lithic scatters
- Lithic scatters are generally small in size
- Tent rings and hearth sometimes found at archaeological sites
- Suggest areas used 200-2,500 years ago
- Artifacts collected and retained by the Prince of Wales Northern Heritage Centre
- Sites registered with the Canadian Museum of Civilization



*have* YOUR  
SAY

{ Can you identify any important sites, trails or traditional land use areas that are important to your communities?



## *Gahcho Kué Project* **SUMMER COMMUNITY SITE WORKSHOP**

**WORKBOOK 2012**



**FOR MORE INFORMATION:**

Cathie Bolstad, Director External and Corporate Affairs

De Beers Canada, Suite 300, 5102-50th Avenue, Yellowknife, NT X1A 3S8

Ph: 867-766-7325, Fax: 867-766-3447, Email: [cathie.bolstad@debeerscanada.com](mailto:cathie.bolstad@debeerscanada.com)

Website: [www.debeerscanada.com](http://www.debeerscanada.com)



# Gahcho Kué Project



# Purpose Workshop

- Purpose:
  - ❖ Provide a detailed overview of our plans – mine pits and where the facilities will be constructed
  - ❖ De Beers wants to hear your thoughts on the our mine plans
  - ❖ De Beers will be asking you questions and encouraging participants to share with us their knowledge about fish, water, wildlife, and the land.
  - ❖ De Beers wants to understand how you believe we should monitor, undertake a fish out and how fish habitat can be replaced

# Activity – Helicopter Aerial Tours





# Activity – Boat Tour



## Activity 3 Land (Archaeology and Wildlife)



# Today's Agenda

- 9:30 am Safety Orientation/ Welcome Breakfast
- 10:00 am Introduction to project
- 10:30 am Workshop – Activity 1 (helicopter, archeology, boat)
- 
- 12:00 noon Lunch
- 1:00 pm Continue with Workshop – Activity 2 (helicopter, archeology, boat)
- 2:30 pm Refreshment Break
- 3:00 pm Continue with Workshop – Activity 3 (helicopter, archeology, boat)
- 4:30 pm Refreshment Break
- 5:00 pm Summary of day's activities
- 6:00 pm Depart Gahcho Kue
- 7:30 pm Arrive in Yellowknife



# Gahcho Kué Project

Level I Visitor Orientation



# Welcome

## Orientation Outline:

- ◆ Site Hosts
- ◆ Personal Protective Equipment
- ◆ Safety and Site Hazards
- ◆ Garbage and Smoking
- ◆ Environmental Considerations
- ◆ Vehicles and Equipment
- ◆ Emergency Response
- ◆ Site Map and Muster Stations





## De Beers Site Hosts



**For Your Own  
Safety, All Visitors  
Must be  
Accompanied by a  
Site Host When  
Outside the Bear  
Fence**

# Personal Protective Equipment

## **Mandatory Personal Protective Equipment (PPE)**

- ◆ **CSA approved hard-hat**
- ◆ **CSA approved safety toe boots**
- ◆ **Shatter-proof safety glasses, goggles or corrective lenses**
- ◆ **Reflective clothing or vest**

## **Additional Personal Protective Equipment**

- ◆ **Hearing protection**
- ◆ **Work gloves**
- ◆ **Lifejackets, Personal Floatation Devices**



# Safety and Site Hazards

## Safety

- ◆ **Maintaining your personal safety, as well as the safety of the people around you, is one of the cornerstones of this project**
- ◆ **Report near-misses to your Site Host**
- ◆ **Do not cross any barricades or danger tape**

## Site Hazards

- ◆ **Uneven Ground**
- ◆ **Open Water**
- ◆ **Helicopter**





# Garbage and Smoking

## Garbage

- ◆ All food wastes and burnable garbage into waste receptacles
- ◆ Recyclables, plastics, metals, and combustibles are segregated

## Smoking

- ◆ Minimum of three meters from any door-way, window or fresh air vent
- ◆ Dispose cigarette butts into disposal cans



# Environmental Considerations

## ISO 14001 Certified

- ◆ **Waste Management**
- ◆ **Water Management**
- ◆ **Land Management**
- ◆ **Spills Management**
- ◆ **Noise Management**

## Continual Improvement



# Vehicle and Equipment Use

## Use Requires Training and a Check-Out

- ◆ Boats, pick-up trucks and heavy equipment are all utilized on this site
- ◆ Take extra care and be sure to make eye contact with the operator before approaching, or walking around equipment or vehicles
- ◆ Vehicle pedestrian encounters on roadways



# Emergency Response

## General

- ◆ In an Emergency, your Site Host is responsible for your safety; please remain with them until the all clear

## Code One

- ◆ If a Code One is called, or the camp-wide siren is activated, go to the nearest muster station immediately
- ◆ Do not leave the muster station unless directed to by your Site Host





# Emergency Response

## Discovery of an Emergency Situation

- ◆ If you are the first person to discover a spill, fire, wildlife encounter or an injured person;
  1. Ensure Your Own Personal Safety.
  2. Immediately Call For Help (long blast of the air horn, radio call on SITE channel, or notify any site worker).
  3. You may stay at the scene until the response team arrives, at which point you should go directly to the nearest Muster Station.





# Site Map with Muster Stations





# Site Map with Muster Stations





# Site Map with Muster Stations





# Questions?

