



# Draft Guideline for Major Projects to go Directly to Environmental Assessment

Engagement Workshop  
Yellowknife, NT

December 6, 2022



# Workshop Agenda

Time	Agenda Item
8:30am – 9:00am	Coffee/Tea and Welcome
Opening Prayer with the Yellowknife Dene Drummers	
9:00am – 10:15am	Introductions Presentation on the draft guideline
10:15am – 10:30am	Plenary Q&A/Discussion on Presentation
<b>10:30am – 10:45am</b>	<b>Morning Break (refreshments provided)</b>
10:45am – 12:00pm	<b>Break-out session #1</b> – How well does this guideline meet its goals and objectives?
<b>12:00pm – 1:00pm</b>	<b>Lunch Break (Lunch Provided)</b>
1:00pm – 1:30pm	Reporting back on break-out session #1
1:30pm – 2:15pm	<b>Break-out session #2</b> – What will this guideline mean for you?
2:15pm – 2:45pm	Reporting back on break-out session #2
<b>2:45pm – 3:00pm</b>	<b>Afternoon Break (Refreshments Provided)</b>
3:00pm – 3:45pm	<b>Break-out session #3</b> - What opportunities and barriers will we encounter?
3:45pm – 4:15pm	Reporting back on break-out session #3
4:15pm – 5:00pm	Wrap-up and next steps
Closing Prayer	

# Workshop Goals

## Workshop Goals

1. Help people understand the goals and objectives of the draft guideline.
2. Support Online Review System (ORS) comments (deadline Jan. 13).

### **Review Board staff role**

- Present purpose and content of Draft Guideline
- Facilitate sessions
- Listen

### **Dillon Consulting role**

- Facilitate workshop
- Take notes for summary report

### **Participant role**

- Provide feedback
- Share experiences and knowledge

# Guidelines for Major Projects to go directly to EA

Updated Draft

Mackenzie Valley  
Review Board



# Presentation Outline

- Strategic overview
- Introduction of draft Guideline
- Walk through of the draft Guideline
  - Goals and objectives
  - History
  - Initiation Package
  - What does this mean
- EA Process planning
- Next steps





# The Review Board is committed to continuous improvement and collaboration



*“Making wise environmental impact assessment decisions that balance the diverse values, interests, and knowledge of all residents of the Mackenzie Valley, while ensuring the protection of the environment for present and future generations.”*



# Continuous Improvement in EA Practices in the Mackenzie Valley

- The Review Board's commitment for **continuous improvement** and willingness to **innovate & collaborate** present a range of **opportunities to**:
  - continue to lead
  - learn from others
  - collaborate and move forward together



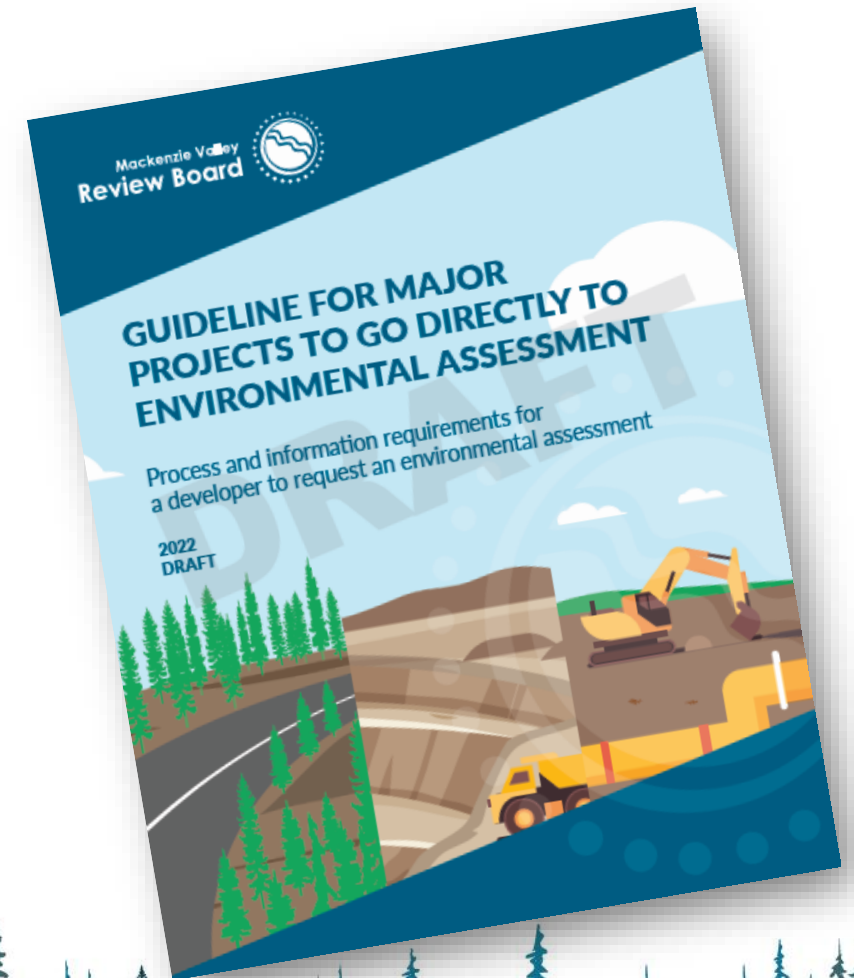




# Guideline for Major Projects to go directly to EA

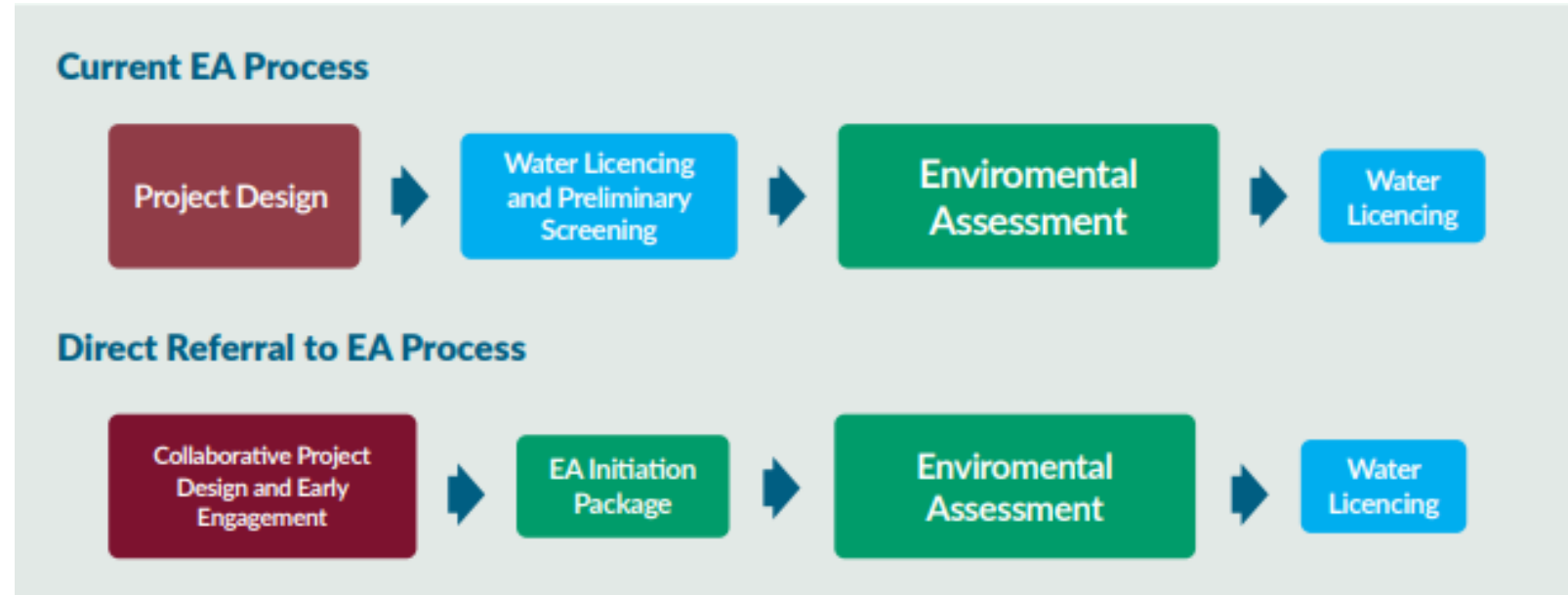
Goals of the Guideline are to:

1. describe an optional **direct pathway to EA**
2. outline the **information** required to request this pathway (the EA Initiation Package)
3. promote early collaborative **engagement**
4. conduct more **efficient and focused EAs**

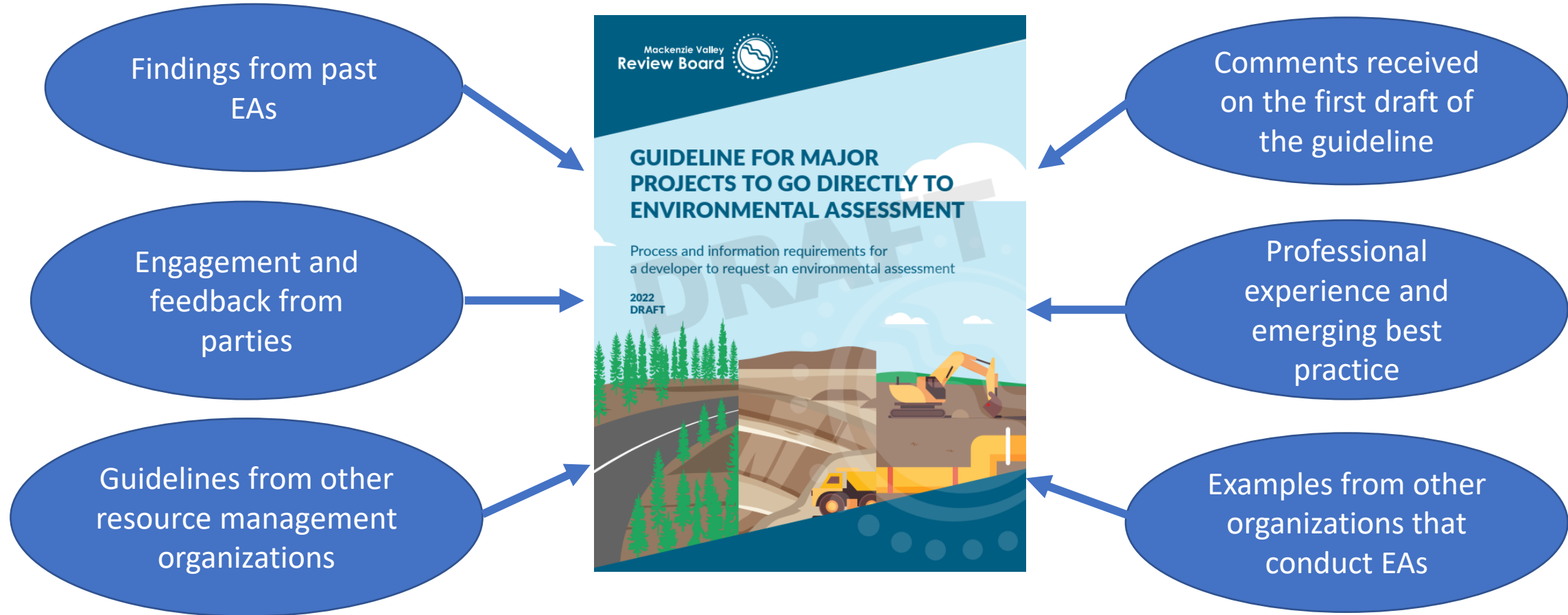


# Legal Framework

- the Review Board has authority to establish guidelines under s.120 of the MVRMA
- ss. 126(3) and 126(4) allow the Review Board to order an EA regardless of the status of a preliminary screening
- the Guideline describes what information the Review Board needs to use its ss.126(3) authority upon request of a developer



# Process of development





## GUIDELINE FOR MAJOR PROJECTS TO GO DIRECTLY TO ENVIRONMENTAL ASSESSMENT

Process and information requirements for  
a developer to request an environmental assessment

2022  
DRAFT



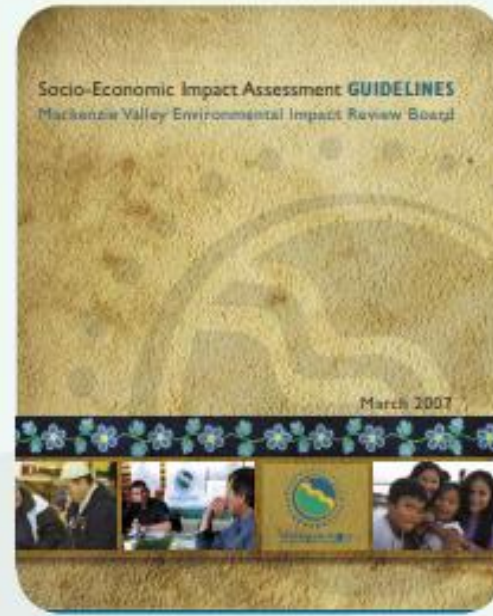
- Current Important Dates
  - Aug 23, 2022 – Available for comments
  - Nov 16, 2022 – Open House (Review Board office)
  - ~~Nov 30, 2022 – Comments due~~
  - Dec 06, 2022 – Engagement Workshop (Explorer Hotel)
  - Dec \_\_ 2022 – Workshop summary available
  - Jan 13, 2023 – Comments due (Extended deadline)





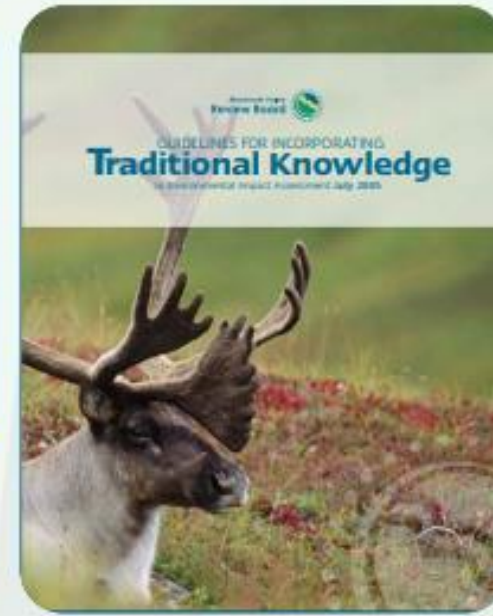
### Environmental Impact Assessment Guidelines

The Environmental Impact Assessment Guidelines set out an overall framework that explains how the environmental impact assessment (EIA) process works and what to expect when participating in the EIA of a proposed development.



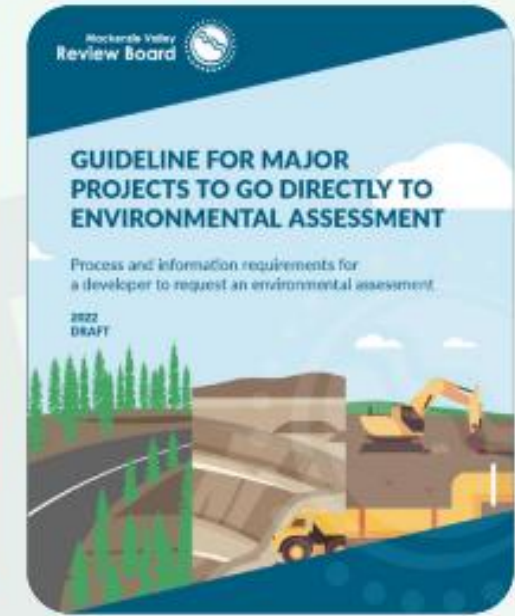
### Socio-Economic Impact Assessment Guidelines

The Socio-Economic Impact Assessment Guidelines outline the Review Board's expectations for the socio-economic impact assessment of proposed developments that may have socio-economic and cultural impacts.



### Guidelines for Incorporating Traditional Knowledge in EIA

The Guidelines for Incorporating Traditional Knowledge in Environmental Impact Assessment explain what the Review Board expects from developers when working with Traditional Knowledge holders and how Traditional Knowledge holders can share their knowledge directly with the Review Board during the EIA of a proposed development.



### Guideline for Major Projects to go directly to Environmental Assessment

The EA Guidelines for Major Projects outline an optional direct pathway to EA for developers, and the information developers must provide to request such a referral.



What is actually IN  
the draft  
guideline?

Mackenzie Valley  
Review Board



# Chapter 1: Introduction



Describe the optional pathway for developers to request an EA directly from the Review Board



Outline what type and level of information developers must submit when using this approach



Make sure the Review Board has the information it needs to make a decision about ordering an EA



Get major projects into EA earlier to reduce regulatory and administrative burdens



Promote early, ongoing, respectful collaboration between the developer and parties



# Goal 1: Optional Direct Pathway

## Current EA Process



## Direct Referral to EA Process





# Goal 2: Outline information requirements

Better information at the start of an EA:

- supports more meaningful participation by parties, helping them to make informed and timely decisions about how they will participate in the EA process.

Better participation from parties:

- leads to better evidence, creating better conditions for decisions by the Review Board.



# Shifts in timing and nature of information

## Current process

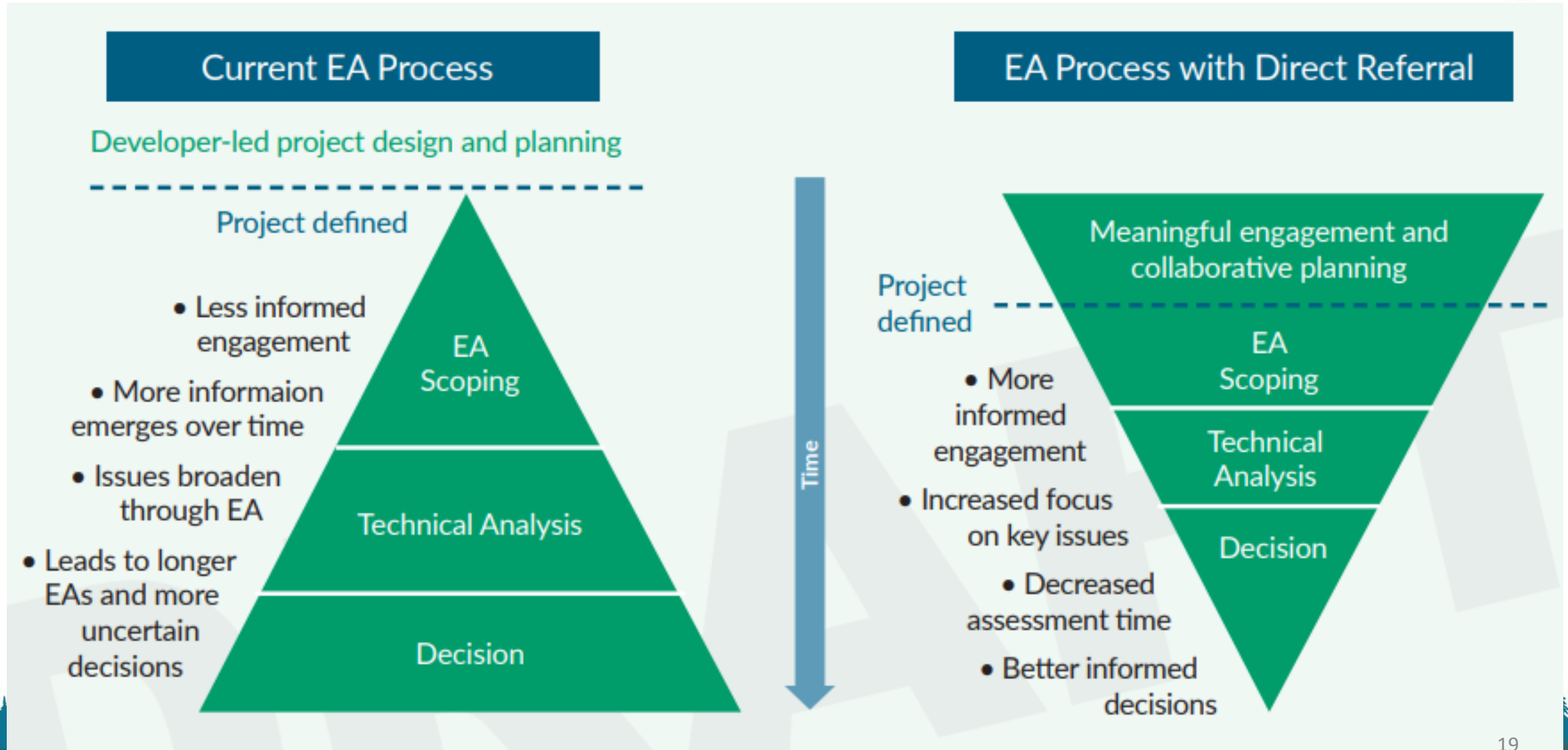
- Some information in the initial application
- Thorough information in the DAR

## Direct referral pathway process

- More **early** engagement to facilitate earlier information
- Thorough information **earlier** in the process
- More analysis of impact pathways and assessment methods **earlier** in the process
- More focus on **collaborative**:
  - project planning between developer and parties
  - Identification of impacts and mitigation



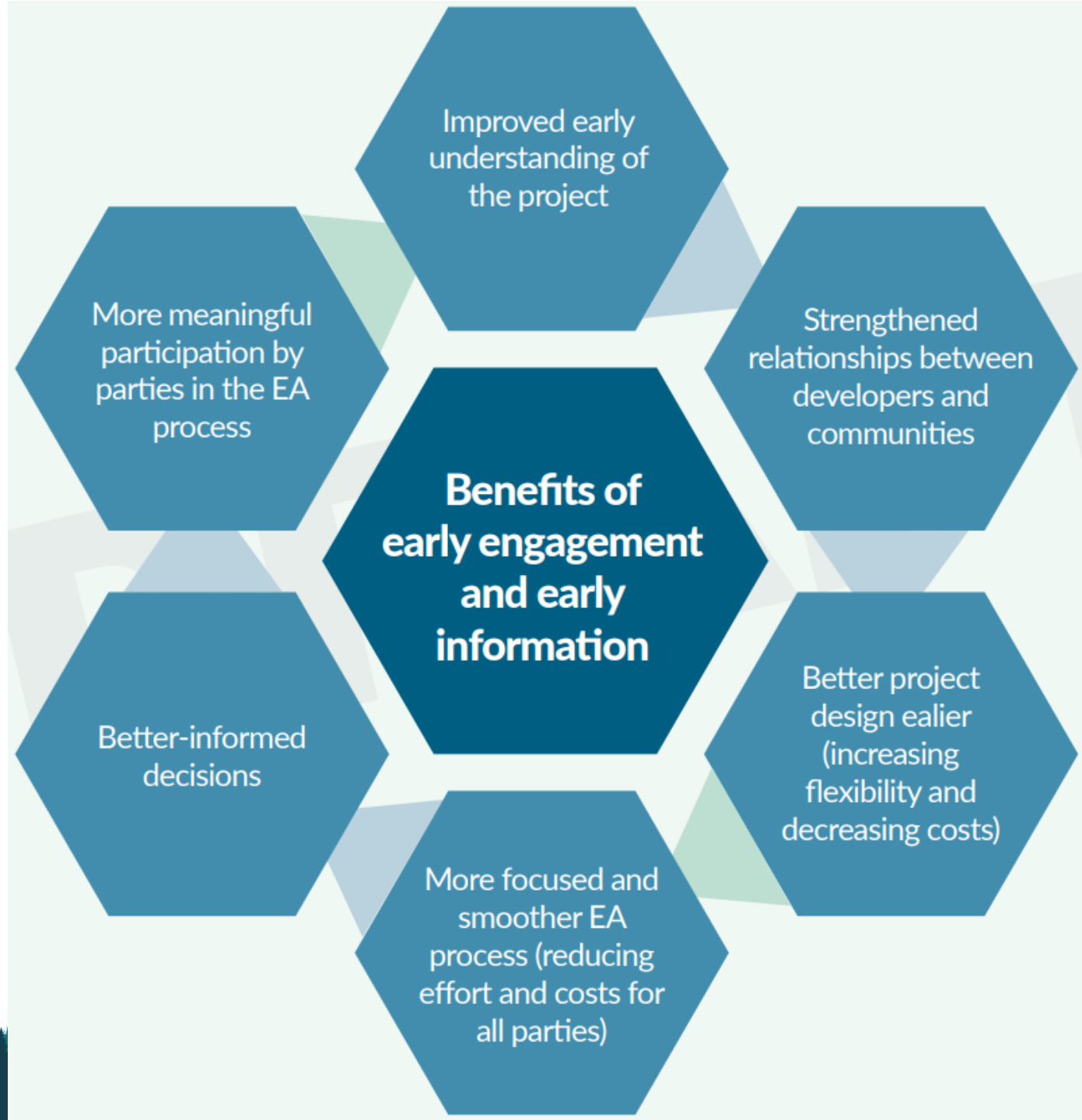
# How can the Guideline Improve EA?



# Chapter 2: Collaborative Project Planning and the Importance of Early Engagement

**Intent** is for the developer to:

- engage early
- meaningfully consider issues raised
- adjust their project based on what they hear





# Chapter 3: EA Initiation Package

Developers who want the Review Board to order an EA must provide sufficient information about:

1. Detailed project description
2. Environmental baseline data collection
3. Potential impacts and mitigations
4. Developer's Assessment Proposal
5. Engagement and collaborative project planning



# Initiation Package

## 1. Detailed Project Description

### Detailed Project Description

- Basic project information
- Project component information
- Supported by figures, maps and photos

### Plain Language Summary

# Initiation Package

## 2. Environmental Baseline Data Collection

Summary of  
existing baseline  
information

Baseline  
information plan



# Initiation Package

## 3. Potential Impacts and Mitigations

How

What

Where

**Interactions with the biophysical and human environment**





# Initiation Package

## 4. Developers Assessment Proposal

Proposed  
valued  
components

Proposed  
methods

Plain  
language  
summary

# Initiation Package

## 5. Engagement and Collaborative Project Planning



Record of past engagement



Future engagement plan



# What does this mean?

Developers

Indigenous Government and Communities

Federal and Territorial Government

Review Board



# Benefits for: Developers

- **clear expectations** of information needed to start an EA can lead to more timely, efficient and effective EA processes
- strengthened **relationships** with parties
- minimize impacts and **design a good project** with appropriate mitigations through collaborative project planning (reducing the costs of project design changes late in the process)
- work with parties to **identify priority issues** and acceptable assessment methods earlier
- **avoid duplication** of regulatory processes before and after EAs





# Benefits for: Indigenous Governments and Communities

- **improved early understanding of the project** and potential impacts
- **voice concerns** earlier
- **meaningful participation** in collaborative project design, setting priorities for the EA and identifying mitigation
- **strategic planning** on level of involvement in the EA and use of resources



# Benefits for: Federal and Territorial Governments

- **better understanding of project** and potential impacts
- **prioritize** major EA **issues** and separate issues that can be dealt with during permitting
- earlier work with developer on acceptable **assessment methods**
- **more efficient process** in which to review information, ask questions, and identify remaining concerns



# Benefits for: Review Board



- **some issues** may be **resolved** before an EA starts
- **better information** coming into EA
- **more collaboration** between all parties



# EA Process Planning

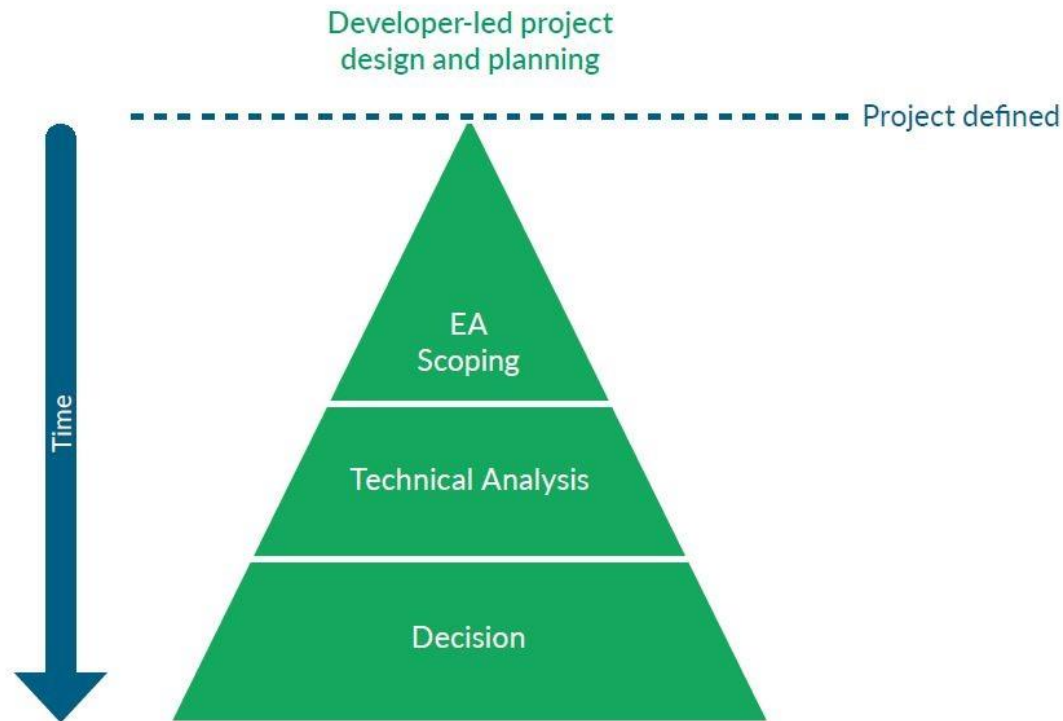
Opportunities?

Mackenzie Valley  
Review Board

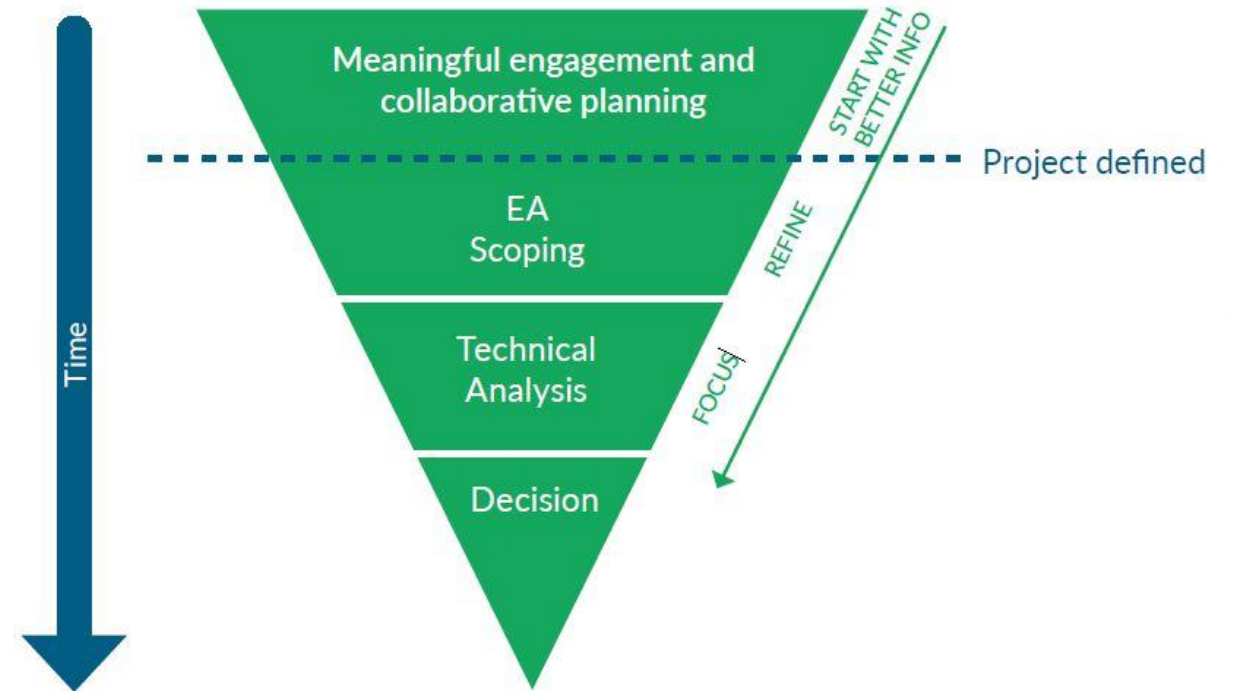




# How can the Guideline improve EA processes?



Current EA Process



EA Process with new Guidelines

# Breakout session

## Things to keep in mind

