



DEVELOPMENT TITLE: *Fireweed Helicopters Operations in Nahanni National Park Reserve*

PROPONENT:

Fireweed Helicopters Ltd.
60 Lodestar Lane
Whitehorse, YT
Y1A 6E6
(867) 668-5888
clint@fireweedhelicopters.com

PROPOSED DEVELOPMENT DATES: June 1, 2019 - March 31, 2020

DEVELOPMENT DESCRIPTION:

Nahanni National Park Reserve is accessed primarily by air (fixed and rotary wing aircraft) for park operational and tourism purposes, other than permit-only road access via the Howards Pass Access Road in the extreme northwestern portion of the park. The majority of air access is facilitated by aircraft charter company outfitters such as Fireweed Helicopters. These companies must obtain a Parks Canada business licence to operate in the park; according to the *Mackenzie Valley Resource Management Act (MVRMA)* their activities must undergo preliminary screening before these licences can be issued. Aircraft operations run throughout the year, though decrease substantially, and are primarily limited to park operational requirements, during the fall, winter, and spring. Day flights, to drop off/pick up overnight visitors and park staff, or facilitate day sightseeing excursions, comprise the majority of charters, though occasional overnight stays are required for park operational purposes.

Activities

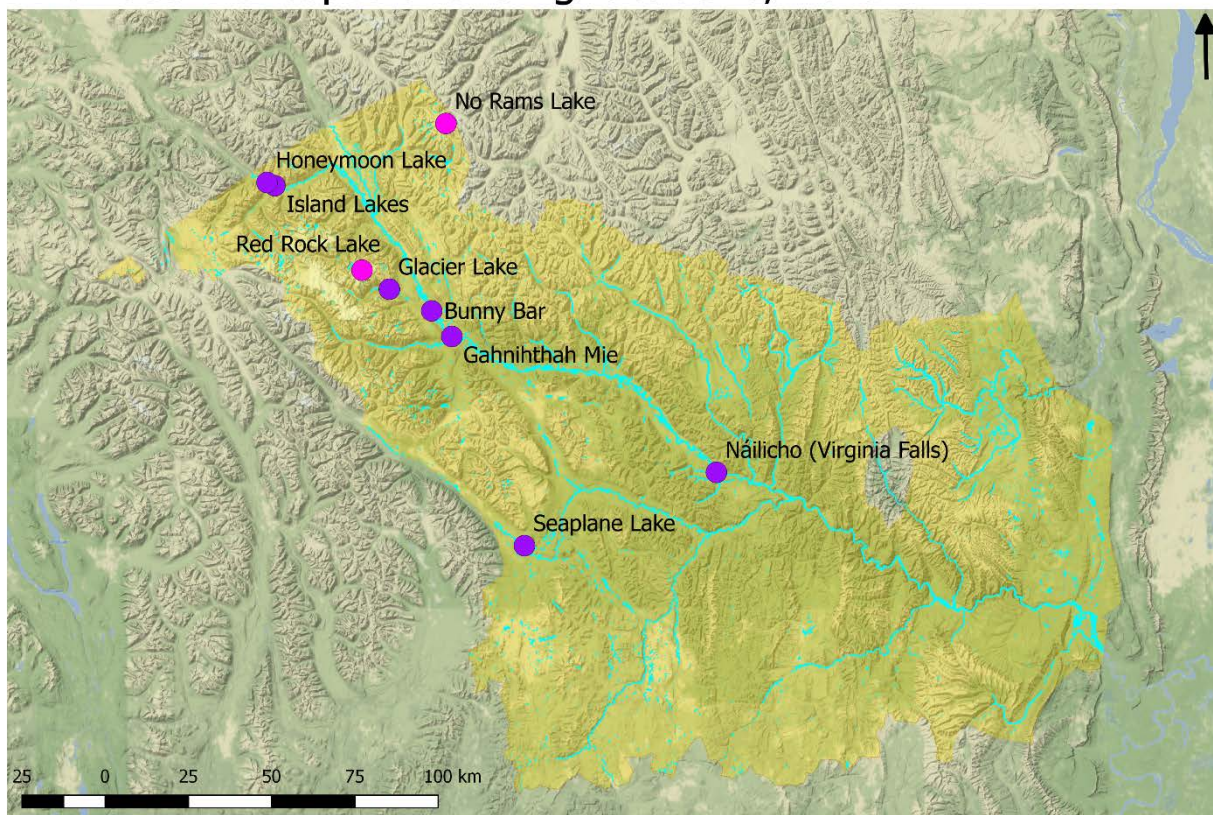
- Day flight seeing experiences
- Commercial transport of visitors and freight for recreational activities such as hiking, mountain climbing, mountaineering, and river trips
- Nahanni NPR operational activities
- Transport of researchers for purposes outside of park operational activities

Aircraft Used by Fireweed

- Bell 206L1
- Bell 206B
- Bell 206L4
- Bell 204C



Fireweed Helicopters landing locations, 2019



Air Based Activity Designated Landing Locations (purple dots)

- (i) South Nahanni River above Náilicho (Virginia Falls): 61°36'25"N, 125°45'12"W
- (ii) Glacier Lake: 62°05'00"N, 127°34'00"W
- (iii) Gahninhthah Mje: 61°05'00"N, 127°12'18"W
- (iv) Bunny Bar: 62°01'35"N, 127°19'35"W
- (v) Seaplane Lake: 61°24'50"N, 126°49'00"W
- (vi) Island Lakes: 62°30'50"N, 128°11'00"W
- (vii) Honeymoon Lake: 62°21'15"N, 128°13'50"W



Air Based Activity Non-Designated Landing Locations Permitted Annually (fuchsia dots)

- Red Rock Lake: 62°07'52"N, 127°42'37"W
- No Rams Lake: 62°30'18"N, 127°14'54"W

Note: all flights start/end location is Whitehorse

Mitigations

Operators will adhere to the mitigations described in the "*Parks Canada Best Management Practice (BMP) for Aircraft Operations and Landings in Nahanni and Nááts'j'ch'oh National Park Reserves of Canada*" and, when applicable, the *Fuel Caching Protocol for Nahanni National Park Reserve and Nááts'j'ch'oh National Park Reserve*.