

Parks Canada
PO Box 1166
#220 5101, 50th Avenue
Yellowknife, NT
X1A 2N8

February 22, 2023

Re: Notification of Commencement of Preliminary Screening of Marine Transportation Services (MTS)

To: Distribution List

Parks Canada will be conducting a preliminary screening of marine transportation operations by Government of Northwest Territories Marine Transportation Services (MTS), which is applying for a business licence in Thaidene National Park Reserve. According to the requirements of the *Mackenzie Valley Resources Management Act*, Parks Canada must determine any public concern, or adverse environmental, social or cultural impacts before issuing a business licence in a national park.

Attached is a description of proposed operations by MTS in Thaidene Nene National Park Reserve for the 2023/2024 season. If you have any comments on this proposal, please submit them to me by **March 15, 2023**.

Thank you. Your feedback is greatly appreciated.

Sincerely,



Jared Ellenor

Ecosystem Scientist, SWNWT Field Unit
Parks Canada
Phone: (867) 445-1083
Email: jared.ellenor@pc.gc.ca



DEVELOPMENT TITLE: Marine Transportation Operations in Thaidene Nene National Park Reserve

PROPOSED DEVELOPMENT DATES: April 01, 2023 – March 31, 2024

DEVELOPMENT DESCRIPTION:

Thaidene Nene National Park Reserve is located on the East Arm of Great Slave Lake, Northwest Territories. The park reserve is a component of Thaidene Nënë Indigenous Protected Area (IPA), which also includes a Territorial Protected Area and a Wildlife Conservation Area (see Map 1). Companies that wish to do business in a national park require a business licence¹. Parks Canada conducts preliminary screenings before issuing these types of authorizations to determine any public concern, or adverse environmental, social, or cultural impacts according to the requirements of the *Mackenzie Valley Resource Management Act*.

This preliminary screening pertains to proposed marine transportation operations by Government of Northwest Territories Marine Transportation Services (MTS), which is applying for a 2023/2024 business licence issuance for Thaidene Nene National Park Reserve. They have held an annual business licence in good standing since 2020-21. Remote communities and local business operators rely on marine transportation companies for the safe and economical delivery of critical supplies. Marine transportation operations include the activities and potential impacts of transporting and delivering dry cargo and bulk fuel for local residents, business operators, and park management. The following activities proposed by MTS would occur within the national park reserve:

- Transportation and delivery of dry cargo, including foods and other assorted goods; and
- Transportation and delivery of bulk fuel.

Marine transportation operations typically occur between early July and late September when Great Slave Lake is ice-free and weather conditions are favorable. Barging routes vary from year to year depending on the services required. Based on the typical transit routes (Map 2), travel within the national park reserve only occurs during transit to Reliance. The typical barging route to Łutsël K'é and Frontier Lodge does not enter the national park reserve (Map 2); however, the barge may need to enter the national park reserve in an emergency situation.

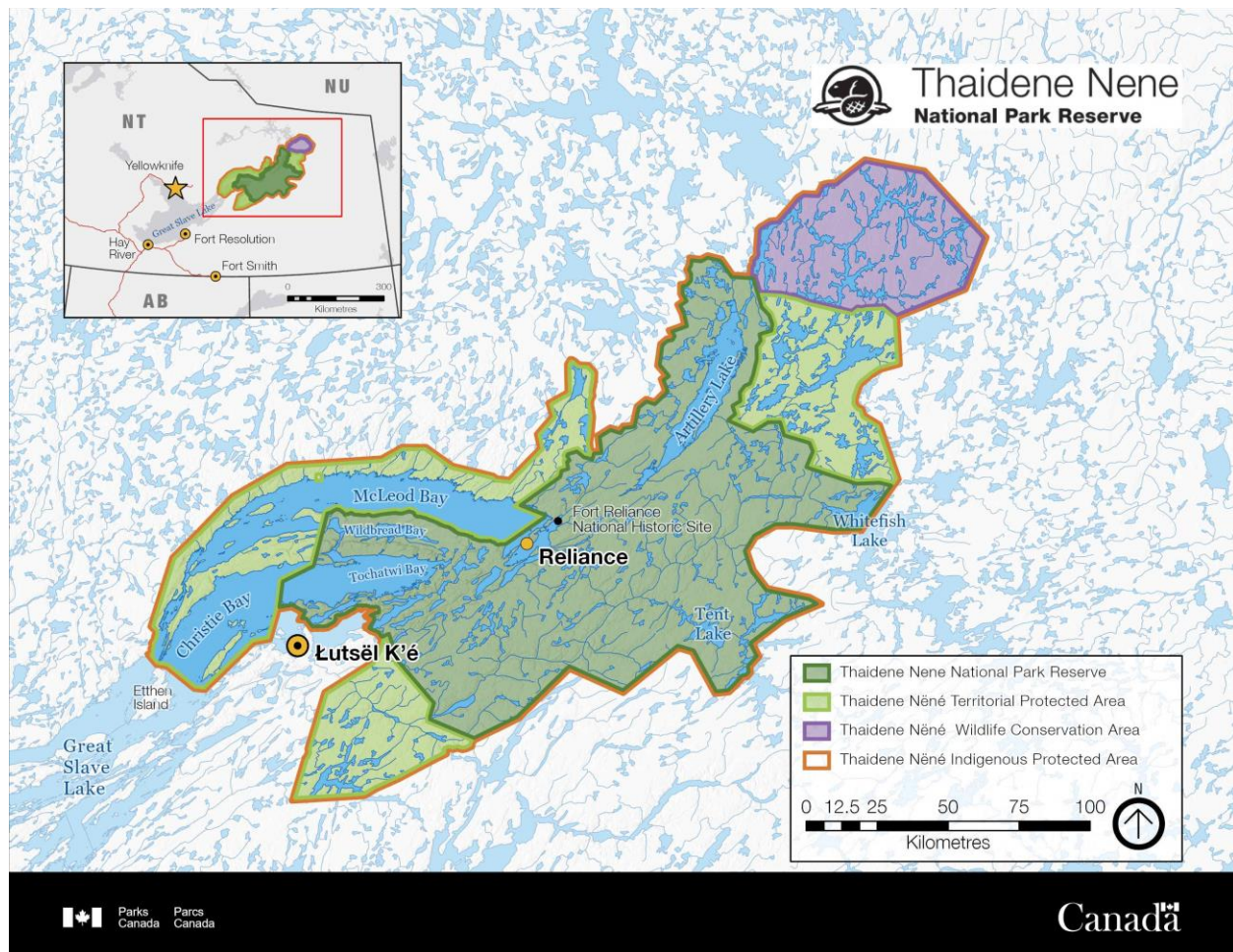
MITIGATIONS:

Operators will adhere to all Transport Canada rules and regulations pertaining to commercial vessel operations and the transportation of dangerous goods. Operators will also adhere to the mitigations described in the "*Draft Interim Best Management Practices for Marine Transportation Operations in Thaidene Nene National Park Reserve*" and, when applicable, the "*Interim Best Management Practices for Fuel Caching in Thaidene Nene National Park Reserve*".

¹ National Parks of Canada Businesses Regulations, s. 4(1).



Map 1: Map of Thaidene Nënë Indigenous Protected Area, including Thaidene Nene National Park Reserve.





Map 2: Proposed barging route for Government of Northwest Territories Marine Transportation Services in the East Arm. Route 3, to Reliance, transits into Thaidene Nene National Park Reserve.

