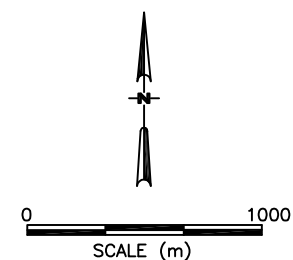


LEGEND

A A'
LOCATION OF SCHEMATIC
HYDROGEOLOGIC CROSS
SECTION (SEE FIGURE 2
FOR CROSS SECTIONS)

PROPOSED BASE CASE
MINE PLAN



Snap Lake Project DE BEERS

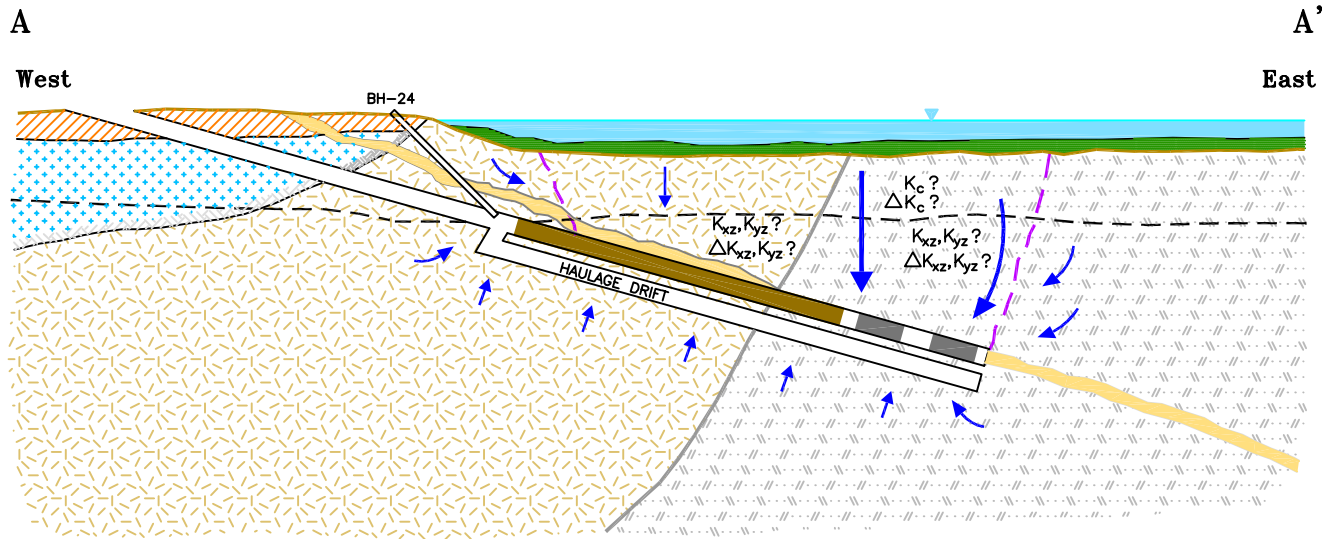
DE BEERS CANADA MINING INC.

JOB NO.	HCI-1780	DATE:	12/4/01
BY:	LCA	DWG FILE:	LOC-MAP-DEC
DRAWN:	SAC	PLOT FILE:	LOC-MAP-DEC
CHECKED:	RJA	PLOT DATE:	12/4/01

Base Map of Study Area

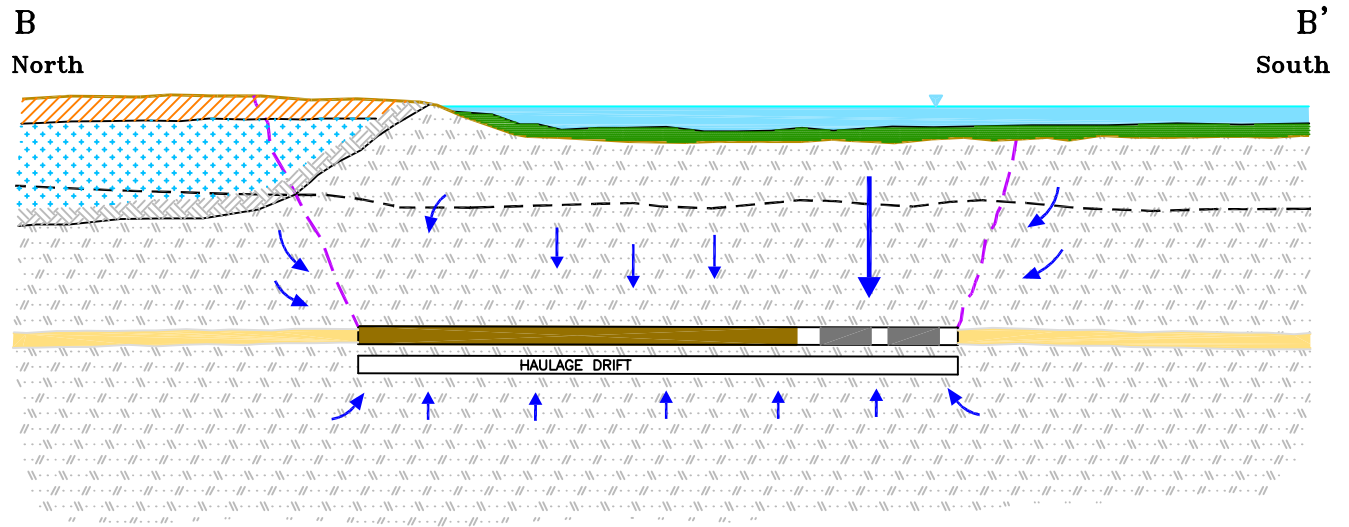
FIGURE
1

NOTES:



EXPLANATION

- ORGANIC MATERIALS AND TILL
- PERMAFROST
- ACTIVE LAYER
- GRANITE
- METAVOLCANICS
- KIMBERLITE DYKE
- BACKFILL
- DEPTH OF RELAXATION DUE TO GLACIAL UNLOADING
- POTENTIAL BREAKLINE
- INFLOW (SIZE APPROXIMATELY PROPORTIONAL TO MAGNITUDE)



Snap Lake Project

DE BEERS

DE BEERS CANADA MINING INC.

JOB NO.	HCI-1780	DATE:	2/21/01
BY:	LCA/AKM/EAA	DWG FILE:	SNAPXSEC
DRAWN:	SAC	PLOT FILE:	SNAPXSEC
CHECKED:	RAA	PLOT DATE:	7/20/01

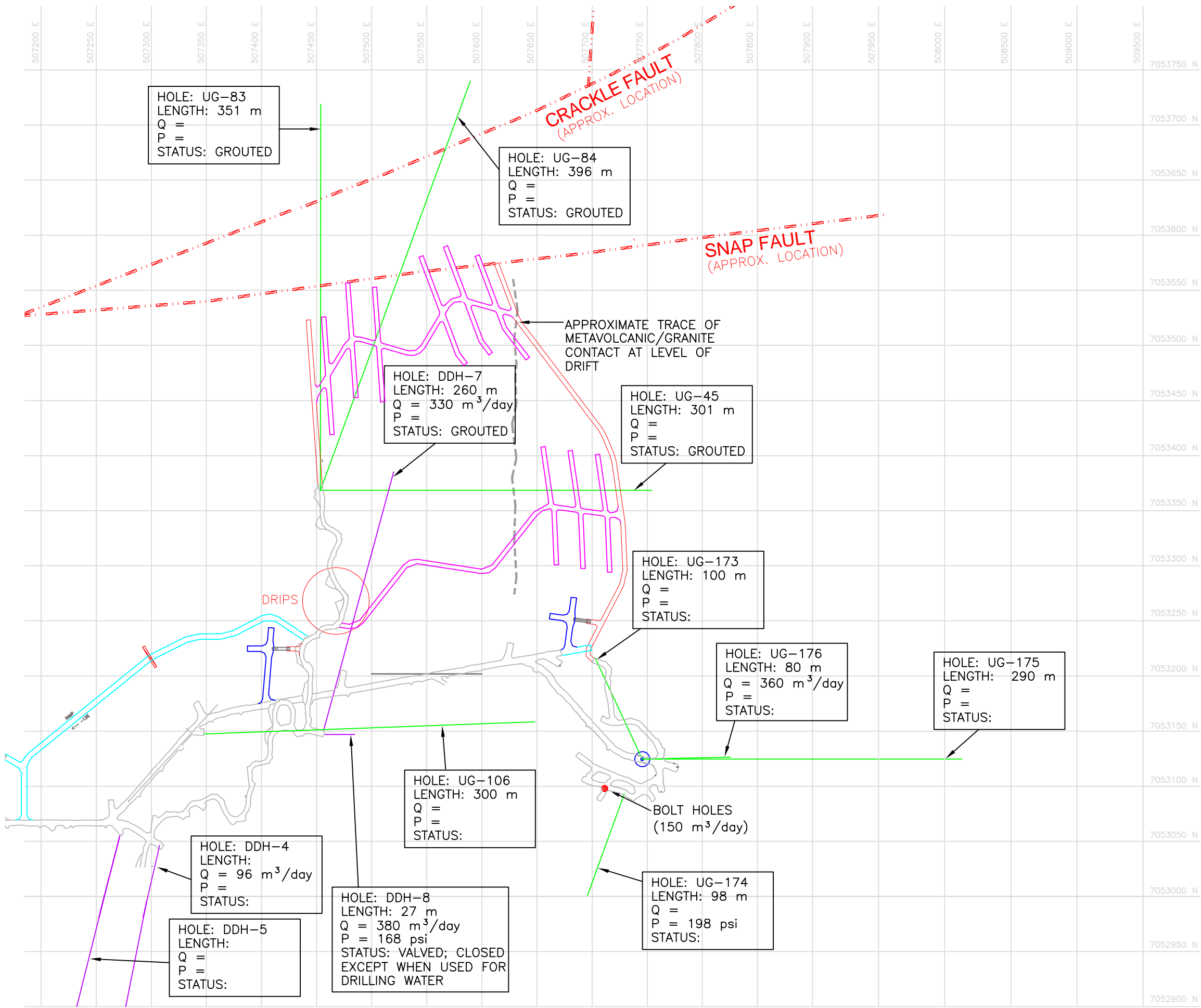
CROSS SECTIONS NOT TO SCALE

SEE FIGURE 1 FOR CROSS SECTION LOCATIONS

Conceptual Hydrogeologic Model of Snap Lake Mine Area

FIGURE
2

NOTES:

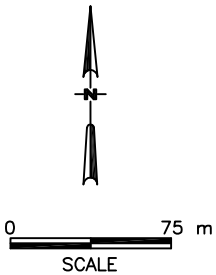


EXPLANATION

- BOREHOLE COMPLETED DURING 2001 AEP
- PREVIOUSLY COMPLETED BOREHOLE
- COMPLETED DRIFT

2001 AEP TESTHOLES

BOREHOLE	AZIMUTH	DIP (DEGREES)
UG-45	090	-5
UG-83	360	-2
UG-84	020	-2
UG-106	90	-4
UG-173	340	4
UG-174	200	6
UG-175	090	0
UG-176	090	+70



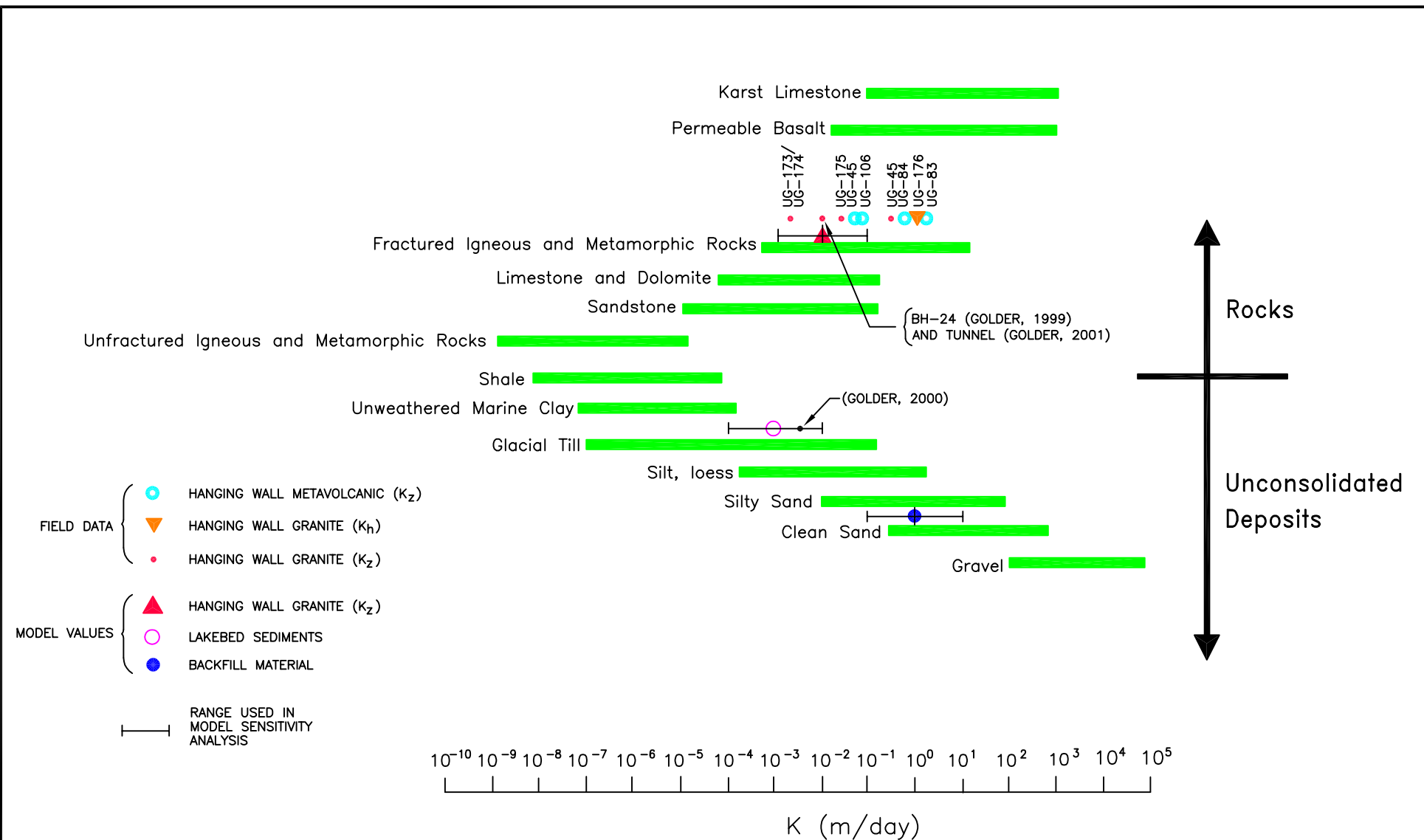
Snap Lake Project
De Beers




2001 AEP Hydrogeologic
Investigation

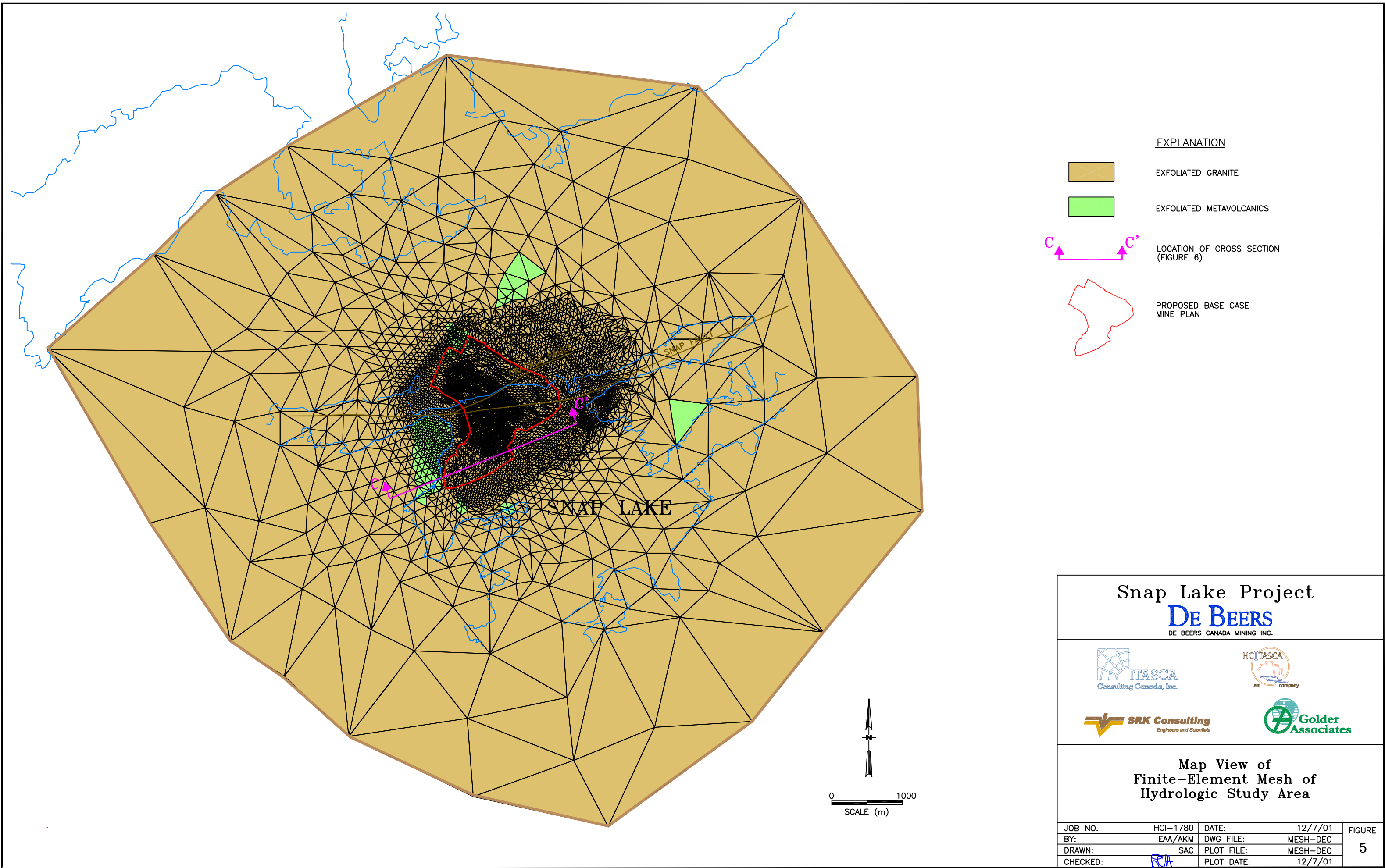
JOB NO.	HCI-1780	DATE:	6/2/01
BY:	LCA/AKM	DWG FILE:	HYD-BASE1
DRAWN:	SAC	PLOT FILE:	HYD-BASE1
CHECKED:	RA	PLOT DATE:	9/20/01







		<div>Snap Lake Project</div> <div>DE BEERS</div> <div>DE BEERS CANADA MINING INC.</div>		<div>Values of Hydraulic Conductivity Used in Ground-Water Model</div>	<div>FIGURE 4</div>
JOB NO.	HCI-1780	DATE:	7/9/01		
BY:	LCA/AKM	DWG FILE:	VAL-HC-DEC		
DRAWN:	SAC	PLOT FILE:	VAL-HC-DEC		
CHECKED:	RCA	PLOT DATE:	12/17/01		


NOTES:




EXPLANATION


 EXFOLIATED GRANITE


 EXFOLIATED METAVOLCANICS


 LOCATION OF CROSS SECTION (FIGURE 6)


 PROPOSED BASE CASE MINE PLAN

Snap Lake Project
DE BEERS
DE BEERS CANADA MINING INC.


**ITASCA**
Consulting Canada, Inc.

**HCI TASCA**
an HCI company

**SRK Consulting**
Engineers and Scientists

**Golder Associates**

Map View of
Finite-Element Mesh of
Hydrologic Study Area

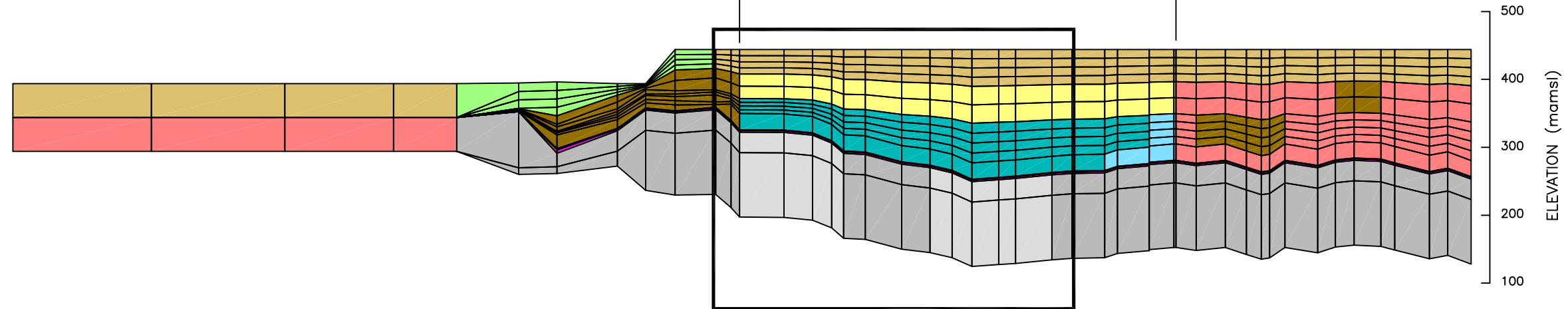
JOB NO.	HCI-1780	DATE:	12/7/01	FIGURE 5
BY:	EAA/AKM	DWG FILE:	MESH-DEC	
DRAWN:	SAC	PLOT FILE:	MESH-DEC	
CHECKED:		PLOT DATE:	12/7/01	

NOTES:

C
SOUTHWEST

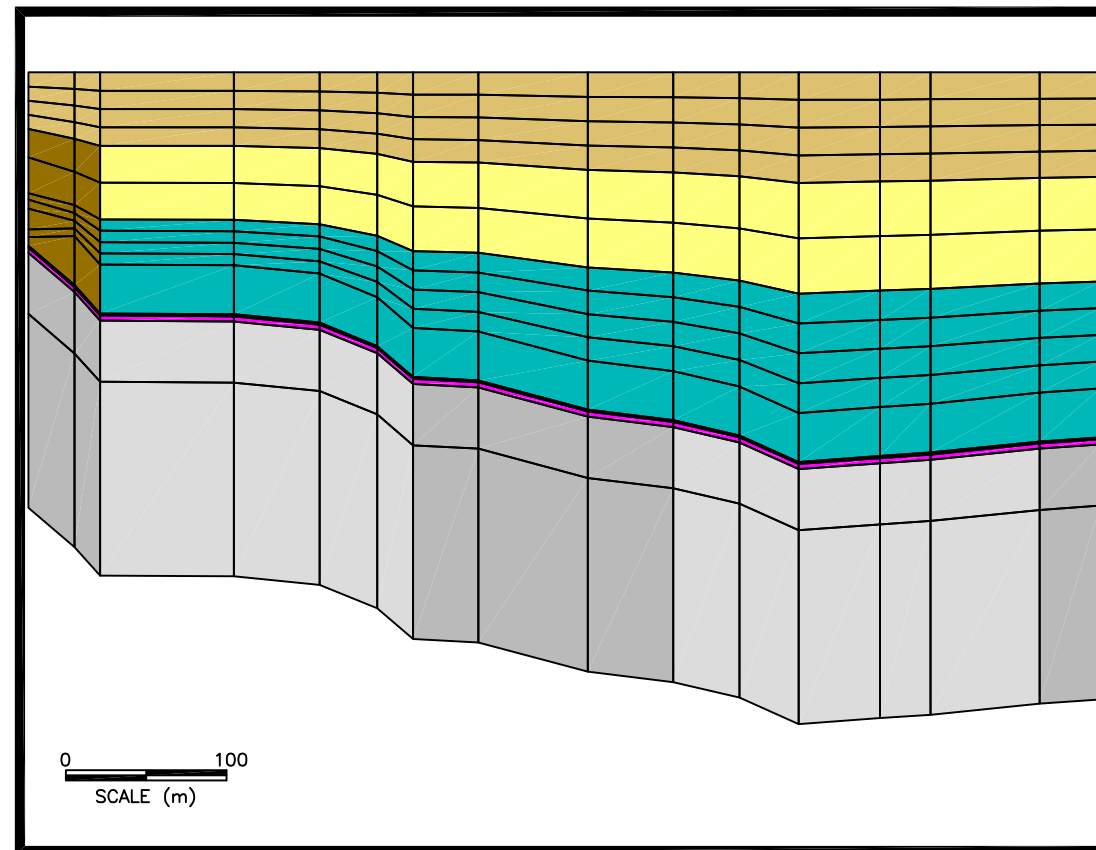
C'
NORTHEAST

APPROXIMATE LOCATION OF SNAP LAKE BASE CASE MINE PLAN



DETAIL A

0 200
SCALE (m)



0 100
SCALE (m)

EXPLANATION

- EXFOLIATED GRANITE
- EXFOLIATED METAVOLCANICS
- METAVOLCANICS
- SUBSIDED GRANITE ABOVE NEUTRAL AXIS
- SUBSIDED GRANITE BELOW NEUTRAL AXIS
- SUBSIDED METAVOLCANIC BELOW NEUTRAL AXIS
- FOOTWALL GRANITE
- FOOTWALL METAVOLCANIC
- GRANITE
- KIMBERLITE
- RELAXATION ZONE

Snap Lake Project

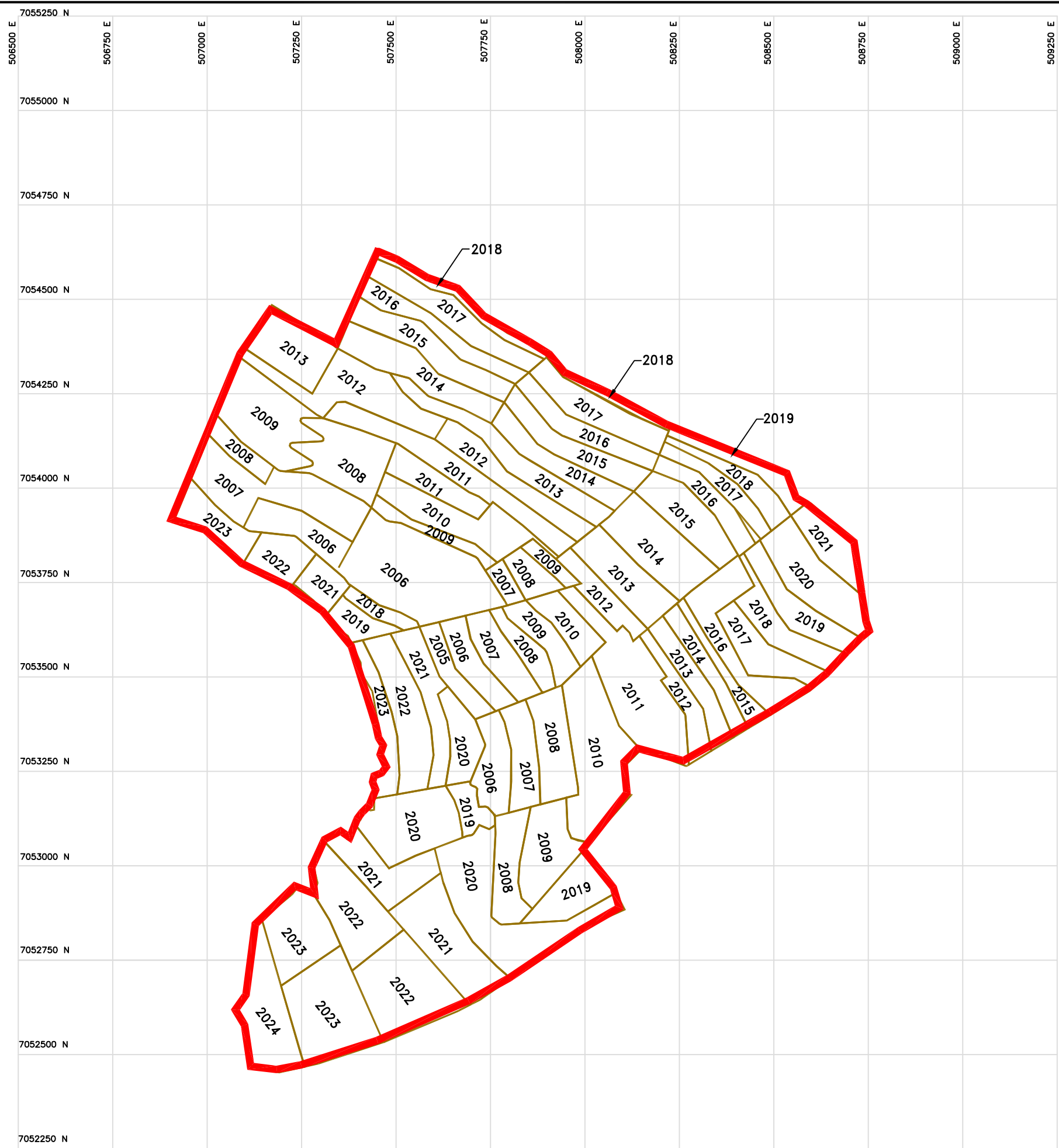
DE BEERS
DE BEERS CANADA MINING INC.



Cross Section of
Ground-Water Model Showing
Discretisation and Layering

JOB NO.	HCI-1780	DATE:	5/9/01	FIGURE 6
BY:	EAA	DWG FILE:	CRS-SEC-DEC	
DRAWN:	SAC	PLOT FILE:	CRS-SEC-DEC	
CHECKED:	RA	PLOT DATE:	12/10/01	

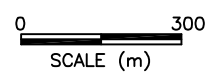
NOTES:



LEGEND

2019 YEAR OF PRODUCTION


— MINE AREA





Snap Lake Project


DE BEERS

DE BEERS CANADA MINING INC.


ITASCA
Consulting Canada, Inc.

HCI
company

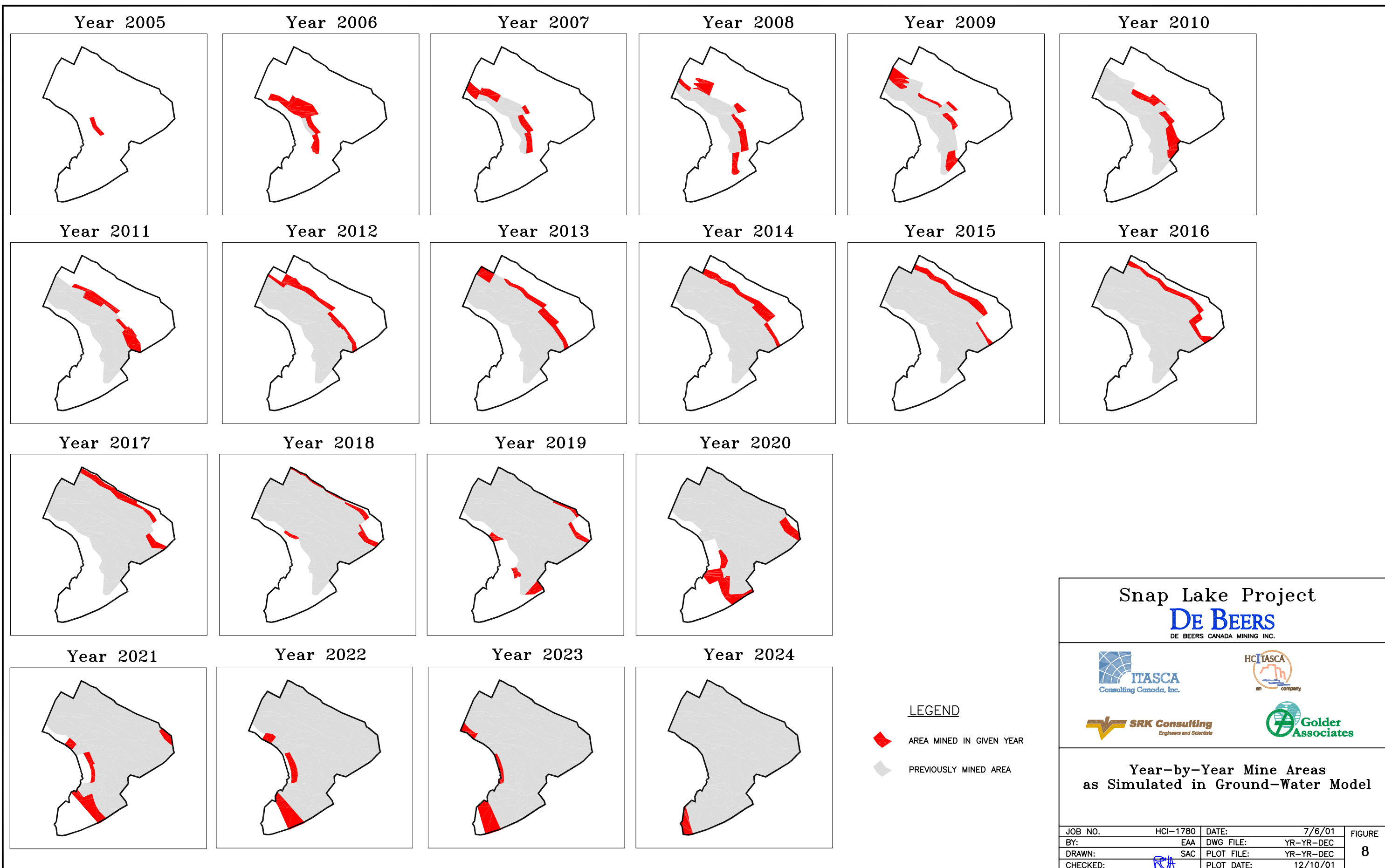
SRK Consulting
Engineers and Scientists

Golder
Associates

Mine Plan Simulated in
Ground-Water Model

JOB NO.	HCI-1780	DATE:	5/9/01	FIGURE 7
BY:	EAA/AKM	DWG FILE:	MP-SIMUL-DEC	
DRAWN:	SAC	PLOT FILE:	MP-SIMUL-DEC	
CHECKED:		PLOT DATE:	12/17/01	

NOTES:



Snap Lake Project

DE BEERS

DE BEERS CANADA MINING INC.

ITASCA Consulting Canada, Inc.

HCTASCA

SRK Consulting Engineers and Scientists

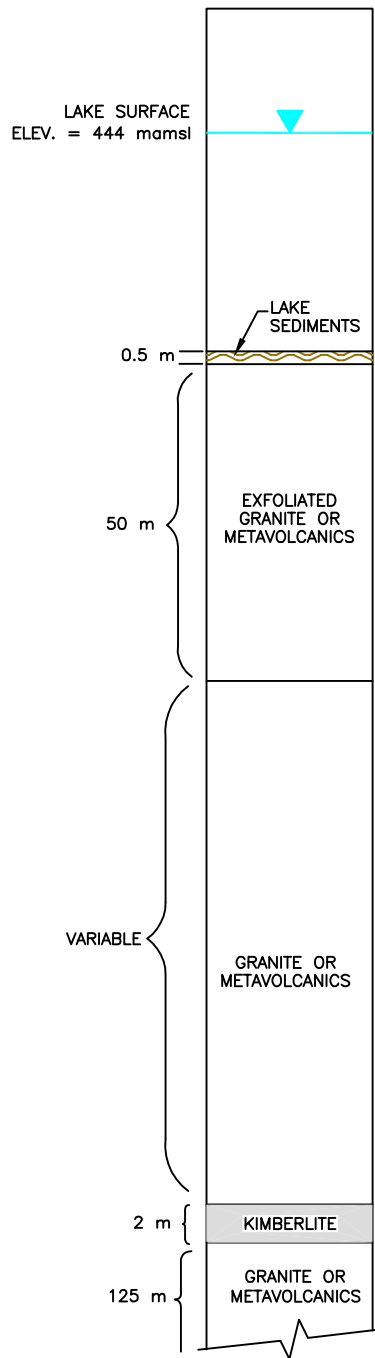
Golder Associates

Year-by-Year Mine Areas
as Simulated in Ground-Water Model

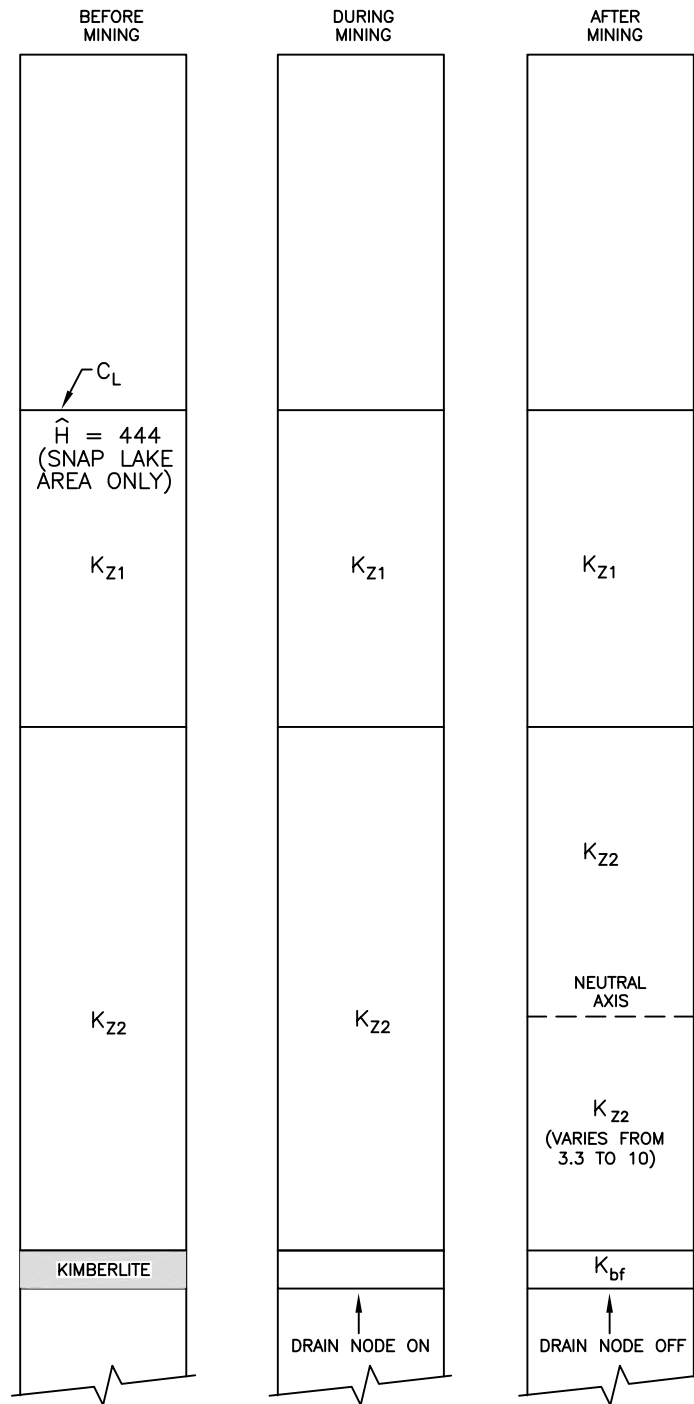
JOB NO.	HCI-1780	DATE:	7/6/01	FIGURE 8
BY:	EAA	DWG FILE:	YR-YR-DEC	
DRAWN:	SAC	PLOT FILE:	YR-YR-DEC	
CHECKED:	RA	PLOT DATE:	12/10/01	

NOTES:

HYDROGEOLOGIC SCHEMATIC SECTION



K PROFILE



JOB NO.	HCI-1780	DATE:	5/2/01
BY:	LCA/AKM	DWG FILE:	SUB-IND-DEC
DRAWN:	SAC	PLOT FILE:	SUB-IND-DEC
CHECKED:	RA	PLOT DATE:	12/17/01



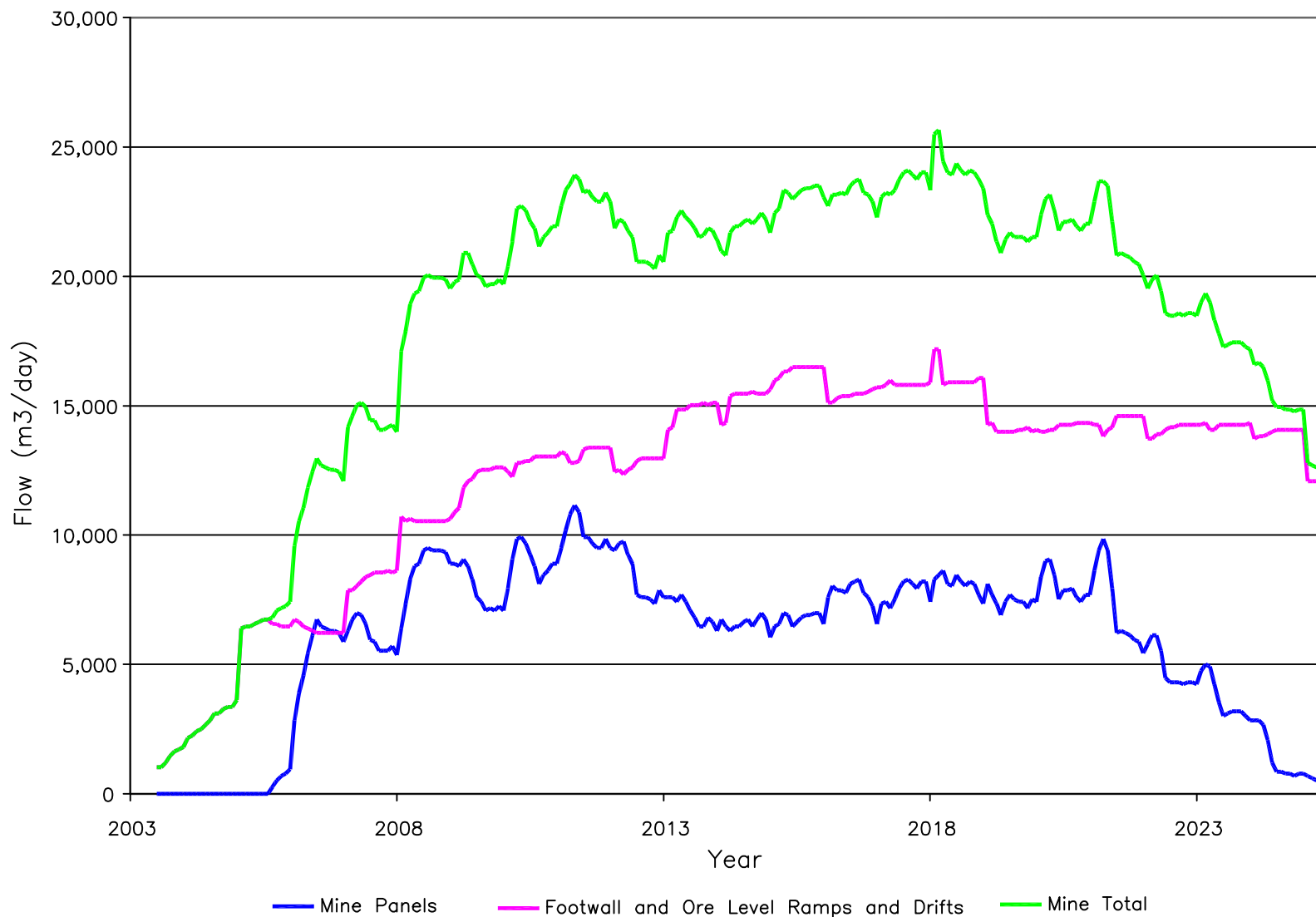
SNAP LAKE PROJECT
DE BEERS
DE BEERS CANADA MINING INC.

Simulation of Subsidence-Induced
Increase in Hydraulic Conductivity

FIGURE

9

NOTES:



Snap Lake Project

DE BEERS

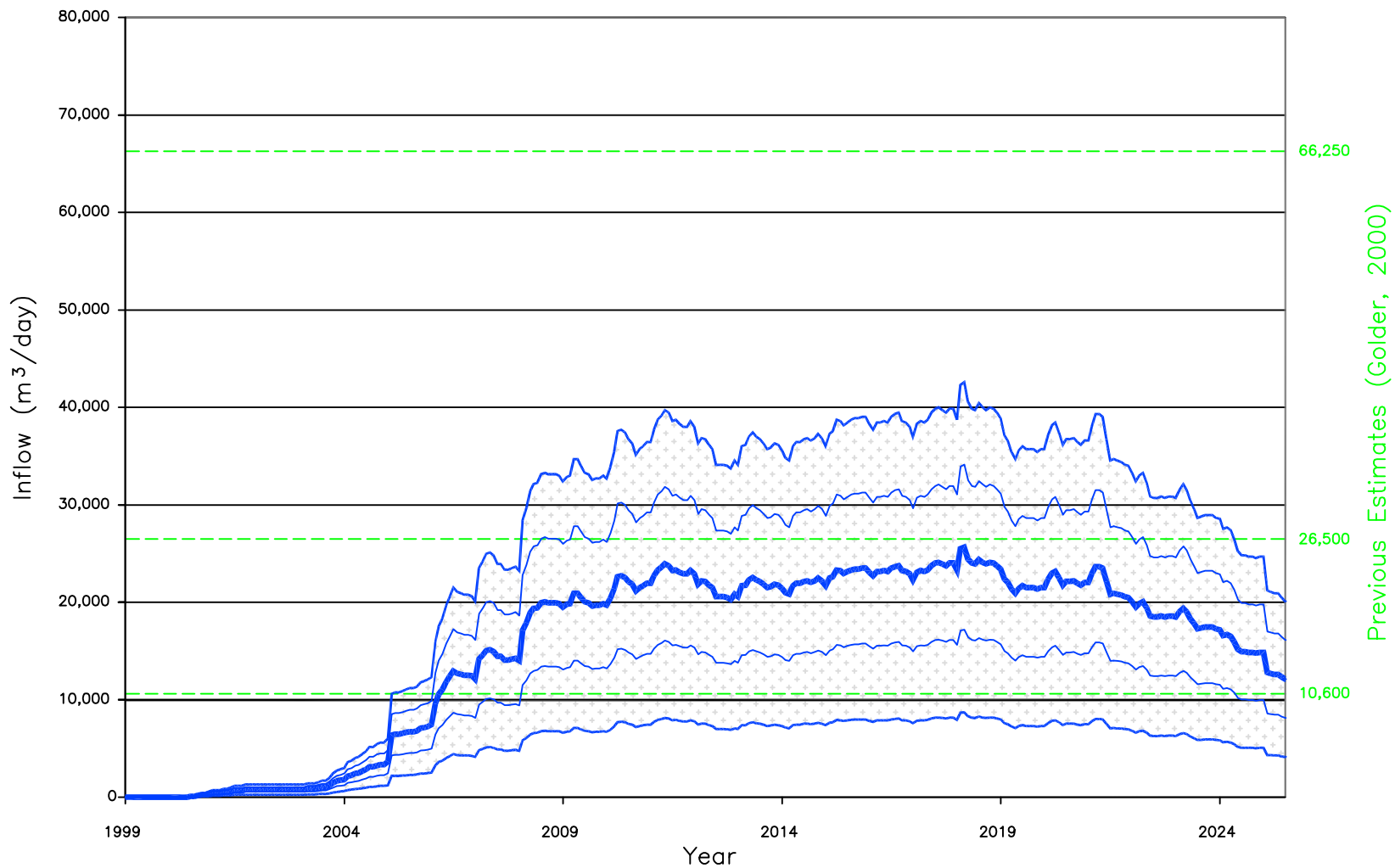
DE BEERS CANADA MINING INC.

JOB NO.	HCI-1780	DATE:	12/4/01
BY:	AKM	DWG FILE:	PREDINFL-DEC
DRAWN:	SAC	PLOT FILE:	PREDINFL-DEC
CHECKED:	RCA	PLOT DATE:	12/7/01

Predicted Inflow to Mine Areas and Drifts

FIGURE
10

NOTES:



Base Case

- +2 S
- +1 S
- Expected
- 1 S
- 2 S

RANGE OF INFLOWS FOR 2 STANDARD DEVIATIONS



Snap Lake Project

DE BEERS

DE BEERS CANADA MINING INC.

JOB NO.	HCI-1780	DATE:	7/19/01
BY:	AKM	DWG FILE:	TOTINF-DEC
DRAWN:	SAC	PLOT FILE:	TOTINF-DEC
CHECKED:	RA	PLOT DATE:	12/17/01

Uncertainty Analysis of Total Inflow

FIGURE
11

NOTES: