
Athabasca Denesuline Comments to the Mackenzie Valley Environmental Impact Review Board on the Proposed Ur Energy Development in the Thelon Basin January 2007



Athabasca Denesuline Negotiations Team
c/o Prince Albert Grand Council
Suite 206, 1004 – 1st Avenue West
Prince Albert, SK S6V 4Y4

Tel: (306) 922-7612

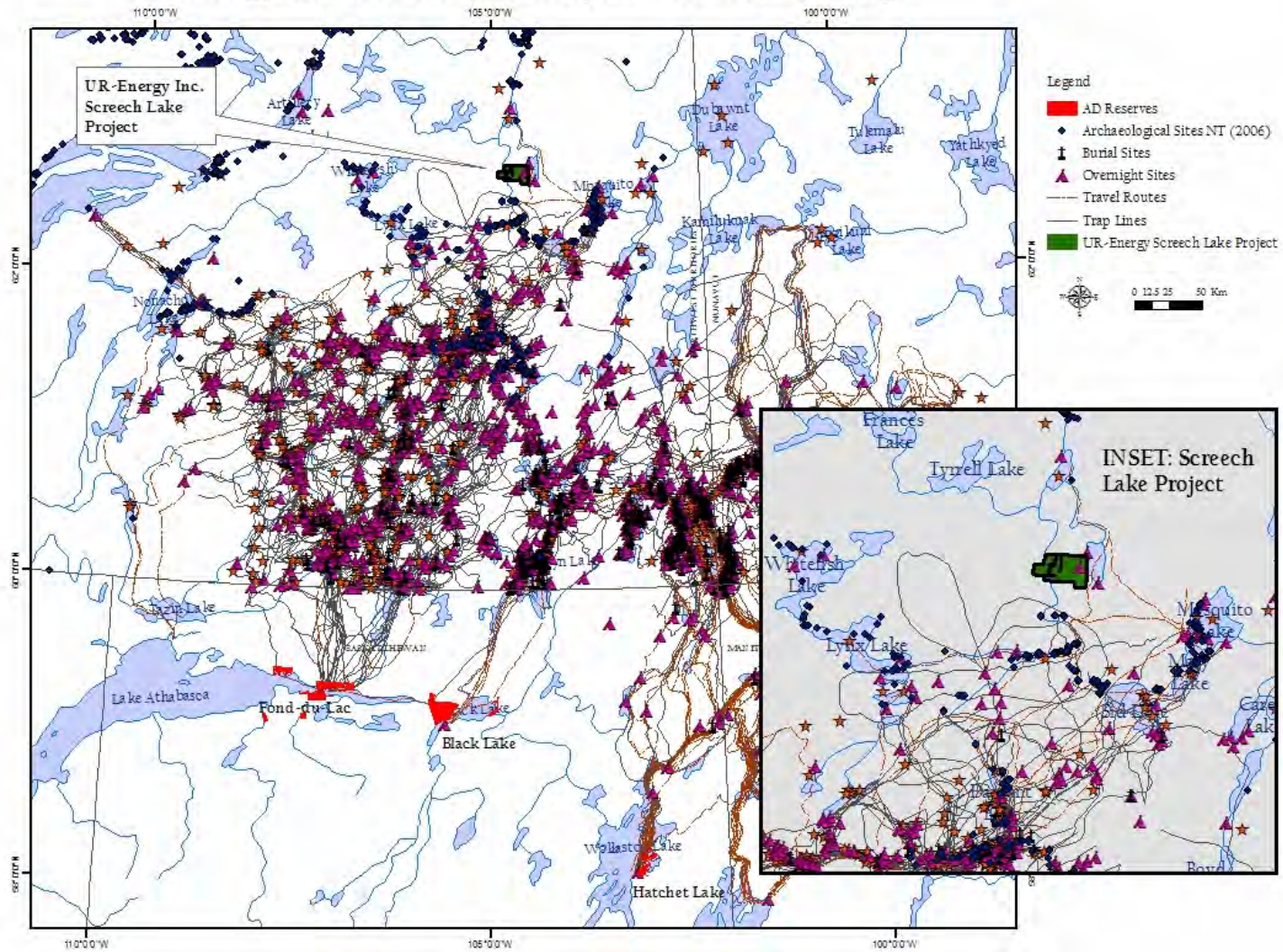
Fax: (306) 763-2973

Athabasca Denesuline Concerns

- ❑ Potential effects on traditional land uses
 - ❑ Potential effects on wildlife and habitats
 - ❑ Disruption of special ecological and cultural places
 - ❑ Lack of socio-economic benefits for the Athabasca Denesuline
 - ❑ Overall concern about developments happening before protection and conservation
 - ❑ Consultation and Procedural considerations
-

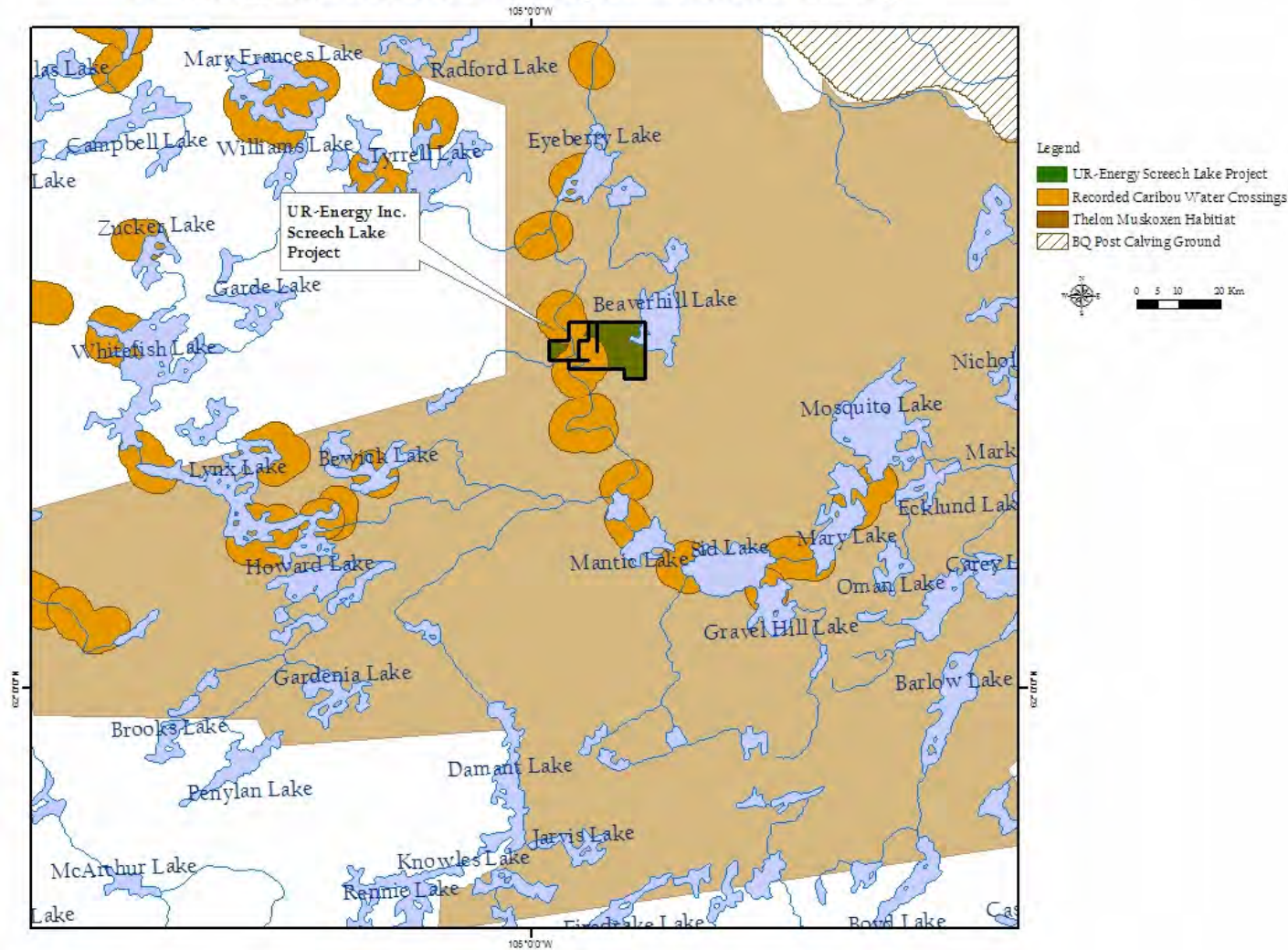
Potential Effects on Traditional Land Uses

UR-Energy Inc. Screech Lake Project - AD TLU Overlap



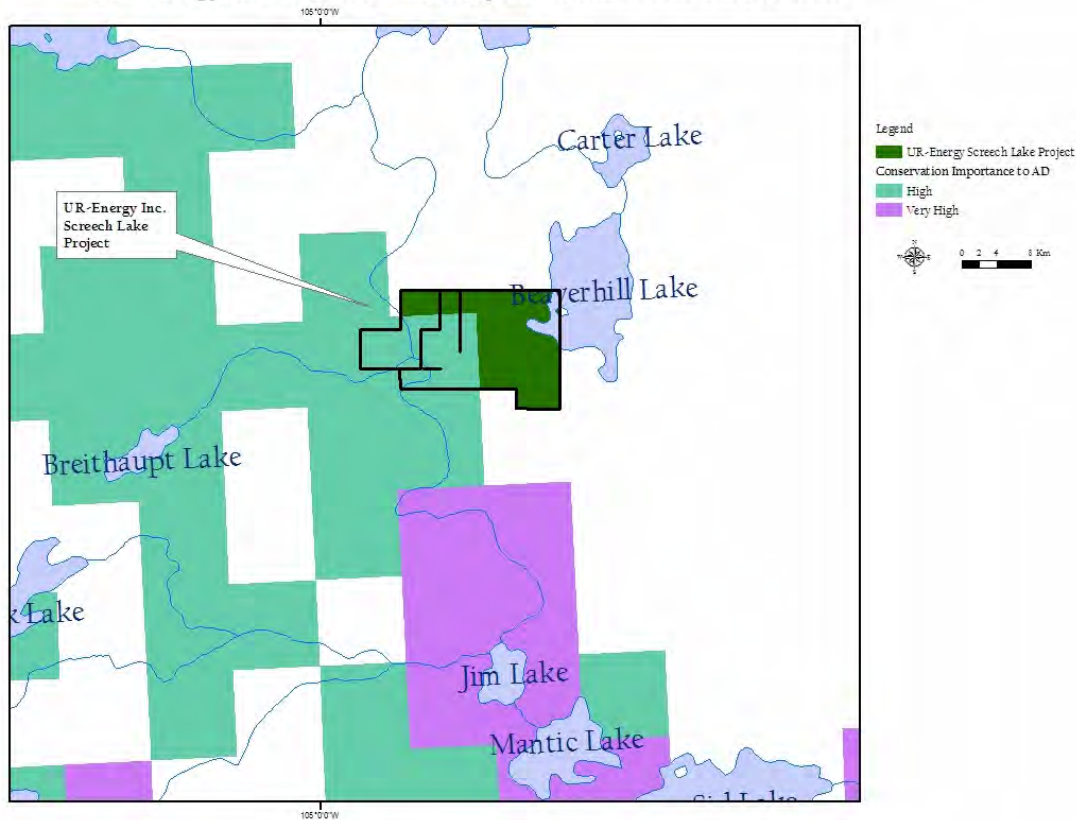
Potential Effects on Wildlife & their Habitats

UR-Energy Inc. Screech Lake Project - Wildlife Overlap



Disruption of special ecological and cultural places

UR-Energy Inc. Screech Lake Project - Conservation Potential



Lack of Defined Benefits for the Athabasca Denesuline

Economic benefits such as employment, royalty sharing, etc. are undefined.

In short, our territory may be disturbed but we receive no benefits.

Overall concern about developments happening before protection measures are in place

Established mineral development frustrates subsequent land use planning and conservation efforts.



Consultation & Procedural Considerations

Crown has not consulted with the Athabasca Denesuline about revenue sharing.

MVEIRB does not hold community hearings in an Athabasca Denesuline communities

Ur Energy has never contacted the Athabasca Denesuline directly during the application or review process.



Summary

The Athabasca Denesuline are concerned about:

- ❑ Potential effects on traditional land uses, wildlife and habitats and important ecological/cultural places;
 - ❑ The lack of socio-economic benefits; and,
 - ❑ Industrial developments preceding the establishment of adequate land use and protection plans
 - ❑ Absence of Crown consultation and limited participation in the MVEIRB process;.
-