



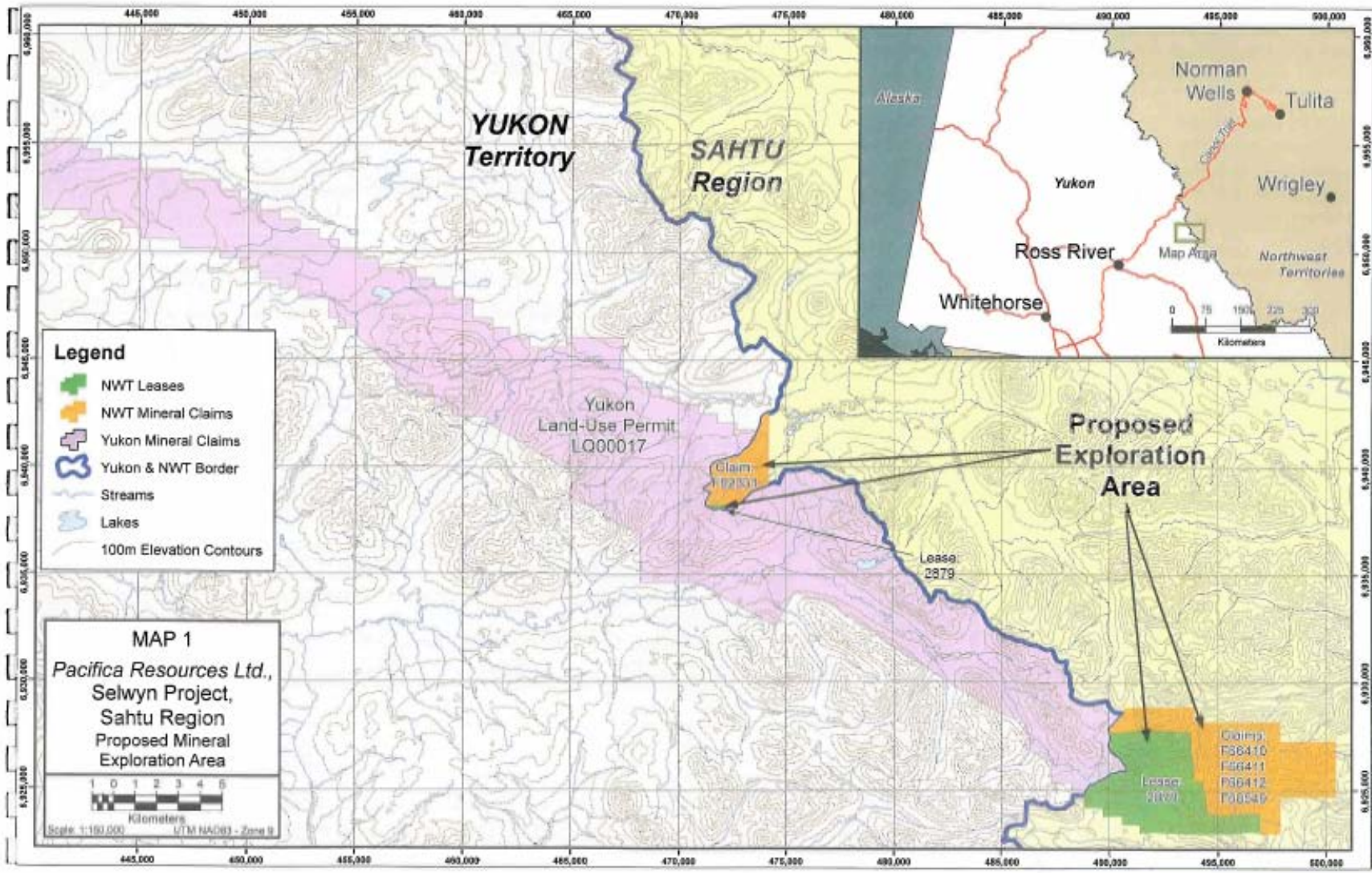
GNWT Presentation

Selwyn Resources Ltd.
Environmental Assessment
Tulita Public Hearing
April 7, 2009

Outline

- Trans-boundary Project
- GNWT concerns and Recommendations
 - Wildlife
 - Waste Management– open burning
 - Archaeology





Trans-boundary

- The trans-boundary nature results in different regulators and, possibly, management approaches, standards, etc.
- There is potential for inconsistency



Wildlife

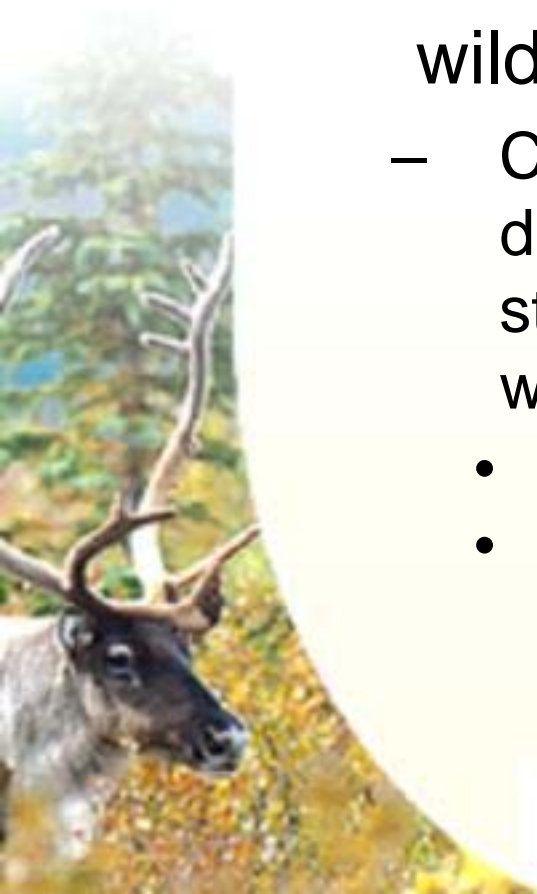
GNWT Wildlife Division has concerns with:

1. Mitigative measures aimed at minimizing the effects of the project on wildlife and wildlife habitat
2. Improvements on infrastructure will increase hunter access to wildlife
3. Disturbance of mountain caribou during critical times (calving, post calving, rut)
4. Reporting of wildlife sightings and activity



Wildlife

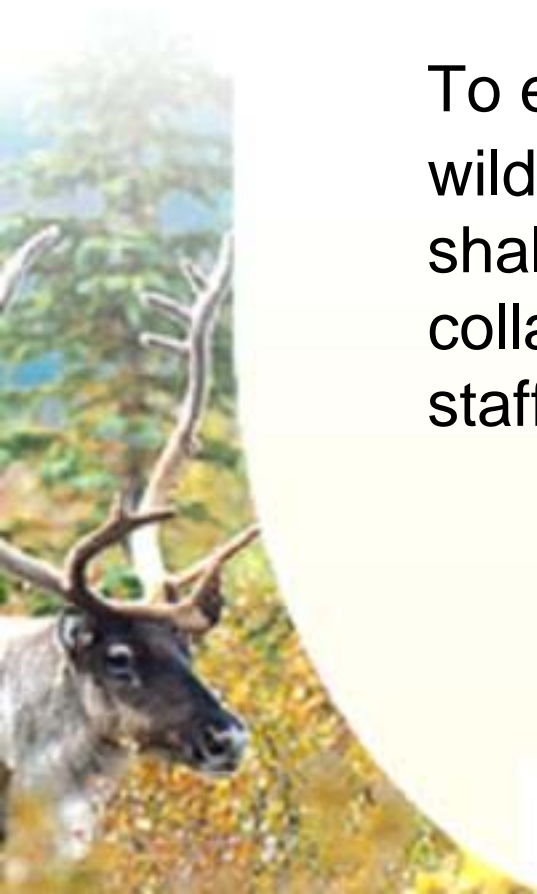
1. Mitigative measures aimed at minimizing the effects of the project on wildlife and wildlife habitat
 - Current documents do not contain enough detail so as to provide guidance for Selwyn staff, or ensure protection for wildlife and wildlife habitat
 - SOPs (July 25, 2008)
 - Wildlife Protection Plan for LUP MV2005F0028



Wildlife

Recommendation:

To ensure consistent plans and policies for wildlife and habitat protection the Proponent shall draft a Wildlife Protection Plan in collaboration with Yukon and NWT Wildlife staff.



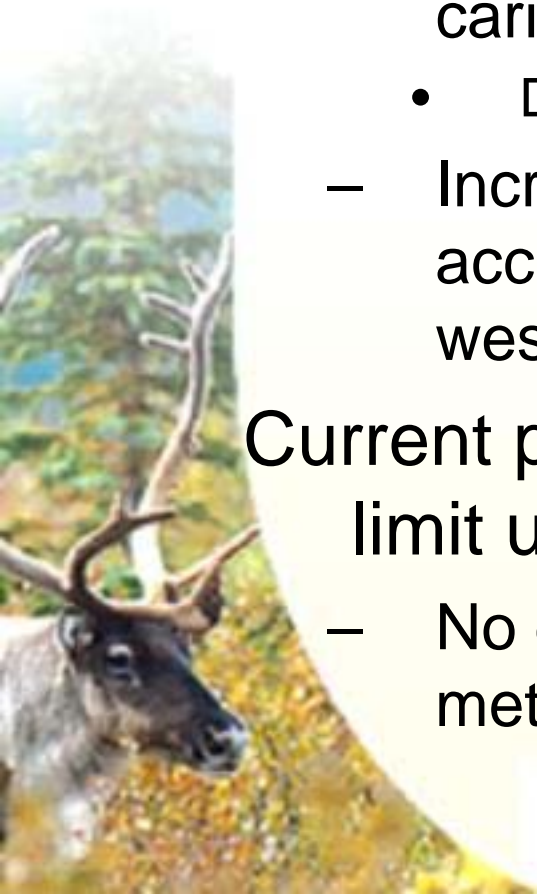
Wildlife

2. Improvements on infrastructure will increase hunter access to wildlife

- Population dynamics and trends for Mountain caribou are not well understood
 - Data indicate some populations may be in decline
- Increased pressure on caribou from hunter access via transportation corridors found on the western side of the Mackenzie Mountains

Current plans indicate Selwyn's willingness to limit use of access roads by hunters

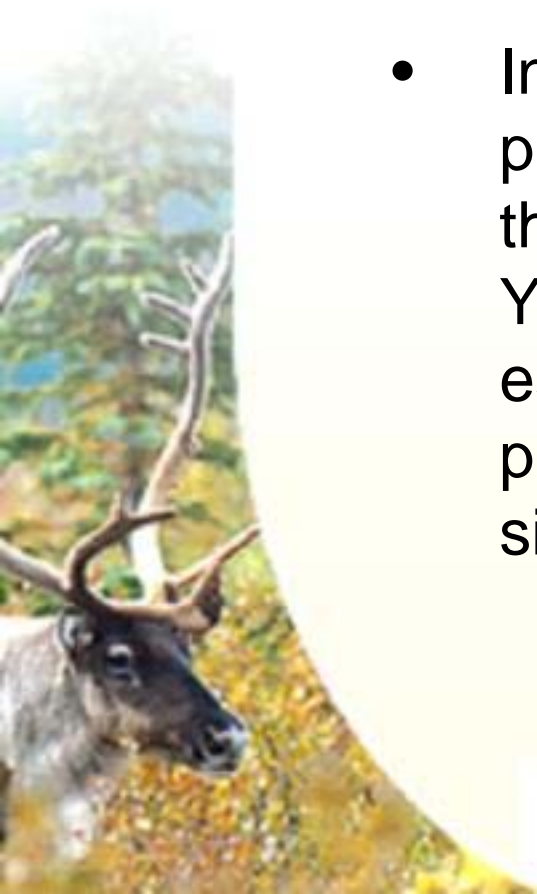
- No details with regards to the effectiveness of methods proposed for limiting access



Wildlife

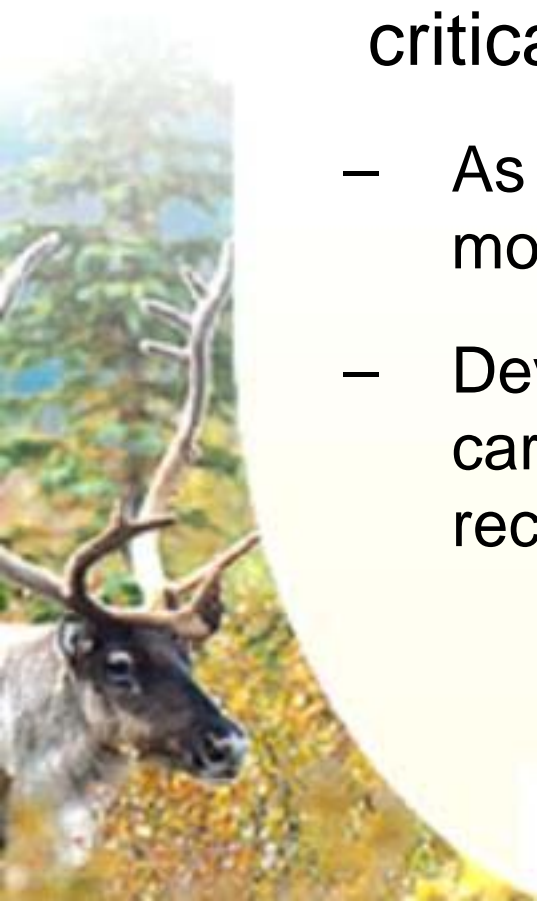
Recommendation:

- In order to decrease the effects of hunting pressure on trans-boundary caribou herds, the Proponent shall commit to working with Yukon and NWT Environmental Staff to establish a way to effectively minimize private use of roads and trails on the Yukon side.



Wildlife

3. Disturbance of Mountain Caribou during critical times (calving, post calving, rut)
 - As previously noted, population levels of mountain caribou are not well understood
 - Development related disturbance can decrease caribou fitness, reproductive potential, and calf recruitment



Wildlife

Recommendations:

- Commitment to cease all development activities when wildlife are within 500m
- Commitment to cease development activities during critical times for mountain caribou



Wildlife

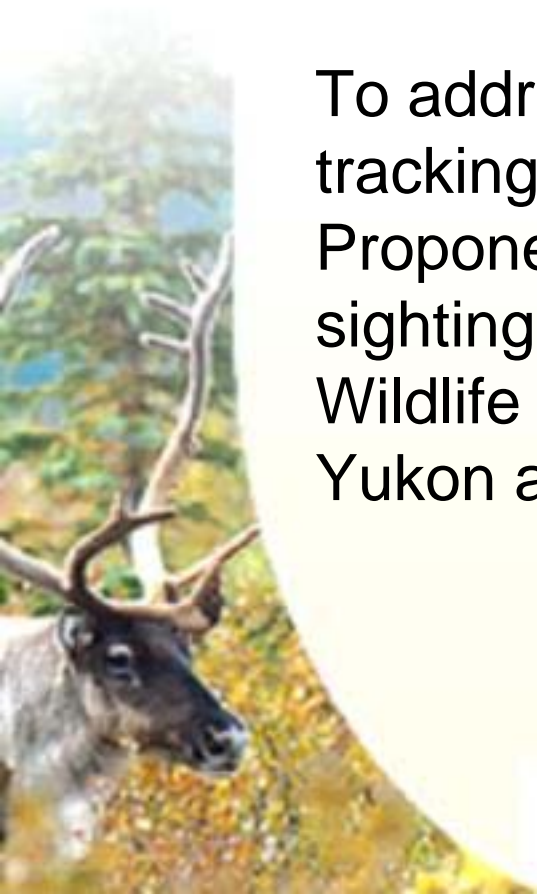
4. Reporting of wildlife sightings and activity
 - Selwyn has committed to keeping a Wildlife Log
 - For the NWT project, the log is available upon request (Wildlife Protection Plan July 2008)



Wildlife

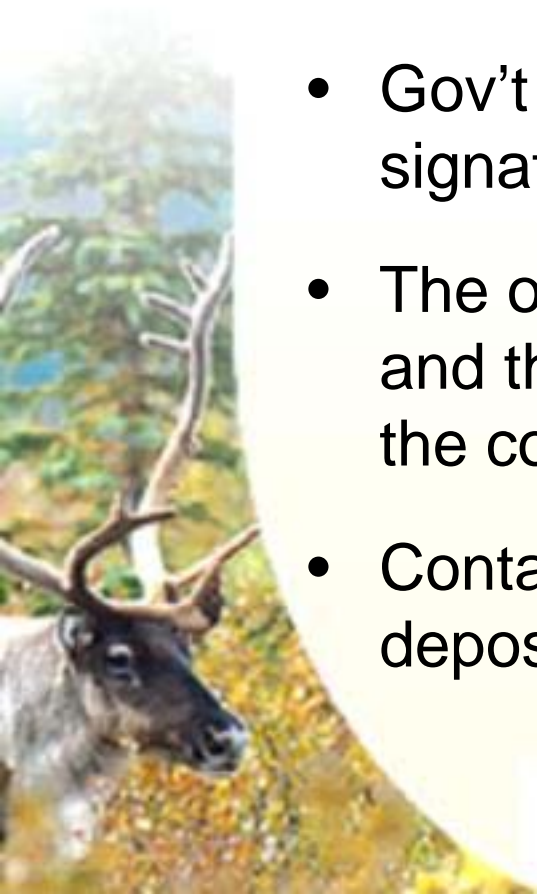
Recommendation:

To address adaptive management, wildlife tracking, and cumulative effects issues, the Proponent shall commit to reporting wildlife sightings, and interaction with development via a Wildlife Log. This log will be made available to Yukon and NWT Wildlife Staff.



Waste Management– Open Burning

- CCME Canada Wide Standards for mercury emissions and for dioxins and furans
- Gov't of Canada, NWT and Yukon are signatories to these CWS
- The open burning of unsegregated solid waste and the resulting emissions is inconsistent with the commitment to meet these standards
- Contaminants → transported through air → deposition to land and water



Waste Management – Open Burning

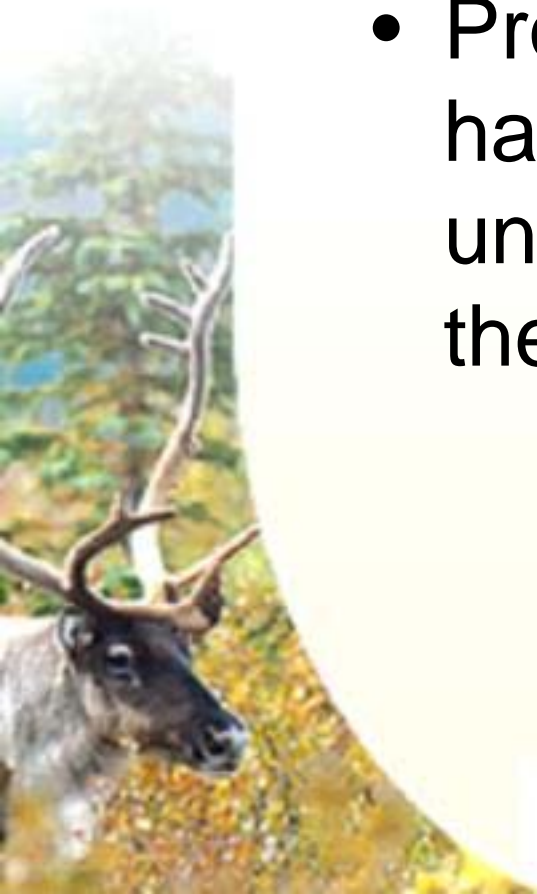
Recommendation:

The Proponent commit to meeting the CWS standards. Waste suitable for open burning are paper products, paperboard packing, and untreated wood wastes.



Archaeology

- Proposed project is not likely to have a significant impact on unrecorded archaeological sites in the Howard's Pass area.



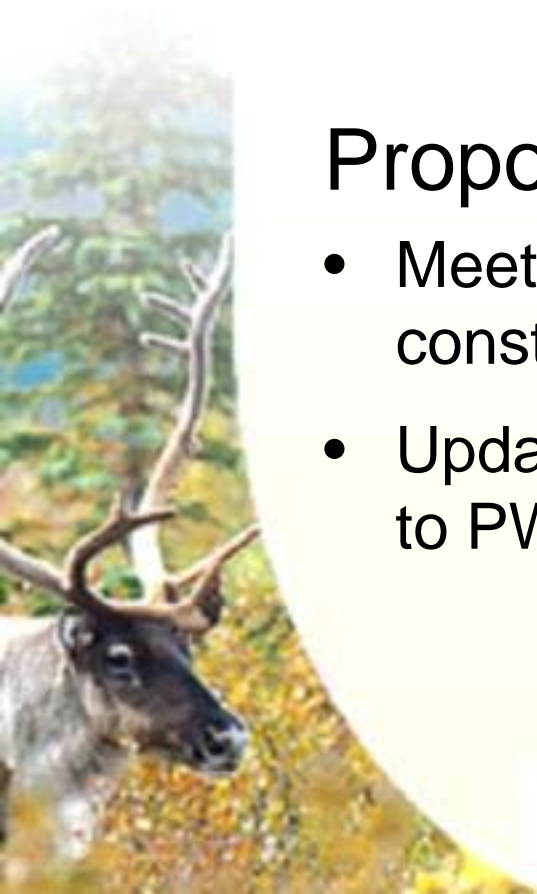
Archaeology

Recommendations:

- No outstanding issues with the Selwyn Project.

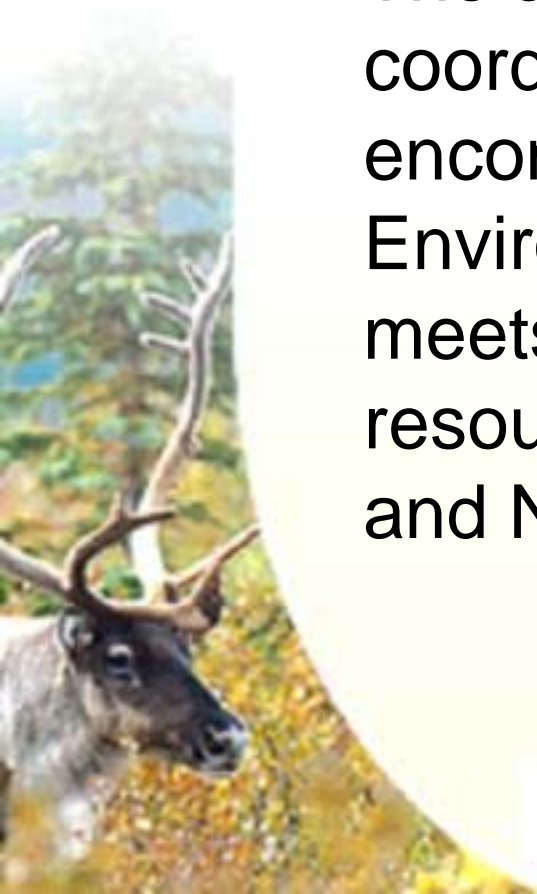
Proponent has agreed to:

- Meet with PWNHC well in advance of project construction if plan to expand activities
- Update SOP on Heritage Preservation and submit to PWNHC for review



Final Recommendation

- The advanced exploration program be coordinated so the Proponent uses an all encompassing mechanism (i.e. Environmental Management Plan) that meets the requirements of regulators and resource management authorities of Yukon and NWT.



Intent of an Environmental Management Plan

- The EMP provides an important communication link between the proponent, their employees, contractors and regulators.
- The regulatory objective is to ensure company compliance with legislation, regulations and approvals and, in doing so, ensures the company is managing the environmental issues.



Final Comments



A wide-angle landscape photograph of a mountain range. The foreground and middle ground consist of rolling hills and ridges covered in low-lying, brownish-green vegetation. Several peaks are covered in patches of snow, particularly on the right side and in the distance. The sky is a clear, bright blue with a few wispy clouds near the horizon. The overall scene is bright and clear, suggesting a sunny day.

Thank you!