

Selwyn EA 0708-001

Parks Canada Agency

Dana Haggarty, Park Ecologist, Nahanni NPR

Lee Montgomery, Northern Negotiations
Advisor, Parks Establishment Branch



Outline

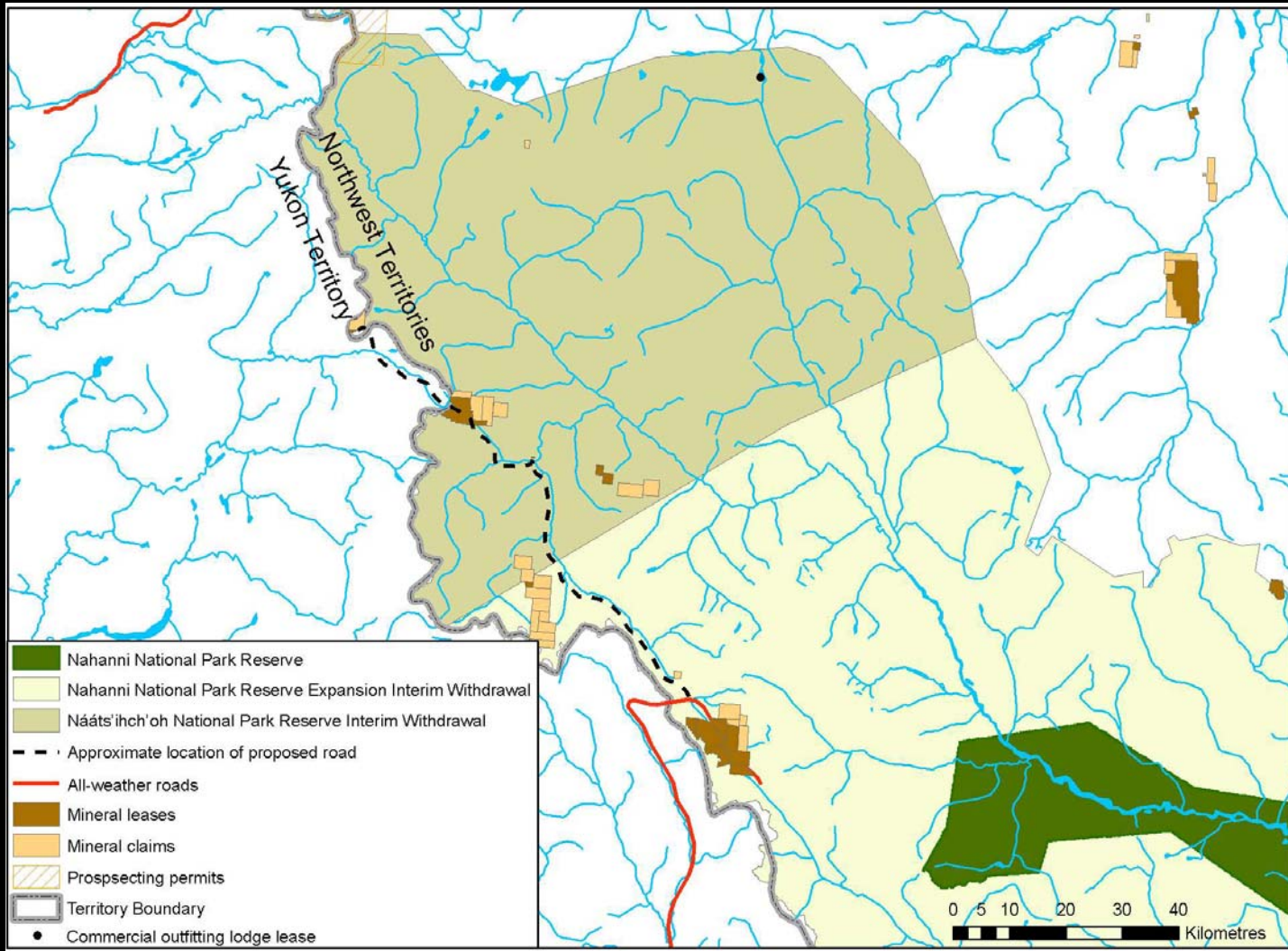
- Parks Canada's interests in the region
- Nááts'ihch'oh
 - Conservation values
 - Chronology of Events
 - Impact Benefit Plan
 - Pre-existing mineral interests
- South Nahanni Caribou herd
- Caribou and over-flight mitigations
- Caribou-project interactions

Parks Canada's Interests in the Sahtu and Dehcho Regions

- Nahanni National Park Reserve
 - Existing
 - Expansion
- Nááts'ihch'oh National Park Reserve Proposal



Nááts'ihch'oh



Nááts'ihch'oh Conservation Values

- Headwaters South Nahanni River
- Grizzly bear habitat
- South Nahanni and Redstone herds of Woodland Caribou
- Dall's sheep range
- Trumpeter swan habitat

Chronology of Events: Nááts'ihch'oh

- June 15, 2007 Parks Canada requested support of Sahtu Dene and Métis for interim land withdrawal
- Tulita Land Corporation, Fort Norman Métis Land Corporation and Norman Wells Land Corporation
- Parks Canada received the support of GNWT
- November 9, 2007 elders proposed name: Nááts'ihch'oh National Park Reserve

Chronology continued ...

- A Mineral and Energy Resources Assessment (MERA) completed November 19, 2007
- January 17th, 2008, Parks Canada and the Land Corporations MOU for Impact and Benefit Plan
- Order in Council, February 26, 2008, withdrew lands until March 31, 2012
- Parks Canada and the Land Corporations continue work on Impact and Benefit Plan
- Likely conclusion 2009/10

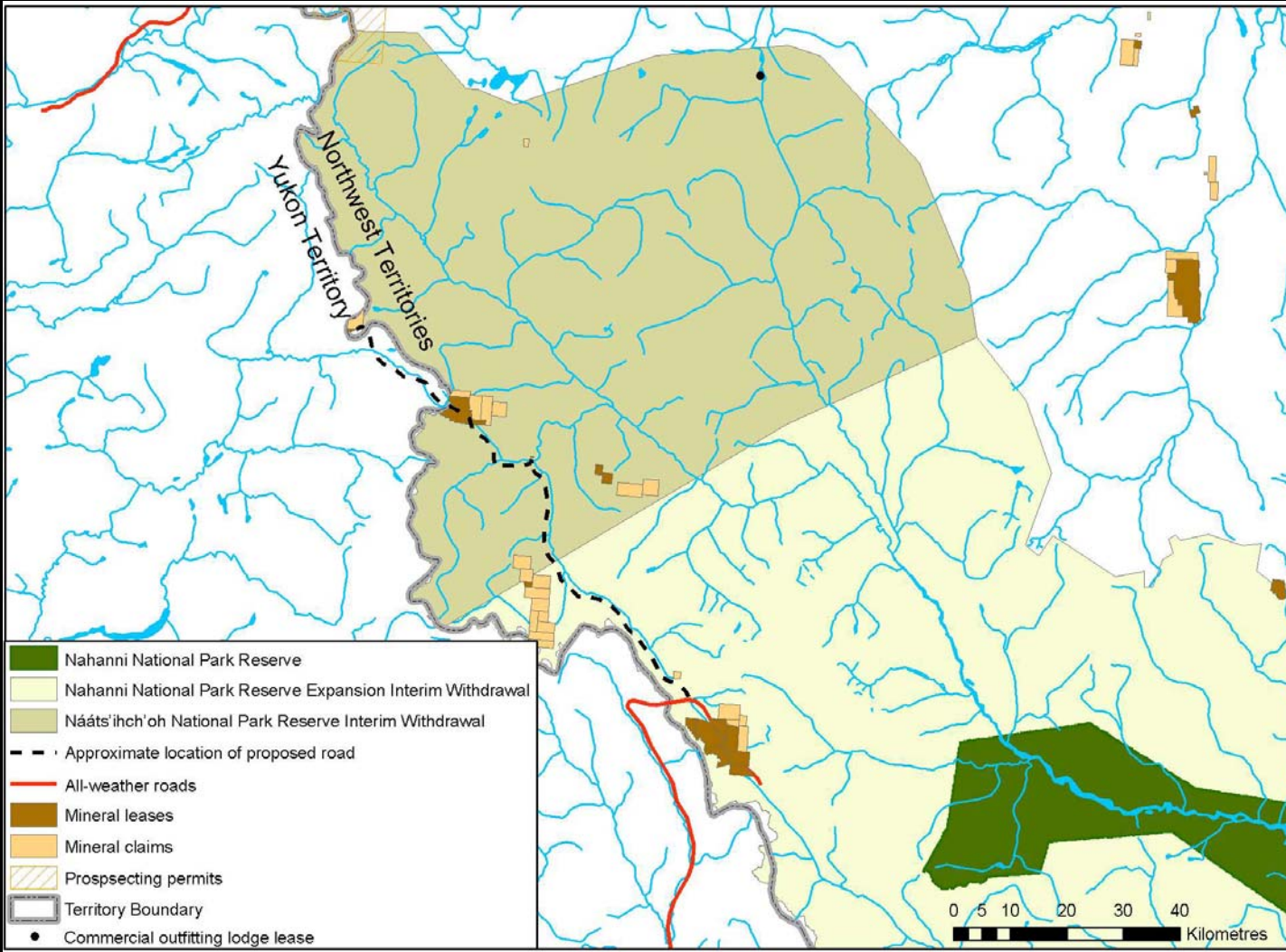
Impact and Benefit Plan

- Prescribed by the Sahtu Dene and Métis Comprehensive Land Claim Agreement
- The Plan will include:
 - Cooperative management committee
 - Continuation of harvesting rights
 - Economic and employment opportunities
- Bimonthly Negotiations

Pre-existing Mineral Interests

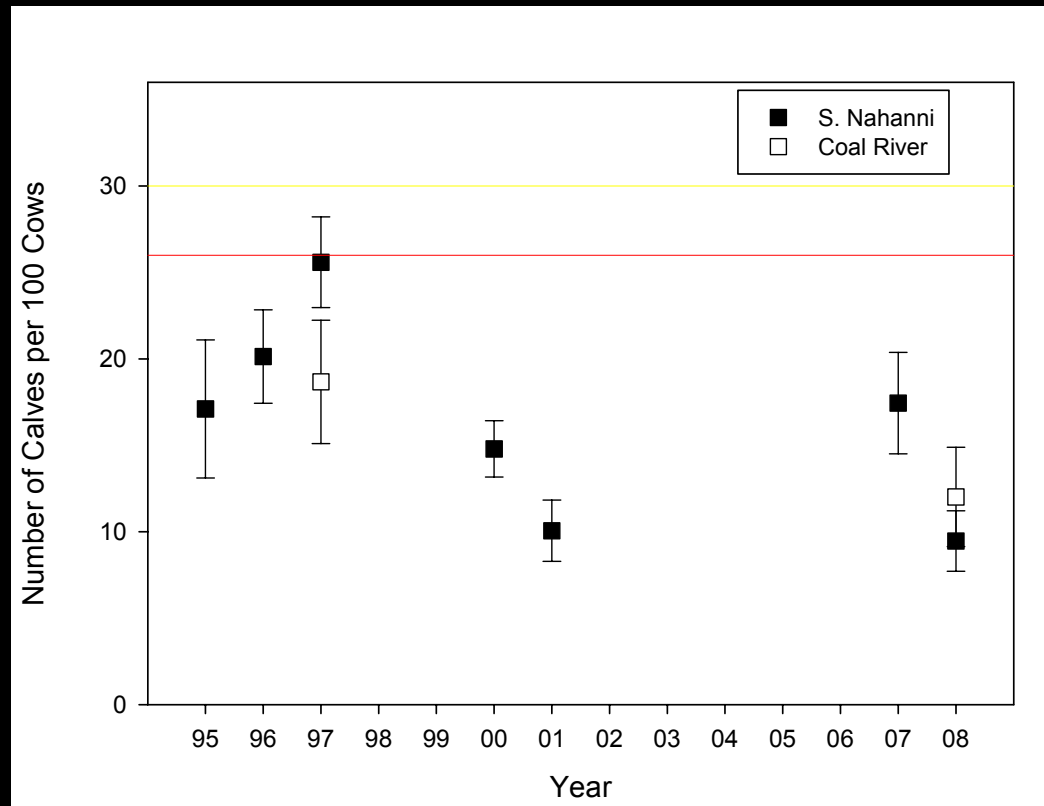
- The Canada National Parks Act does not allow for mineral exploration or mining within a national park or national park reserve.
- Options:
 - Boundary drawn to exclude
 - Willing buyer/willing seller

South Nahanni Caribou



South Nahanni Caribou

- The calf to cow ratio indicates that there has been insufficient recruitment to maintain a stable population; therefore, the S. Nahanni herd is likely in decline¹.
- A decline in caribou populations affects the Ecological Integrity of Nahanni and Nááts'ihch'oh.



¹Nahanni National Park Reserve, State of the Park Report, in preparation.

Caribou - Project interactions

- Caribou cows with calves have been noted to use the development area during post-calving (DAR).
- Post calving is a life history period when woodland caribou are at a high sensitivity to disturbance¹.
- Caribou are most at risk to disturbance from late May to early July when caribou calves are young and vulnerable².
- Post-calving for woodland caribou in the area is in July.

¹Flying in Caribou Country Guidelines, Yukon Environment, 2008

²Webster, L. 1997. The effects of human related harassment on caribou (*Rangifer tarandus*). BC Ministry of Environment, Williams Lake, BC

Flying in Caribou Country Guidelines

- “Herds that are in decline or in the process of recovering from past declines may require special attention to ensure their long-term persistence.”
- “Areas where caribou have been seen in the past should be avoided.”
- “Maintain over-flight altitudes to greater than 600m during sensitive times of year.”
- “Avoid flights or alter flight path to avoid important areas especially during sensitive periods.”

Specific application of the guidelines to this project

Selwyn provided clarification on how they would apply the “Flying in Caribou Country Guidelines” to this project.

Parks Canada is satisfied this will provide adequate mitigation.