

Decline and Recovery of the Bathurst Caribou Herd:

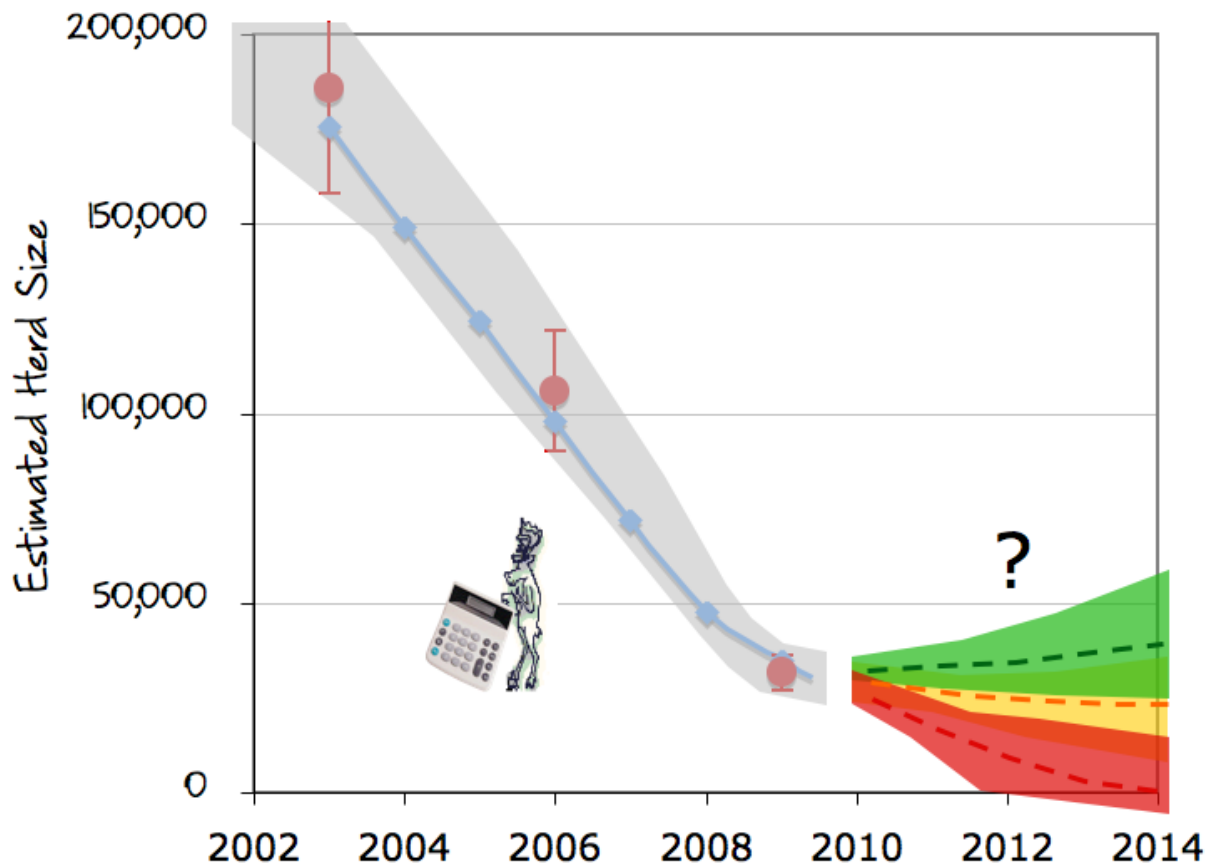
Workshops Oct. 1 & 2 and 5 & 6 in Yellowknife

Summary Report by Lorien Nesbitt and Jan Adamczewski, November 12, 2009

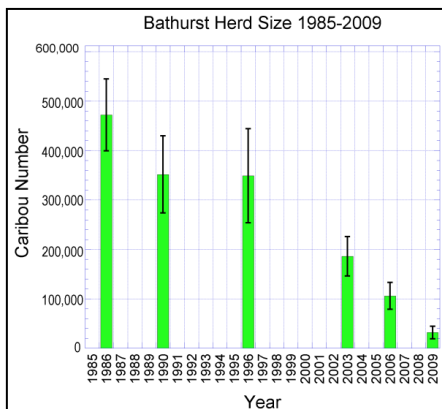
Drawings and Cartoons by Doug Urquhart

Workshop photos by Archana Bali

Other photos by GNWT staff

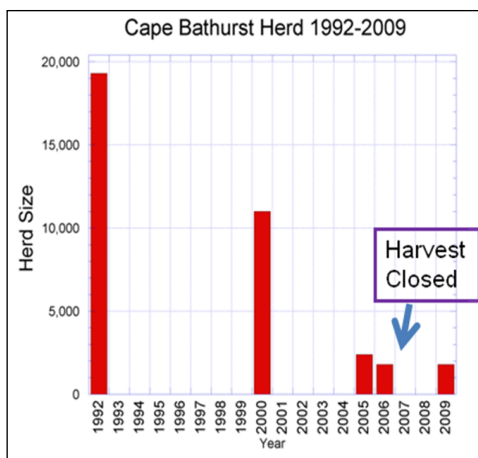
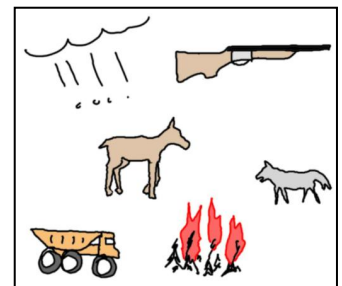


1.0 EXECUTIVE SUMMARY:



The Bathurst caribou herd declined rapidly in the last 3 years from more than 100,000 in 2006 to an estimated 31,900 in June 2009. The herd is important to many hunters and communities across the Northwest Territories (NWT), and its annual range covers nearly 350,000 km² in the NWT, Nunavut and northern Saskatchewan. As part of a process of developing co-management plans for recovery of the Bathurst caribou herd, GNWT Environment and Natural Resources (ENR) organized two 2-day workshops in Yellowknife on Oct. 1 & 2 and 5 & 6, 2009. The purpose of the workshops was to review information about the herd's decline and explore management actions to promote the herd's recovery. Participants represented communities and organizations that value this herd or are involved in managing it. This report includes much of the material presented at the workshops, along with summaries of key comments from participants.

Barren-ground caribou have traditionally gone through wide swings in numbers (cycles), based on Traditional Knowledge and technical studies across their North American range. All herds monitored by GNWT reached peak numbers in the 1980's and 1990's and declined in the 2000's, some to very low numbers. Many factors – fire on the winter range, disease, timing of spring, predators, hunter harvest, industrial development – likely affect each herd, but every herd experiences individual conditions. Workshop participants reviewed the material presented and commented on the likely importance of these factors to the Bathurst herd.



Declines in 2 NWT herds (Cape Bathurst & Bluenose West) show a pattern of decline similar to that of the Bathurst herd: slow decline followed by faster decline at lower numbers. Although the Cape Bathurst and Bluenose West herds would likely have declined between 2000 and 2006 for natural reasons, a hunter harvest that stayed at about the same number as the herd declined had an increasingly large effect at lower herd size. By recommendation of co-management boards, all harvest on the Cape Bathurst herd was closed in 2007 and harvest of Bluenose West caribou was reduced and shifted largely to bulls. The result is that both herds showed initial stability from 2006 to 2009, based on July 2009 surveys.

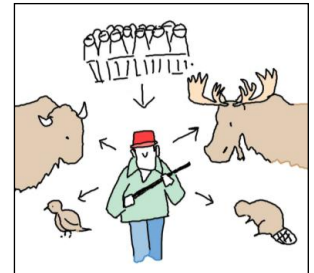
The Bathurst herd declined gradually in the 1990's when it still numbered over 300,000. However, its rate of decline accelerated to 22-23% per year from 2006 to 2009. The Bathurst herd would likely have declined in the early 2000's for natural reasons, in part due to low calf survival. When the herd was much larger in the 1990's, the estimated annual harvest was likely a small percentage of the herd (3-5%). However, as the herd grew smaller, the harvest likely did not decrease, aided by easy access on winter roads and many skidoos and trucks.





A harvest of 5000-7000 caribou/year, mostly cows, would by 2009 result in an annual harvest rate of 15-22% of the herd. The Bathurst Caribou Calculator, a population model, indicates that if the herd continues to decline at its current rate and the harvest continues at the same level, the herd could disappear in 4-5 years. All workshop participants recognized the urgency of taking management actions to allow the herd to recover. The importance of reducing harvest was recognized but action on other factors (e.g. fire on the winter range) was also recommended by participants.

Workshop participants discussed how various communities and groups might cope with hardships resulting from a reduction of the Bathurst hunt. Some communities south of Great Slave Lake have a variety of country food sources such as moose, muskoxen, bison, or fish. Other communities, particularly Lutsel K'e and the off-road Tłı̄chǫ communities, have higher food costs and have few alternatives to caribou, and management will need to address alternatives for these communities.



Many participants stressed the need for further meetings in all the communities. Formally, management actions for the Bathurst herd are likely to be recommended by the Wek'èezhii Renewable Resources Board in early 2010. Everyone will have opportunities to help the Bathurst herd recover its numbers.



2.0 TABLE OF CONTENTS

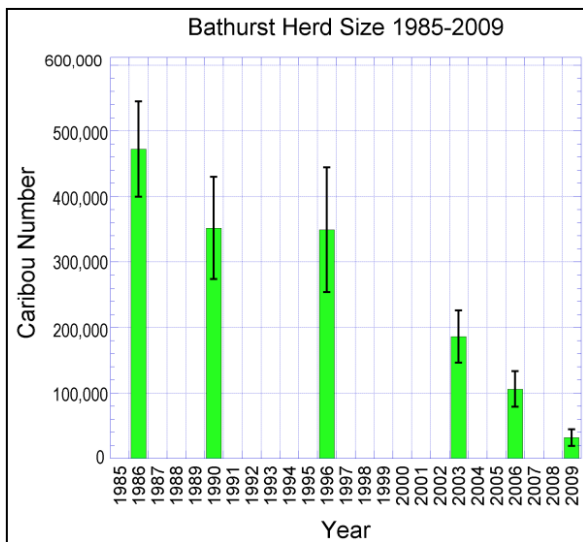
Title page	1
1.0 Executive Summary	2
2.0 Table of Contents	4
3.0 Introduction	5
3.1 Seasonal Ranges and Communities of the Bathurst Caribou Herd	7
3.2 Goals and Objectives of the Workshops	8
3.3 Early October 2009 Bathurst Caribou Workshops	9
3.4 Bathurst Management Proposal, WRRB Hearings & Consultation	10
4.0 Status of Caribou Herds and Caribou Cycles	11
4.1 Status of NWT/Nunavut Barren-Ground Caribou Herds	11
4.2 Cycles in Caribou Numbers – Traditional Knowledge	12
4.3 Cycles in Caribou Numbers – the George River Herd, Quebec/Labrador	13
4.4 Decline in the Beverly Herd – the Dangers of Reaching Very Low Numbers	14
5.0 Factors Affecting Numbers of Barren-Ground Caribou	15
5.1 Weather, Green-up, and the Plants Caribou Eat	15
5.2 Hunter Harvest	16
5.3 Mining, Industrial Development and Caribou	17
5.4 Wolves and Other Predators	18
5.5 Fire on the Winter Range	19
6.0 Declines and Hunter Harvest in Three NWT Caribou Herds	20
6.1 Decline and Harvest Management in the Cape Bathurst Herd	21
6.2 Decline and Harvest Management in the Bluenose West Herd	22
6.3 Decline and Harvest in the Bathurst Herd	23
7.0 Harvest Management for the Porcupine Caribou Herd	24
7.1 The Porcupine Caribou Calculator and Harvest Management	25
8.0 The Bathurst Caribou Calculator and Harvest Management	26
8.1 Possible Futures for the Bathurst Herd	27
8.2 Managing the Bathurst Harvest	28
8.3 Final Thoughts	29
Appendix 1. Workshop Participants	30
Appendix 2. Overview of June 2009 Bathurst Calving Photo Survey	31
Appendix 3. Radio-Collared Caribou Locations During Fall Hunting Season (Aug.-Sept)	32
Appendix 4. Collared Caribou Winter Locations 2005-2009	33
Appendix 5. Could the Missing Bathurst Caribou Be Somewhere Else?	34



3.0 INTRODUCTION

A story from Danny Beaulieu: A long time ago, when caribou could speak, a bull caribou came down from the tundra. When he reached the tree line he saw a tent. The caribou was curious so he approached the tent. As he drew near, he could hear a woman crying inside. The caribou wanted to know what was wrong, so he changed himself into a man and entered the tent. He asked the woman why she was crying. The woman said that her whole tribe had died and all that was left was she and the children; they were all alone. The caribou said that he would stay and live with her and help her build up her people and teach them how to live. But there were two conditions, that nobody could hunt with him and that some day he would have to leave. So the caribou stayed with her and over time her people became strong again and learned how to hunt. Then the day came when the caribou told the woman that he had to leave. She accepted what he said and he left in the night. But the woman changed her mind and decided to follow him to try to bring him back. She followed his tracks down to the ice. When they reached the ice, the tracks changed to hoof prints and went off across the lake.

We are the descendants of the caribou. The caribou once helped our people to recover – now it's our turn to help them.

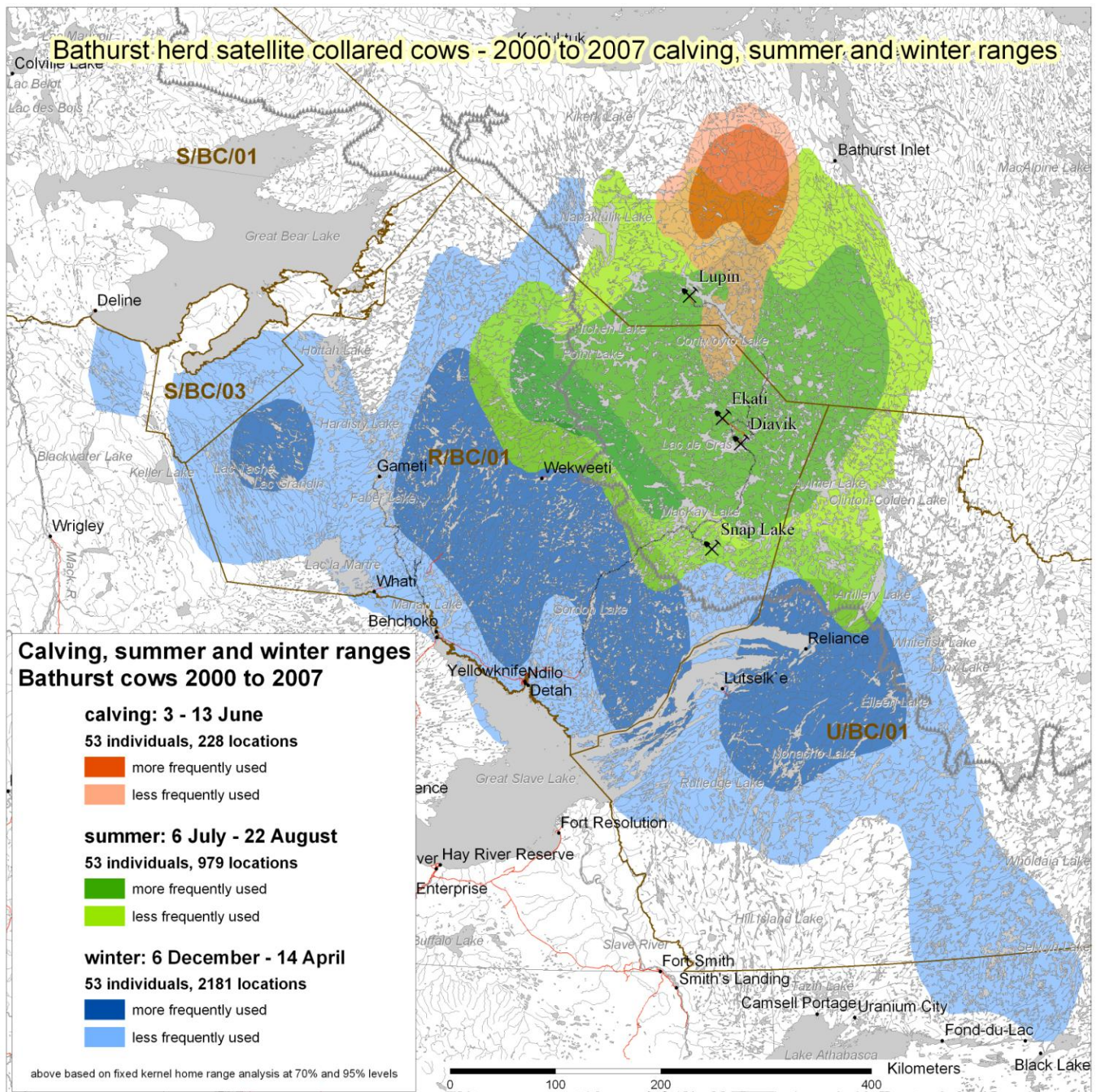


The Bathurst caribou herd has declined rapidly over the past six years to a current population of about 31,900, based on a survey in June 2009 on the calving grounds. Although caribou populations increase and decrease according to natural cycles, the decline since 1996 has accelerated steeply in recent years and suggests that management actions need to be taken swiftly to give the Bathurst caribou herd the best chance to recover its numbers.

The Bathurst herd has economic and cultural importance to many northern communities. Two communities in Nunavut harvest the herd when the herd is nearby during spring migrations or post-calving. Communities in the Tłıchǝ and North Slave region harvest the herd in the fall and particularly in winter when the herd is on its wintering grounds. Aboriginal hunters from the South Slave and Dehcho regions harvest Bathurst caribou during the winter when their wintering grounds are accessible by ice road. The aboriginal harvest is not well documented and varies from year to year.

Since 2006, resident hunters may harvest up to two barren-ground bull caribou each year. Non-resident hunters may harvest up to two bull caribou per year but must use the services of a licensed outfitter. In the Inuvialuit, Gwich'in and Sahtu Settlement Areas, resident and outfitted hunting has been closed in response to declines in other herds.

Because of the low numbers recorded during the 2009 Bathurst survey and the herd's rapid decline, ENR held two workshops over four days, October 1-2 and 5-6, 2009, to review the information on this decline and consider management actions. As the two workshops were similar and were organized to discuss the same issues, they are treated as one workshop in this report. Participants were communities and groups with an interest in the Bathurst caribou herd.



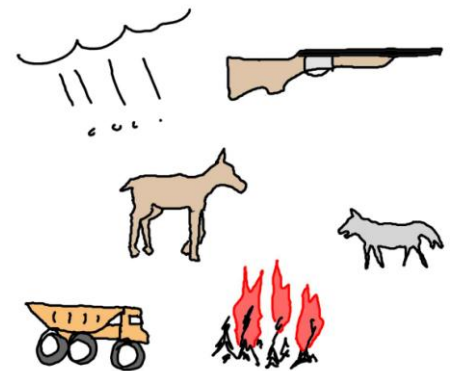
3.1 SEASONAL RANGES AND COMMUNITIES OF THE BATHURST CARIBOU HERD

The combined calving, summer and winter ranges of the Bathurst caribou herd include nearly 350,000 km², based on satellite radio-collar locations from 2000 to 2007 (above). The calving grounds have been southwest of Bathurst Inlet (in Nunavut) since 1996. The summer range is mostly north of tree-line on the tundra, and presently has 3 active diamond mines (Ekati, Diavik and Snap Lake). Most of the hunter harvest is in winter when the herd is accessible by all-weather and winter roads. In some winters Bathurst caribou have ranged into northern Saskatchewan.



3.2 GOALS AND OBJECTIVES OF THE WORKSHOPS

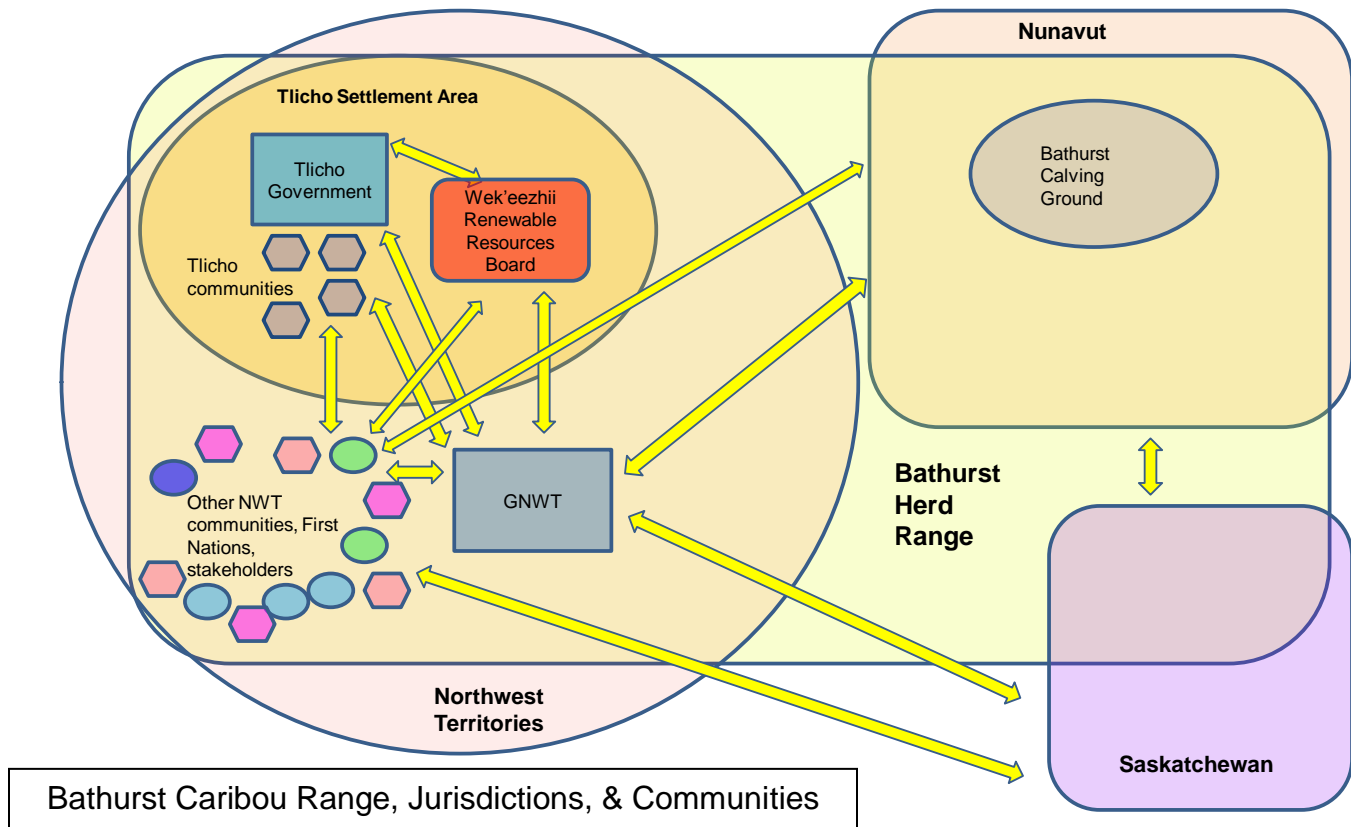
The goals of the workshop were to review the critical decline in the Bathurst herd and to discuss possible management options for recovery. The discussions during the workshop were considered in the development of a joint caribou management proposal by the Government of the Northwest Territories – Environment and Natural Resources (GNWT-ENR) and the Tłıchǵ Government to the Wek'èezhìi Renewable Resources Board (WRRB) in Nov. 2009.



The objectives of the workshop were to:

- i) share information on the status of the Bathurst caribou herd and other herds;
- ii) discuss factors that may be contributing to the decline of the Bathurst herd; and
- iii) consider management options to prevent further declines, including harvest management.

The order of presentations at the workshops varied somewhat between the two workshop sessions; the material has been re-arranged slightly in this report to follow a logical sequence.



3.3 EARLY OCTOBER 2009 BATHURST CARIBOU WORKSHOPS – WHERE DO THEY FIT IN?

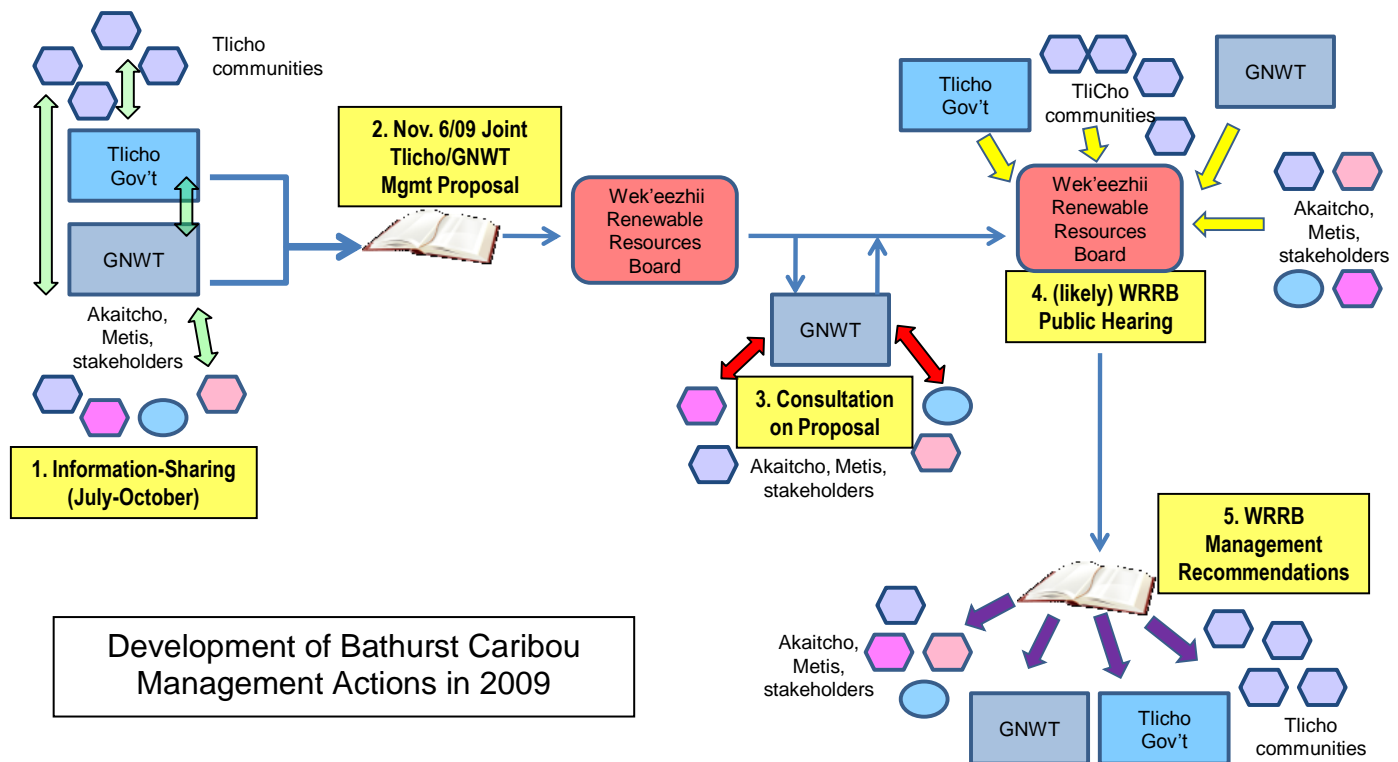
The Bathurst caribou range covers a vast range, with its calving ground and part of its summer range in Nunavut, a large part of its summer, fall and winter range in the NWT, and occasionally a portion of its winter range in Saskatchewan. Management of the herd must take into account all this range and the various jurisdictions within which the range falls.

Within the North Slave region, the Tłıchǫ government implements the Tłıchǫ agreement within the Tłıchǫ Settlement Area. The Wek'èezhii Renewable Resources Board is the co-management board responsible for natural resource management within Wek'èezhii, which is the majority of the settlement area.

The GNWT remains ultimately accountable for wildlife management in the NWT, and is responsible for consulting with the other communities and aboriginal organizations, with and without settled land claims (e.g. Metis Nation, Lutsel K'e, Yellowknives Dene) that hunt the Bathurst caribou herd.

The Bathurst caribou workshops on Oct. 1 & 2 and 5 & 6 were set up primarily to share information among all parties and discuss management options to assist in the recovery of the Bathurst caribou herd. There has been a series of meetings and other workshops in the Tłı̨chǫ and other communities since the June survey of the herd, and these will continue into winter. Representatives from all affected communities were invited to the workshops, as well as representatives from Nunavut and Saskatchewan.

There is also a more formal process to determine management for the herd, as described on the following page.



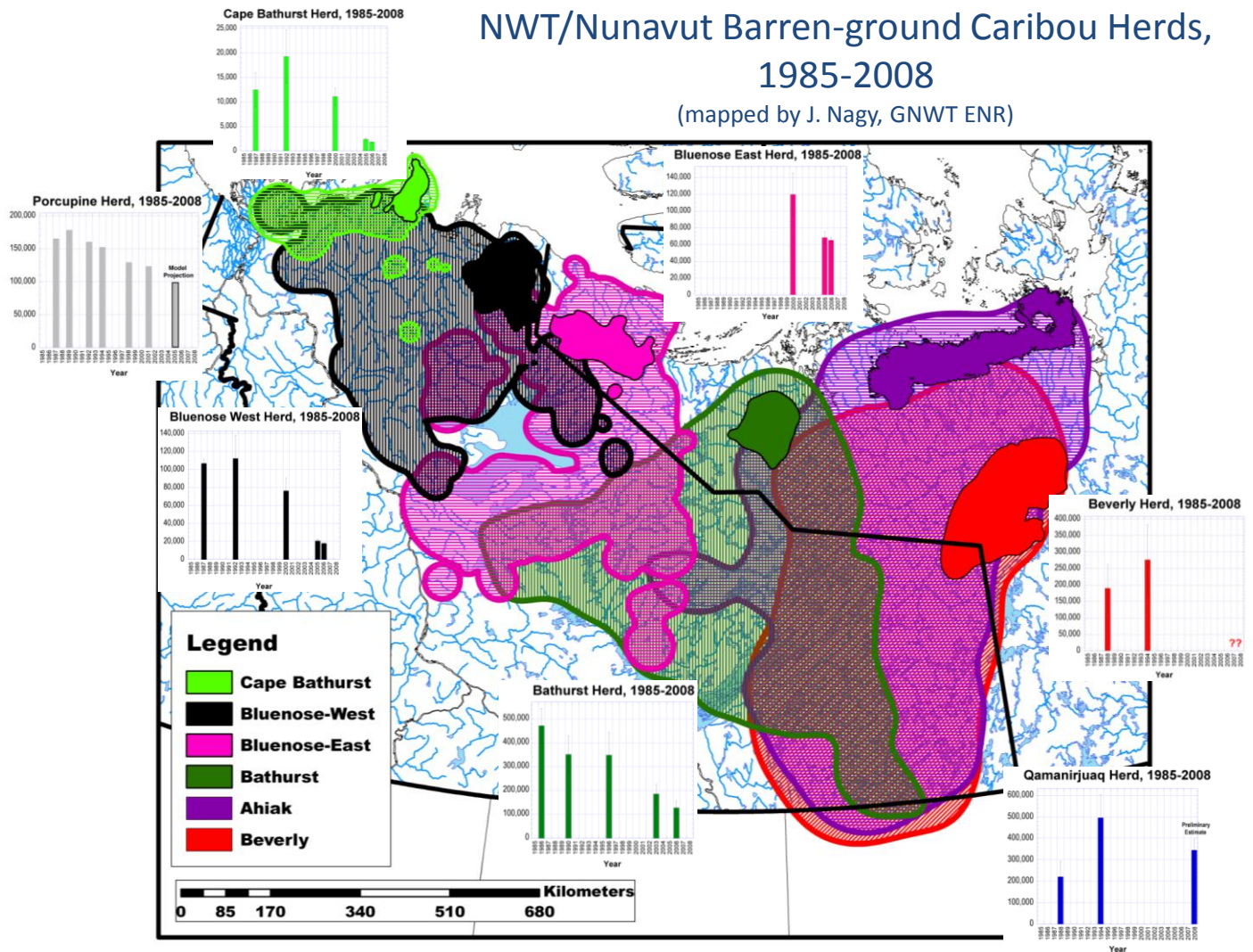
3.4 BATHURST MANAGEMENT PROPOSAL, WRRB HEARINGS & CONSULTATION

The diagram above shows how management actions for the Bathurst herd are being developed in 2009.

1. The workshops described in this report are part of information sharing (meetings, workshops) between all parties in summer and fall (top left corner).
2. The Wek'eezhii Renewable Resources Board (WRRB) has asked the Tłıchǫ government and GNWT to prepare a joint caribou management proposal.
3. GNWT will consult with other communities and stakeholders on the joint proposal in November-December 2009.
4. The WRRB will hold a hearing to obtain public input on the proposal, as required by the TliCho Agreement (top right corner). All organizations and individuals may submit information and make presentations at this hearing.
5. The WRRB will then provide a set of management recommendations to both the Tłıchǫ government and GNWT (bottom right corner). The GNWT and Tłıchǫ government will then consult on the implementation of these recommendations.

NWT/Nunavut Barren-ground Caribou Herds, 1985-2008

(mapped by J. Nagy, GNWT ENR)

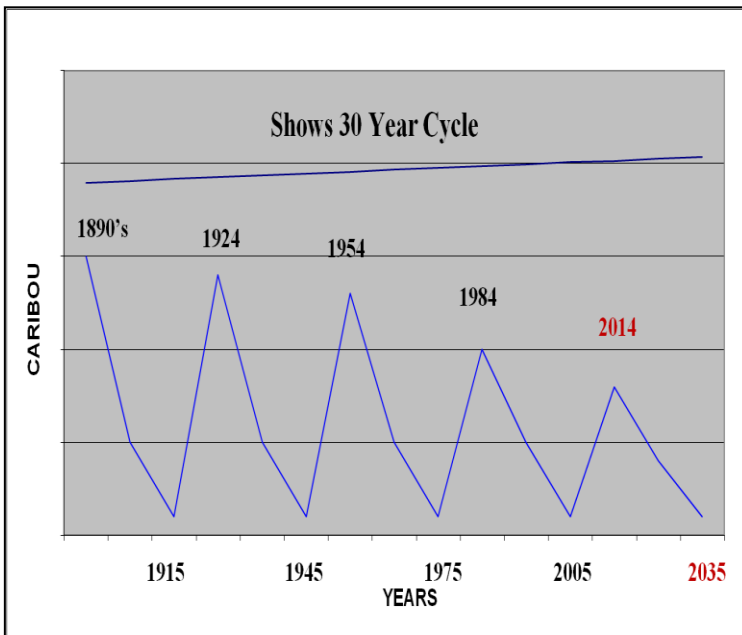


4.0 STATUS OF CARIBOU HERDS AND CARIBOU CYCLES

4.1 STATUS OF NWT/NUNAVUT BARREN-GROUND CARIBOU HERDS

The workshop began with a review of the status of the NWT barren-ground caribou herds. The map above shows the annual ranges of 6 herds in the NWT and Nunavut. These are based on accumulated radio-collar locations for each herd over time. A computer program is used to draw outside boundaries for each herd's range. The calving ground for each herd is the solid shape at the north end of the range. Herds are defined based on the fidelity of radio-collared cows to calving grounds. Collared cows typically return to the same calving ground 96-98% of the time.

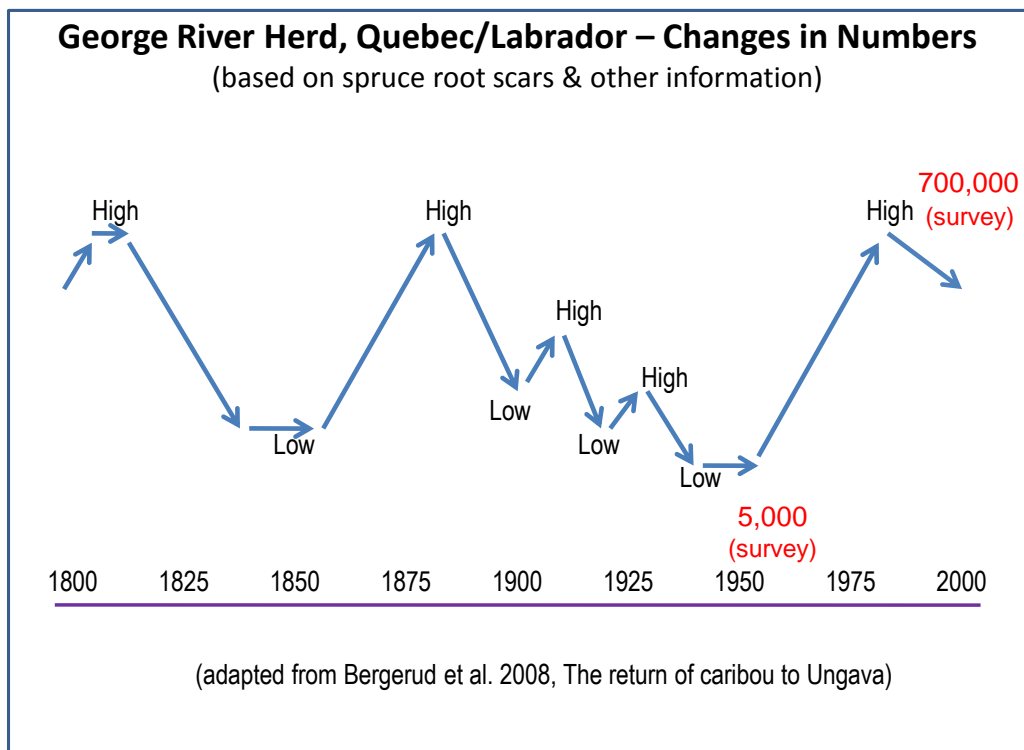
The map also includes population estimates for each herd between 1985 and 2008 and for 2 herds not on this map – the Porcupine range to the west and the Qamanirjuaq herd to the east. All the herds on the map have shown declines in recent years, some more rapidly than others. The greatest decline has happened in the Beverly herd, with extremely low numbers found in 2007, 2008 and 2009, and limited evidence of radio-collared cows shifting to the calving grounds of the Ahlak herd to the north. The few radio-collared Beverly cows appear to now be mixed with the much more numerous Ahlak caribou. A population survey of the Ahlak caribou has not been done but is planned for June 2010 as a joint effort between Nunavut and NWT.



4.2 CYCLES IN CARIBOU NUMBERS – TRADITIONAL KNOWLEDGE (graph & photos D. Beaulieu)

Danny Beaulieu gave a presentation on caribou population cycles during the past 120 years, using traditional knowledge from Chipewyan elders and several generations of his family to recreate times when caribou were abundant and when they were scarce. The Bathurst caribou herd has been increasing and decreasing in size on a cycle of about thirty years. However, it seems that the population peaks reached by the herd are gradually decreasing. Danny discussed the role of new technologies in the decline of the Bathurst herd. He noted that in the past, when the caribou population declined, it was difficult for hunters to find the herd. Hunters walked or traveled by dog-team. Communities used alternative sources of meat and the caribou herd was given time to recover from low numbers. Hunters today use fast snowmobiles, trucks, and airplanes. They have access to the herd along the winter road. Today, hunters can always find the herd because they have the ability to travel long distances in search of caribou. The harvest pressure on the herd has thus increased in recent years and is likely a factor causing the steep decline in the herd. If hunting is not decreased, the next peak may be very low.





4.3 CYCLES IN CARIBOU NUMBERS – THE GEORGE RIVER HERD, QUEBEC/LABRADOR

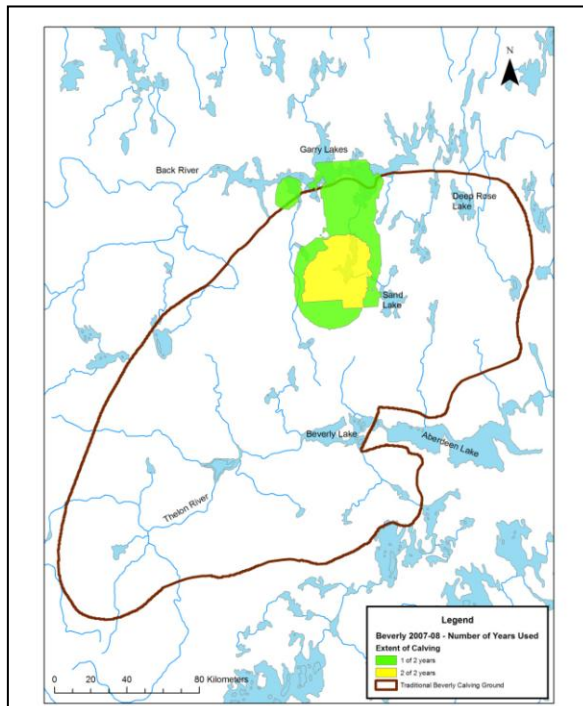
Long-time caribou biologist Tom Bergerud used a variety of methods to re-construct periods of high and low numbers in the George River herd in Quebec/Labrador. Surveys began around 1960 when the herd was estimated at 5,000. The herd then grew to about 700,000 in the early 1990's and has been decreasing since then. Bergerud used various sources of information: knowledge of the Innu and Inuit people of this region, trading post records, and records from river crossings where people hunted caribou. In earlier days there were periods of starvation when hunters could not find caribou.

Biologists in Quebec found that the roots of old spruce trees along caribou migration trails would show scars from caribou hooves on annual tree growth rings. In years when there were many caribou, they found many scars on the spruce roots in that year's ring. Over the period for which there was survey information, they found that spruce root scars tracked the overall herd's numbers. With very old trees, they could then go back to about 1800 and estimate periods of low and high numbers in this caribou herd. This added to the other information from Innu and Inuit people.

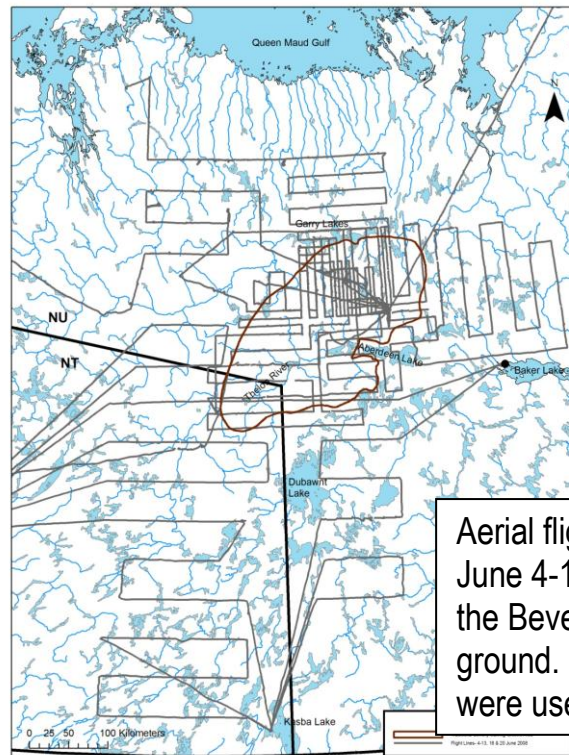
The re-construction of the George River herd's numbers indicates that this herd has gone through large changes in numbers several times over 200 years. Sometimes the herd declined to low numbers, then did not recover for quite a few years. The cycles did not always have the same length, and the peaks were not always as high, and the low points also varied.

Information from Traditional Knowledge, government surveys and other sources all tell us that barren-ground caribou have gone through big changes in numbers for a long time. Conditions for neighbouring herds are not always the same: while the George River herd declined in the 1990's and 2000's, its neighbor the Leaf River herd was increasing.

(Reference: Bergerud, A. T., S. N. Luttich, and L. Camps. The return of caribou to Ungava. McGill-Queen's University Press, Montreal and Kingston, Ontario)



Beverly Traditional Calving Ground (outline) and area used in 2007-2008 (yellow-green)



Aerial flight lines
June 4-18, 2008 over
the Beverly calving
ground. Two aircraft
were used.

4.4 DECLINE IN THE BEVERLY HERD – THE DANGERS OF REACHING VERY LOW NUMBERS

It is worth looking at the decline of the Beverly herd, a herd once estimated at 276,000 in 1994. Our understanding of what happened to this herd is limited because there were no surveys between 1994 and 2002, and there were no radio-collars on this herd until 2006.

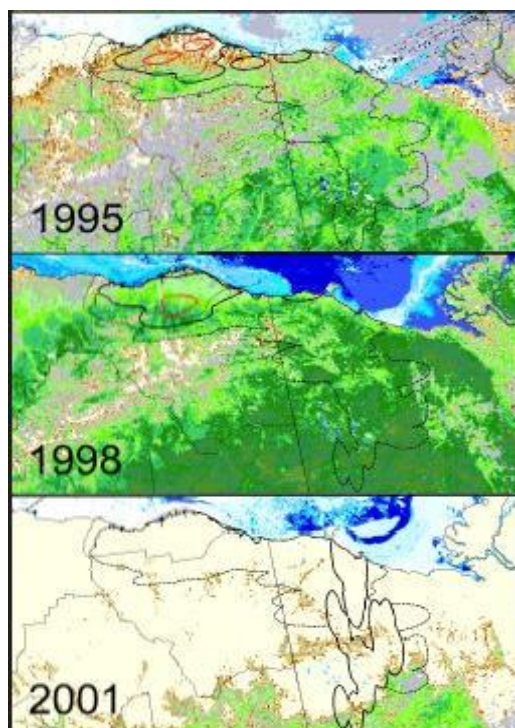
What we can do is look at the numbers of caribou seen during systematic reconnaissance surveys on the calving grounds. These are visual surveys where observers record every caribou they see along flight lines 10 km apart. These surveys are not meant to give a precise population estimate, but because the methods are consistent, they can give an index of caribou numbers on the calving grounds over time.

The last full population survey for the Beverly herd was in June 1994, when the herd was estimated at 276,000. That year about 5,700 caribou (excluding newborn calves) were seen on the systematic reconnaissance survey. Less than half that number were seen 8 years later in 2002. Surveys in 2007, 2008 and 2009 showed that the number of cows using this calving ground was at most 1% of the number in 1994 and indicated a catastrophic decline from 2002 to 2007. In addition, very few calves were seen on the Beverly calving ground, and radio-collared Beverly cows have had exceptionally high mortality rates. There is limited evidence from radio-collared Beverly cows of a shift to the calving grounds of the much larger Ahiak herd to the north. Outside of the calving period, the few remaining Beverly collared cows are now mixed with Ahiak caribou and no longer have their own separate seasonal ranges.

We may never fully know what happened to the Beverly herd, but we should recognize that caribou declines may not always be followed by increases. Unpredictable things can happen if caribou herds reach very low numbers.

5.0 FACTORS AFFECTING NUMBERS OF BARREN-GROUND CARIBOU

We know that barren-ground caribou herds go through cycles or large changes in numbers, but the cycles are complex. Two herds will not always have the same population trend and the same conditions affecting them. As noted earlier, the George River herd declined over the 1990's and 2000's while its neighbour in Labrador, the Leaf River herd, was increasing. Participants at the workshops raised a number of issues that could be contributing to the decline of the Bathurst herd and other caribou herds. This section of the report presents some of the material used at the workshops, and a summary of key points from participants.



**Porcupine Caribou
Calving Grounds
First week of June**

(from Griffith et al. 2002)



5.1 WEATHER, GREEN-UP AND THE PLANTS CARIBOU EAT

The 3 maps above are images of the Porcupine Herd's calving grounds on the Alaskan north slope. Each of them was taken by a satellite in the first week of June when most of the calves in this herd are born. When spring came early, as in 1998, the snow had melted and there was abundant fresh green food for cows nursing calves. The coastal calving ground also has fewer predators than areas to the south. In such years summer calf survival was good. In other years, as in 2001, the preferred coastal calving grounds were still under snow and cows gave birth in the mountains while still on the spring migration. In such years summer calf survival was poor.

This study illustrates one way in which weather can affect caribou: many years with a late spring could result in a decline. Weather can also affect growth and quality of the plants that caribou eat in the summer, hot weather can result in interference in feeding from insects, and fire on the winter range may burn the slow-growing lichens caribou eat in the winter. We can study these patterns but we have little control over the weather.

(Reference: Griffith, B., D. C. Douglas, N. E. Walsh, D. D. Young, T. R. McCabe, D. E. Russell, R. G. White, R. D. Cameron, and K. R. Whitten. 2002. Section 3: the Porcupine Caribou Herd. USGS/BRD 2002-0001 Biological Science Report)

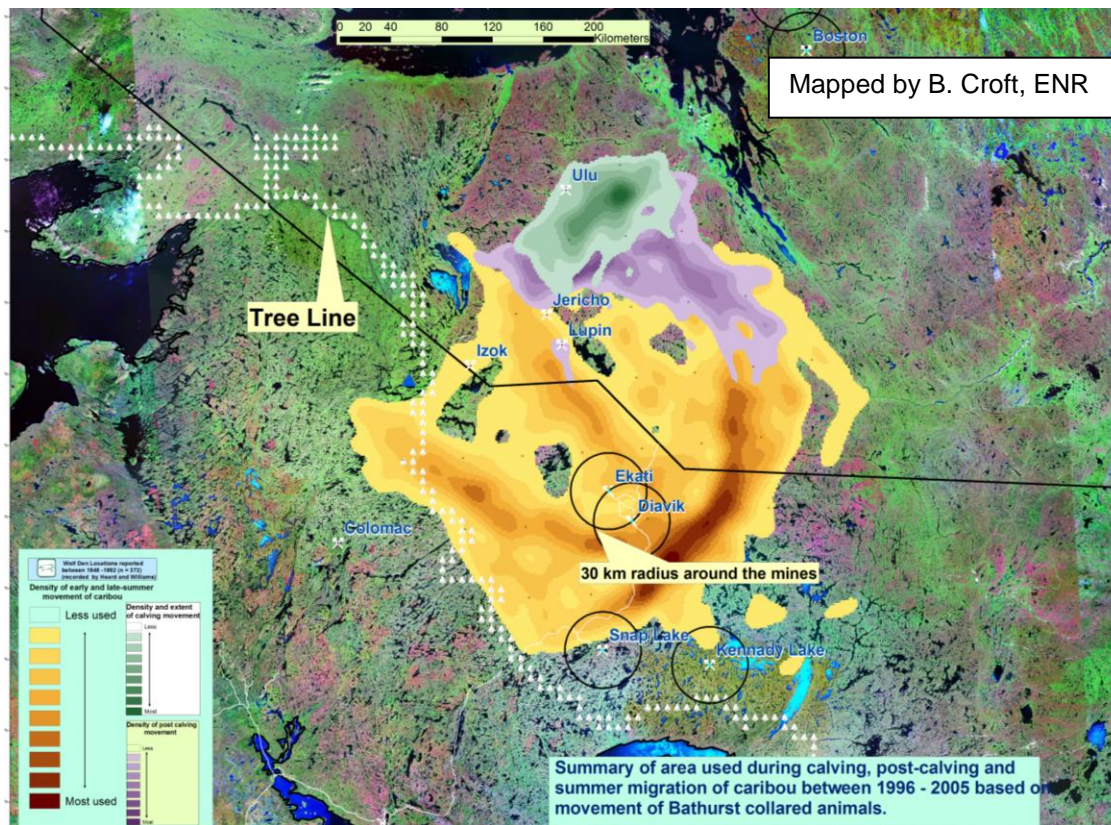


5.2 HUNTER HARVEST (photos above D. Beaulieu)

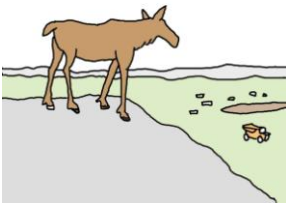


Hunter harvest was discussed more than other factors affecting caribou because human impacts on caribou can be managed, and because the hunter harvest can have major impacts on declining caribou, especially at low numbers. Several people, including Danny Beaulieu, spoke about how different hunting was today compared to earlier times. The table below was compiled at an earlier workshop in May 2009, where several aboriginal leaders, including Walter Bayha and Joe Rabesca, spoke on this subject. Overall, their comments show that hunting today is less respectful of caribou and it has become much easier to hunt caribou, even at very low numbers.

TRADITIONAL HUNTING	CURRENT HUNTING
Done with snowshoes / dog-team / slower snowmobiles with small wooden toboggans	Fast, widetrack snowmobiles with large teflon and fiberglass toboggans. People even hunt from trucks and vans on the winter roads.
Good organization / Community / Social event	Many small groups / often strangers
Open scope. Less accuracy. Fewer animals taken	High powered rifles with scopes – shoot from a distance; shoot many quickly
Taking your time	Done quickly
Part of the lifestyle	Done for sport
Selecting healthy animals from herd	No selection of healthy animals
Leaving most of group / herd alive	Killing all of a group.
Letting the leaders pass	Killing the first animals through
Conservation education built into lifestyle	No awareness of conservation ethic
Selecting sex based on use/need	Killing indiscriminately
Taking only what was needed	Killing more than is needed
Sharing meat	Selling meat. Stories of dumptrucks coming from other communities to take caribou away.
Using all of the animal	Wasting meat
Taking elders along	Not practiced as much now
Asking permission to use the land	People coming from everywhere
Easy to track how many animals taken	Very difficult to track number of animals taken
Leaving the bones / remains to rest on the land	Carcasses at the dump or left on ice roads
Caribou weren't always accessible. Successful harvest depended on their migration route	Hunters access caribou wherever they are – regardless of migration pattern. Airplanes, roads, fast snowmachines, etc.
People lived with / followed caribou population cycles - harvest decreased when numbers were low	Even during low population cycles, harvest stays high because people can always access the animals.



5.3 MINING, INDUSTRIAL DEVELOPMENT AND CARIBOU

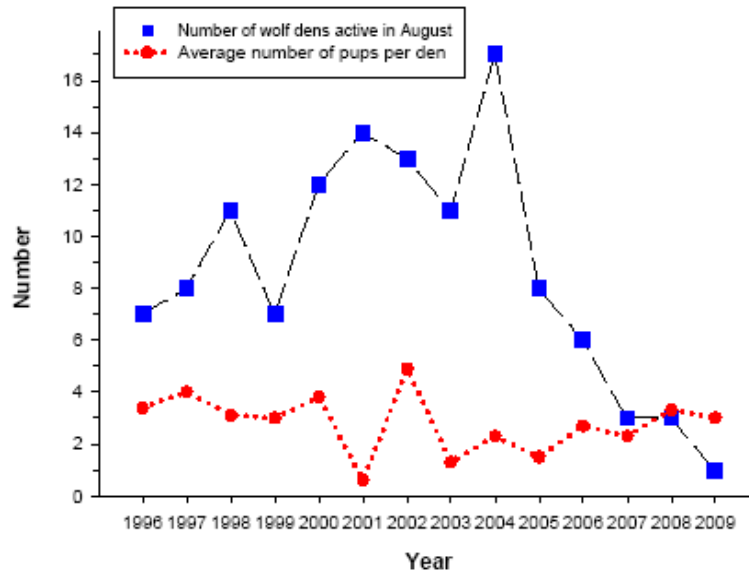


The map above shows the calving (green), post-calving (purple) and summer (yellow) ranges of the Bathurst herd, based on radio-collar caribou locations from 1996 to 2005. Darker areas had greater use by caribou. The Ekati and Diavik diamond mines are in the summer range and the Snap Lake mine is on the edge of the summer range.

Studies of the effects of the diamond mines on Bathurst caribou, based on collars and aerial surveys within 30 km of the mines, have confirmed that there is partial avoidance by caribou to a distance of 15-23 km from each active mine. Dust and noise (e.g. blasting) may account for this reduced use by caribou. However, this only affects about 3-4% of the current summer range. Caribou that come near the mine may also be disturbed by traffic, but numbers of caribou seen near the mine have tended to be low. Overall, these studies suggest that the diamond mines have some effects on caribou, but to date the effects have been limited and are not the main driver in the herd's decline.

Most workshop participants felt that exploration and mining have had negative effects on the Bathurst caribou herd. Several participants expressed their concern about helicopters used during exploration, about the many transport trucks servicing the mine along the ice road, and that blasting at the mine site could cause contamination in the surrounding areas. The ice roads also provide more access in winter for hunters to the Bathurst winter range. Participants agreed that caribou avoid the mines and that further research is needed to understand the effects of mining and exploration on caribou. Several participants spoke about the need to protect calving grounds in NWT and Nunavut. To date there has not been any exploration or development activity on the Bathurst calving ground during calving.

Average pup counts for wolf den sites active in August on the central arctic tundra, Northwest Territories

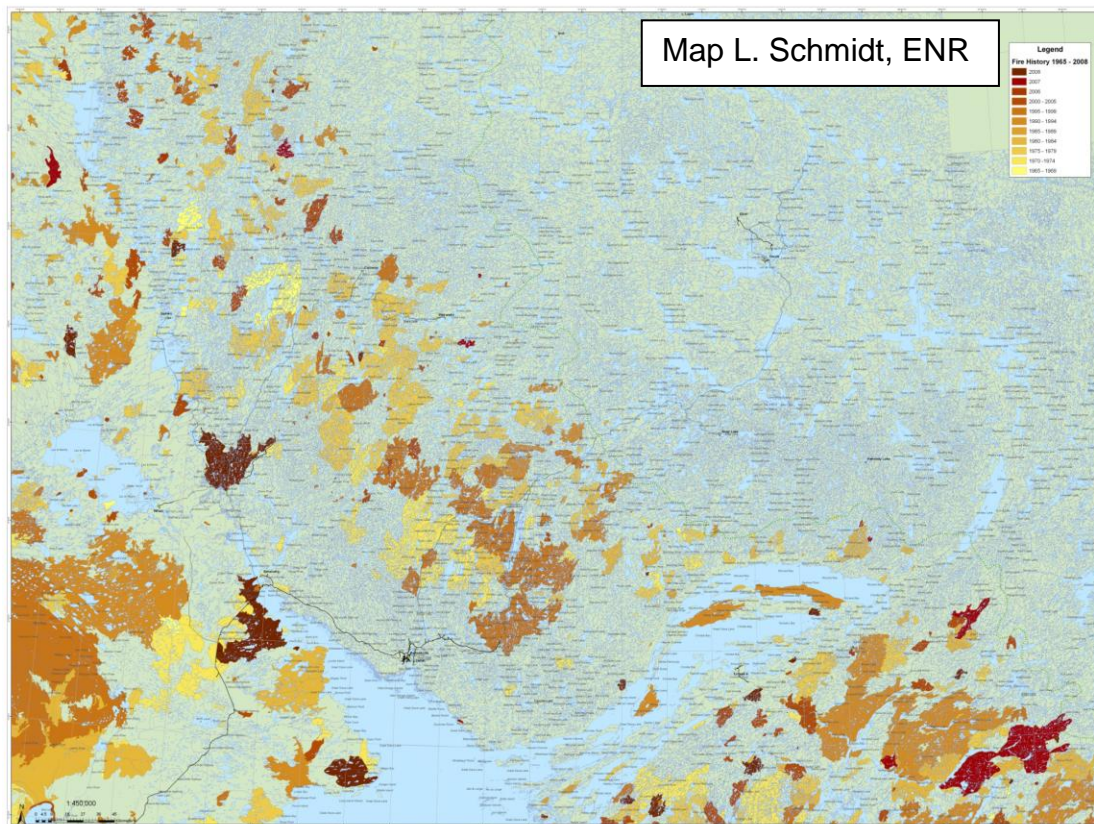


5.4 WOLVES AND OTHER PREDATORS

Bruno Croft presented the graph above with information about annual surveys of wolf dens at the south end of the Bathurst summer range. Biologist Dean Cluff (GNWT ENR) has collected this information annually since 1996. Over the last 5 years the number of wolf dens actively being used in August has dropped from 17 to 1. On the June 2009 Bathurst calving ground survey, there were a total of 4 wolf sightings and 8 bear sightings in about 15,000 km of survey flight lines. Overall, this information suggests that wolf numbers have dropped as the Bathurst herd has declined. Similar patterns were noted by biologist Tom Bergerud during the George River herd's period of low numbers in the 1940's; with no other prey to rely on, wolves essentially disappeared in this herd's range in Quebec/Labrador.

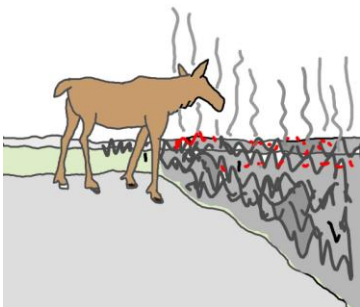
Some workshop participants were concerned that given the small caribou population size, predation by wolves and bears could have a strong negative impact on the Bathurst herd. They suggested that measures be taken to control the wolf population, particularly along the tree-line. Other participants supported the conservation of wolves as being part of nature, given that wolf numbers have declined in response to the decline of the caribou herd. They believed that wolf population control was unnecessary and generally ineffectual. Participants did not reach consensus on the management of predation by wolves.





5.5 FIRE ON THE WINTER RANGE

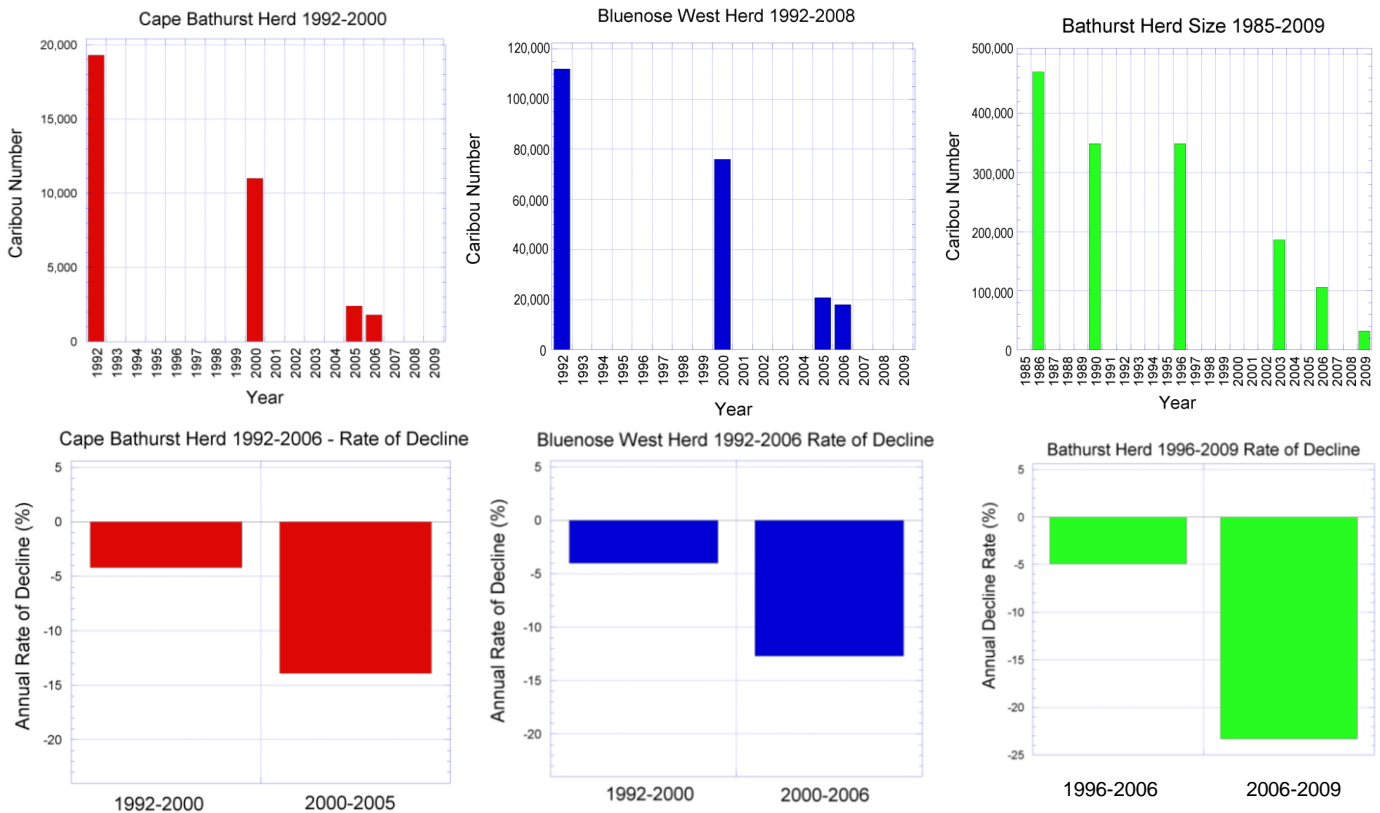
The map above shows fire history in the North Slave region, with different colours for burns from different years. Relations between caribou and fire on their forested winter range are complex. Fire is a normal part of the boreal forest ecosystem, and caribou have co-existed with fire for a long time.



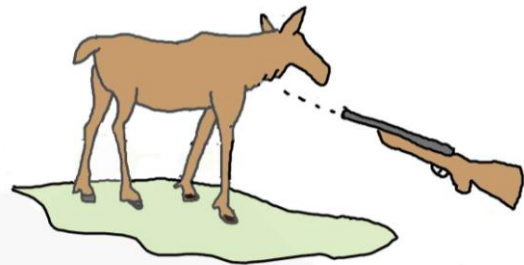
Some fires burn everything down to the mineral soil; others leave wetter areas unburned and extensive islands of unburned forest may be left in some burns. Caribou generally use regenerating burns little until they are at least 50-60 years old, because the lichens they eat in winter are very slow-growing. Complete fire suppression on a large landscape is not practical in the NWT. In some southern regions, prolonged fire suppression may be counter-productive because fuel build-up encourages very large fires that may be difficult to stop.

Several workshop participants expressed their concern that large wildfires in recent years have destroyed areas of important caribou winter habitat, particularly east and south of Great Slave Lake. They suggested that the remaining corridors of habitat through burned areas be given increased fire protection to allow the caribou to move through the landscape during their migration and to feed in during winter. Other participants felt that fire was a natural part of the landscape and that controlling fire across the range could lead to large, more destructive fires due to fuel loading. Workshop participants did not reach consensus on the management of fire, but most participants felt that key caribou winter ranges should be protected. Ernie Campbell explained that the department's fire program was due for review and there would be community meetings in which people could participate.

Declines in the Cape Bathurst, Bluenose West & Bathurst herds 1992-2009



6.0 DECLINES & HUNTER HARVEST IN THREE NWT CARIBOU HERDS



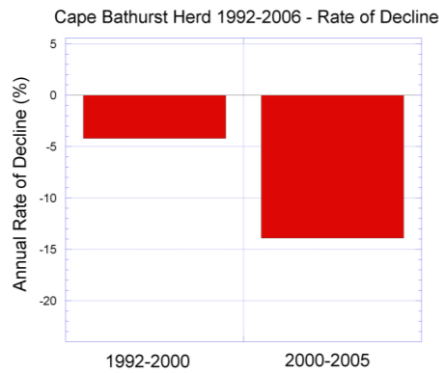
Three NWT barren-ground caribou herds have experienced similar declines in recent years, and comparisons between the herds show the significance of hunter harvest and harvest management. The Cape Bathurst, Bluenose West and Bathurst herds all declined relatively slowly, then declined at an accelerated rate as their numbers came down.

The Cape Bathurst herd declined at about 4%/year from 1992 to 2000, then at a rate of 14% per year from 2000 to 2006.

The Bluenose West herd similarly declined by about 4% per year from 1992 to 2000, then at a faster 13% per year from 2000 to 2006.

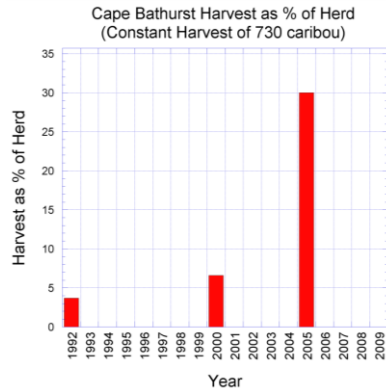
The Bathurst herd declined at about 5% per year from 1996 to 2006, then by 22-23% per year from 2006 to 2009.

In the next pages the declines of these three herds are considered in more detail.



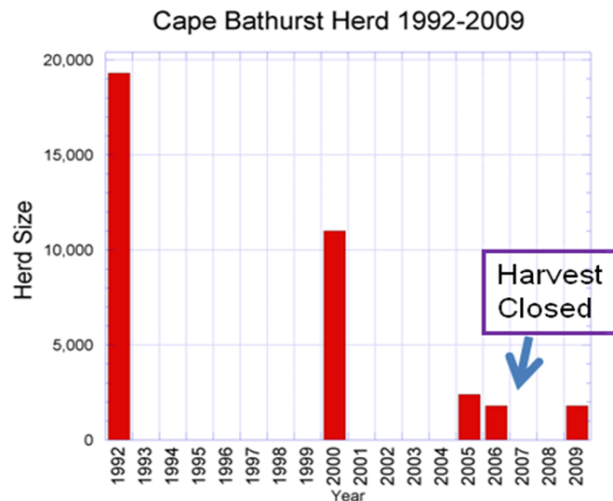
Cape Bathurst Herd 2000-2006:

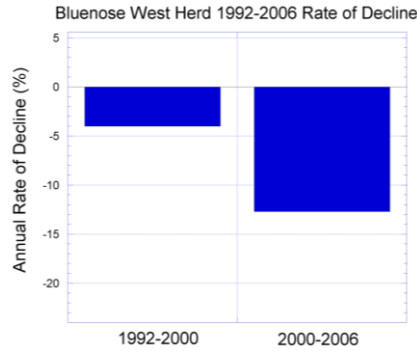
- Late calving
- Low cow:calf ratios on calving ground
- Likely declining natural trend
- Estimated harvest 730 caribou (2005) (mostly cows)



6.1 DECLINE AND HARVEST MANAGEMENT IN THE CAPE BATHURST HERD

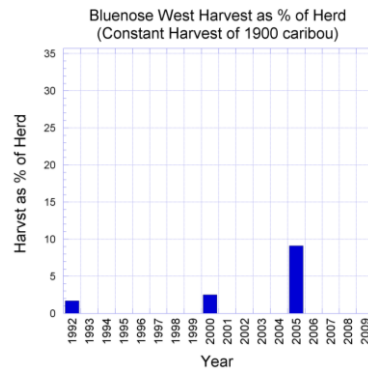
In the early 2000's, late calving and low calf:cow ratios were recorded on the calving grounds of the Cape Bathurst herd. These observations would indicate that the caribou were nutritionally limited, and likely would have been declining naturally without hunting. The estimated hunter harvest for the Cape Bathurst herd was around 730 caribou in 2005 (primarily cows). If this harvest was about the same in earlier years, then 730 caribou would be about 3% of the herd in 1992, about 7% in 2000, and about 30% in 2005. No caribou herd could survive long at this level of harvest (30%), especially if it was already declining. By recommendation of the Wildlife Management Advisory Council (NWT) (WMAC-NWT) and implemented by GNWT, all harvest on this herd was closed in 2007. A July 2009 survey of this herd indicates a stable trend from 2006 to 2009. This result suggests that the harvest contributed significantly to the herd's earlier decline.





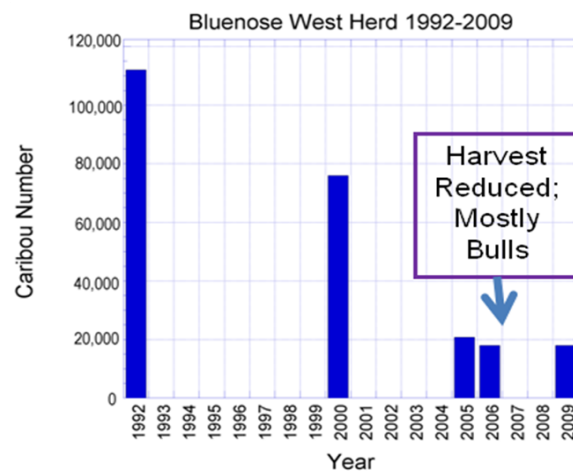
Bluenose West Herd 2000-2006:

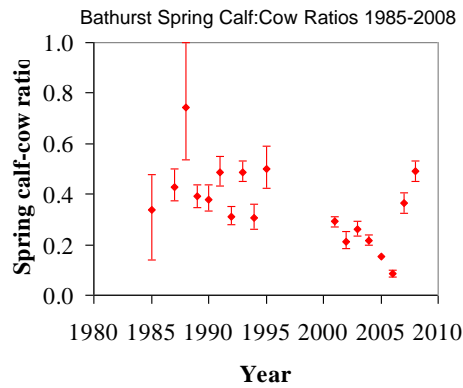
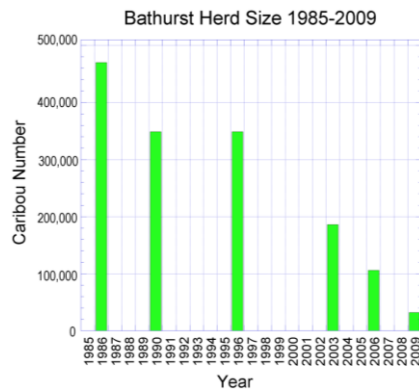
- Late calving
- Low cow:calf ratios on calving ground
- Likely declining natural trend
- Estimated harvest 1900 caribou (2005)
(mostly cows)



6.2 DECLINE AND HARVEST MANAGEMENT IN THE BLUENOSE WEST HERD

Patterns of decline in the Bluenose West herd in the early 2000's were similar to those in the Cape Bathurst herd. Late calving and low cow:calf ratios on the calving ground indicate that the caribou were nutritionally limited, and likely would have been declining naturally without hunting. The estimated hunter harvest for the Bluenose West herd was around 1900 caribou in 2005 (primarily cows). If this harvest was about the same in earlier years, then this harvest would be about 2% of the herd in 1992, about 3% in 2000, and about 9% in 2005. Evaluation of the decline by C. Nicolson suggests that the harvest may have been higher than 1900/year in the 2000's. By recommendation of WMAC-NWT and the Gwich'in and Sahtu Renewable Resource Boards, a Total Allowable Harvest was set at 720 caribou (4% of the herd), with at least 80% bulls. A July 2009 survey of this herd indicates a stable trend from 2006 to 2009. As with the Cape Bathurst herd, this change suggests that the harvest had contributed significantly to the decline in the early 2000's. The Bluenose West and Cape Bathurst herds are presently the only barren-ground herds monitored by GNWT with a stable trend.





2000-2006 trends:

- Late calving
- Low calf survival
- Low bull:cow ratios
- Likely declining natural trend
- Estimated harvest 5000-7000 caribou (2008) (>50% cows)

Bathurst Caribou Herd Trends 2000-2008

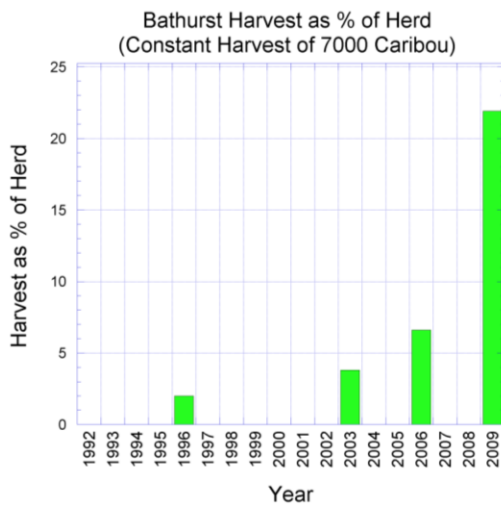
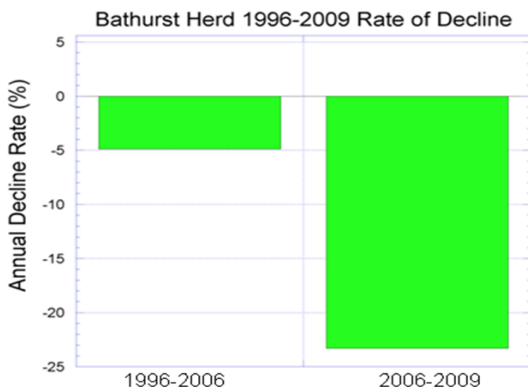
(Estimated harvest 16,000 caribou/year
Dogrib Harvest Study, early 1990's)

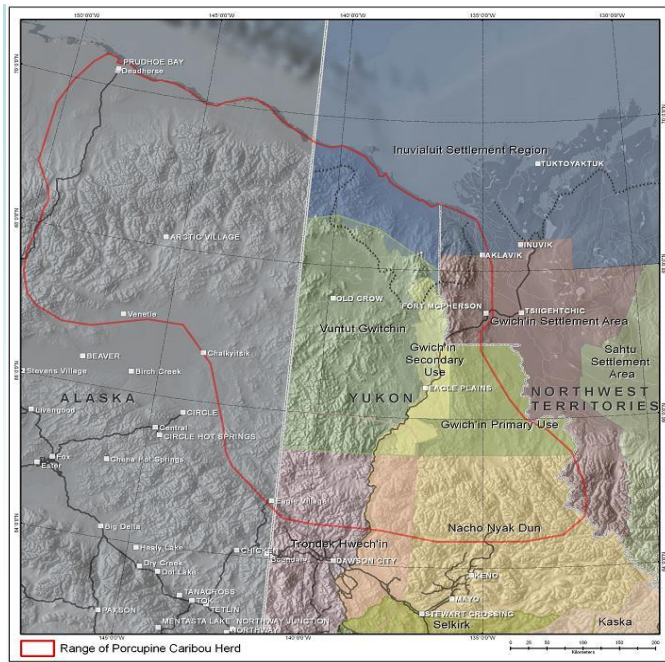
6.3 DECLINE AND HARVEST IN THE BATHURST HERD

An evaluation of the decline of the Bathurst herd shows similarities to the declines of the Cape Bathurst and Bluenose West herds. Between 1996 and 2006 the herd declined at an average rate of 5% per year. After 2006 the herd declined at a staggering 22-23% per year. Spring calf:cow ratios in the early 2000's were low, indicating that the herd was most likely nutritionally limited and would have declined naturally, without hunting, over this period.

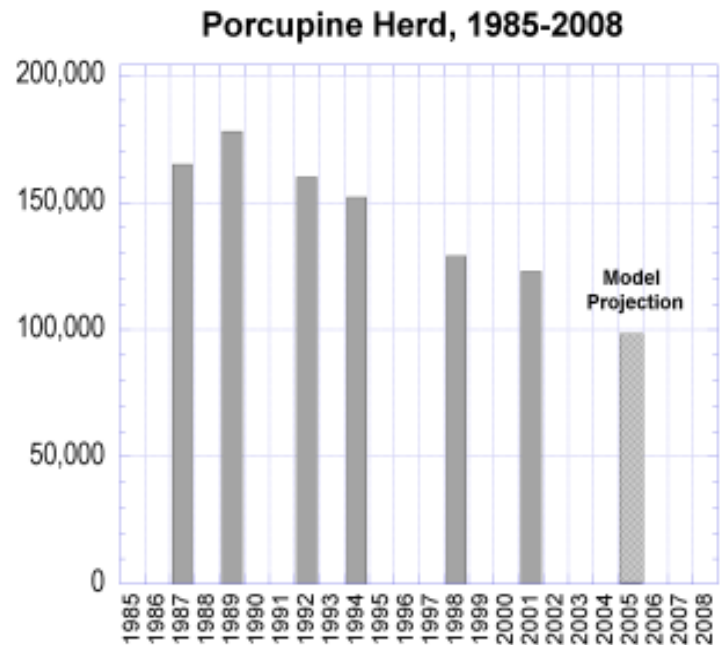
The hunter harvest has not been well documented for the Bathurst herd, but an estimate of 7000 caribou/year is well below the 16,000/year for this herd estimated by the Dogrib Harvest Study in the early 1990's. As with the other two herds, this harvest would have been barely 2% of the herd in 1996, increasing to 4% in 2003, 7% in 2006, and 22% in 2009. A lower harvest of 5000 caribou produces a similar result, with 15.6% of the herd taken in 2009. The winter harvest is mostly cows and the fall harvest is mostly bulls, and likely varies somewhat from year to year.

The Bathurst herd has been hunted by more communities in the NWT than any other. With winter roads have come increased access and greater hunter numbers. No caribou herd could survive a harvest of 15-22% per year (mostly cows) for any amount of time.





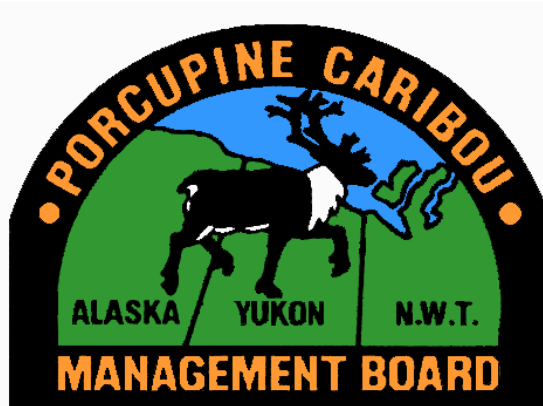
Range of the Porcupine Herd in Alaska, Yukon & NWT



7.0 HARVEST MANAGEMENT FOR THE PORCUPINE CARIBOU HERD

Joe Tetlich, chair of the Porcupine Caribou Management Board (PCMB) gave a presentation on the experiences of the PCMB in managing the Porcupine Caribou Herd. The PCMB is a co-management board made up of representatives from the Gwich'in Tribal Council, the Council of Yukon First Nations, the Inuvialuit Game Council, the Government of the Yukon, the GNWT, and the Government of Canada. Recently, the PCMB has focused on protecting the calving grounds of the Porcupine herd in the Arctic National Wildlife Refuge and managing hunting on the Dempster Highway.

The PCMB has recently completed a draft Harvest Management Plan for the Porcupine Herd and is currently working on a Native User Agreement among the various groups that use the herd. The Harvest Management Plan sets population ranges within which harvesting rules change and a minimum population size below which all harvest will be closed. The most important lesson learned by the PCMB during the development of the Harvest Management Plan is the need to “walk together”, to work collaboratively to conserve the caribou. The plan took about 5 years to complete.

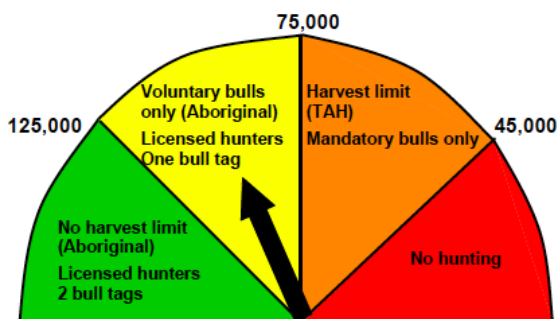
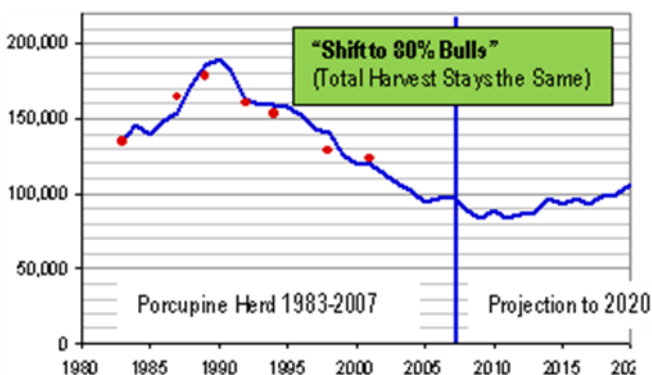
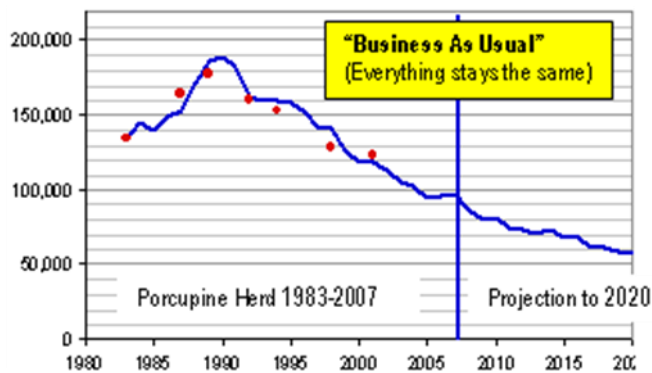


7.1 THE PORCUPINE CARIBOU CALCULATOR AND HARVEST MANAGEMENT

The PCMB found that one of their management challenges was a lack of survey data. Poor weather conditions have prevented population surveys of the herd since 2001 (7 years in a row), but there was good information on harvest, calf:cow ratios, and other indicators. Craig Nicolson from the University of Massachusetts helped develop a “Caribou Calculator” to model population size and try to understand how various factors influence the population. This model is essentially a balance sheet where numbers of caribou added and lost every year are tracked. The calculator can be used to:

- estimate likely herd size without a recent population survey;
- look ahead to evaluate likely future trends of the herd;
- consider how the size and sex ratio of the harvest is likely to affect the herd’s future; and
- identify areas where better information is needed.

It is important to remember that this model cannot predict the future; it can only project what is likely to happen under a certain set of conditions. Unexpected weather effects, for example, can still occur, and these are unpredictable.

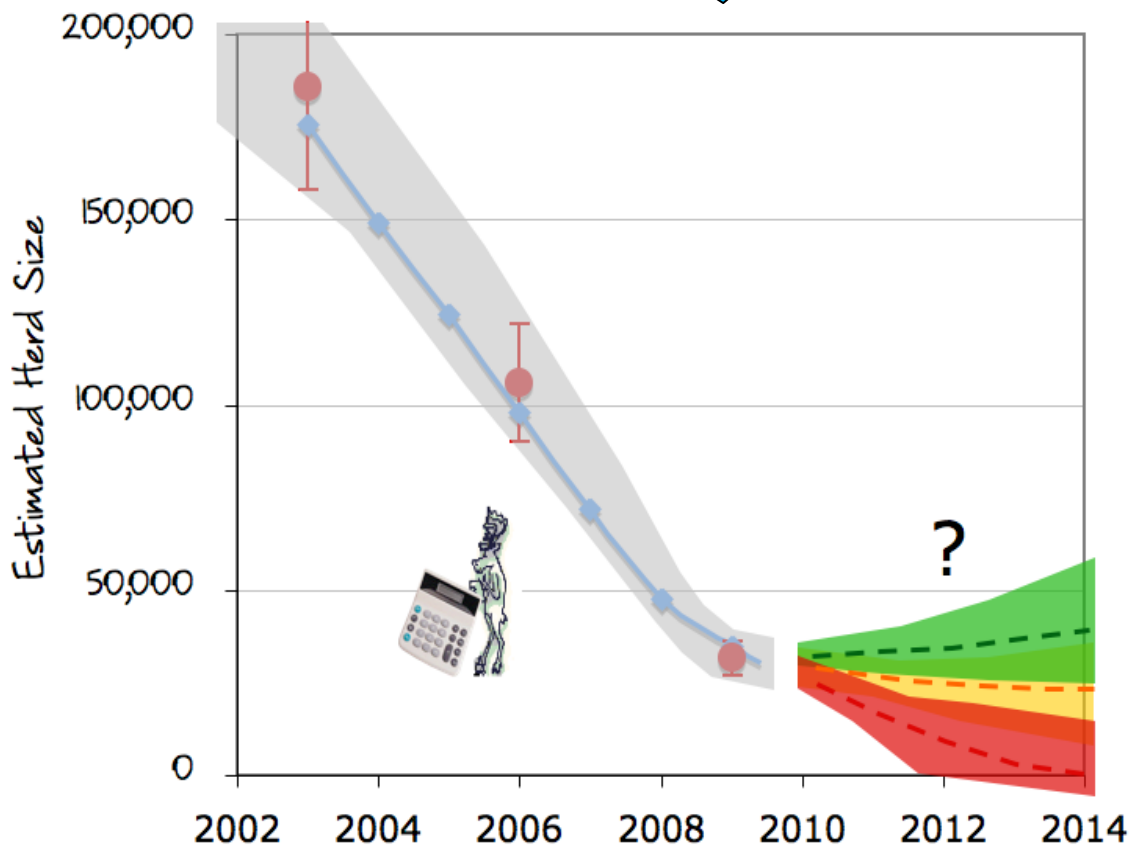
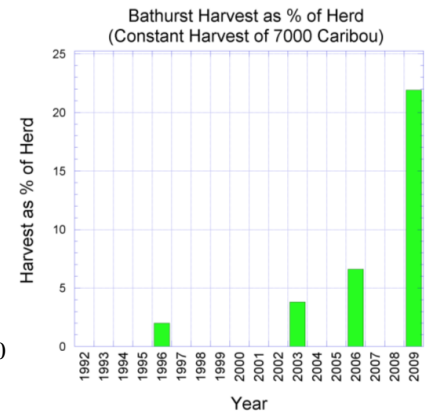
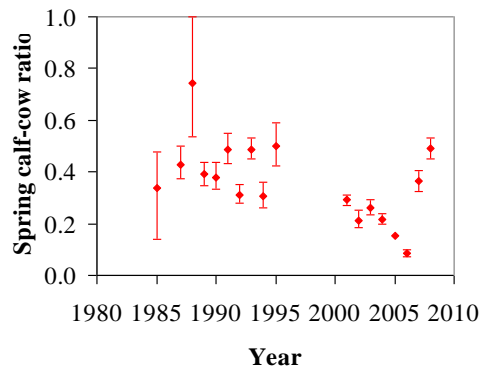
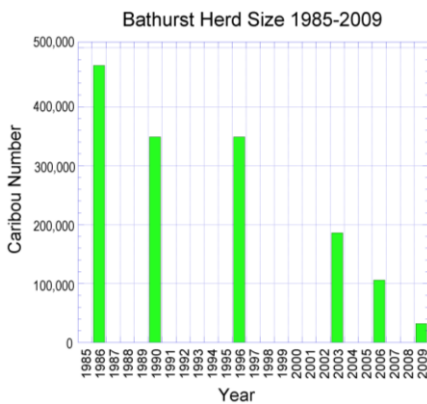


1. The first step with the model was to make sure it was faithful to the real world – the model produced the blue line (seen in the graph to the left) from 1983 to 2001, and the red dots were actual survey numbers. Thus the model fit the survey numbers well.
2. The next step was to project into the future: what happens if everything, including harvest, stays the same? The model indicated that a continued decline was likely. The harvest was estimated at 3,000 caribou/year, 61% of them cows.
3. The model was then used to ask “what if” questions. For example, the projection in the second graph on the left shows what might happen if the number of harvested caribou stayed the same (3,000) but shifted to 80% bulls. The model suggested that this fairly simple change could help the herd stabilize.
4. One key point from the modeling was that population trend is highly sensitive to the rate at which cows die (mortality rate). Anything that increases their mortality rate, such as cow harvest, has a large impact on the herd.
5. The PCMB used the model to help develop the coloured zones (at left) in their Harvest Management Plan.

At high numbers (green), the harvest would be unrestricted. Below 125,000 (yellow), the harvest would be voluntary bulls only. Below 75,000 (orange) the harvest would be mandatory bulls only. Below 45,000 (red) all harvest would be closed to allow the herd to recover.

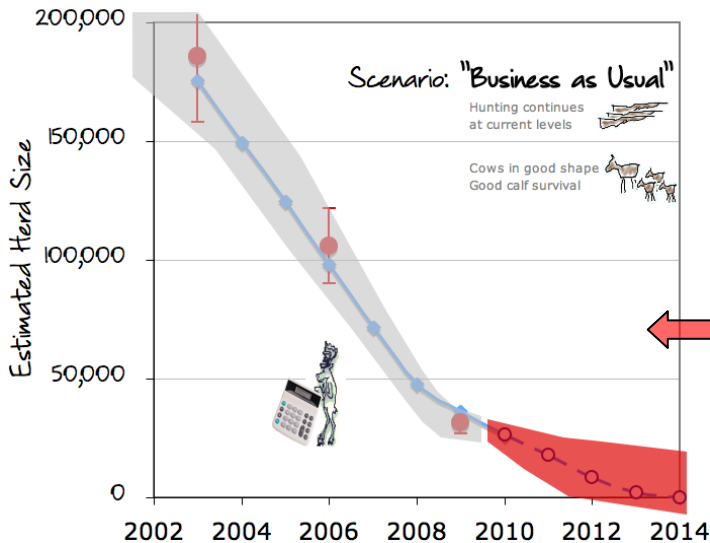
8.0 THE BATHURST CARIBOU CALCULATOR AND HARVEST MANAGEMENT

In 2007 the co-management boards recommended that ENR develop a population model for NWT herds. In 2008 and 2009, GNWT contracted Craig Nicolson to adapt the Caribou Calculator developed for the Porcupine herd to the Bathurst herd, and to use it to look at possible futures for the herd. Craig used information on Bathurst calf survival, herd size, condition, pregnancy rate and harvest, and tried to project what the herd's trend might be over the next 5 years (2009-2014). Given the herd's recent rapid decline, it is difficult to try to look ahead more than 5 years.



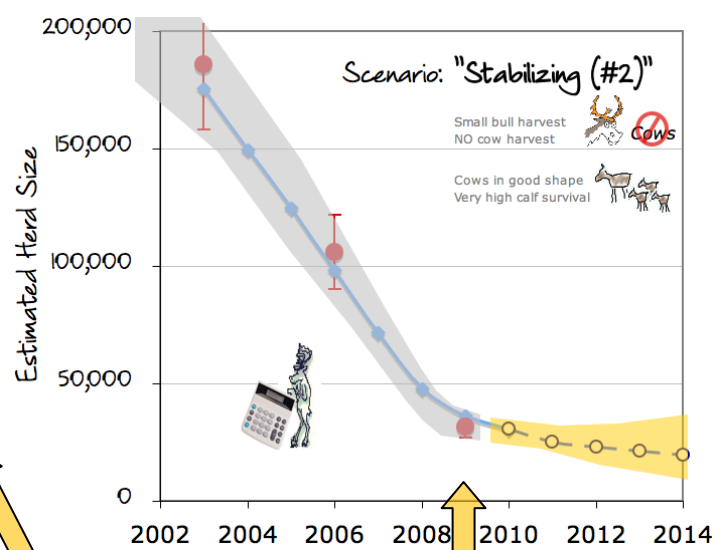
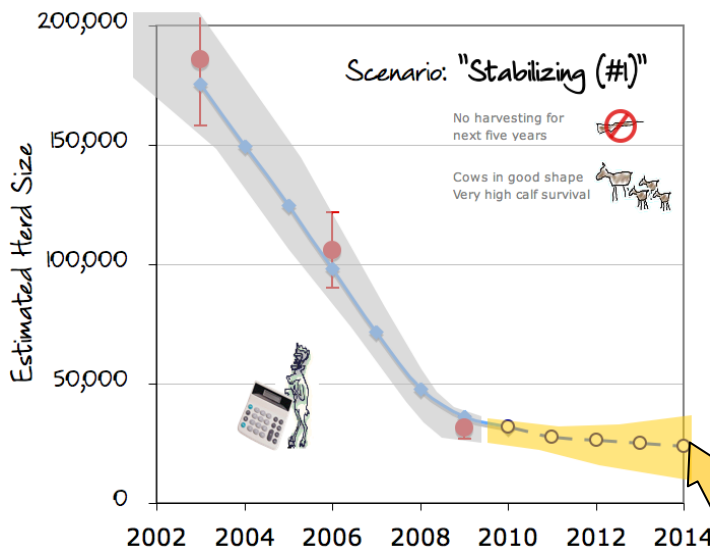
8.1 POSSIBLE FUTURES FOR THE BATHURST HERD

The graphs on this page were generated from the Bathurst Caribou Calculator. They are not exact predictions, but they give some idea of likely trends under various sets of conditions.



Business as Usual

If the hunter harvest stays the same, cows stay in good shape, and recent good calf survival continues, the herd will most likely disappear in the next 4-5 years. There is no level of calf production or survival that can compensate for current high cow death rates.

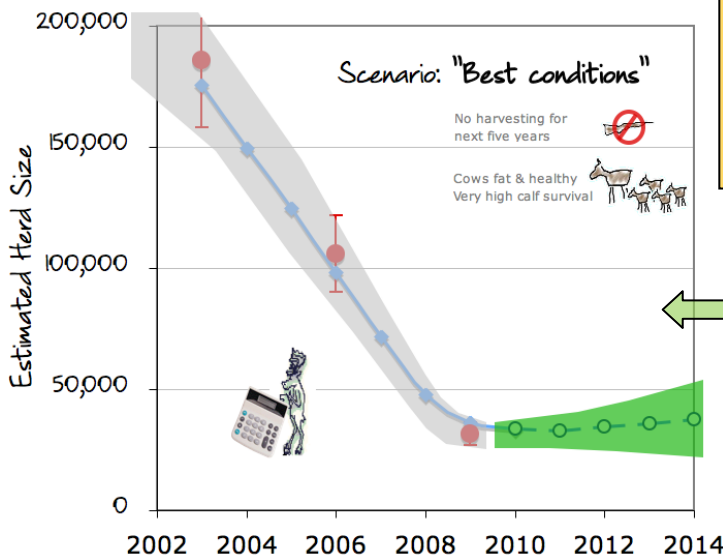


Stabilizing Scenario #1

If there is no harvest for the next 5 years, cows are in good shape, and calf survival is very good, the decline should slow down and the herd might begin to stabilize.

Stabilizing Scenario #2

If there is no cow harvest for the next 5 years and a limited small bull harvest, cows are in good shape, and calf survival is very good, the decline should slow down and the herd might begin to stabilize.



Best Conditions

If there is no harvest for 5 years, cows stay in very good shape, and calf survival is very good, the herd might stabilize and start to increase.

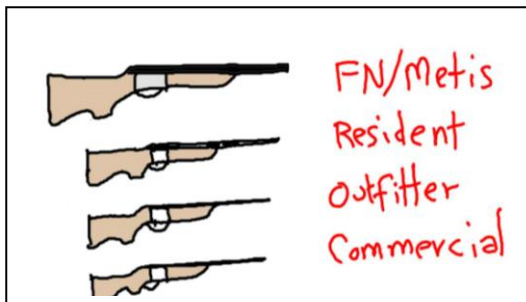
Currently the herd has a large proportion of young caribou that are not yet breeding. This is one reason why an increase in the herd can at best be slow under best conditions.



8.2. MANAGING THE BATHURST CARIBOU HARVEST

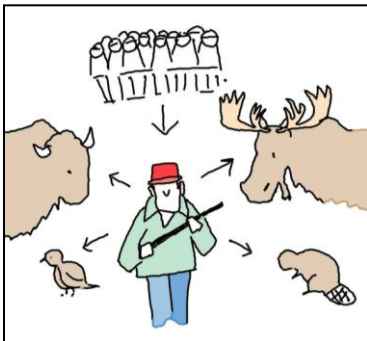
The information on the Bathurst herd's rapid decline and the growing role of harvest in the later stages of the decline was not easy for all participants to accept. However, people agreed that the decline was real and strong management actions would need to be decided on soon, and these would have to include reduced harvest. Projections from the Bathurst Caribou Calculator suggest that even with complete harvest closure and otherwise good conditions for the herd, stabilization and the beginning of a slow recovery are the best that could be expected over the next 5 years. Harvest of the Bathurst and other NWT barren-ground caribou herds falls into 4 classes: commercial tags, guided outfitters, residents and the subsistence/aboriginal hunt.

In the Inuvialuit, Gwich'in and Sahtu Settlement Areas, following priorities for allocation of harvest described in those land claim agreements, the co-management boards recommended, and GNWT implemented, closure of all commercial, resident and outfitted hunting in 2006. These actions were taken to assist the recovery of other caribou herds.



The priorities for allocating harvest in the Tlicho land claim agreement are similar to those in the other NWT land claims, and if the aboriginal harvest has to be restricted for conservation reasons, other kinds of hunting must first be restricted. The decision by Moise and Joyce Rabesca to voluntarily close their outfitted caribou hunting for the coming years was applauded by workshop participants.

There was discussion at both workshop sessions about restricting the aboriginal harvest, which for the Bathurst herd is by far the largest proportion of the hunt, as with other barren-ground caribou herds in the NWT. Aboriginal leaders have already taken the lead in announcing actions to limit their hunt: Yellowknives Dene Chief Edward Sangris announced in September that their fall caribou hunt was cancelled this year. Similarly, Dene Nation Chief Bill Erasmus, Tłıchǫ Grand Chief Joe Rabesca and the other Tłıchǫ chiefs supported GNWT ENR Minister Michael Miltenberger when the June 2009 Bathurst survey results were released to the media in Sept. 2009. The Minister and Chiefs pledged to make tough decisions for the recovery of the caribou herd. Details of harvest management will be determined through the Tłıchǫ /GNWT joint proposal, WRRB hearings and recommendations, and consultation meetings.

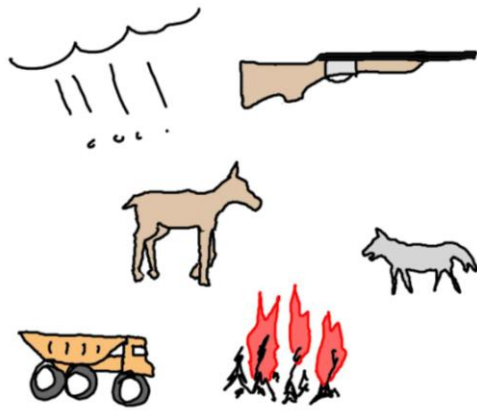
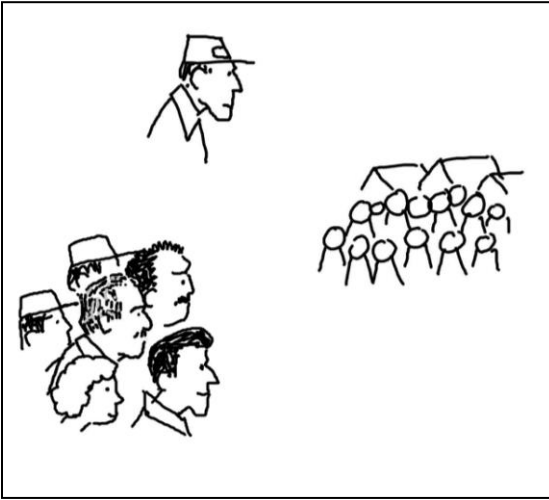


Participants from various communities were asked about the alternatives they might have if they were unable to hunt caribou. Some participants pointed out that times of caribou scarcity had occurred before, and that aboriginal hunters had fished and hunted bison, moose, beaver, muskoxen and woodland caribou during those times.

For most communities south of Great Slave Lake, there seemed to be several alternative sources of meat (especially bison), and some of these communities do not rely heavily on caribou.

The most difficult situation will likely be for the communities such as Lutsel K'e and the Tłıchǫ communities, which have few alternatives to caribou, have a high cost of living and in some cases are not on the highway system. These communities will need help finding alternatives.

8.3 FINAL THOUGHTS



1. Joe Tetlichy stressed the importance of “walking together” in developing the Porcupine Caribou Harvest Management Plan. Several participants stressed the need for everyone to work together (communities and governments) for the recovery of the Bathurst herd.
2. Participants found the workshops informative but several participants pointed out the importance of bringing the information to all affected communities. The representatives from the communities who attended the workshops can help with this but GNWT needs to visit all communities.
3. A number of speakers emphasized the need for immediate action, including sacrificing in the present for the sake of future generations.
4. Some communities will experience real hardship if they cannot hunt caribou – this needs to be addressed.
5. The hunter harvest needs to be managed but management of the Bathurst herd needs to be comprehensive and consider both short-term and long-term actions.
6. The final words are from Danny Beaulieu’s story:

We are the descendants of the caribou. The caribou once helped our people to recover – now it’s our turn to help them.





APPENDIX 1. WORKSHOP PARTICIPANTS

Facilitator & Cartoonist Doug Urquhart (Whitehorse); Note-taker & Report-writer Lorien Nesbitt (Yellowknife)

Note: GNWT ENR is Government of the Northwest Territories, Environment and Natural Resources

Workshop Participants

(Alphabetic Order)

Jan Adamczewski (GNWT ENR)
 Frank Arrowmaker (Gameti)
 Archana Bali (University of Alaska student)
 Danny Beaulieu (GNWT ENR)
 Fred Beaulieu (Salt River First Nation)
 Henry Beaver (Salt River First Nation)
 Arthur Beck (NWT Métis Nation, Ft Resolution)
 Grant Beck (North Slave Métis Alliance)
 Stanley Beck (Deninu K'ue First Nation, Ft. Resolution)
 Joe Black (Behchokö)
 Ernie Campbell (GNWT ENR)
 Charlie Catholique (Lutsel K'e First Nation)
 Bruno Croft (GNWT ENR)
 William Chocolate (Gamèti)
 Joe Dryneck (Wekweeti)
 Mathieu Dumond (Government of Nunavut)
 Audrey Enge (North Slave Métis Alliance)
 August Enzo (Lutsel K'e First Nation)
 Earl Evans (NWT Métis Nation, Ft Smith)
 Ron Fatt (Lutsel K'e First Nation)
 Susan Fleck (GNWT ENR)
 Freddie Flunkie (Whati)
 Bruce Football (Wekweeti)
 Kerri Garner (Tlicho Government)
 Tina Giroux (Saskatchewan, Prince Albert Grand Council)
 Gary Jaeb (caribou outfitter)

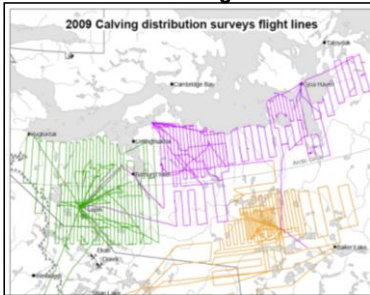
Ed Jones (North Slave Métis Alliance)
 Alicia Kelly (GNWT ENR)
 Russell Kenny (Déline Renewable Resources Council)
 Solomon King (Deninu K'ue First Nation, Ft. Resolution)
 George Lafferty (NWT Métis Nation)
 Ray McDonald (Black Lake, Saskatchewan)
 Richard Mercredi (NWT Métis Nation, Ft Smith)
 Michael Miltenberger (GNWT ENR Minister)
 Craig Nicolson (Univ. Massachusetts, Modeler)
 Margaret Peterson (Caribou outfitter)
 Grant Pryznyk (Wek'èezhii Renewable Resources Board)
 Joyce Rabesca (Behchokö, caribou outfitter)
 Moise Rabesca (Wek'èezhii Renewable Resources Board)
 Charlie Rabesca (Behchokö)
 Camilla Rabisca (Sahtu Renewable Resources Board)
 Fred Sangris (Dene Nation Caribou Committee)
 Lance Schmidt (GNWT ENR)
 Cate Sills (GNWT ENR)
 Todd Slack (Yellowknives Dene First Nation)
 Barry Taylor (caribou outfitter)
 Joe Tetlichi (Porcupine Caribou Management Board)
 Kevin Todd (GNWT Industry, Tourism and Investment)
 Raymond Tutcho (Chief, Déline First Nation)
 Leslie Wakelyn (Beverly & Qamanirjuaq Caribou Management Board)
 Charlie Zoe (Whati)

APPENDIX 2. OVERVIEW OF JUNE 2009 BATHURST CALVING PHOTO SURVEY

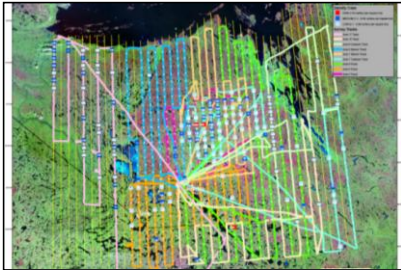
Bathurst 2009 Calving Ground Survey (June 3-12)

(B. Croft, J. Nishi and many more)

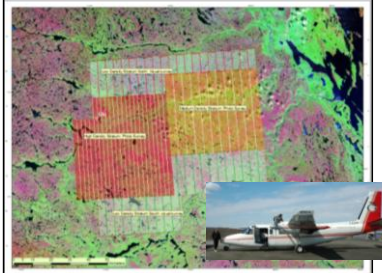
1. Make Sure Nothing is Missed



2. Recon Survey – lines 10 km apart: nearly all breeding cows in one small area



3. Photo-plane takes pictures: 40% coverage High-Density, 20% Medium



6. Correct for Non-Pregnant Cows & Bulls:
16,604 breeding cows x 100/72 x 100/72.3
= Herd Size: 31,897 (rounded to 31,900)

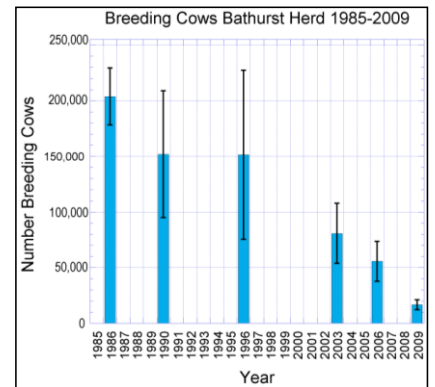
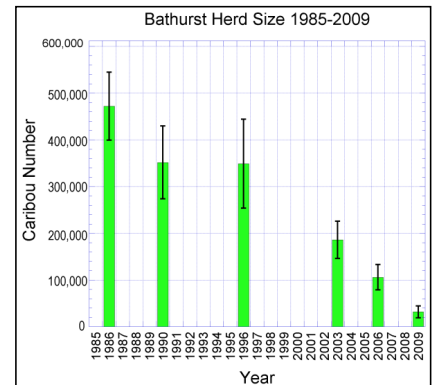
95% Confidence Interval: +/- 10,932

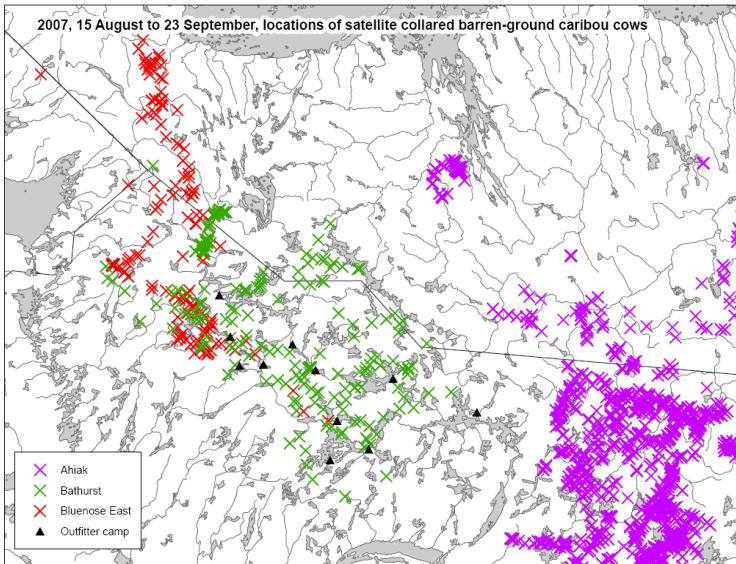
5. Count Photos (July-August)

High-Density: Breeding Cows 11,928
Medium-Density: Breeding Cows 4,629
Low-Density Areas 47
Total 16,604

95% Confidence Interval +/- 4,451

4. Ground Survey: Measure % Breeding Cows: 71% overall





APPENDIX 3. RADIO-COLLARED CARIBOU LOCATIONS DURING FALL HUNTING SEASON (AUG. – SEPT.)

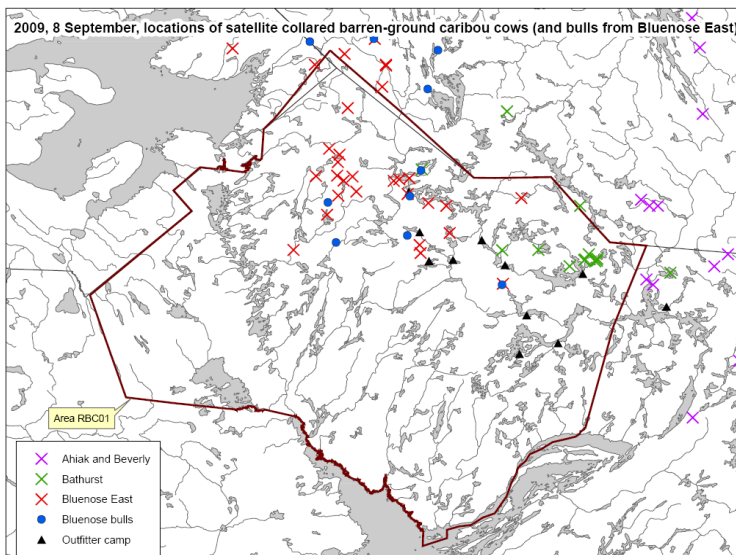
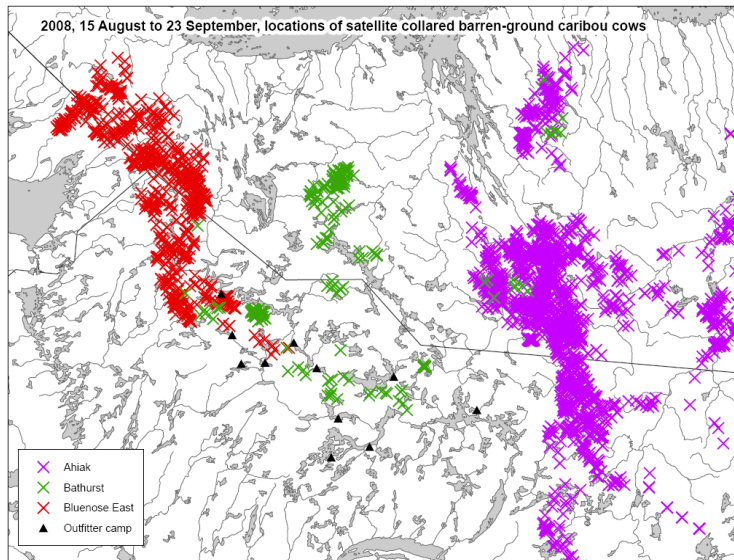
The maps on the left show radio-collar locations during the fall hunting season in August and September, when barren-ground caribou outfitters are active.

Red x's are locations of Bluenose East cows, green ones are Bathurst cows, and purple ones are Ahiak cows. The camps used by outfitters are black triangles.

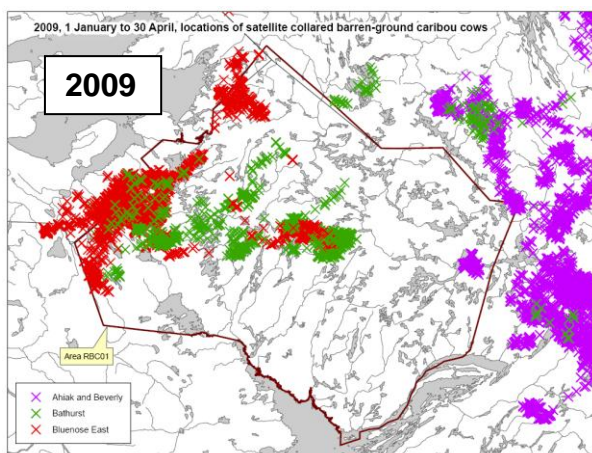
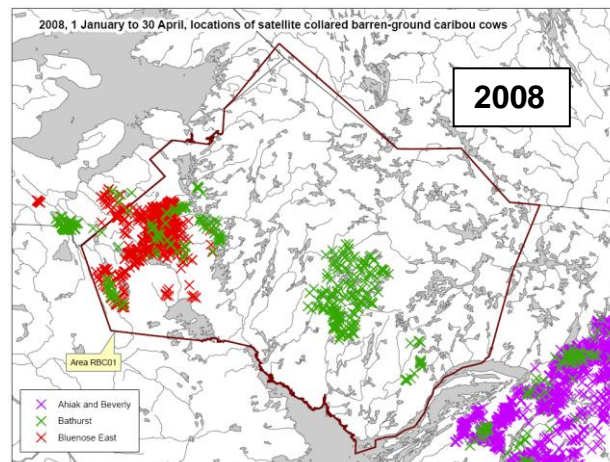
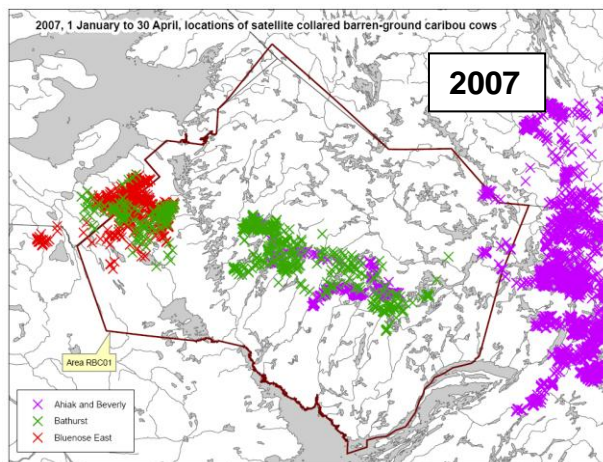
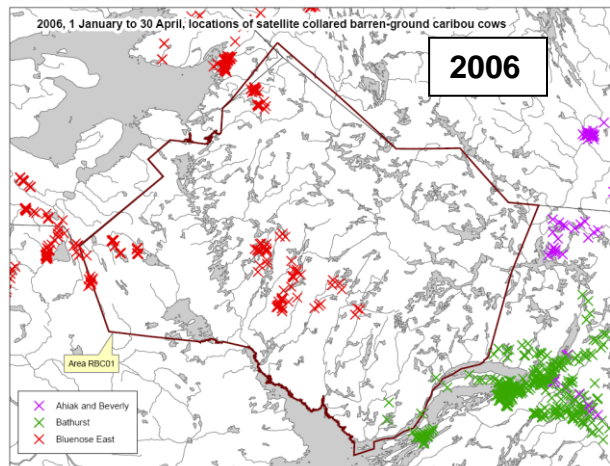
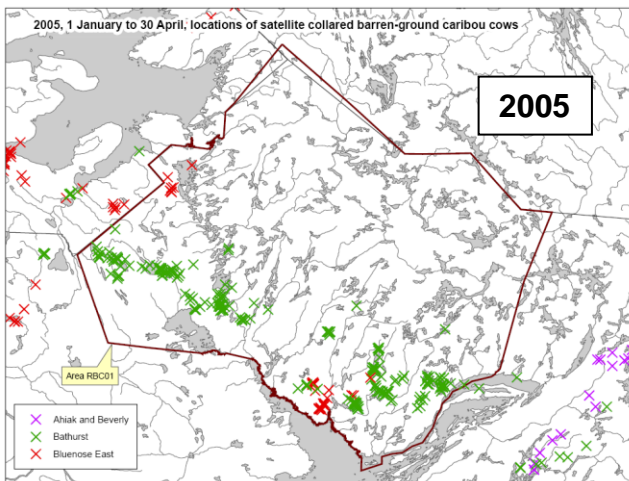
In 2007, there were no Ahiak collars near the outfitter camps, and most of the camps had Bathurst collars in their area. Some of the western camps may have hunted Bluenose East caribou, which overlapped with Bathurst caribou.

In 2008, the pattern was similar. Overall the caribou were further north at this time of year.

Note that the numbers of crosses do not represent numbers of caribou in the three herds; they reflect the numbers of collars on caribou in the 3 herds over a period from August 15 to Sept. 23. The number of collars on Bluenose East caribou increased in 2008, as did collar numbers on Ahiak caribou. There have never been more than 20 collars on Bathurst caribou.



The last map shows a single day's collar locations on Sept. 8, 2009. The additional locations in blue are Bluenose East bulls. This would indicate that most of the outfitter camps in 2009 had Bluenose East caribou nearby, and few Bathurst caribou.



APPENDIX 4. COLLARED CARIBOU WINTER LOCATIONS 2005-2009

These maps show caribou collar locations from January to April for each of the last 5 years (2005-2009). During this part of the winter the caribou tend not to move around much. Overlap between neighbouring herds is common in winter.

In 2005 Bathurst caribou (green) were scattered across a big area north of Great Slave Lake, with some overlap with Bluenose East caribou (red).

In 2006 the Bathurst collars were mostly east of Great Slave Lake and overlapped with Ahiak collars (purple). Tłıchǫ hunters would have been hunting mostly Bluenose East caribou.

Collars provide a great deal of information about caribou movements, migration, and habitat use. Collars can also give us some idea which caribou are likely being hunted from individual communities.

In 2007 the Bathurst collars were back north of Great Slave Lake and overlapped extensively with Bluenose East caribou south of Great Bear Lake.

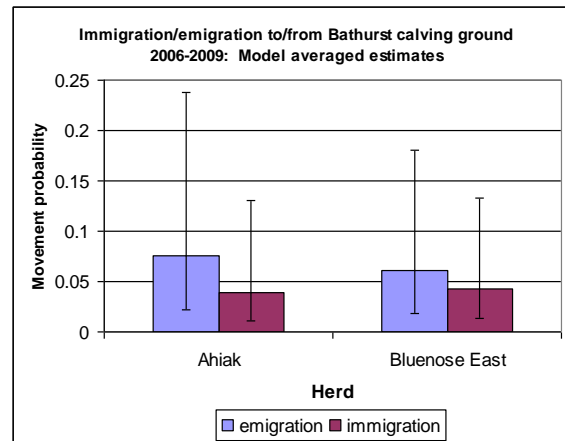
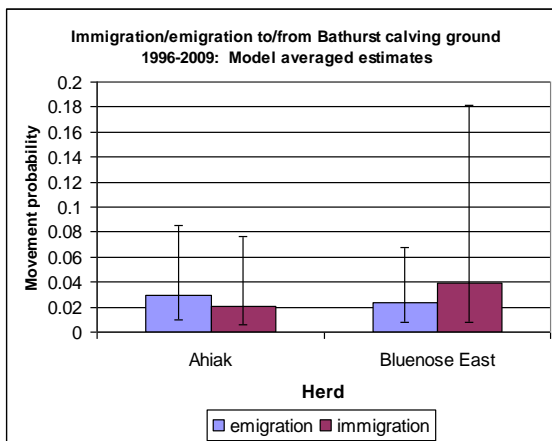
In 2008 the collar locations were generally similar to the previous year.

In 2009 many caribou wintered north of tree-line in all three herds, possibly because of shallow snow on the tundra. Bathurst collars again overlapped extensively with Bluenose East collars.

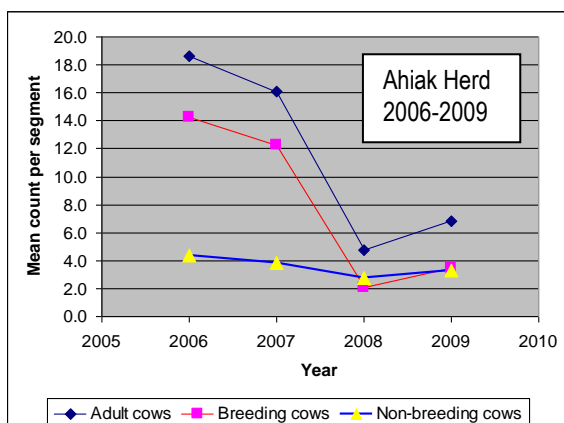
APPENDIX 5. COULD THE MISSING BATHURST CARIBOU BE SOMEWHERE ELSE?

When biologists report that a caribou herd has declined, a question that is often asked is whether the missing caribou could have gone somewhere else. Biologists addressed this question with a statistician (John Boulanger) at a technical meeting in late September 2009 by looking at radio-collar movements between the Bathurst herds and its neighbours to the east (Ahiak herd) and west (Bluenose East herd) and by evaluating population trend in the neighbouring herds.

Radio-Collars: Biologists have long observed that there is a low rate of collared cows switching to calving grounds of neighbouring herds. This has generally occurred at rates of 2-4% in both directions, which suggests little net loss to either herd. In other words, 96-98% of the time, collared cows will go back to the calving ground they used before. Alaskan biologists have reported similar results.



The graph on the left shows that from 1996 to 2008, Bathurst collared cows moved to the Ahiak range at a 3% rate, while 2% of Ahiak collared cows moved to the Bathurst range. The exchange rate with Bluenose East cows was similar (2% of collared cows to BE herd, 4% from BE herd). Over the last 3 years (2006-2009 – graph on the right) on average 7% of collared Bathurst cows moved to the Ahiak range, while 4% of Ahiak collared cows moved to the Bathurst range. The larger percentages mostly reflect limited collar numbers and lower sample size in the Bathurst herd. The exchange rates with the Bluenose East herd were similar. A larger number of radio-collars would provide more confidence in these calculations, but there is no evidence of a large-scale movement to or from the Bathurst herd, with either of its neighbours.

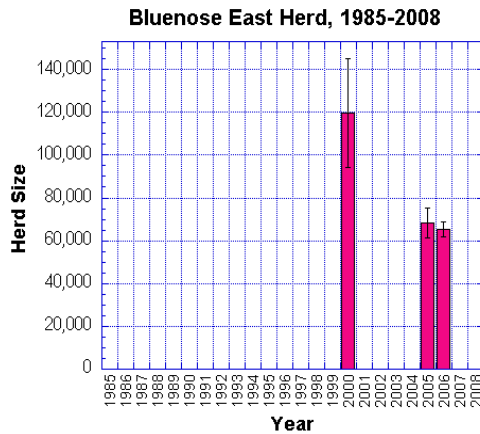


Note: Adult cows are the sum of the breeding and non-breeding cows (above)

Ahiak Herd: Calving reconnaissance surveys on the Ahiak calving ground were carried out by GNWT in 2006, 2007, 2008 and 2009, over the same period of the recent Bathurst decline. These surveys do not provide a precise population estimate, but when done consistently, they give a clear index of trend.

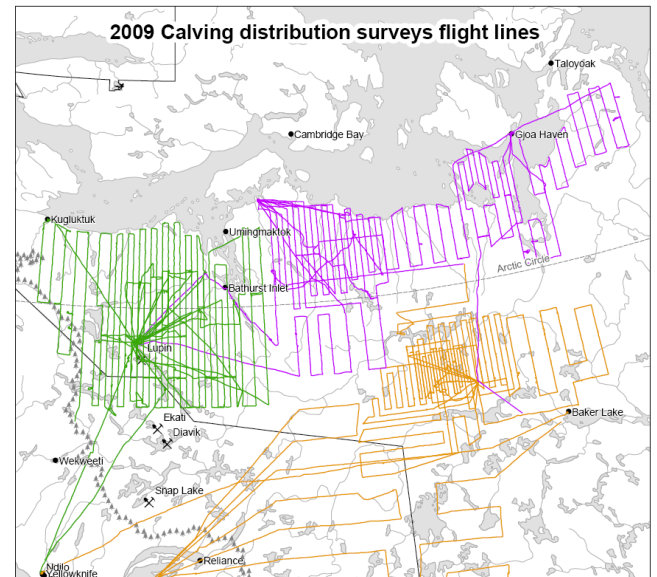
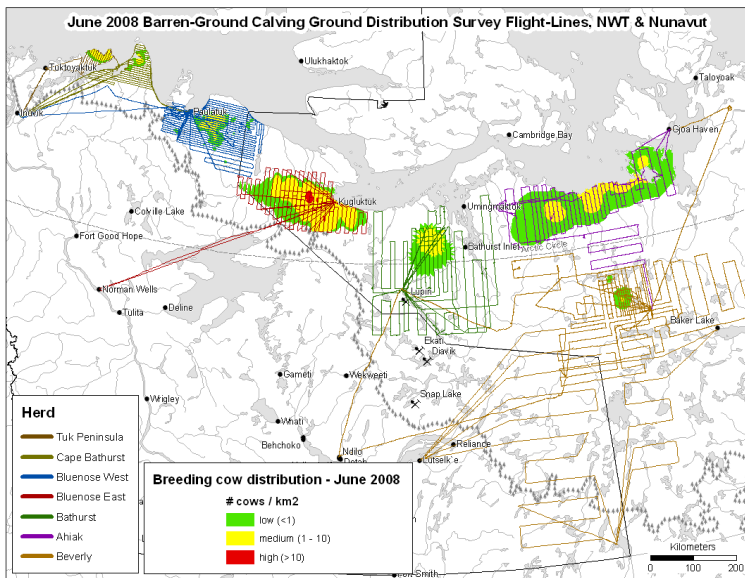
Preliminary analysis by John Boulanger of the average number of caribou seen per 10-km survey segment on the Ahiak surveys (at left) suggests that the number of cows on the Ahiak calving ground in 2009 was about 40% of the number in 2006.

A substantial decline in Ahiak caribou from 2006 to 2009 makes it rather unlikely that there was a large movement of Bathurst caribou to the Ahiak range.



Bluenose East Herd: In 2000 this herd was estimated at about 120,000. From 2000 to 2005/2006, its numbers dropped by nearly 50% to 65,000 in 2006. A post-calving photo survey of this herd was attempted in July 2009, but was unsuccessful because caribou did not group up into tight groups suitable for photography. This survey method can provide very precise population estimates but it requires hot weather in July to make insects highly active. Caribou may form large groups of several thousand in response to such conditions, and these groups can then be photographed and counted to provide a population estimate.

Although the survey was not successful, over 100 hours were flown on the survey by biologist Boyan Tracz and associates, who carried out the previous surveys of this herd in 2005 and 2006. His observations suggested a further decline from 2006; there was no evidence of a large influx of caribou.



Survey Coverage: In recent years GNWT biologists have flown many thousands of km of surveys in June and July. The map on the left (above) shows calving distribution surveys in June 2008. There were many days of additional flying done to show where calving caribou were and where they were not, and to demonstrate the separation between calving grounds. The map on the right (above) shows the approximately 59,000 km flown in June 2009. The area covered is vast, and much of the extra flying was done to verify that no large groups of calving caribou were missed. The chance of missing a large number of caribou becomes very unlikely with this level of survey flying.