



parkscanada.gc.ca

Parks Canada

Community Hearing Presentation to
Nahanni Butte

*Proposed Prairie Creek Mine,
Canadian Zinc Corporation*

EA 0809-002

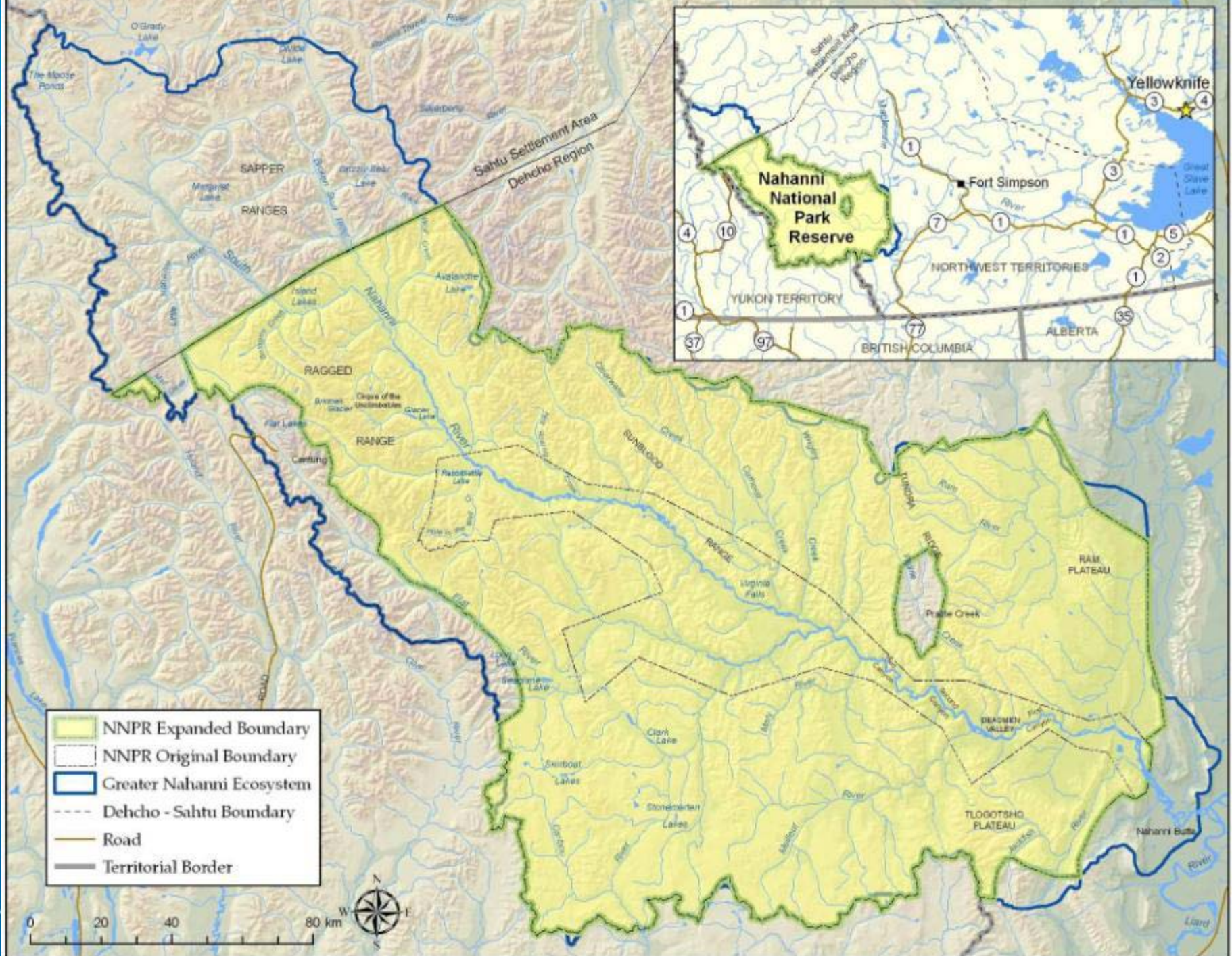
June 22, 2011



Parks
Canada

Parcs
Canada

Canada



Dehcho First Nations Traditional Territory



Road Issues

- Spills
- Road construction
- Karst
- Vegetation
- Wildlife

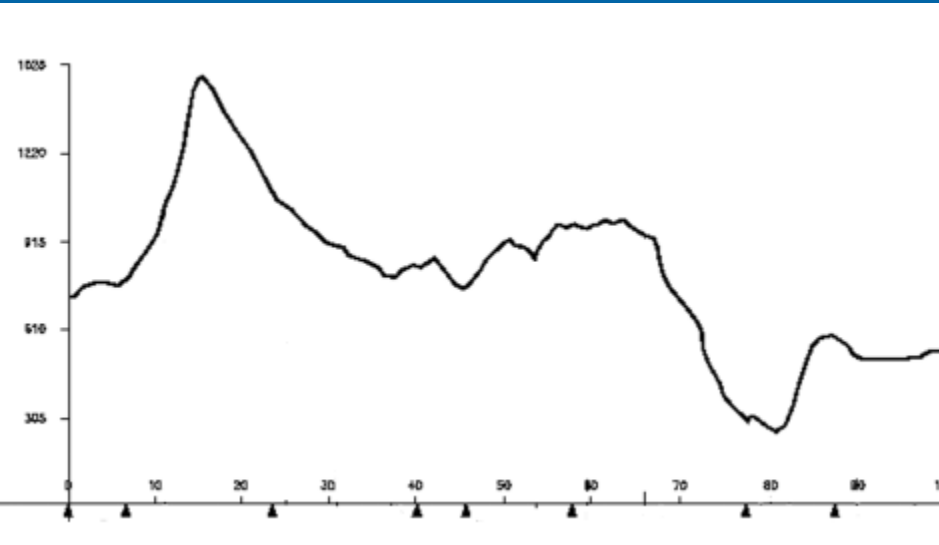
Mine Issues

- Water quality including monitoring
- Operation and Post-Closure



Spills

High probability

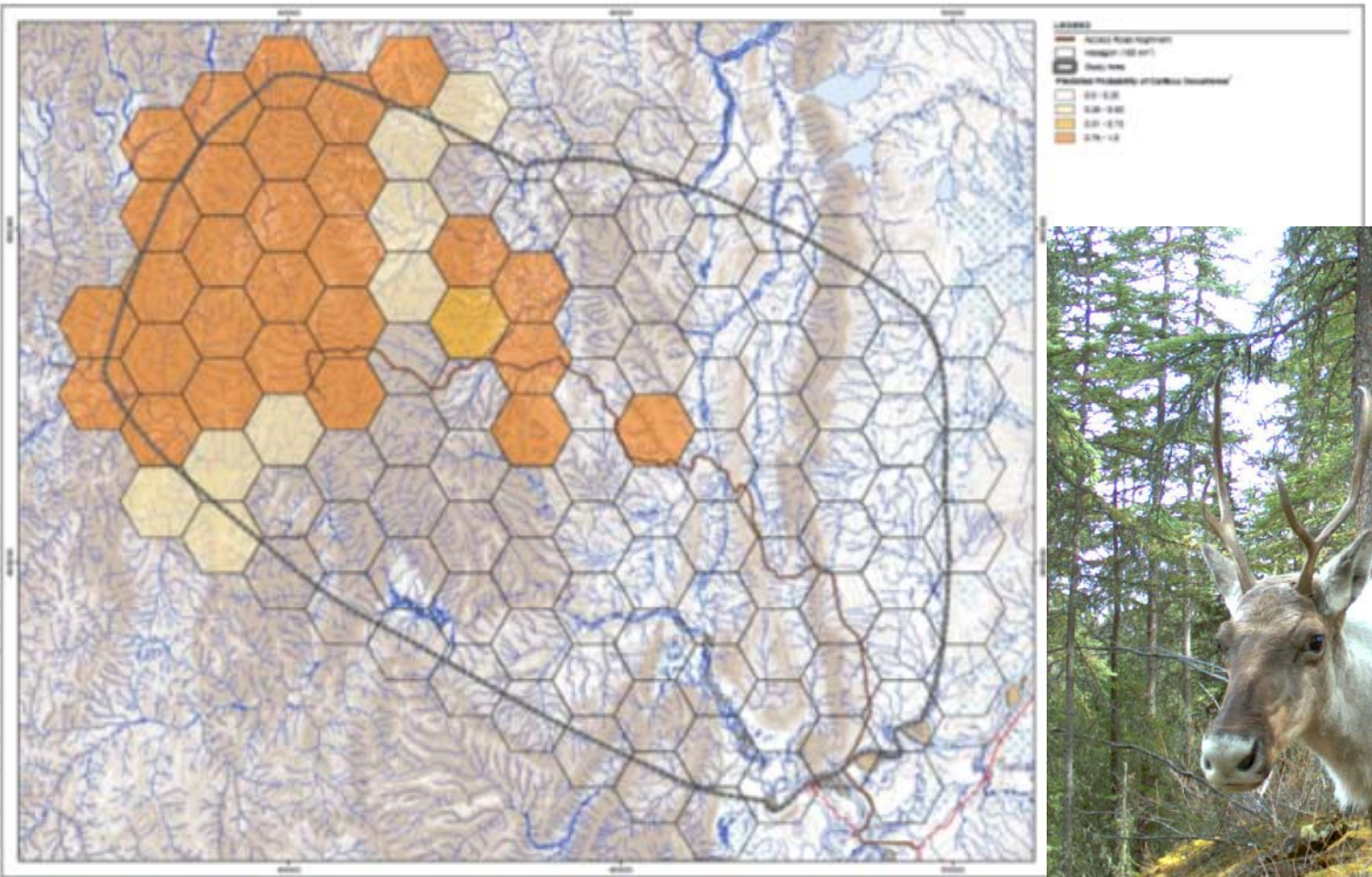


High
consequences



parkscanada.gc.ca

Wildlife



parkscanada.gc.ca

Bringing you Canada's natural and historic treasures

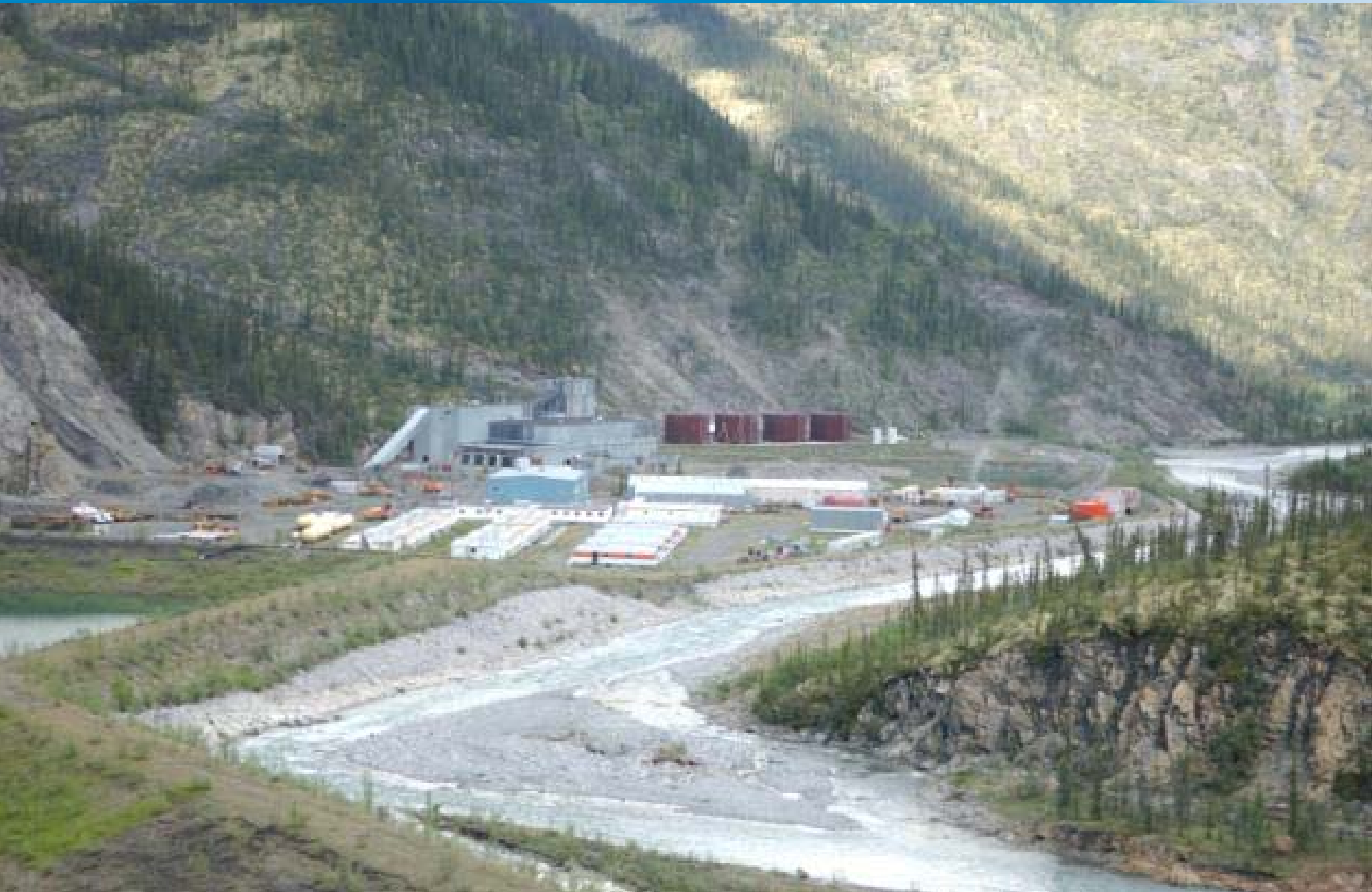
Road



parkscanada.gc.ca

Bringing you

Mine site: Water Quality



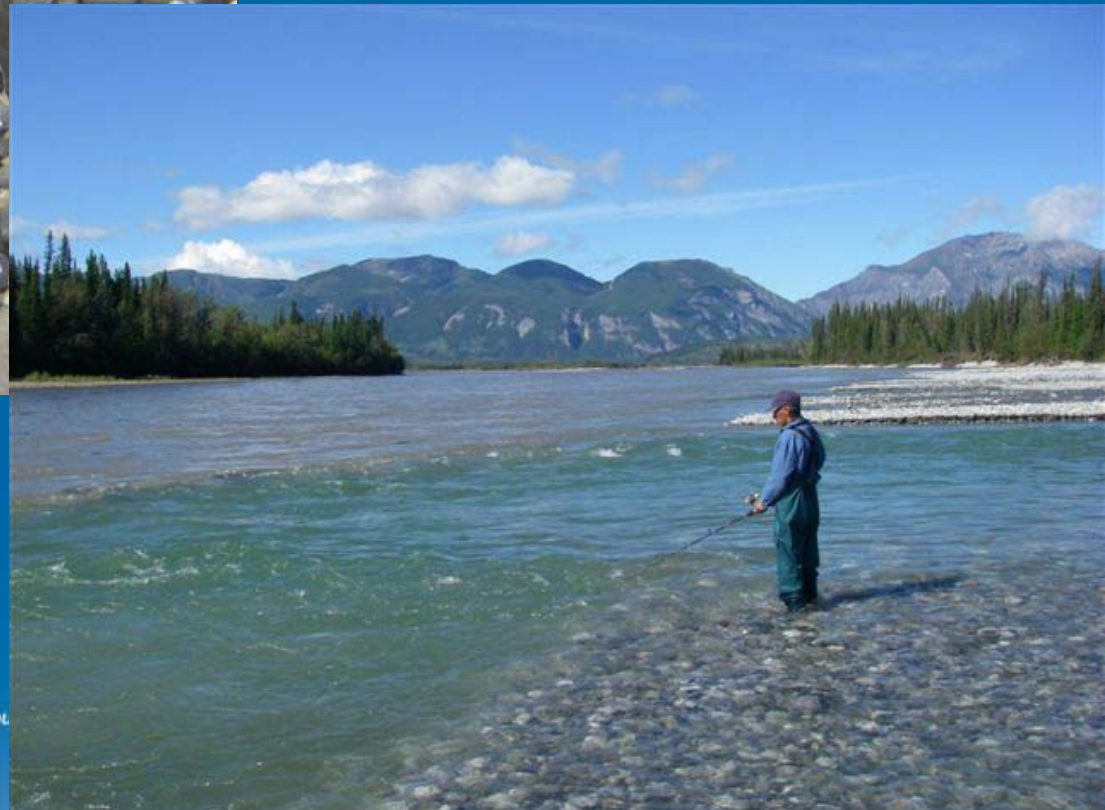
Mine operations

Ecological integrity of Prairie Creek Aquatic Ecosystem

- In the park, physical processes that influence aquatic ecosystems will operate within the natural range of variation.
- Aquatic invertebrate and algal communities inside the park are characteristic of the natural region.



Mine site: Water Quality



parkscanada.gc.ca

Bringing you

Mine Site Conclusions

The existing information does not provide confidence that the proposed approach will mitigate any potentially significant impacts to Prairie Creek's aquatic ecosystem.

Recommendation to include monitoring site within the park and a decision response system with thresholds



Questions?



parkscanada.gc.ca

Bringing you Canada's natural and historic treasures

