

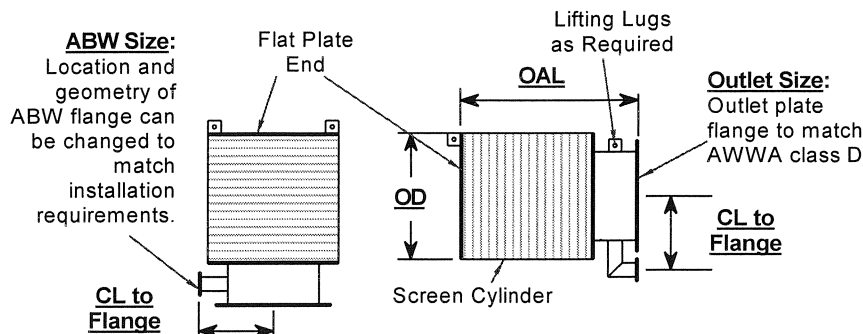
ATTACHMENT A

Screen Specification – Johnsons Screens Inc.

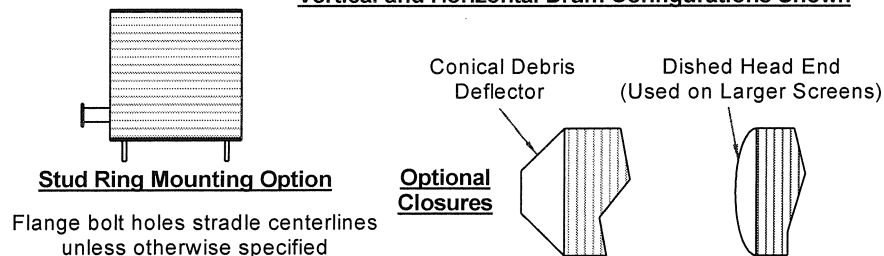
QUOTATION

Quote Number: 209660 SQ
Order Date: NOV 30 2011
Customer Reference: Fortune Minerals - Canada
Location: 13001 NEW BRIGHTON
Phone No.: 800.833-9473
Fax No.: 651.638-3177
Sales Person: WATSON, MARK E

TERMS		QUOTE VALIDITY		ENTERED BY	
Net 30 days		JAN 30 2012		COOK, LINDA S	
SHIPPING TERMS		SHIPPING INSTRUCTIONS			
EXW Ex Works		EXW-FACTORY COLLECT			
LINE NO.	ITEM NUMBER DESCRIPTION	UOM	QTY SHIPPED	UNIT PRICE	EXTENDED PRICE
1.000	<p>Attn: Bill Shepard Fortune Minerals Ph: 519-858-8188</p> <p>Johnson S-12HC Intake Screen...</p> <p>S-12 High Capacity Intake Screen Wire: #63 Slot: .100" Material: 304 stainless steel Air Backwash Connection: 1" Flow: 66 GPM/ Screen has under .125 ft/sec max thru slot velocity Depth: 10 Ft Outlet: Flange pattern to match AWWA C-207 class D 6" with outlet pipe End Closures: Endplate X Flange</p> <p>Johnson Intake Screens are covered by one or more of the following patents - #6,051,131; #6,712,959; and other patents pending.</p> <p>DELIVERY ON INTAKES: 2-3 Wks for drawing submittals 4-6 Wks after drawing approval, subject to manufacturing capacity</p>				
Johnson Screens (including any subsidiary, division or affiliate of Johnson Screens, inc.) will provide the requested equipment, materials or services to the customer. Such provision shall be governed by the current agreement signed by both the customer and an officer of Johnson Screens. In the event there is no such agreement, Johnson Screens' standard terms and conditions will apply (www.johnsonscreens.com/termsandconditions). A paper copy of these terms and conditions will be provided to the customer upon request. Notwithstanding anything to the contrary, the total liability of Johnson Screens shall not exceed the contract value of the particular Order.				TOTAL (USD)	



Vertical and Horizontal Drum Configurations Shown



Dimension/Sizes	Value	Unit	Comments
Model	S12HC		
OD	12.52	in	Nominal See note 1
OAL	21.00	in	Nominal See note 1
CL to Flange	5.00	in	Nominal See note 1
Outlet Connection Size	6PS		See note 2
ABW Connection Size	1PS		See note 2
Estimated Weight	110	lbs	
Left End Closure	Plate		
Right End Closure	N/A		

Screen Specifications			
Slot Opening	0.100	in	
Open Area Percentage	62.50%		
L/D Ratio	1.000		
Effective Screen Length	12.75	in	
Wire Type	63		

Design:			
Depth	10	Ft	Hydrostatic Load
Collapse Rating	4.34	psi	
Material	304		SS or Z-Alloy

Flow Capacities:			
Flow/Screen	66	GPM	See note 3
Maximum Slot Velocity	0.07	fps	See note 3
Average Slot Velocity	0.07	fps	See note 3
Estimated DP/Screen	0.0001	psi	Thru clean screen surface only-See note 4
Estimated DP/Assy	0.0026	psi	Through entire clean assembly - See note 4

PATENT #
#6,051,131

Notes:

- 1 Dimensions shown are nominal. All screens are made to order, and can be adapted to a wide variety of installation requirements.
- 2 These are based on the size of the connecting and abw pipe and may vary from the values listed in the technical brochure.
- 3 Capacities based on use of patented Johnson flow modifier design.
- 4 Pressure drops below .1 psi should be considered an order of magnitude only, as testing data for these low values is not available.

The concepts and assemblies shown should be considered proprietary and should not be copied, redistributed without the permission of US Filter/Johnson Screens. All dimensions are preliminary, changes may be made and can effect final price and configurati

Johnson screens™
A Weatherford Company

1950 Old Hwy. 8, New Brighton, MN 55112
(651)-638-3218 (Phone), (651)-638-3177 (Fax)

Model S12HC
Preliminary Intake Screen Specification
Fortune Minerals - Canada

Date:
11/29/2011