

# **Government of the Northwest Territories**

## **Gahcho Kue Project**

**Public Hearing Presentation  
Yellowknife, December 7, 2012**

Slide 1

1

# Presentation Outline

Socio-Economics

Air Quality and Incineration

Wildlife

Slide 2

# Socio-Economics



Slide 3

# GNWT Socio-Economic Programs and Services

GNWT socio-economic programs and services planned on NWT-wide basis

Programs and services adapt to emerging needs of communities and residents

GNWT monitors and reports on socio-economic indicators in all NWT communities

# Departmental Engagement

Active EIR participation

Potential concerns related to the Project:

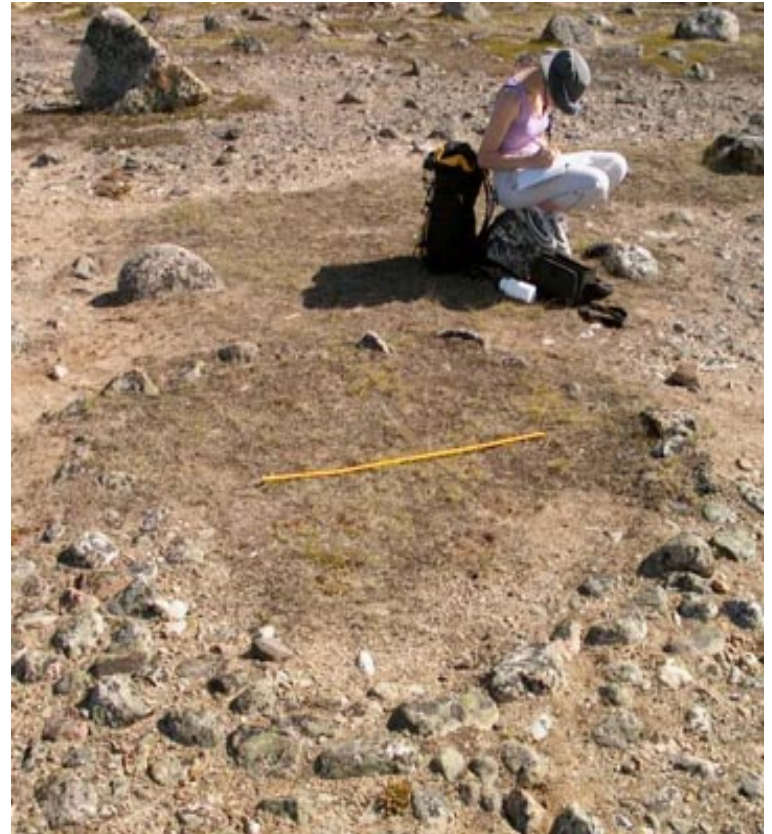
- Culture, heritage and archaeology
- Health and social services
- Employment and education
- Business development
- Socio-economic monitoring and follow-up



# Archaeological Site Protection

Gahcho Kue  
Archaeological  
Management Plan

No outstanding  
archaeological site  
protection issues



# Health and Social Services

## Commitments:

Made in EIS and technical review

During follow-up meetings

## Final commitments filed jointly

# Employment and Education

## Commitments:

Made in EIS and technical review

During one-on-one meetings



# NWT Labour Market

- Labour Market Information
- NWT Labour Market Development
- Partnerships

# Support to Northern Businesses

## Commitments:

Made in EIS and technical review

During one-on-one meetings

# Socio-Economic Recommendation

As a condition of Project approval, the GNWT recommends the Panel include the following requirement in its Report of Environmental Assessment:

**De Beers and GNWT shall negotiate and sign a follow-up program in the form of a Socio-Economic Agreement.**

# Conclusion

Socio-economic impacts will be addressed through:

De Beers' commitments

A Socio-Economic Agreement follow-up program between De Beers and GNWT

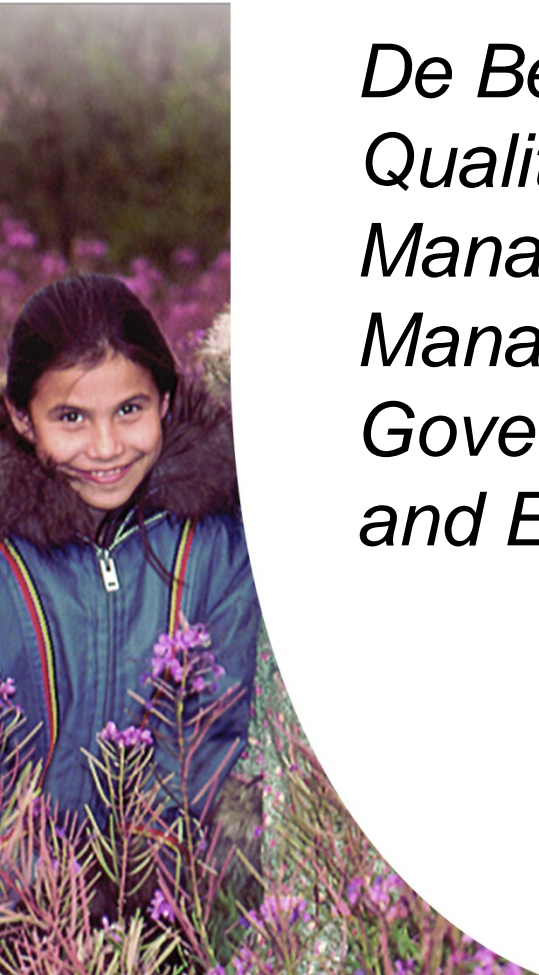
# Air Quality





# Air Quality and Incinerator Commitments

*De Beers commits to implement the Air Quality and Emissions Monitoring and Management Plan, and Incinerator Management Plan in consultation with the Government of the Northwest Territories and Environment Canada*



# Regulatory Implementation

Authority for environmental protection on federal lands rests with Land and Water Boards

Incineration is a waste management practice

Air quality not covered under a Land Use Permit and/or Water License

Results in Air Quality regulatory implementation gap



# Conclusion

Air Quality Commitments

Air Quality and Emissions Monitoring  
and Management Plan

Incineration Management Plan

Air Agreement

# Wildlife



# GNWT's Wildlife Role

Ensure impacts on wildlife and wildlife habitat are minimized or mitigated

Provide expert advice to Panel

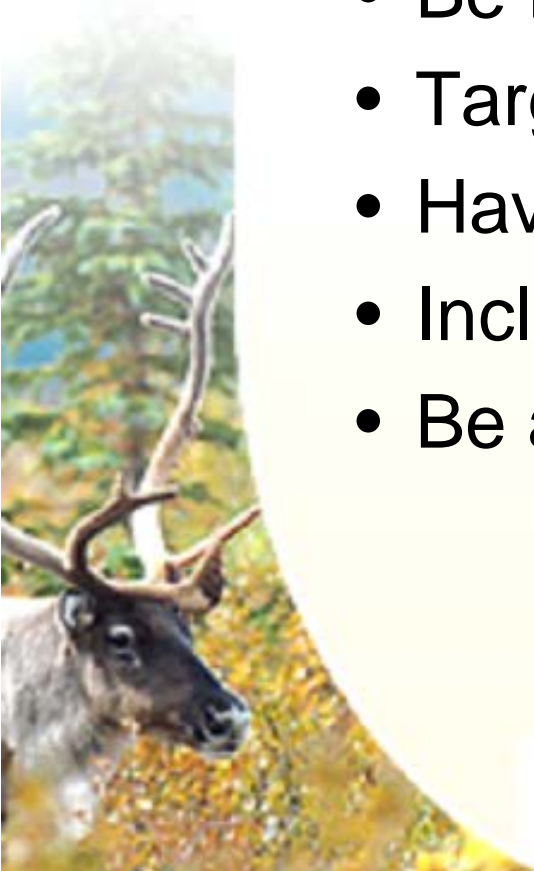




# Wildlife Effects Monitoring Program Adequacy

An adequate WEMP should:

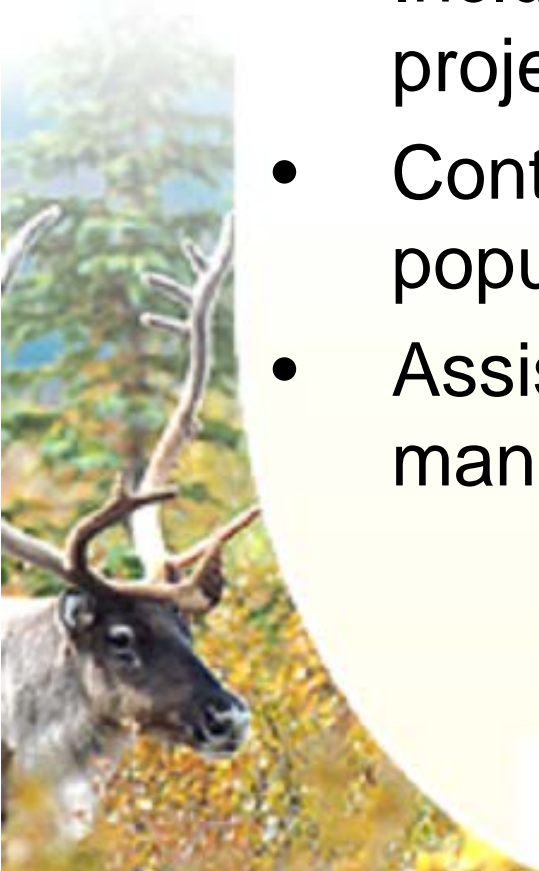
- Be robust enough to test predictions
- Target multiple species
- Have a collaborative approach
- Include standardized protocols
- Be adaptive



# Wildlife Effects Monitoring Program Adequacy

Regional based monitoring should:

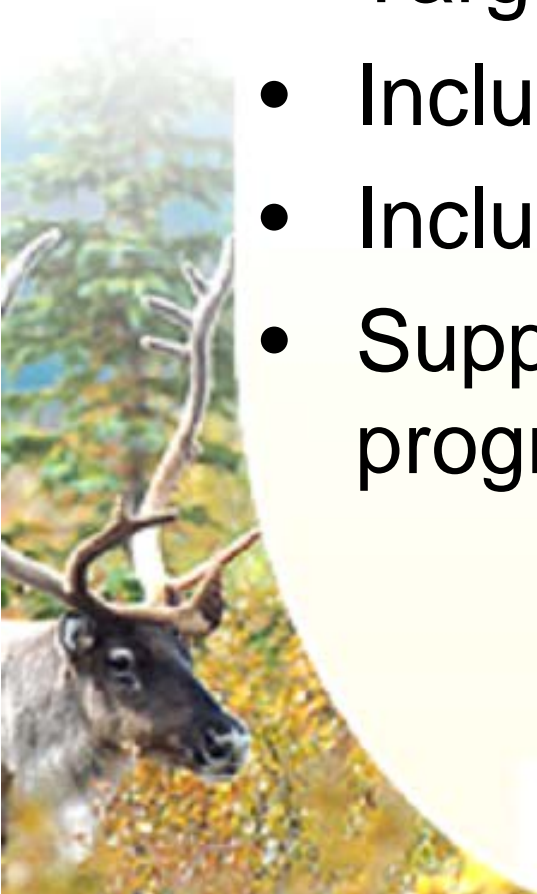
- Include monitoring beyond the specific project area
- Contribute to understanding of population level impacts
- Assist in the understanding and management of cumulative effects



# Adequacy Assessment

## Proposed WEMP:

- Targets multiple species
- Includes collaborative approach
- Includes adaptive management
- Supports regional monitoring programs



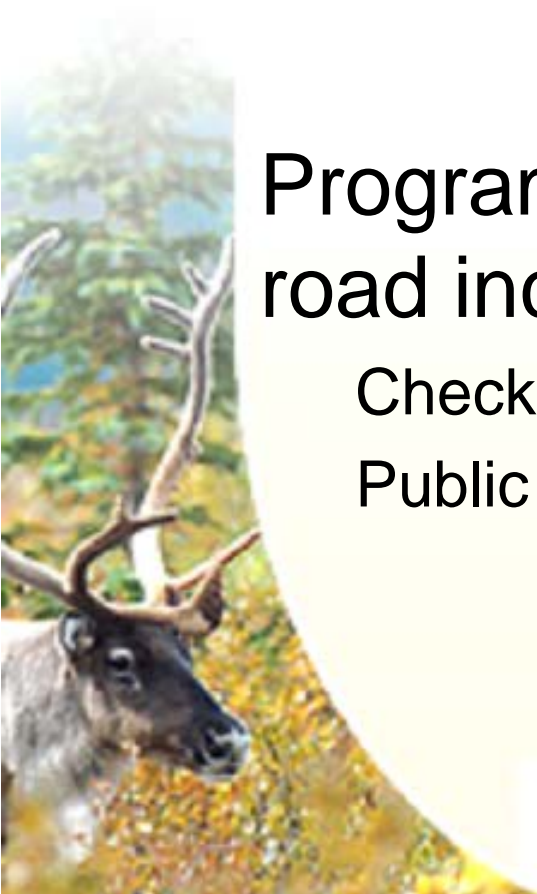
# Commitments

Joint regional programs for Grizzly bears, wolverines, and raptors

Programs related to winter access road including:

- Check stations along winter access road

- Public education programs



# Improvements Required

Carnivore regional programs need refinement

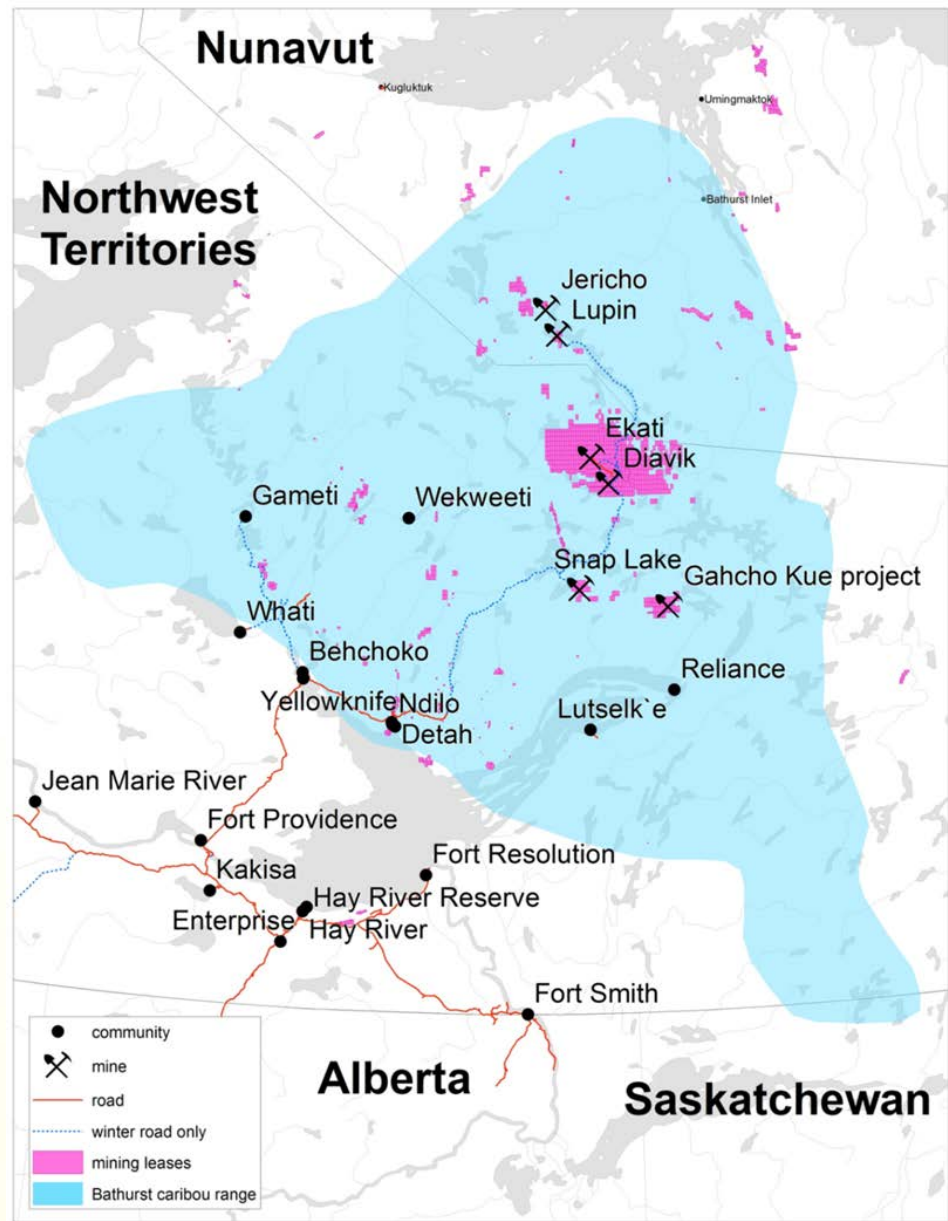
Development of barren-ground caribou monitoring program





# Cumulative Effects Implications

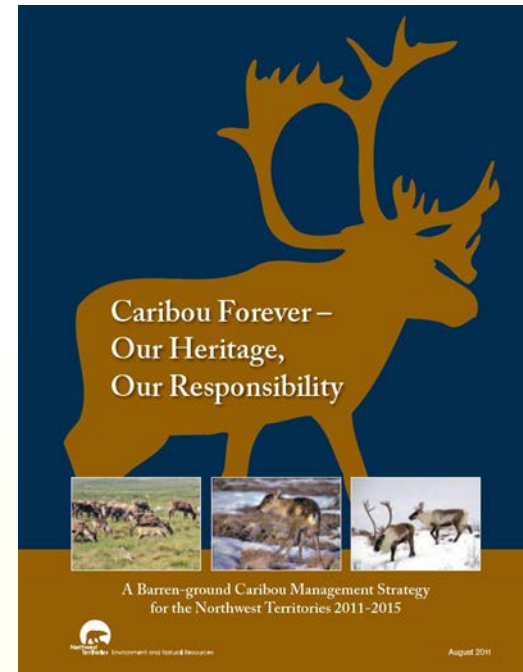
Developments and potential developments (pink) in the historical range Bathurst caribou herd



# Management of Barren-ground Caribou

Barren-ground Caribou Management Strategy includes:

- population monitoring
- active and potential management actions
- program activities

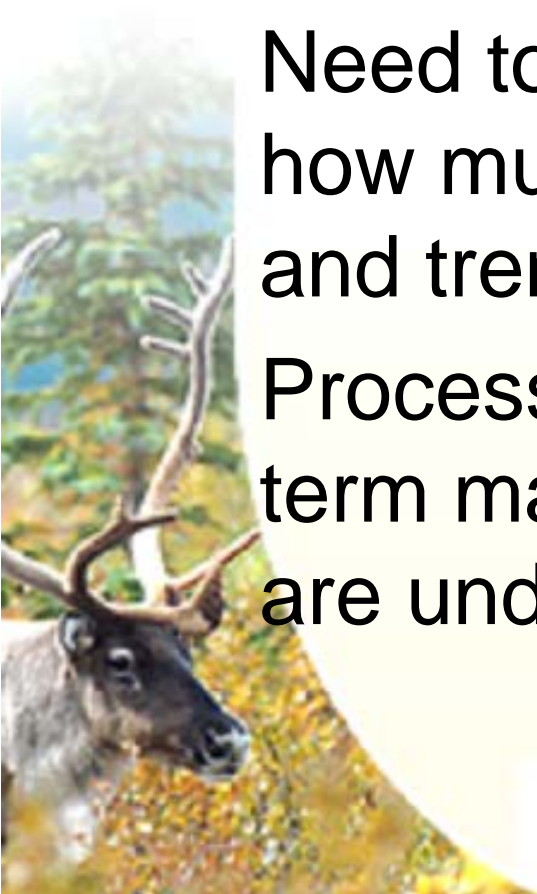


# Bathurst Herd Update

Bathurst herd is stable but still low in numbers

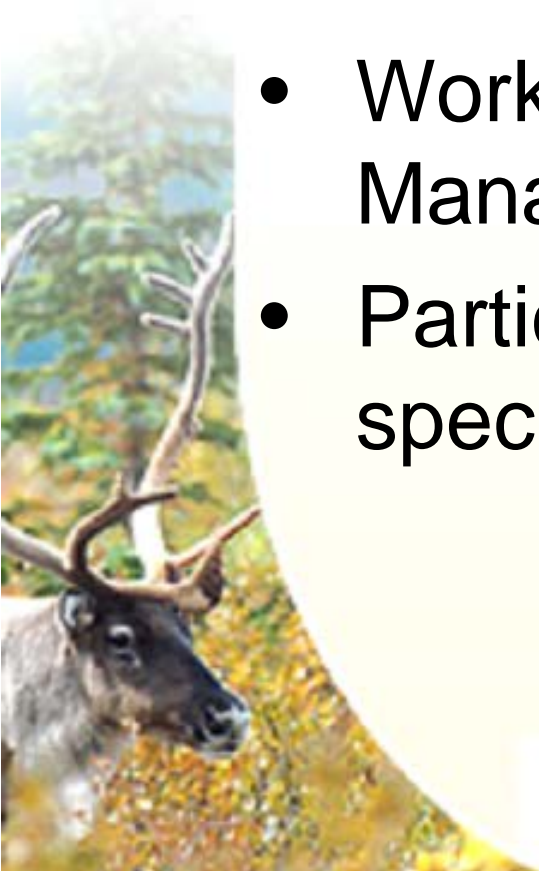
Need to work together to understand how multiple factors affect herd size and trend

Process to establish short and long term management actions for the herd are underway



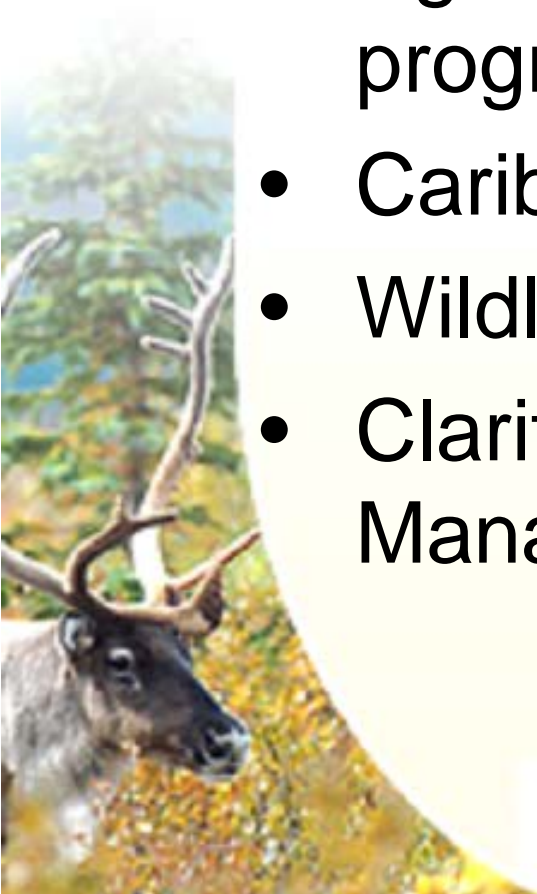
# Potential Support for Understanding and Managing Cumulative Effects

- Project disturbance
- Contribute to wolf predation study
- Work with partners on Road Access Management Plan
- Participate in GNWT workshops on species cumulative effects



# Conclusion

- Approach is conceptually sound
- Agreement to participate in regional programs is positive
- Caribou program needs refinement
- Wildlife agreement
- Clarification of Adaptive Management Committee Needed





# QUESTIONS?

