



# Lutsel K'e Dene First Nation

Sustainable Development based on Denesoline Beliefs and Traditions

Presentation to the MVEIRB Panel on the  
Proposed De Beers Gahcho Kue Diamond Mine

# Presentation Contents

- Connections
  - Proximity
  - Water Connections
  - Socio-Economic
- TK Report Summary
  - Recommendations
- Concerns
  - Environmental: Caribou
  - Environmental: Water
  - Environmental: Fish/ Fish Habitat
  - Public: Socio-Economic
  - Public: De Beers Past Performance
  - Public/Environmental: Proposed Protected Area
- Measures
- Conclusions

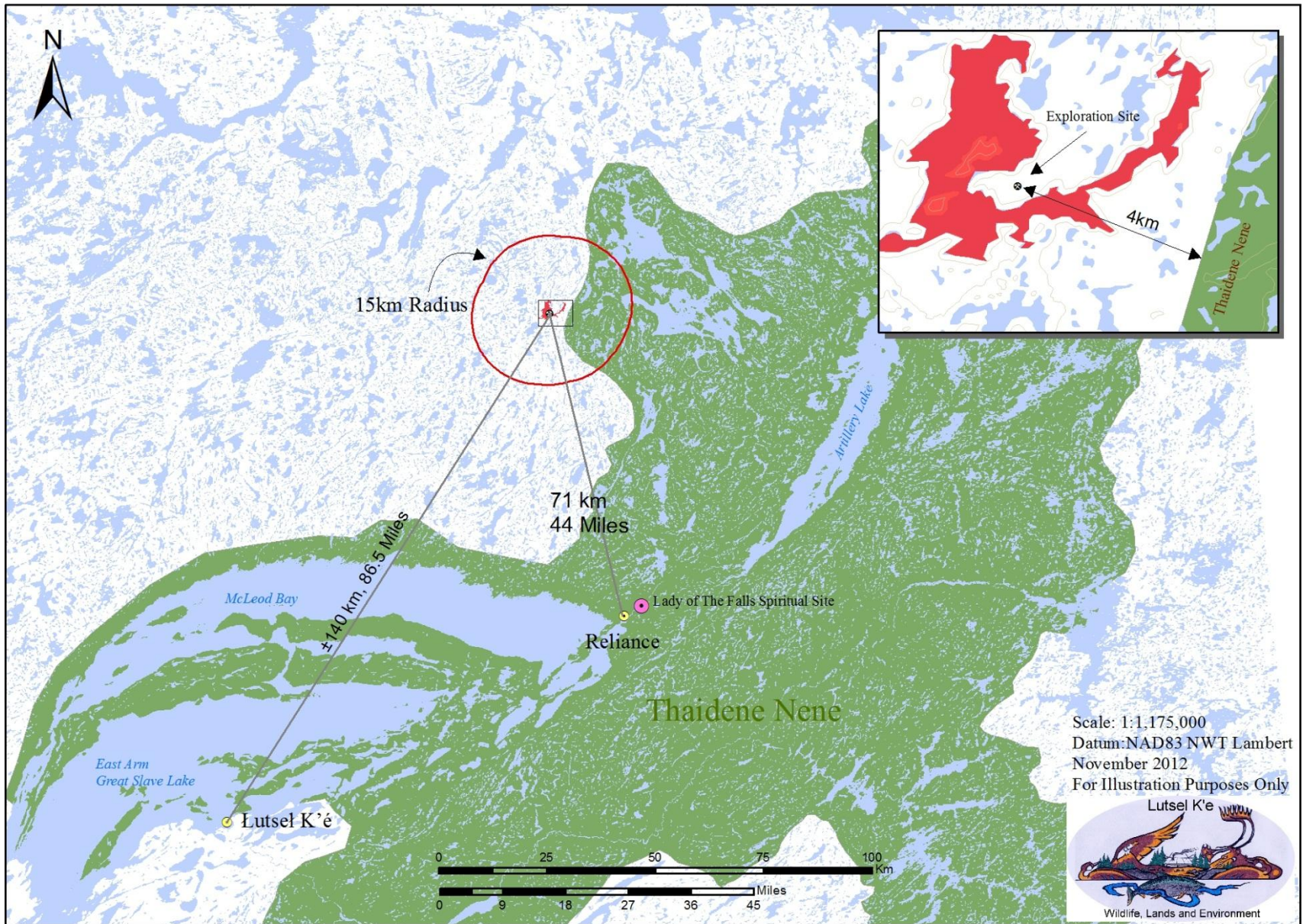


# Connections

Lutsel K'e's Proximity and Relation to  
the Gahcho Kue Development



# GahCho Kué Project Location



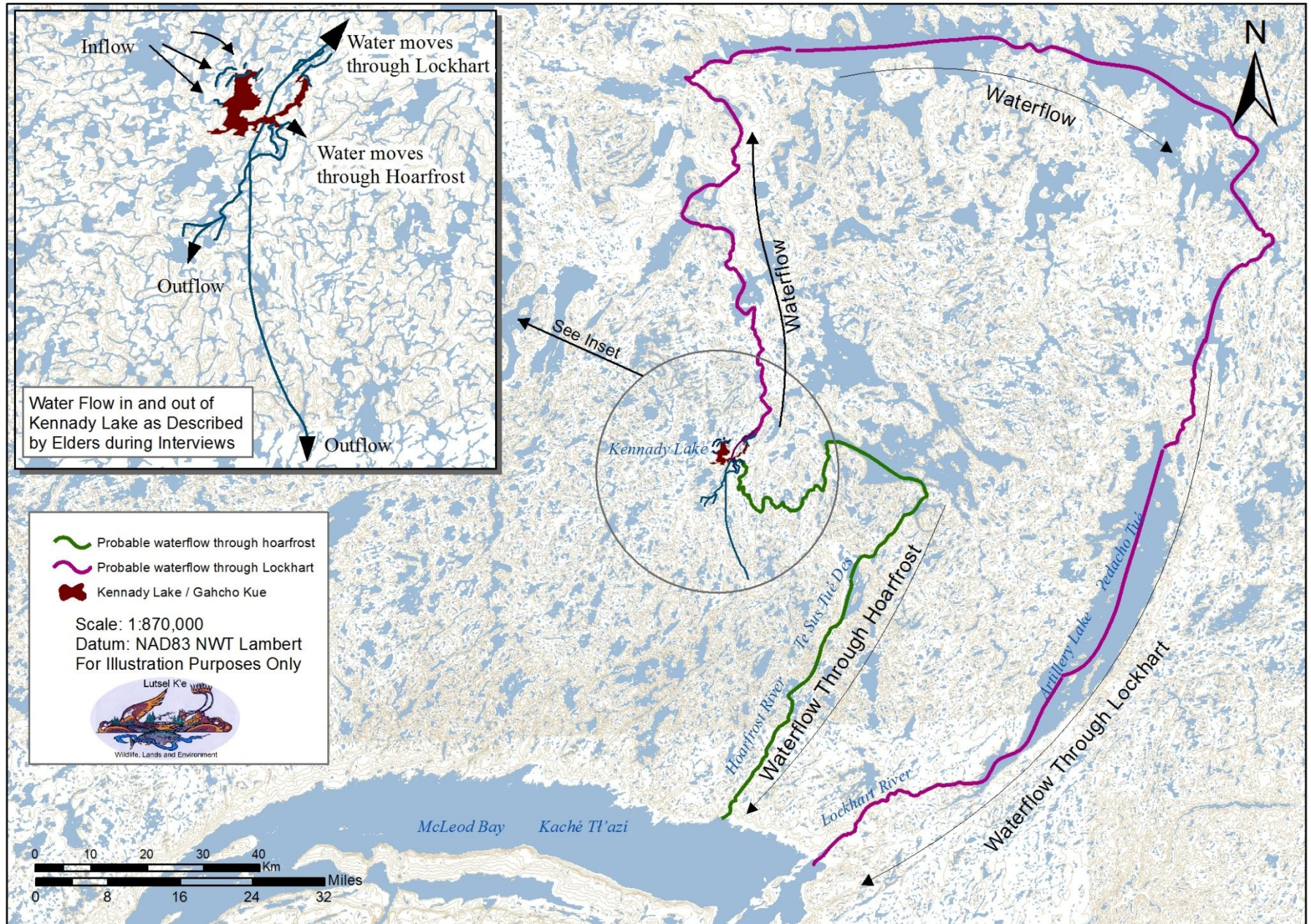


# Location Connection

- The Lutsel K'e Dene have lived and will continue to travel in the area of Gahcho Kue
- Wildlife will continue to pass through the Gahcho Kue area and will continue to be harvested/consumed by the Dene people
- The Lutsel K'e Dene must be assured that the connections to the land of our ancestors will remain strong, long after the mine has left; this must be understood by the panel and the company



# Traditional Knowledge in the Gahcho Kué Region Direction of Water Flow from Kennady Lake





# Water Connection

- The water from the mine site will end up in Great Slave Lake, Lutsel K'e Dene drink from the Lake, water quality and quantity are critically important
- The quality and quantity of the water affect the health of the fish, and the fish will continue to be harvested/consumed by the Lutsel K'e Dene
- All wildlife require water, and the Lutsel K'e Dene require there to be healthy wildlife

# Socio-Economic Connection

- Past mining operations have promised economic benefit for the community, in actuality, the impacts far outweigh the benefits
- De Beers commitments in 2007 with Snap Lake:
- Actual commitments realized:



A wide-angle photograph of a snowy, open landscape. A series of footprints leads from the bottom center towards the horizon. The sun is high in the sky, creating a bright lens flare effect. The sky is a clear, pale blue.

# Gahcho Kue Traditional Knowledge Report Summary

# Gahcho Kue TK Report

- Background
- Water
- Caribou
- Traditional Territory
- Concerns
- Recommendations





# Background

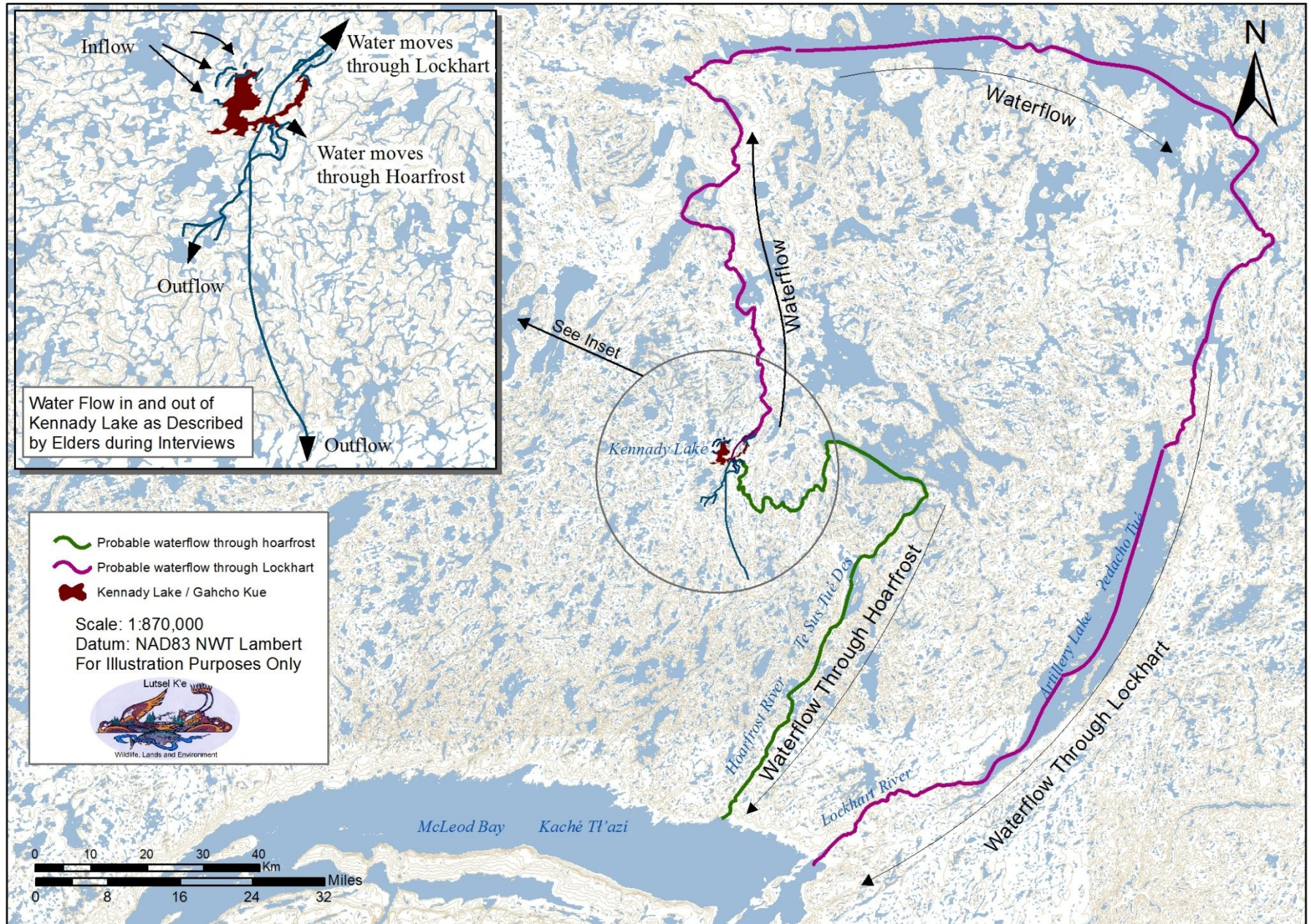
- Original Report 2006 – not released
- Working Group reconvened
- Report re-written to only include GK data
- Interviews from original report verified
- Workshops held to approve report with Elders, with WLEC, and with Council
- Report completed with concerns and recommendations for mitigation

# Context

- “The whole area is supposed to be respected, it’s our land, everything right here, it’s all important, belongs to the Dene Nation of Lutsel K’e (DM, 2006).”
- Living off the land makes the Dene people who they are, therefore the Dene must respect the land
- The Dene are speaking from the experience of lifetimes on the land, and the experience with three other mines on the traditional territory



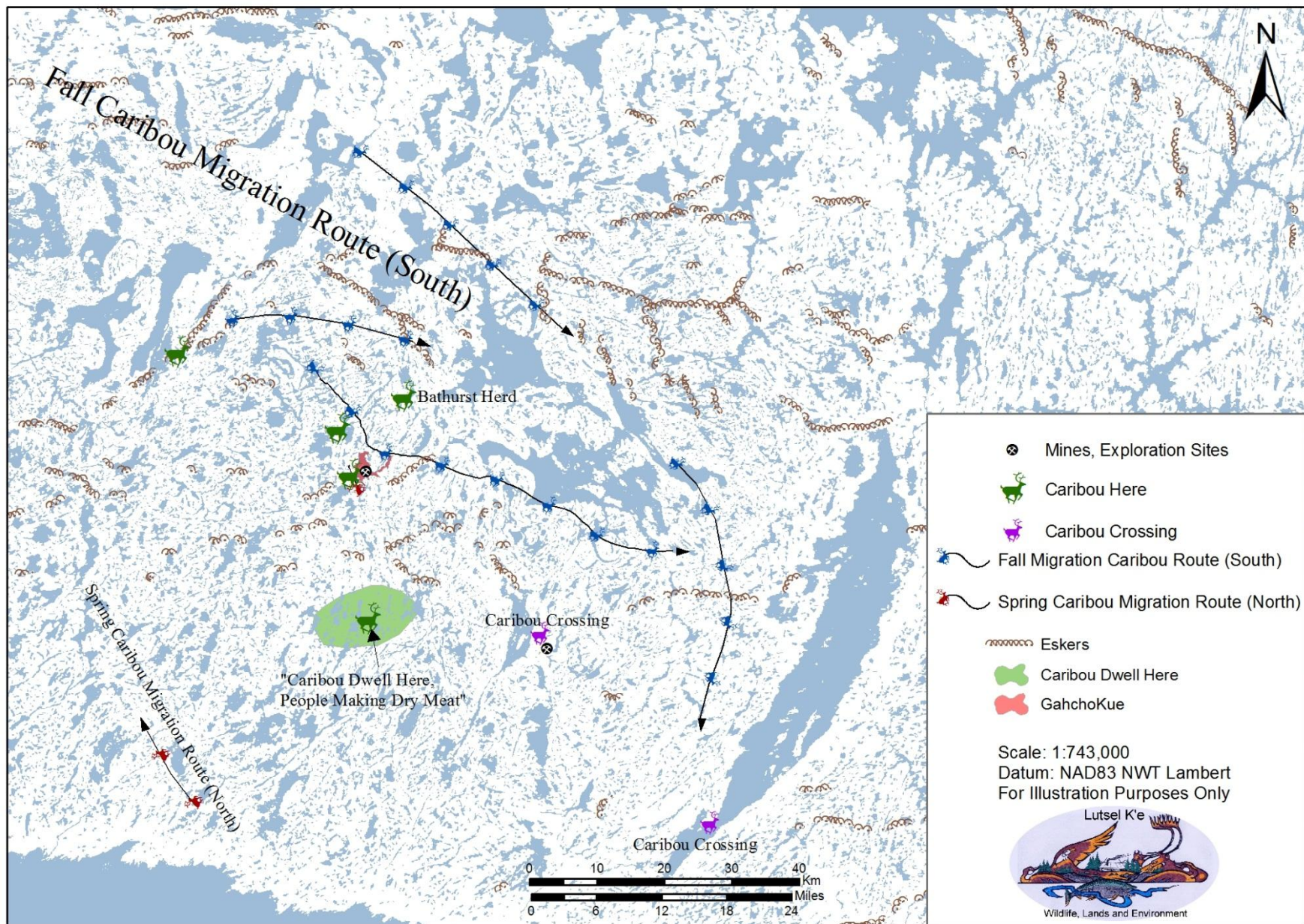
# Traditional Knowledge in the Gahcho Kué Region Direction of Water Flow from Kennady Lake





# Traditional Knowledge in the Gahcho Kué region Caribou

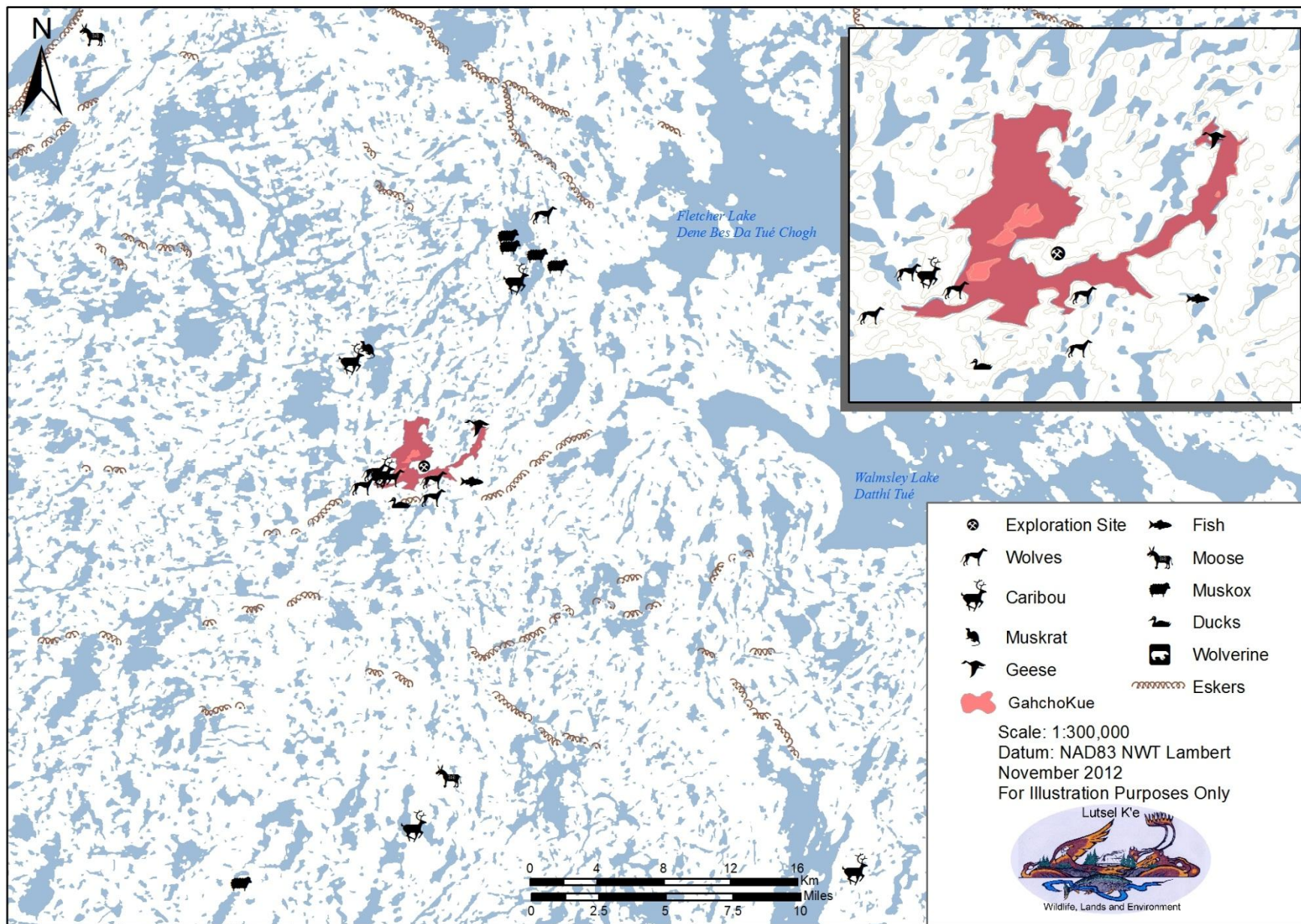
*Note: This map only reflects Lutsel K'e Denesuline Land Use in the Gahcho Kué Study Area. The Lutsel K'e Denesuline have occupied and used the entirety of their traditional territory since time immemorial.*





# Traditional Knowledge in the Gahcho Kue region Wildlife Sighting

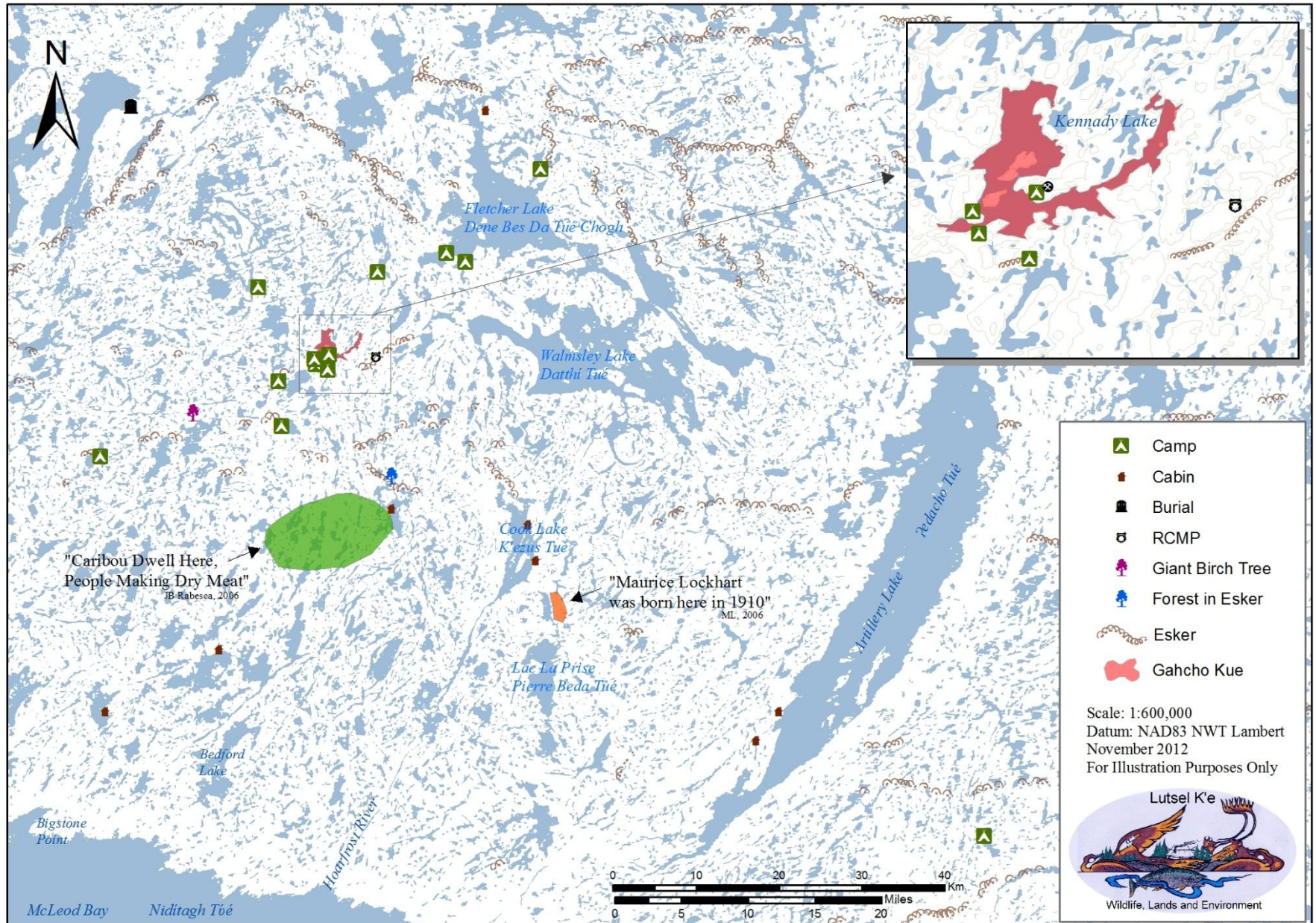
*Note: This map only reflects Lutsel K'e Denesuline Land Use in the Gahcho Kué Study Area. The Lutsel K'e Denesuline have occupied and used the entirety of their traditional territory since time immemorial.*





# Traditional Knowledge around Gahcho Kué Area Camps, Cabins, and other sites

Note: This map only reflects Lutsel K'e Denesuline Land Use in the Gahcho Kué Study Area. The Lutsel K'e Denesuline have occupied and used the entirety of their traditional territory since time immemorial.





# Concerns

- Damage to the immediate surrounding area
- Contamination of the Lockhart River Watershed
- Fish relocation and pit reclamation
- Caribou health: sick, injured, leg damage
- Caribou migration patterns
- Habituation of caribou and bears to people
- Proper monitoring by the right people
- Proper road construction to minimize impacts
- Runoff from waste rock piles
- Education/training, consultation, accommodation

# TK Report Recommendations

- Prevent runoff from waste rock piles from flowing into the Lockhart River Watershed
- Build an overflow channel for Dyke A and continually monitor this channel
- Do not return fish there once that pits have been dismantled, their habitat is destroyed
- Some healthy fish be placed in different lakes in the same area, but to prevent overpopulation, give some of the healthy/sick fish to Lutsel K'e (sick fish for dogs)



# TK Report Recommendations

- The proposed project be continually monitored by the Lutsel K'e Dene
- De Beers make every effort to prevent caribou from feeding in the mine area
- Create caribou monitoring teams from Lutsel K'e that would provide continuous 24-hour monitoring during each 2 week migration period
- Build a ditch to contain contaminated runoff from the waste rock piles, to prevent ingestion of contaminants by the caribou

# TK Report Recommendations

- The depth of the roadbed be kept as shallow as possible, and that the road be constructed with smaller rocks or sand, shale injures caribou
- Create designated parking places on the land, not on the lakes, where trucks stop and drivers rest, to prevent contamination of the watershed





# Concerns

Environmental Impacts:  
Caribou

# Winter Road

- Fragmentation of habitat
- Injuries to caribou trying to cross
- Forcing caribou further east around the eskers and out into the barren lands – implications to hunter/harvesting rights
- Splitting of herds through confusion and fear



# Health

- Insufficient research into impact of dust deposition to caribou health – lichen
- Potential impacts of waste rock pile runoff on caribou health
- Impacts of caribou use of waste rock piles in closure

# Cumulative Effects

- 2<sup>nd</sup> mine in the same watershed, 4<sup>th</sup> mine on Bathurst herd range → DBC has 2 of 4 mine
  - When is critical mass?
- Migration route changes from all development
  - Roads in particular
- Cumulative impacts of noise disturbance and vehicle presence in the barrens





# Concerns

Environmental Impacts:  
Water

# Closure Quality

- Kennady Lake reconnection to flow regime
  - Potential seepage from FPK facility
  - Kennady Lake as water management pond
- Downstream monitoring south of the mine site, where TK supports water flow
- Snap Lake spill record
- Any slight impact to the Lockhart River is a significant impact





# Concerns

Environmental Impact:  
Fish/Fish Habitat

# Fish Compensation

- Measures to require DFO to consult us
- Measure ensuring DBC has signed a deal prior to approval of project
- Downstream fish monitoring (Hoarfrost)







# Concerns

Public Concerns:  
Socio-economic

# Employment by NWT Community

NWT Community	Person Years	% of Total Employment	# of Active Employees	% of Total Employment
Fort Smith	6	2%	7	2%
Hay River	33	13%	4	14%
<b>Lutsel K'e</b>	<b>0</b>	<b>0%</b>	<b>1</b>	<b>0%</b>
Behchoko	18	7%	19	6%
Gameti	2	1%	2	1%
Wekweeti	2	1%	2	1%
Wha Ti	3	1%	5	2%
Yellowknife	170	68%	213	68%
Other NWT	15	6%	19	6%

Source: 2011 Snap Lake Socio-Economic Report



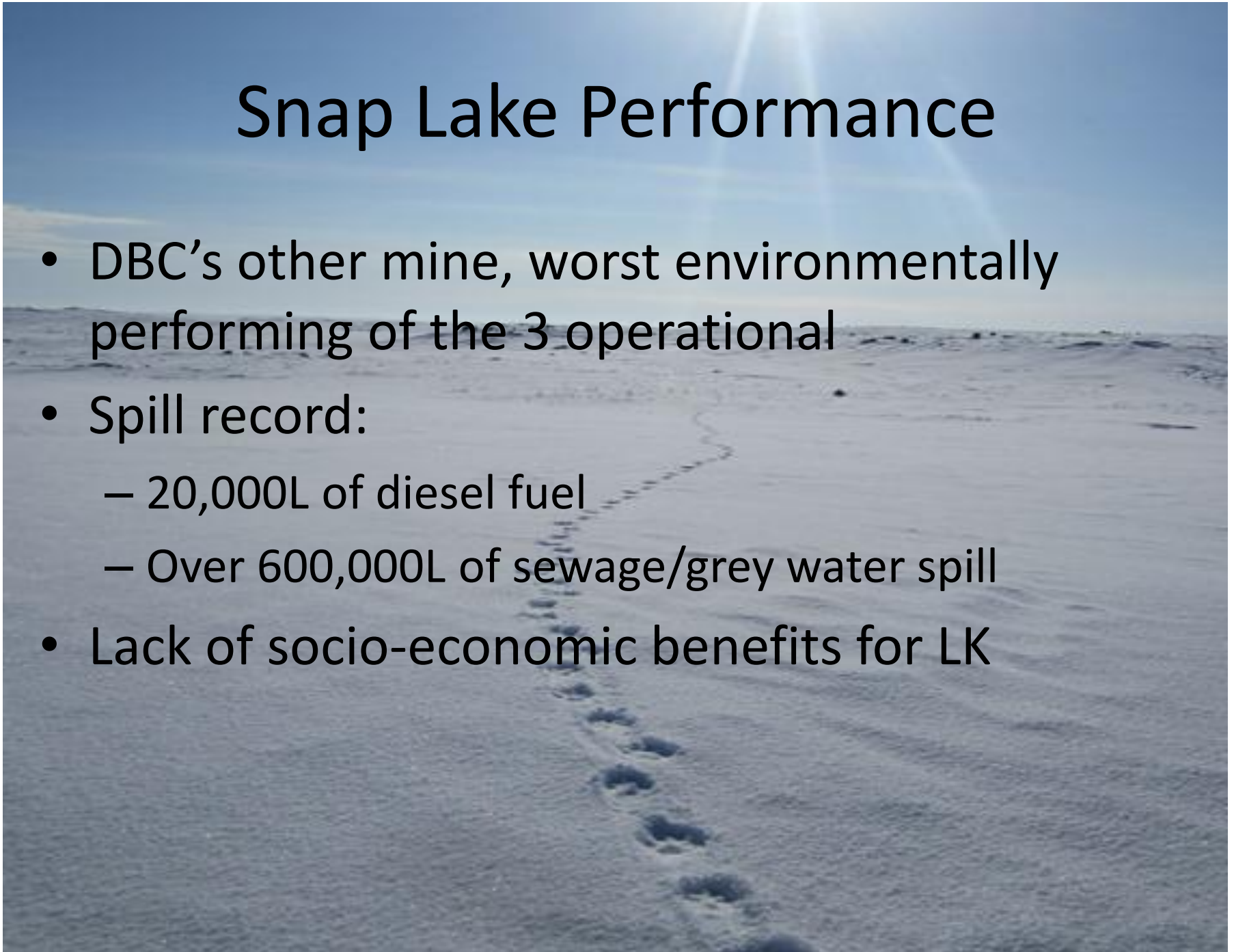


# Concern

Public Concern:  
Performance of Snap Lake

# Snap Lake Performance

- DBC's other mine, worst environmentally performing of the 3 operational
- Spill record:
  - 20,000L of diesel fuel
  - Over 600,000L of sewage/grey water spill
- Lack of socio-economic benefits for LK





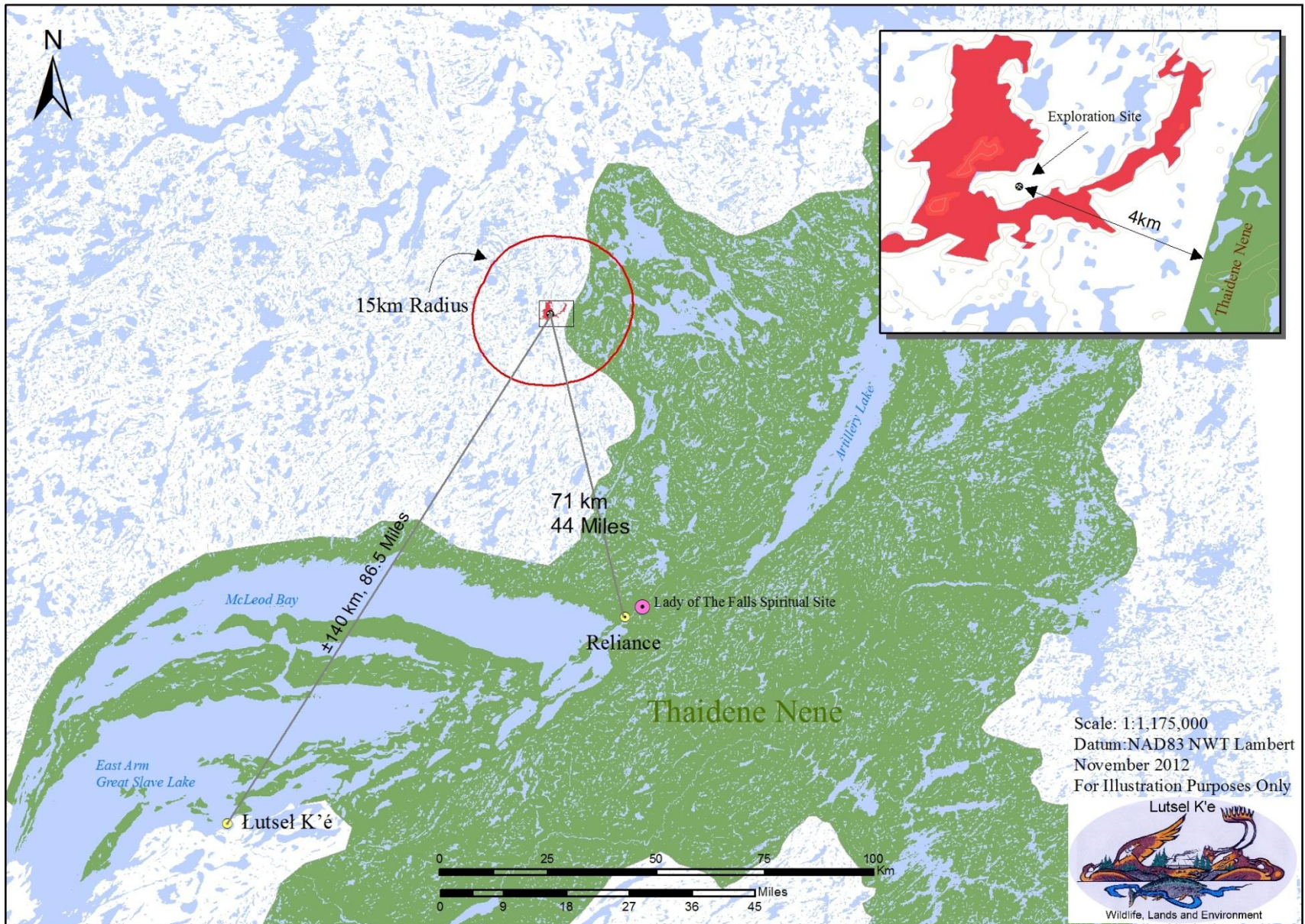


# Concern

Public/Environmental Concern:  
Proposed Thaidene Nene Protected  
Area



# GahCho Kué Project Location





# Thaidene Nene

- Mine located in potential protected area buffer zone
- Potential mine's ZOI includes detriment to the potential protected area
- Water from the mine will flow through the park, impacting the quality of water
- The park is protecting pristine area, decrease in tourism quality with operating mine there
- LKDFN requests a measure from the Review Board requiring DBC to communicate with LK on boundary considerations for TDN near the mine site

# Measures





# Conclusions

